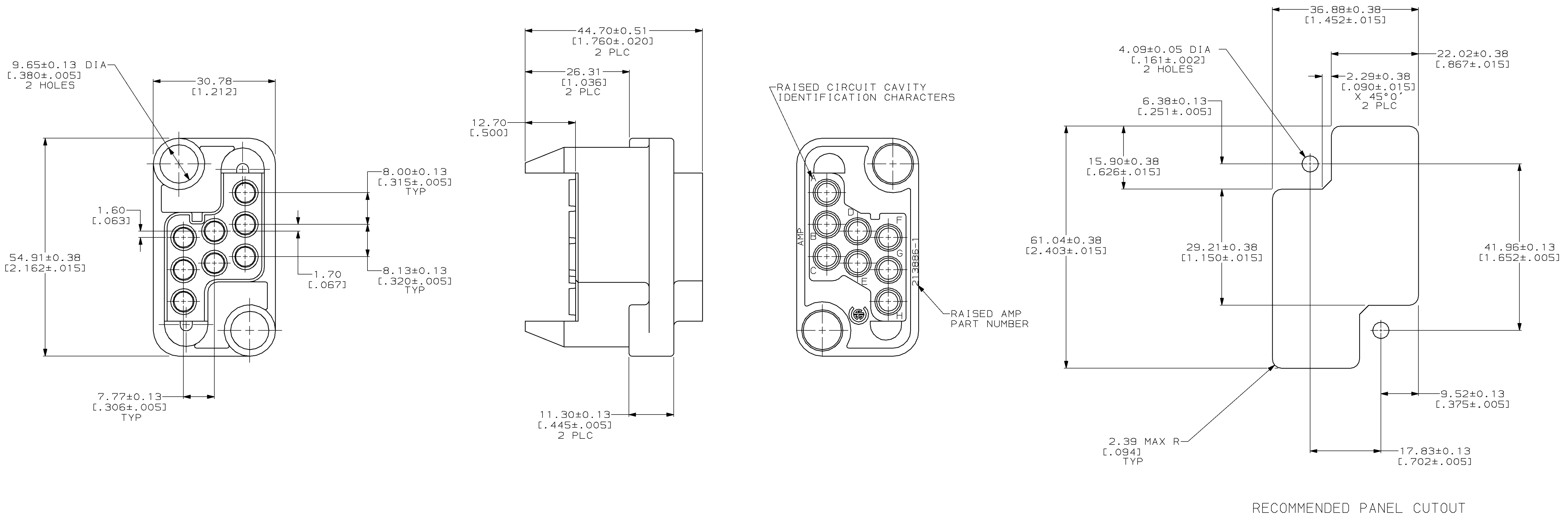


REV	DESCRIPTION	DATE	BY	APPV
0	RLSE -1 PER NPR 5364 WAS 95-5018-11-1	06/23/95	-	-
A	REV PER EC 0020-136-96	04 MAR 96	BC	MM
B	REV PER EC 0020-417-96	14 MAY 96	MB	MM



- THIS PLUG HOUSING MATES WITH RECEPTACLE HOUSING PART NUMBER 213500-3.
 - FOR MOUNTING SCREW INFORMATION SEE DRAWING 208211.
 - THIS HOUSING ACCEPTS (8) 3.18 [0.125] DIA POWERBAND SOCKET CONTACTS.
- ▲ POLYESTER, BLUE.

213886-1
PART NUMBER

<small>THIS DRAWING IS A CONTROLLED DOCUMENT FOR AMP INCORPORATED. IT IS SUBJECT TO CHANGE AND THE CONTROLLING ENGINEERING DEPARTMENT SHALL BE CONTACTED FOR THE LATEST REVISION.</small>		DWN M. BINNER 6-23-95 CHK R. STONE 6-28-95 APPV M. McALONIS 6-28-95	AMP Incorporated Harrisburg, PA 17105-3608
DIMENSIONS: mm (INCHES)	TOLERANCES UNLESS OTHERWISE SPECIFIED: 0 PLC ±- 1 PLC ±- 2 PLC ±0.25 [.010] 3 PLC ±- 4 PLC ±- ANGLES 10°/30°	NAME HOUSING, PLUG, DRAWER CONNECTOR, 8 POSITION, METRIMATE	SIZE A1
MATERIAL ▲	FINISH -	APPLICATION SPEC - WEIGHT -	CAGE CODE 00779 DRAWING NO 213886 SCALE 2:1
CUSTOMER DRAWING		SHEET 1 OF 1	REV B

X-ON Electronics

Largest Supplier of Electrical and Electronic Components

Click to view similar products for [Heavy Duty Power Connectors](#) category:

Click to view products by [TE Connectivity](#) manufacturer:

Other Similar products are found below :

[1424439](#) [1424438](#) [09330062652](#) [605601-1](#) [6340G1](#) [6341G1](#) [6360G1](#) [6373G1](#) [6374g2](#) [6396G1](#) [647757-1](#) [6643411-1](#) [6646058-2](#) [6646137-1](#)
[6646138-1](#) [6646348-1](#) [6646479-1](#) [6646608-1](#) [6646786-1](#) [6646940-1](#) [6651525-1](#) [6651529-1](#) [6651778-1](#) [6651788-1](#) [696465-1](#) [696475-1](#)
[73000005059](#) [73000005349](#) [73000005642](#) [73080965046](#) [765-15-0080A](#) [765-16-0080B](#) [789.700-44](#) [789.700-54](#) [80-1010](#) [80-9](#) [827381-1](#)
[829992-1](#) [902-77-02113](#) [PL00U-301-10D10](#) [PM103MOOLOO](#) [PM212MOOLOO](#) [PM309FOOLOO](#) [PM324FOOLCH](#) [PMHPAF11S03](#)
[PMHPAF14S01](#) [PMHPAM14P05](#) [PMHPAS06](#) [PMHPBF14S01](#) [PP45PC12S](#)