

P	LTR	DESCRIPTION	DATE	DWN	APVD
	B	REVISED PER ECO-08-029128	22NOV08	HMR	MS
	B1	REVISED PER ECO-09-020689	27AUG09	KK	AEG
	C	REVISED PER ECO-18-000968	22JAN2018	RS	MZ

#5-20 SELF TAPPING SCREW
QTY=2

$15.75^{+0.00}_{-1.27}$
 $[\ .620^{+.000}_{-.050}]$

△2 CABLE CLAMP INSERT

CABLE CLAMP BODY

△1 CABLE CLAMP BODY AND INSERTS: NYLON, BLACK.
SCREWS: CARBON STEEL.

△2 CABLE CLAMPING AREA ADJUSTABLE FROM
2.54 [.100] TO 10.41 [.410] SQ AREA BY
REVERSING OR CHANGING CLAMPING INSERTS.

△3 17.86 [.703] MAXIMUM CABLE OUTSIDE DIAMETER.

△4 SCREWS: ZINC W/ TRIVALENT CHROMATE.

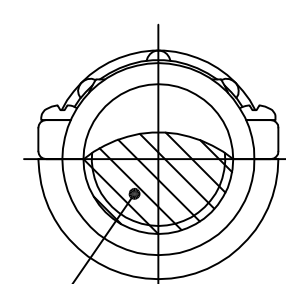
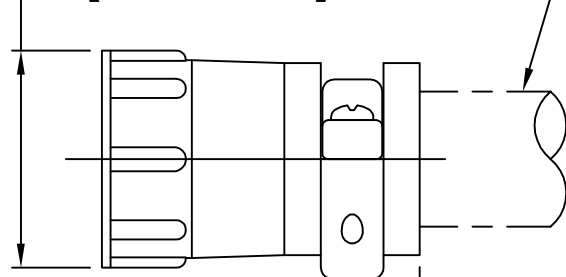
△5 OBSOLETE PARTS: OBSOLETE CIS STREAMLINING
PER D.RENAUD/D.SINISI

△5 OBSOLETE	△4	BULK	213902-4
	△4	INDIVIDUAL	213902-3
	△4	BULK	213902-2
OBSOLETE	△4	INDIVIDUAL	213902-1

SCREW FINISH	PACKAGING	PART NUMBER

28.73 ± 0.64
 $[1.131 \pm .025]$

CABLE SUPPLIED
BY CUSTOMER △3



CLAMPING AREA
△2

42.04 ± 0.76
 $[1.655 \pm .030]$

ASSEMBLED VIEW

THIS DRAWING IS A CONTROLLED DOCUMENT.

DWN D.HARDY 07/12/95

CHK R.STONE 07/13/95

APVD A.FRANTUM 07/13/95

PRODUCT SPEC

108-1579

APPLICATION SPEC

WEIGHT

CUSTOMER DRAWING

STE TE Connectivity Ltd.

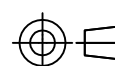
NAME
CABLE CLAMP KIT, LARGE,
UNASSEMBLED, SIZE 17, CPC

SIZE	CAGE CODE	DRAWING NO	RESTRICTED TO
A3	00779	C=213902	-

SCALE	SHEET	REV
NTS	1 OF 1	C

DIMENSIONS:
mm [INCHES]

TOLERANCES UNLESS
OTHERWISE SPECIFIED:



0 PLC ± -
1 PLC ± -
2 PLC ± -
3 PLC ± -
4 PLC ± -
ANGLES ± -

MATERIAL



FINISH -

X-ON Electronics

Largest Supplier of Electrical and Electronic Components

Click to view similar products for [Standard Circular Connector](#) category:

Click to view products by [TE Connectivity](#) manufacturer:

Other Similar products are found below :

[5M2530B10P](#) [600259N006](#) [600273N007](#) [6134-336-13149](#) [6134-337-11149](#) [6134-337-2390](#) [6134-341-17149](#) [6280-4SG-516](#) [6280-7SG-3DC](#)
[6290](#) [6291A](#) [66200A-10](#) [680-SMG](#) [681-PMG](#) [CXS3102A14S2P](#) [CXS3102A181S](#) [7271-6SG-300](#) [7282-3PG-300-CH3](#) [75-474618-01S](#) [75-](#)
[474618-04P](#) [75-474618-04S](#) [799539-000](#) [MI8-SE](#) [805-005-07NF11-19PC](#) [805-005-07NF15-7PA](#) [8280-4PG-516](#) [8280-7PG-519](#) [8282-5PG-](#)
[519](#) [836783-1](#) [MP-4102-25P-C](#) [862256-1](#) [864019-2](#) [866857-1](#) [867865-1](#) [PT01SP-14-18P](#) [PT08P-14-5S](#) [120-1833-000](#)
[QCM019PC2DC012B](#) [1-2069279-1](#) [121583-0217](#) [121667-0020](#) [129591AU](#) [1000B BULK](#) [RD10A16-19-P6CS051/1](#) [RD10A20-31-](#)
[P8CS051/1](#) [RD16A14-12-S6CS051/2](#) [1301240290](#) [1301240347](#) [1301860202](#) [1301240268](#) [1301240275](#)