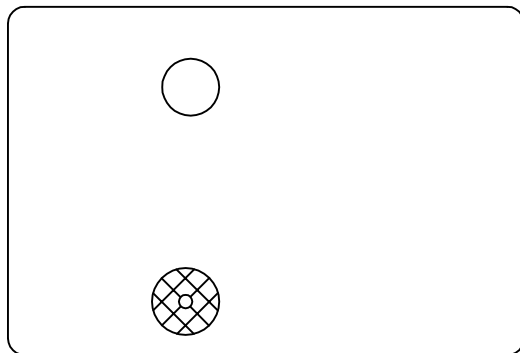


| P | LTR | DESCRIPTION | DATE | DWN | APVD |
|----|-----|---|---------------|-----------|--------------|
| B1 | | 1.CHANGE TE LOGO 2.ADD LINE IDENTIFICATION 3.PN OBSOLETE 4.TERMINALS TOLERANCE CLARIFICATION | ECO-11-018616 | 03-MAY-12 | P.L B.H.Y |

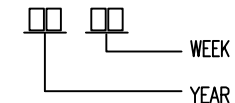


GENERAL TOLERANCE

| Diagram dimension | Tolerance |
|-------------------|-----------|
| 0.99mm max. | ±0.1mm |
| 1 - 2.99mm | ±0.2mm |
| 3mm min. | ±0.3mm |

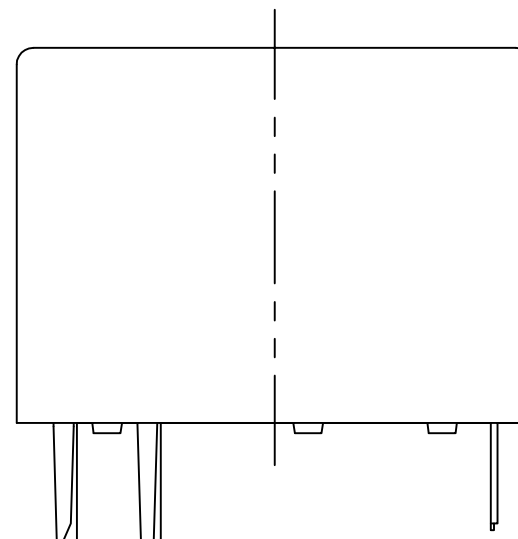
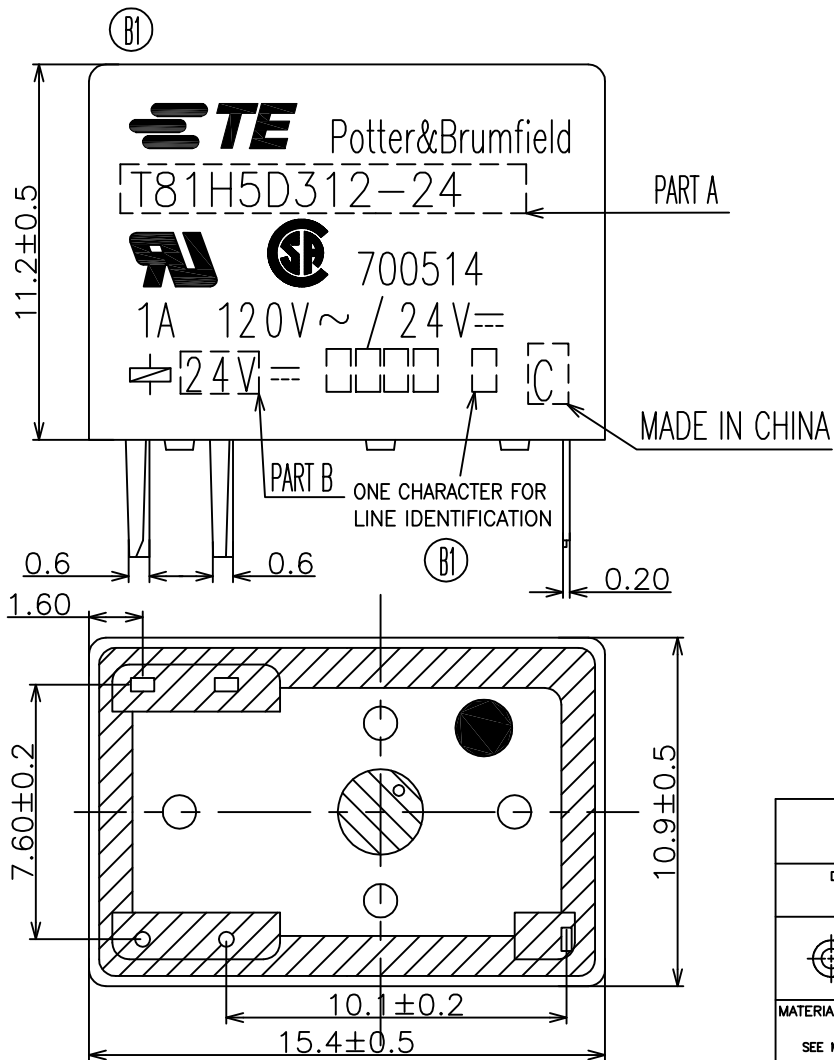
NOTE:

1.LOT NO. SYSTEM AS FOLLOWING:



ⓑ1 2.TERMINAL DIMENSIONS BEFORE SOLDER DIP

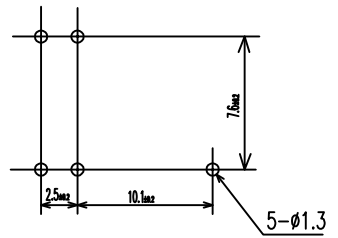
ⓑ1 3.FOR THE TIN-PLATING OF THE PINS:
+0.1mm FOR WIDTH, THICKNESS AND DIAMETER
+0.5mm FOR LENGTH



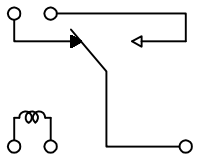
| | | | |
|--------------------|--|---------------------------|---------------------|
| DWN ZHUAN,ZHOU | | TE TE Connectivity | |
| CHK BANGHUA,YU | | | |
| APVD SUUNY ZHANG | | T81 H/N CUSTOMER DRAWING | |
| PRODUCT SPEC | | APPLICATION SPEC | |
| MATERIAL | | SIZE A3 | RESTRICTED TO |
| FINISH | | GAGE CODE | DRAWING NO. 1393779 |
| SEE MATERIAL TABLE | | SCALE 4:1 | SHEET 1 OF 2 |
| RESTRICTED DRAWING | | REV B1 | |

| LOC HB | DIST | REVISIONS | | | | | | |
|-----------|------|-----------|-----|-------------|-----|------|-----|------|
| | | P | LTR | DESCRIPTION | ECN | DATE | DWN | APVD |
| | | | | | | | | |

PC Board Layout(Bottom View)




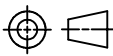
WIRING DIAGRAM (BOTTOM VIEW)



| | | | | | |
|----------|-------------|--------------|--------|--------------|------|
| ACTIVE | 6-1393779-9 | T81N5D312-05 | 5V | T81N5D312-05 | i |
| ACTIVE | 7-1393779-2 | T81N5D312-24 | 24V | T81N5D312-24 | h |
| ACTIVE | 7-1393779-1 | T81N5D312-12 | 12V | T81N5D312-12 | g |
| OBSOLETE | 7-1393779-0 | T81N5D312-09 | 9V | T81N5D312-09 | f |
| ACTIVE | 5-1393779-9 | T81H5D312-24 | 24V | T81H5D312-24 | e |
| ACTIVE | 5-1393779-8 | T81H5D312-12 | 12V | T81H5D312-12 | d |
| OBSOLETE | 5-1393779-7 | T81H5D312-09 | 9V | T81H5D312-09 | c |
| OBSOLETE | 5-1393779-6 | T81H5D312-06 | 6V | T81H5D312-06 | b |
| ACTIVE | 5-1393779-5 | T81H5D312-05 | 5V | T81H5D312-05 | a |
| STATUS | PART NO | DESCRIPTION | PART B | PART A | ITEM |

| | | | | |
|------------------|--------------|-----------|-------------------------|------|
| | | UV | SEAL (FOR SEALED TYPE) | 15 |
| | | SEAL GLUE | SEAL (CASE & BASE) | 14 |
| | | 3UEW | MAGNETIC WIRE | 13 |
| | | HCP WIRE | COIL TERMINAL | 12 |
| | | Ag ALLOY | B CONTACT | 11 |
| | | Ag ALLOY | M CONTACT | 10 |
| | | Ag ALLOY | MOVABLE CONTACT | 9 |
| | | Cu ALLOY | B TERMINAL | 8 |
| | | Cu ALLOY | M TERMINAL | 7 |
| | | Cu ALLOY | MOVABLE SPRING | 6 |
| UL94V-0 | | PBT | BOBBIN | 5 |
| UL94V-0 | | PBT | CASE | 4 |
| | | CSC C | CORE | 3 |
| | CuNi PLATING | SPCC | ARMATURE | 2 |
| | CuNi PLATING | SPCC | YOKE | 1 |
| INCOMBUSTIBILITY | TREATMENT | MATERIAL | DESCRIPTION | ITEM |

(B1)

| | | | | | | | | |
|--|---|------------------|-------------|---|---------------------------|------------|---------------|----|
| DIMENSIONS: mm | TOLERANCES UNLESS OTHERWISE SPECIFIED: 0 PLC ± 1 PLC ± 2 PLC ± 3 PLC ± 4 PLC ± | DWN | ZHUAN,ZHOU |  TE Connectivity | | | | |
| | | CHK | BANGHUA,YU | | | | | |
|  | MATERIAL SEE MATERIAL TABLE | APVD | SUUNY ZHANG | | T81 H/N CUSTOMERT DRAWING | | | |
| | | PRODUCT SPEC | | | | | | |
| | | APPLICATION SPEC | | SIZE | GAGE CODE | DRAWING NO | RESTRICTED TO | |
| | | FINISH | | A3 | | 1393779 | | |
| RESTRICTED DRAWING | | | SCALE | 4:1 | SHEET | 2 OF 2 | REV | B1 |

X-ON Electronics

Largest Supplier of Electrical and Electronic Components

Click to view similar products for [Low Signal Relays - PCB category](#):

Click to view products by [TE Connectivity manufacturer](#):

Other Similar products are found below :

[6-1393813-4](#) [6-1462039-0](#) [6-1617529-6](#) [617-12](#) [M39016/11-048P](#) [67RPCX-3](#) [7-1393809-0](#) [7-1393813-3](#) [7556072001](#) [80.010.4522.1](#) [FTR-B4GA006Z](#) [FW1210S02](#) [9-1393813-6](#) [9-1617519-3](#) [9-1617582-5](#) [G6AK-2-H-DC5](#) [A-1.5W-K](#) [DF2E-L2-DC3V](#) [DS1EM24J](#) [DS1ES5J](#) [DS4E-M-DC5V-H48](#) [EC2-4.5TNJ](#) [EC2-9NJ](#) [B07B939BC1-0868](#) [1608043-4](#) [1617076-5](#) [1617117-3](#) [1617137-2](#) [1617518-5](#) [1617560](#) [HMB1130K00](#) [HMB1131S06](#) [HMS1119S01](#) [HMS1131S10](#) [HMS1201S03](#) [HMS1201S87](#) [HMS1205S02](#) [2-1393807-6](#) [2-1617071-2](#) [2-1617594-1](#) [JMGSC-5LW](#) [K6-PS](#) [KHS-17D11-110](#) [9-1393761-0](#) [9-1617352-3](#) [9-1617583-1](#) [276XAXH-9D](#) [1617072-3](#) [1617075-4](#) [1617109-](#)