

**Power Relay RM 8**

- 2 pole 25 A, 2 form C (2 CO) contacts
- DC or AC coil
- Mechanical indicator
- Push-to-test button
- Chassis or DIN rail mount

Typical applications  
Cleaning equipment, heating and cooling equipment.



**Approvals**

VDE Cert. No. 40003144, UL E214025,  
Technical data of approved types on request.

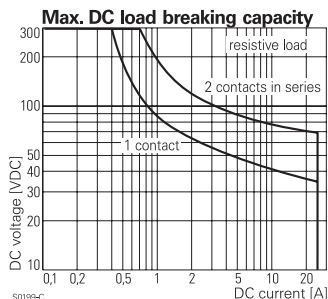
**Contact Data**

Contact arrangement	2 form C (CO)
Rated voltage	250VAC (VDE) /415VAC (UL)
Max. switching voltage	415VAC
Rated current	25A
Limiting making current, 20ms max.	60A
Switching power	6000VA
Contact material	AgNi90/10
Min. recommended contact load	24VDC/100mA
Frequency of operation, with/without load, DC coil	360/6000h <sup>-1</sup>
Operate/release time max., DC coil	15/10ms
Bounce time max., form A/form B, DC coil	4/6ms

**Contact ratings**

Type	Contact	Load	Cycles
<b>IEC 61810</b>			
RM82/7 C (CO)		25 A, 250 VAC, cosφ=1 DC-coil, 65°C	10x10 <sup>3</sup>
RM82/7 C (CO)		25 A, 250 VAC, cosφ=1 AC-coil, 40°C	10x10 <sup>3</sup>
<b>UL 508</b>			
RM82/7 A/B (NO/NC)		25 A, 277 VAC, general purpose, 50°C	6x10 <sup>3</sup>
RM8 A/B (NO/NC)		25 A, 415 VAC, resistive, 45°C	10x10 <sup>3</sup>
RM82/7 C (CO)		16 A, 415 VAC, resistive, 70°C	30x10 <sup>3</sup>
RM82/7 A/B (NO/NC)		240 VAC, 1phase, 2HP, 50°C	6x10 <sup>3</sup>

Mechanical endurance 10x10<sup>6</sup> operations



**Coil Data**

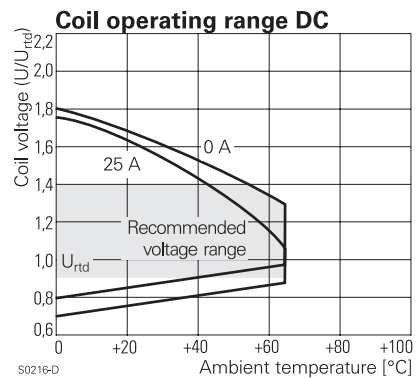
Coil voltage range	6 to 220VDC 12 to 400VAC
Operative range, IEC 61810	2
Coil insulation system according UL	class 130 (B)

**Coil versions, DC coil**

STD	LED bipolar	Coil code	LED+ PD <sup>3)</sup>	Rated voltage VDC	Coil resistance Ω±10% <sup>1)2)</sup>	Rated coil power W
006	L06	0A6	LA6	6	32	1.1
012	L12	0B2	LB2	12	110	1.3
024	L24	0C4	LC4	24	475	1.2
048	L48	0E8	LE8	48	2000	1.2
060	L60	0G0	LG0	60	2850	1.3
110	M10	1B0	MB0	110	10000 <sup>1)</sup>	1.2
221	N21	2C1	NC1	220	40000 <sup>2)</sup>	1.2

Operate voltage, DC coil 75% of rated coil voltage  
Release voltage, DC coil 10% of rated coil voltage

1) Coil resistance ±12%, 2) Coil resistance ±15%.  
3) Protection diode PD; standard polarity: +A1 / -A2.  
All figures are given for coil without pre-energization, at ambient temperature +23°C.



**Power Relay RM 8 (Continued)**

**Coil Data (continued)**

**Coil versions, AC coil**

Coil code	Rated voltage	Operate voltage	Release voltage	Coil resistance	Rated coil power
STD	LED	VAC	VAC	$\Omega_{\pm 10\%}^{(12)}$	VA
512	R12	12	9.6/10.2	3.6	19.5
524	R24	24	19.2/20.4	7.2	80
548	R48	48	38.4/40.8	14.4	320
560	R60	60	48.0/51.0	18.0	500
615	S15	115	92.0/97.8	34.5	1850
730	T30	230	184.0/195.5	69.0	7500
900	V00	400	320.0/340.0	120.0	23500 <sup>(2)</sup>

2) Coil resistance  $\pm 15\%$ .

All figures are given for coil without pre-energization, at ambient temperature +23°C.

**Insulation Data**

Initial dielectric strength	
between open contacts	1500Vrms
between contact and coil	2500Vrms
between adjacent contacts	4000Vrms
Initial surge withstand voltage	
between contact and coil	5000V(1.2/50 $\mu$ s)
between adjacent contacts	6000V(1.2/50 $\mu$ s)
Clearance/creepage	
between contact and coil	$\geq 4.0/14.9$ mm
between adjacent contacts	$\geq 15.3/15.3$ mm
Material group of insulation parts	IIIa

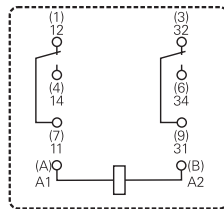
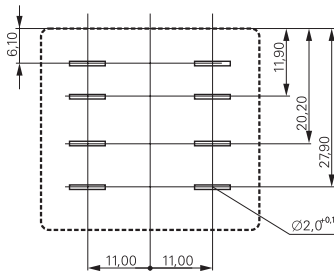
**Other Data**

Material compliance: EU RoHS/ELV, China RoHS, REACH, Halogen content refer to the Product Compliance Support Center at [www.te.com/customer-support/rohssupportcenter](http://www.te.com/customer-support/rohssupportcenter)

Ambient temperature	
for mounting/handling	-20 to +40°C
in operation	
DC coil	-40 to +65°C
AC coil	-40 to +40°C
16 A contact load	-40 to +70°C
Category of environmental protection	
IEC 61810	RT1 - dust protected
Vibration resistance (functional)	
form A (NO)/form B (NC)	10/5g, 30 to 150Hz
Terminal type	quick-connect
Cover retention, pull/push force	100/100N
Weight	81g
Packaging unit	10/25 pcs.

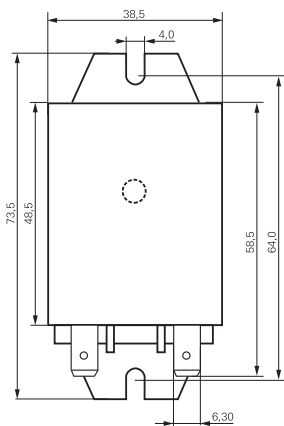
**Terminal assignment**

Bottom view on pins



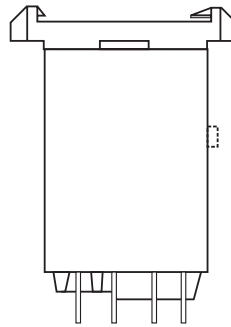
**Dimensions**

Cover with mounting brackets, 6.3mm quick connect terminals

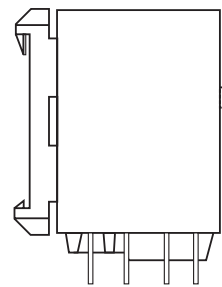


Cover with DIN-snap-on attachment

horizontal



vertical



**Power Relay RM 8** (Continued)

**Product code structure**

Typical product code **RM 8 2 9 024**

<b>Type</b>	RM Power relay RM8												
<b>Contact configuration</b>	8 2 form C contacts (2 CO), 25A												
<b>Version</b>	<table border="0"> <tr> <td>0</td> <td>Discontinued: AgCdO, without test button</td> <td>3</td> <td>Discontinued: AgCdO, with test button</td> </tr> <tr> <td>2</td> <td>AgNi90/10, without test button</td> <td>7</td> <td>AgNi90/10, with test button</td> </tr> </table>					0	Discontinued: AgCdO, without test button	3	Discontinued: AgCdO, with test button	2	AgNi90/10, without test button	7	AgNi90/10, with test button
0	Discontinued: AgCdO, without test button	3	Discontinued: AgCdO, with test button										
2	AgNi90/10, without test button	7	AgNi90/10, with test button										
<b>Enclosure</b>	<table border="0"> <tr> <td>5</td> <td>cover with mounting brackets, 6.3mm quick connect terminals</td> </tr> <tr> <td>8</td> <td>cover with DIN-snap-on attachment, horizontal, 6.3mm quick connect terminals</td> </tr> <tr> <td>9</td> <td>cover with DIN-snap-on attachment, vertical, 6.3mm quick connect terminals</td> </tr> </table>					5	cover with mounting brackets, 6.3mm quick connect terminals	8	cover with DIN-snap-on attachment, horizontal, 6.3mm quick connect terminals	9	cover with DIN-snap-on attachment, vertical, 6.3mm quick connect terminals		
5	cover with mounting brackets, 6.3mm quick connect terminals												
8	cover with DIN-snap-on attachment, horizontal, 6.3mm quick connect terminals												
9	cover with DIN-snap-on attachment, vertical, 6.3mm quick connect terminals												
<b>Coil</b>	Coil code: please refer to coil versions table												

1) AgCdO contacts are discontinued and replaced with AgNi contacts (see PCN E-18-003016)

Product code	Contacts	Cont. material	Version	Enclosure	Coil	Coil	Part number
RM825012	2 form C,	AgNi	Without	Mounting brackets	DC-coil	12VDC	4-1415546-4
RM825024	2 CO contacts	AgNi	test button	quick c. 6.3 mm	DC-coil	24VDC	7-1415544-3
RM825524	25 A	AgNi			AC-coil	24VAC	4-1415546-5
RM825615		AgNi			AC-coil	115VAC	4-1415546-6
RM825730		AgNi			AC-coil	230VAC	5-1415544-8
RM829024		AgNi		DIN-snap-on	DC-coil	24VDC	4-1415546-7
RM829730		AgNi		vertical	AC-coil	230VAC	4-1415546-8
RM875024		AgNi	With	Mounting brackets	DC-coil	24VDC	4-1415546-9
RM875048		AgNi	test button	quick c. 6.3 mm	DC-coil	48VDC	5-1415546-0
RM875730		AgNi			AC-coil	230VAC	5-1415546-1
RM878012		AgNi		DIN-snap-on	DC-coil	12VDC	5-1415546-2
RM878024		AgNi		horizontal	DC-coil	24VDC	5-1415546-3
RM879024		AgNi		DIN-snap-on	DC-coil	24VDC	5-1415546-4
RM879730		AgNi		vertical	AC-coil	230VAC	2-1415547-1

## X-ON Electronics

Largest Supplier of Electrical and Electronic Components

*Click to view similar products for [General Purpose Relays](#) category:*

*Click to view products by [TE Connectivity](#) manufacturer:*

Other Similar products are found below :

[PCN-105D3MH,000](#) [59641F200](#) [5JO-1000CD-SIL](#) [LY1SAC110120](#) [5X827E](#) [5X837F](#) [5X840F](#) [5X842F](#) [5X848E](#) [LY2N-AC120](#) [LY2S-AC220/240](#) [LY2-US-AC120](#) [LY3-US-AC120](#) [LY4F-UA-DC12](#) [LY4F-UA-DC24](#) [LY4F-US-AC120](#) [LY4F-US-AC240](#) [LY4F-US-DC24](#) [LY4F-VD-AC110](#) [LYQ20DC12](#) [M115C60](#) [M115N010](#) [M115N0150](#) [6031007G](#) [603-12D](#) [61211T0B4](#) [61212T400](#) [61222Q400](#) [61243B600](#) [61243C500](#) [61243Q400](#) [61311BOA2](#) [61311BOA6](#) [61311BOA8](#) [61311C0A2](#) [61311COA1](#) [61311COA6](#) [61311F0A2](#) [61311QOA1](#) [61311QOA4](#) [61311T0D6](#) [61311TOA6](#) [61311TOA7](#) [61311TOB3](#) [61311TOB4](#) [61311U0A6](#) [61312Q600](#) [61312T400](#) [61312T600](#) [61313U200](#)