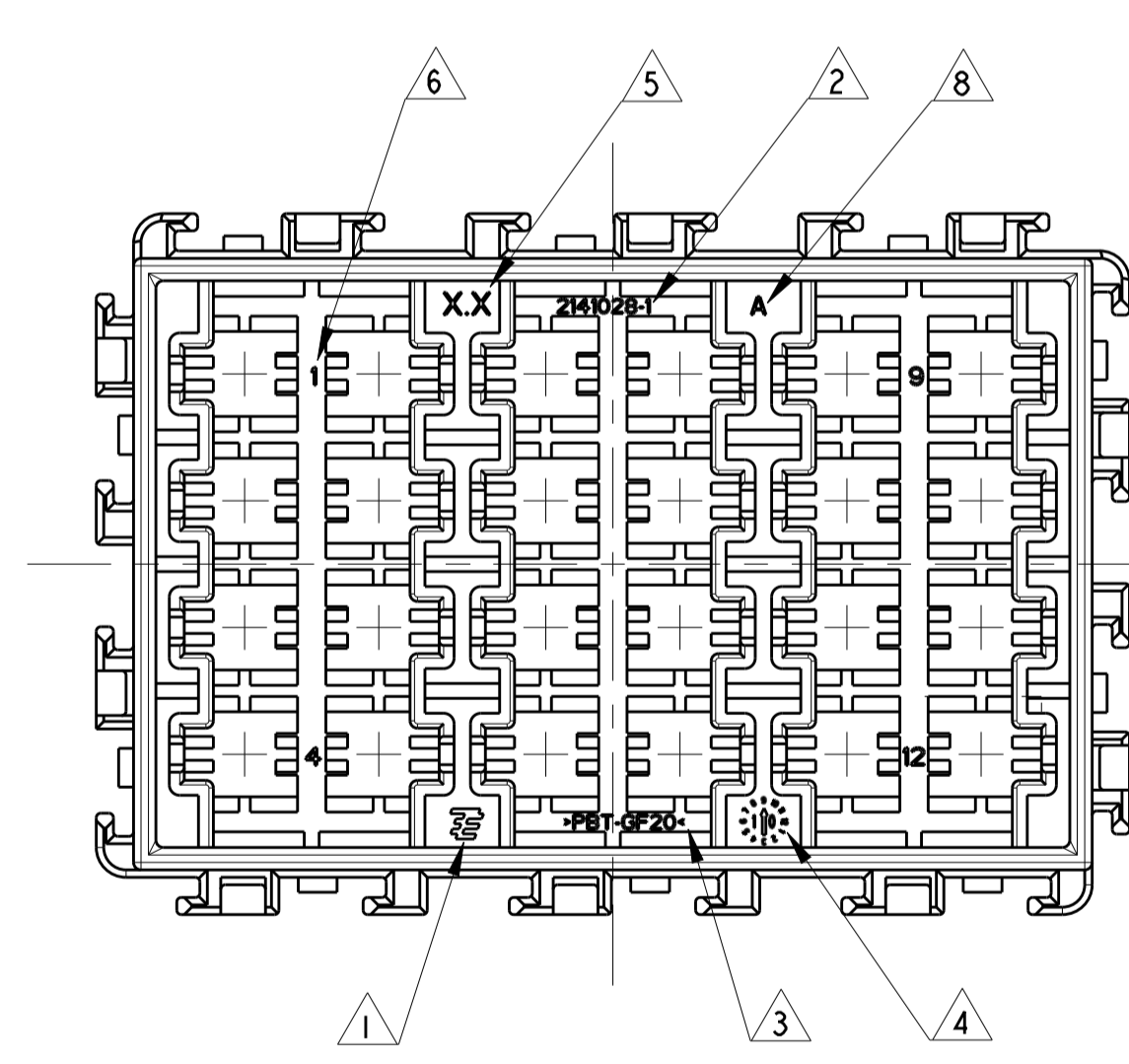
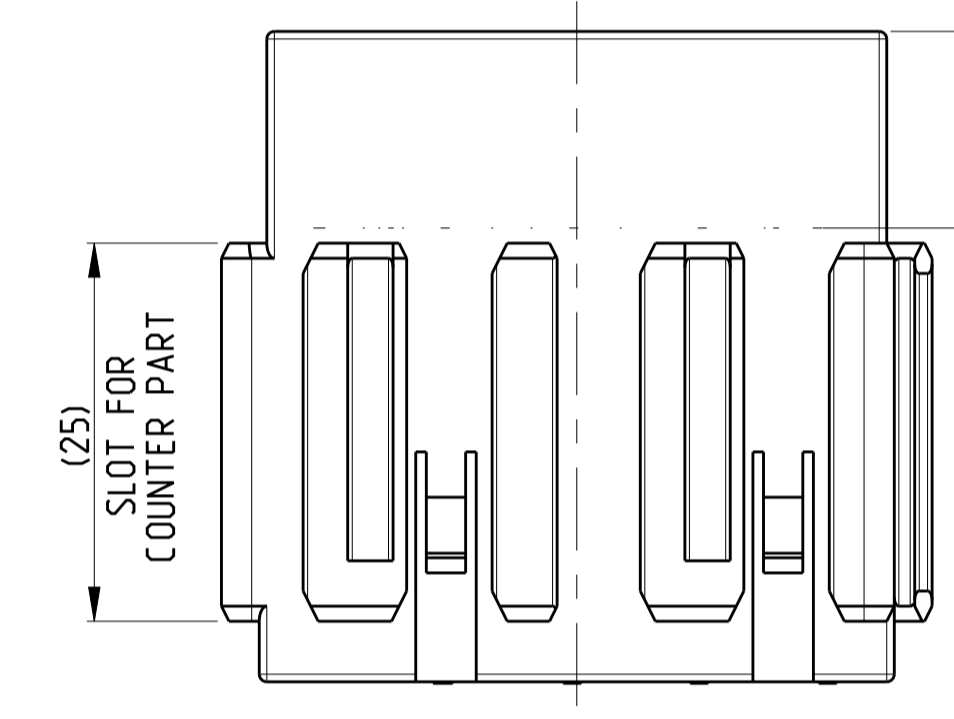
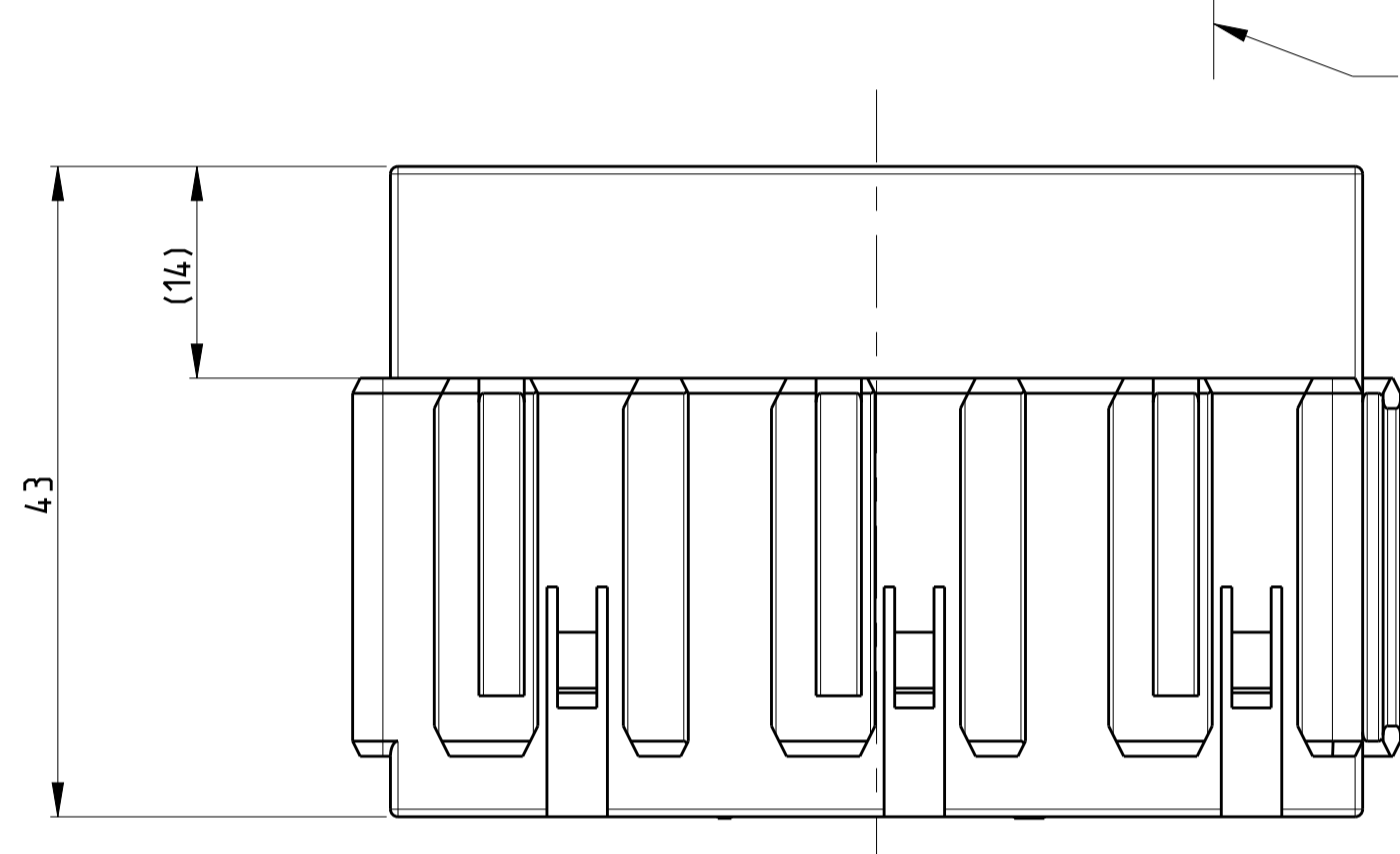
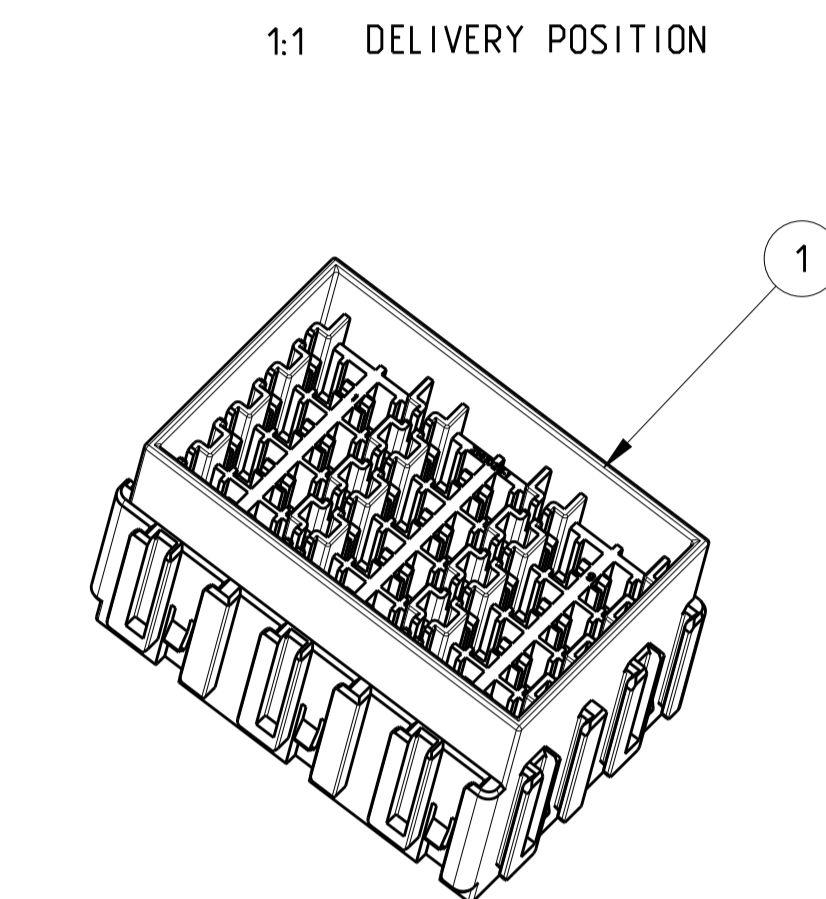
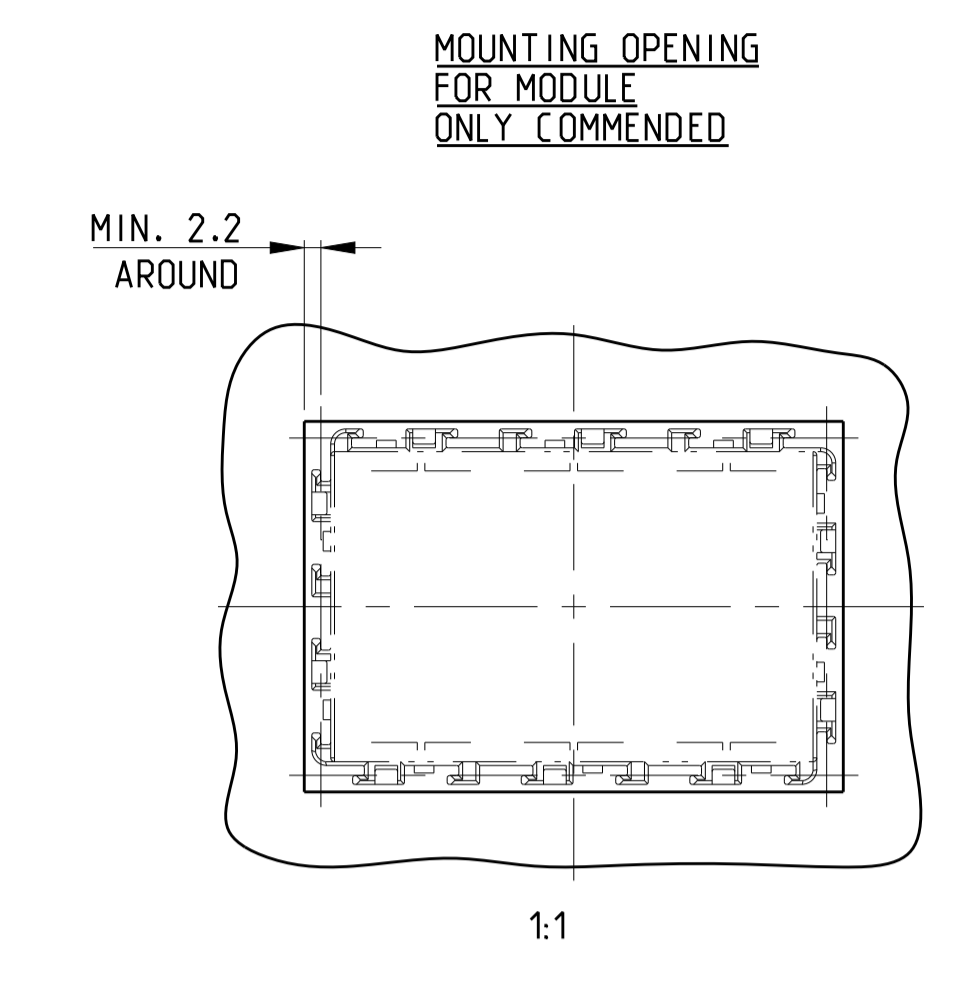
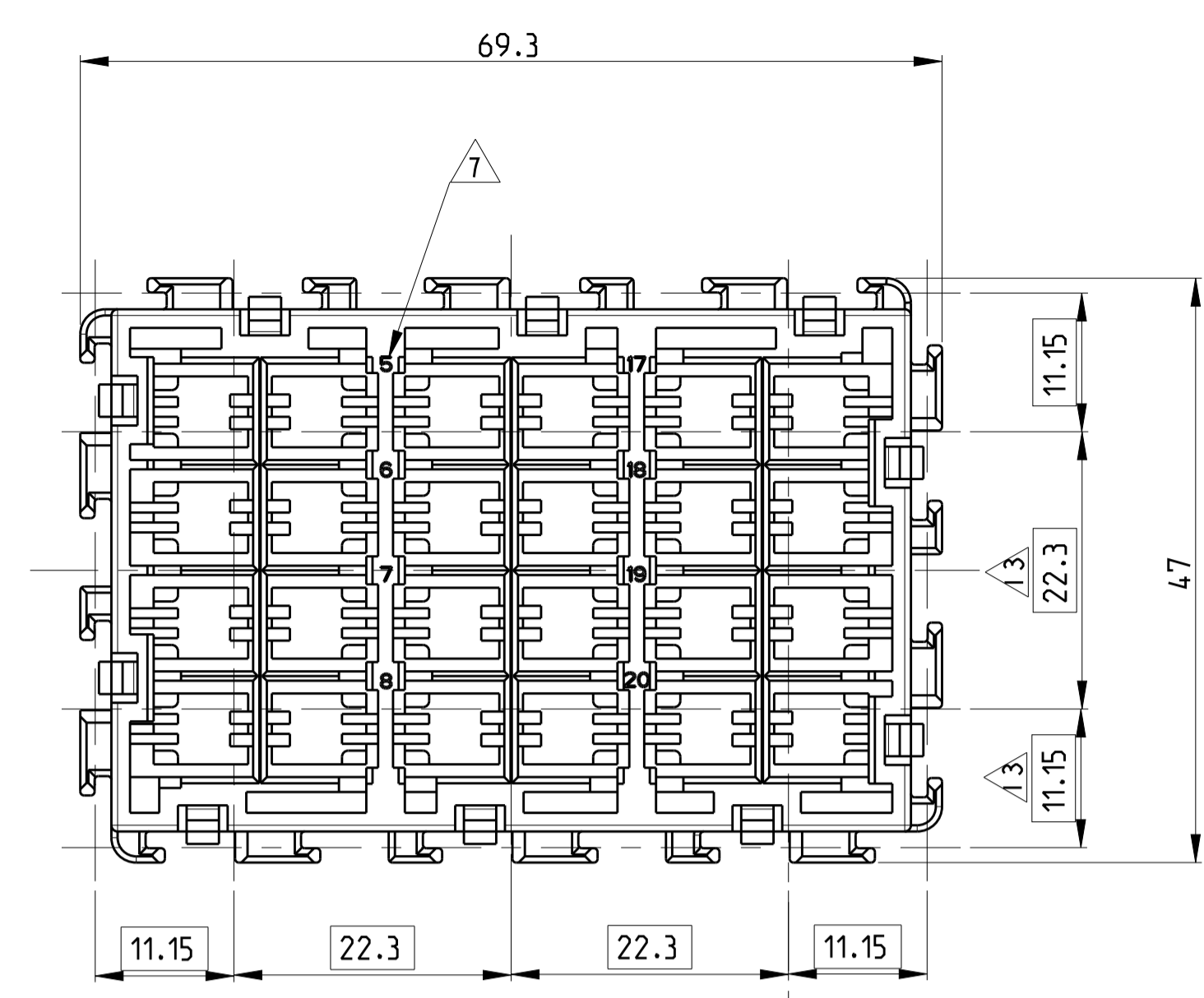
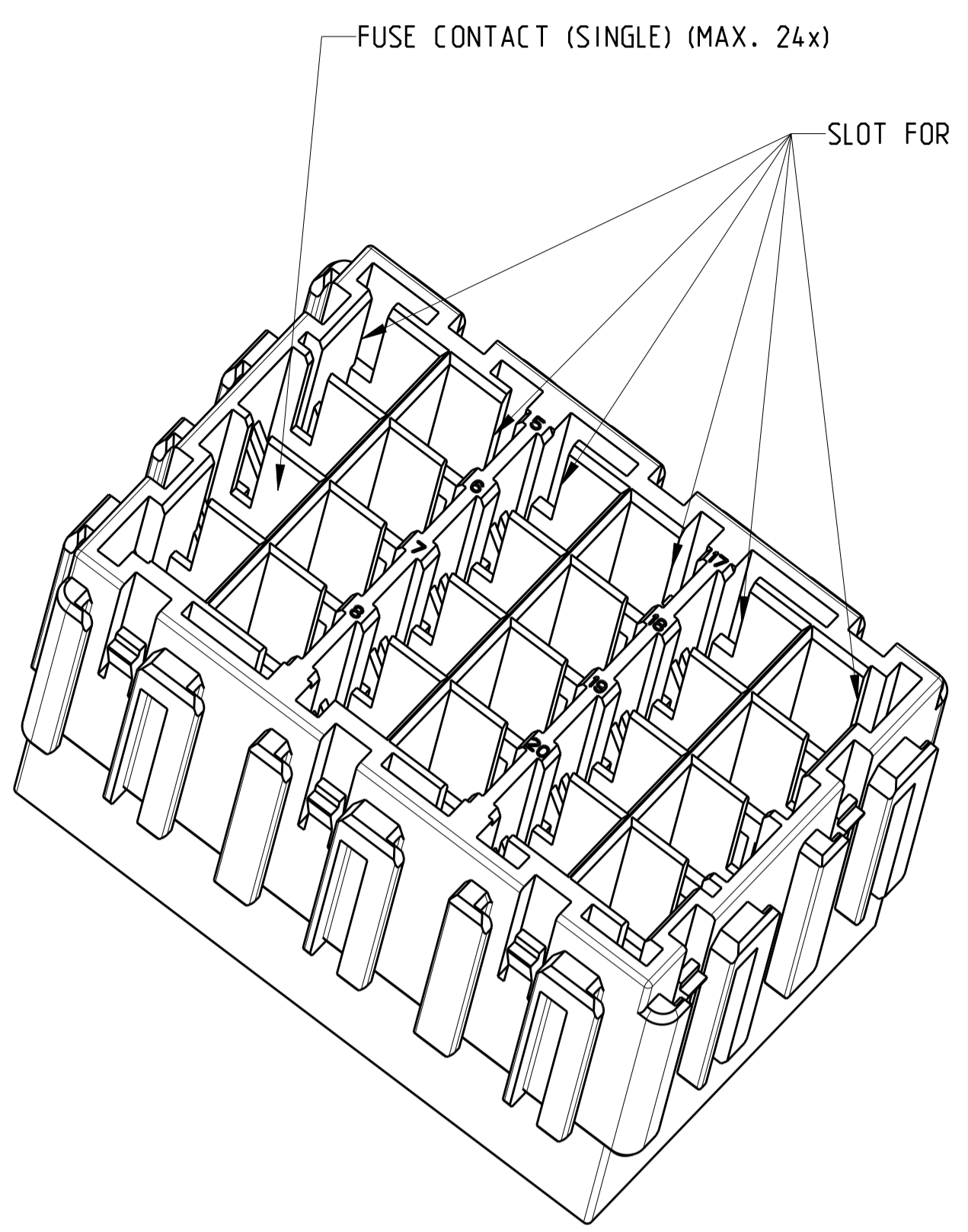


LOC	DIST	REVISIONS					
		P	LTR	DESCRIPTION	DATE	DWN	APVD
A1	-	A		NEW DRAWING	13SEP2010	Neu.	-
		A1		ECR-19-015112	30SEP2019	SRN	PT



- NOTES**
- 1 TE LOGO
  - 2 TE ORDER NUMBER
  - 3 MATERIAL MARKING
  - 4 PRODUCTION DATE
  - 5 TOOL CAVITY MARKING
  - 6 SLOT MARKING
  - 7 CAVITY MARKING
  - 8 REVISION NUMBER
  - 9 PACKAGING: BULK MATERIAL IN CARD BOARD BOX
  - 10 PARTS ARE TO BE FREE OF SCRATCHES, DISCOLORATION, SALT RESIDUE OR OTHER IMPERFECTIONS THAT MAY AFFECT FUNCTION OR FIT OF PART
  - 11
  - 12 OVER VIEW PRODUCT GROUP SEE : 114-94092
  - 13 SYSTEM PITCH DIMENSION'S FOR MULTIPLE PLUG IN SYSTEM
  - 14 PLEASE NOTE: MAX. CURRENT CARRYING CAPACITY OF MODULE SEE: 108-94263

881572-3 (4-WAY)			4.0-6.0 MM <sup>2</sup>	BRASS	PRE TIN PLATED
881572-2 (3-WAY)			4.0-6.0 MM <sup>2</sup>	BRASS	PRE TIN PLATED
881572-1 (2-WAY)			4.0-6.0 MM <sup>2</sup>	BRASS	PRE TIN PLATED
4-880492-3 (4-WAY)			2.5-4.0 MM <sup>2</sup>	COPPER IRON	TIN PLATED
4-880492-2 (4-WAY)			2.5-4.0 MM <sup>2</sup>	BRASS	PRE TIN PLATED
4-880492-1 (4-WAY)			2.5-4.0 MM <sup>2</sup>	BRASS	BLANC
3-880492-3 (3-WAY)			2.5-4.0 MM <sup>2</sup>	COPPER IRON	TIN PLATED
3-880492-2 (3-WAY)			2.5-4.0 MM <sup>2</sup>	BRASS	PRE TIN PLATED
3-880492-1 (3-WAY)			2.5-4.0 MM <sup>2</sup>	BRASS	BLANC
2-880492-3 (2-WAY)			2.5-4.0 MM <sup>2</sup>	COPPER IRON	TIN PLATED
2-880492-2 (2-WAY)			2.5-4.0 MM <sup>2</sup>	BRASS	PRE TIN PLATED
2-880492-1 (2-WAY)			2.5-4.0 MM <sup>2</sup>	BRASS	BLANC
4-880490-2 (4-WAY)			1.0-2.5 MM <sup>2</sup>	BRASS	PRE TIN PLATED
4-880490-1 (4-WAY)			1.0-2.5 MM <sup>2</sup>	BRASS	BLANC
3-880490-2 (3-WAY)			1.0-2.5 MM <sup>2</sup>	BRASS	PRE TIN PLATED
3-880490-1 (3-WAY)			1.0-2.5 MM <sup>2</sup>	BRASS	BLANC
2-880490-2 (2-WAY)			1.0-2.5 MM <sup>2</sup>	BRASS	PRE TIN PLATED
2-880490-1 (2-WAY)			1.0-2.5 MM <sup>2</sup>	BRASS	BLANC
TE ORDER NO	TE ORDER NO	SUPPLIER	WIRE RANGE	MATERIAL	FINISH
STRIP FORM	LOSE PIECE	-	MM <sup>2</sup>		

RECOMMENDED TERMINAL SYSTEM: FUSE CONTACT ( BUS-BAR BENT)

880399-5			2.5-5.0 MM <sup>2</sup>	BRASS	PRE TIN PLATED
880399-2			2.5-5.0 MM <sup>2</sup>	BRASS	PRE TIN PLATED
880399-1			2.5-5.0 MM <sup>2</sup>	BRASS	BLANC
880398-2			1.0-2.5 MM <sup>2</sup>	BRASS	PRE TIN PLATED
880398-1			1.0-2.5 MM <sup>2</sup>	BRASS	BLANC
880397-2			0.5-1.5 MM <sup>2</sup>	BRASS	PRE TIN PLATED
880397-1			0.5-1.5 MM <sup>2</sup>	BRASS	BLANC
TE ORDER NO	TE ORDER NO	SUPPLIER	WIRE RANGE	MATERIAL	FINISH
STRIP FORM	LOSE PIECE	-	MM <sup>2</sup>		

RECOMMENDED TERMINAL SYSTEM: FUSE CONTACT ( SINGLE )

USED WITH: 12

ALLOCATED FOR: MEDIUM FUSE 30A MAX. 14

NOMINAL VOLTAGE SYSTEM: 12V

TEMPERATURE CLASS: -40 TO 85 °C

VIBRATION CLASS: 1. ON BODY OR CHASSIS

SEALED CLASS: 0

ONLY BASIC DATA FOR DETAIL SEE PRODUCT SPEC

2141028-1	A	62	1	1x	HOUSING	PBT-GF20	BLACK	1
TE PART NO.	REV	WEIGHT [g]	POS.	QTY.	DESCRIPTION	MATERIAL	COLOR SURFACE	ITEM NO

THIS DRAWING IS A CONTROLLED DOCUMENT.

DIMENSIONS:	TOLERANCES UNLESS OTHERWISE SPECIFIED:
mm	0 PLC ±0.5
	1 PLC ±0.5
	2 PLC ±0.5
	4 PLC ±
ANGLES	±0.2°
FINISH	SEE TABLE

DWN	H. NEUMEUER	09APR2010
CHK	R. HECKER	01SEP2010
APVD	G. MUMMER	01SEP2010
PRODUCT SPEC	108-94263	
APPLICATION SPEC	114-94090	
WEIGHT	SEE TABLE	
CUSTOMER DRAWING	A1 00779	C=2141028

**STE** TE Connectivity

MEDIUM FUSE MODULE  
12POS PART

SCALE 5:1 SHEET 1 OF 1 REV A1

## X-ON Electronics

Largest Supplier of Electrical and Electronic Components

*Click to view similar products for [Automotive Relays](#) category:*

*Click to view products by [TE Connectivity](#) manufacturer:*

Other Similar products are found below :

[7-1414968-8](#) [7-1617345-6](#) [9-1617516-5](#) [G5CE1ASIDC12](#) [1393204-2](#) [1393302-3](#) [13Z99A115-0074](#) [1432872-1](#) [AR4-15F11-S01](#) [AR4-15H11](#)  
[1617057-2](#) [1617058-6](#) [1617518-5](#) [2-1617057-2](#) [2-1617057-6](#) [2-1617058-3](#) [CB1F-M-12V-H15](#) [898H-1AH-D-001-12VDC](#) [AR4-11F11](#)  
[AR4-15F11](#) [AR4-41F11](#) [24198-1](#) [4-1617057-0](#) [41FZ-200ACG-BSL](#) [5-1616920-2](#) [5-1617052-9](#) [5407-0011-HS](#) [CB1AF-M-12V-H59](#) [5-](#)  
[1617346-8](#) [103-1AH-C-12VDC](#) [V23134A1052X299](#) [6-1393302-1](#) [897H-1AH-D-R1-U01-12VDC](#) [FTR-P3CP024W1-06](#) [1-1617057-8](#) [3-](#)  
[1393305-1](#) [5436-0001-HS](#) [V23086-R1851-A502](#) [V23136-A0004-X075](#) [898H-1AH-D1SW-R1-12VDC](#) [RH4C1P2607](#) [RE031005](#)  
[V23134M0052G242](#) [1393204-1](#) [23234B0001X001-EV-144](#) [AZ979-1A-24D](#) [2-1904020-1](#) [V23134B0052C642](#) [V23134B0053C642](#) [V23234-](#)  
[A1001-X036](#)