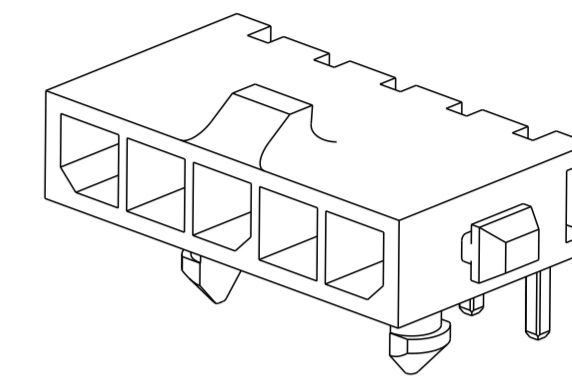
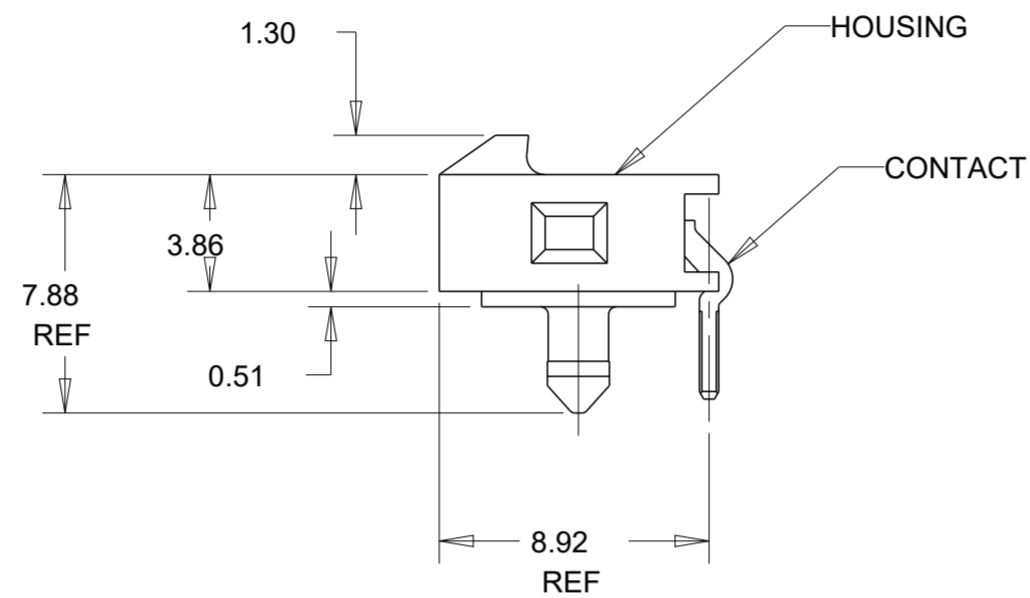
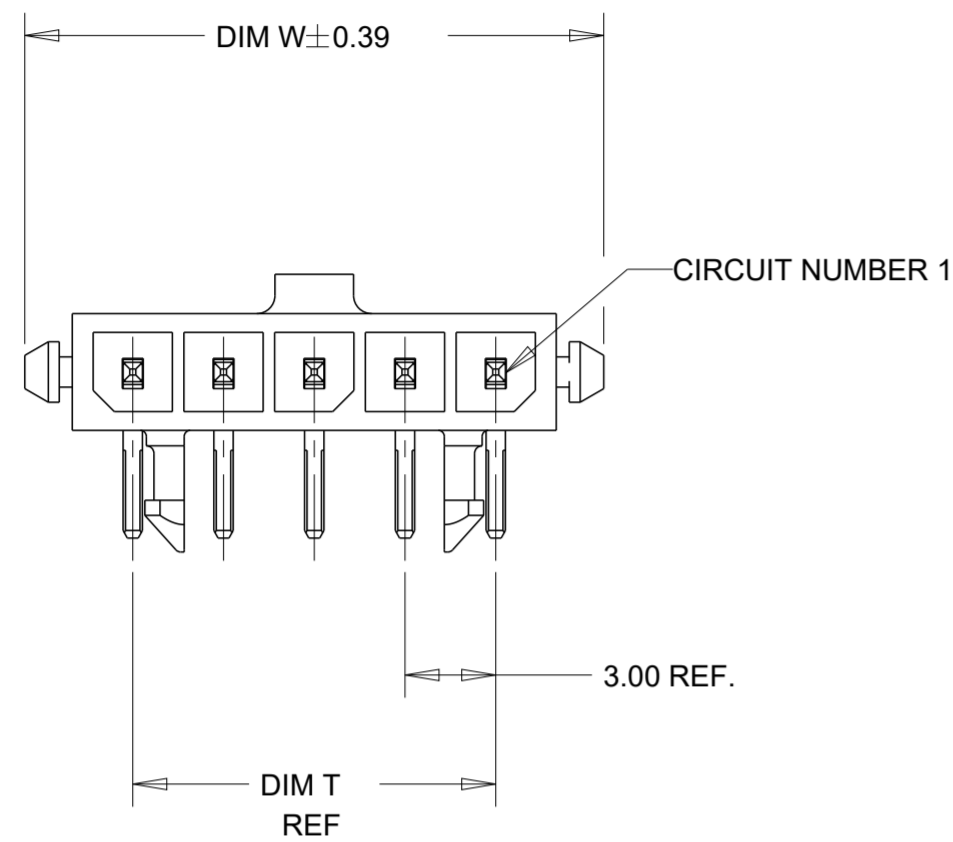
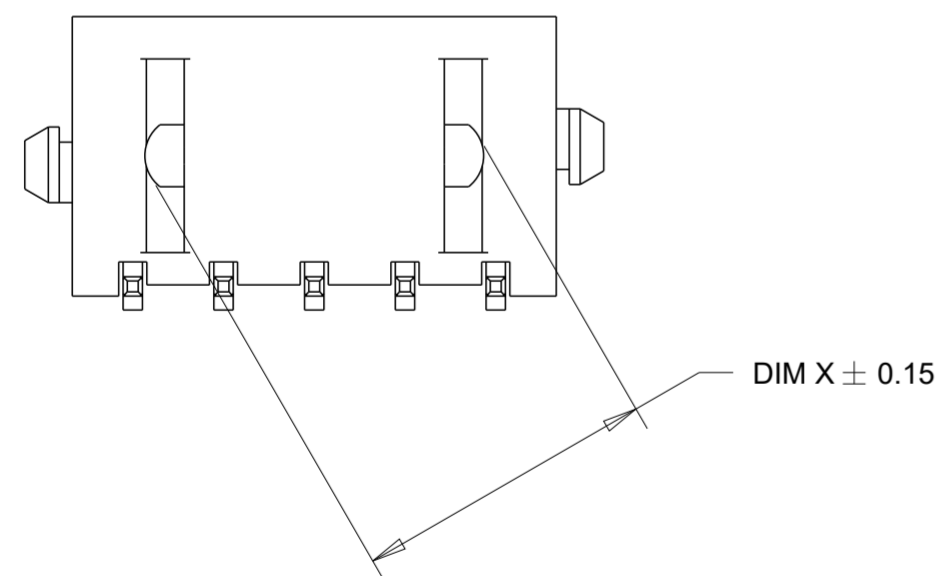


THIS DRAWING IS UNPUBLISHED. RELEASED FOR PUBLICATION 20
 © COPYRIGHT 20 BY - ALL RIGHTS RESERVED.

| REVISIONS | | | | | |
|-----------|-----|---------------------------|-----------|-----|------|
| P | LTR | DESCRIPTION | DATE | DWN | APVD |
| A3 | | REVISED PER ECR-16-011494 | 30MAY2017 | NK | CX |
| A4 | | ECO-19-006934 | 10MAY2019 | AP | WLS |
| B | | REVISED PER ECN-20-100924 | 15DEC2020 | WLS | VS |



- 1 MATERIAL: HOUSING - UL 94V-0 RATED HIGH TEMP NYLON, COLOR BLACK. CONTACTS - BRASS
- 2 RECOMMENDED PC BOARD THICKNESS OF 1.57.
- 3 PLATING: CONTACTS - 0.76µm MINIMUM GOLD ON MATING AREA. 2.54µm MINIMUM MATTE TIN ON SOLDER TAILS. ALL OVER 1.27µm MINIMUM NICKEL.
- 4 COUNTERPART RECOMENDED IS PN 1445022 (DASH ACCORDING TO NUMBER OF POSITION).
- 5 FOR REELING DIRECTION AND PACKAGING TYPE, SEE SPECIFICATION 114-13000.



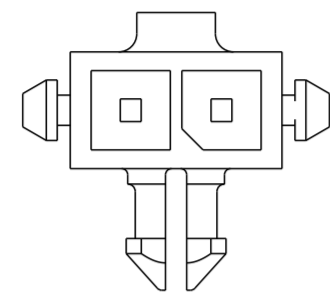
| 32.20 | 33.00 | 28.70 | 33.00 | 40.14 | 12 | 3-1445098-2 |
|-------|-------|-------|-------|-------|-------------|-------------|
| 29.20 | 30.00 | 25.70 | 30.00 | 37.14 | 11 | 3-1445098-1 |
| 26.20 | 27.00 | 22.70 | 27.00 | 34.14 | 10 | 3-1445098-0 |
| 23.20 | 24.00 | 19.70 | 24.00 | 31.14 | 9 | 2-1445098-9 |
| 20.20 | 21.00 | 16.70 | 21.00 | 28.14 | 8 | 2-1445098-8 |
| 17.20 | 18.00 | 13.70 | 18.00 | 25.14 | 7 | 2-1445098-7 |
| 14.20 | 15.00 | 10.70 | 15.00 | 22.14 | 6 | 2-1445098-6 |
| 11.20 | 12.00 | 7.70 | 12.00 | 19.14 | 5 | 2-1445098-5 |
| 8.00 | 9.00 | 4.70 | 9.00 | 16.14 | 4 | 2-1445098-4 |
| 3.30 | - | - | 6.00 | 13.14 | 3 | 2-1445098-3 |
| 3.30 | - | - | 3.00 | 10.14 | 2 | 2-1445098-2 |
| DIM X | DIM Z | DIM V | DIM T | DIM W | NO. OF POSN | PART NUMBER |

| | | | | |
|--|--|-----------------------------------|---|-----------------------|
| THIS DRAWING IS A CONTROLLED DOCUMENT. | | DWN J.ROOT 09OCT2000 | TE Connectivity | |
| DIMENSIONS: mm | | CHK K. WHITAKER 17-APR-2001 | | |
| TOLERANCES UNLESS OTHERWISE SPECIFIED: | | APVD C. JONES 17-APR-2001 | NAME RIGHT ANGLE THRU HOLE HEADER ASSY, 0.76 MIC GOLD CONTACTS, W/PLASTIC HOLDDOWNS, SGL ROW, MICRO MATE-N-LOK | |
| 0 PLC ± | | PRODUCT SPEC 108-1836 | SIZE A2 | |
| 1 PLC ± | | APPLICATION SPEC 114-13000 | CAGE CODE 00779 | DRAWING NO 1445098 |
| 2 PLC ±0.13 | | WEIGHT - | RESTRICTED TO - | |
| 3 PLC ± | | CUSTOMER DRAWING | | |
| 4 PLC ± | | SCALE 4:1 SHEET 1 OF 2 REV B | | |
| ANGLES ±1° | | | | |
| FINISH | | | | |

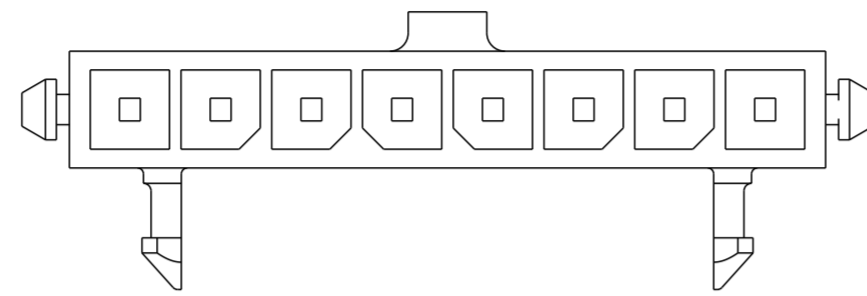
THIS DRAWING IS UNPUBLISHED. RELEASED FOR PUBLICATION 20
 © COPYRIGHT 20 BY - ALL RIGHTS RESERVED.

| REVISIONS | | | | |
|-----------|-----|-------------|------|------|
| P | LTR | DESCRIPTION | DATE | APVD |
| - | - | SEE SHEET 1 | - | - |
| | | | | |
| | | | | |

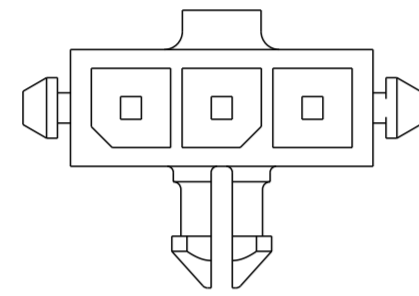
2 POS.



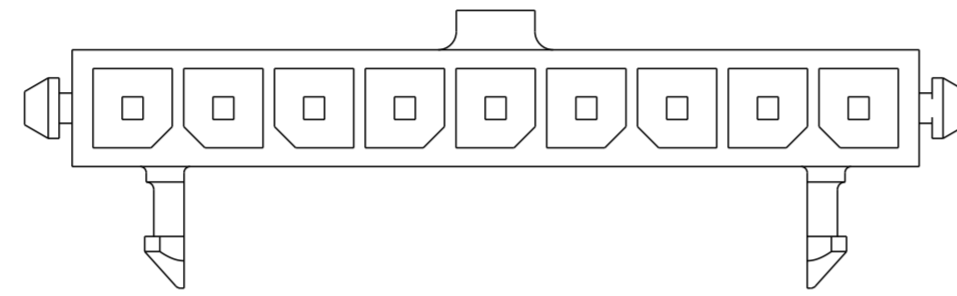
8 POS.



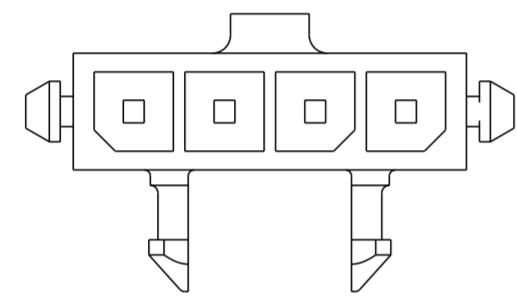
3 POS.



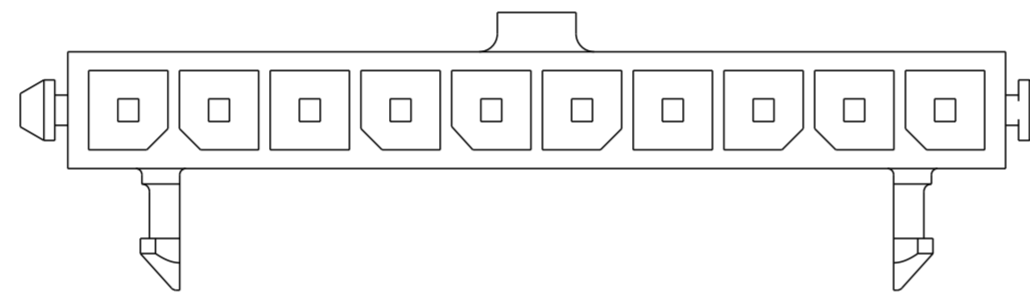
9 POS.



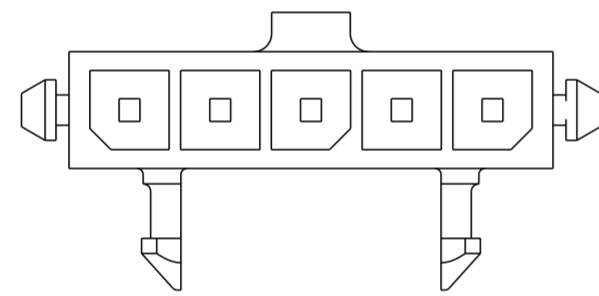
4 POS.



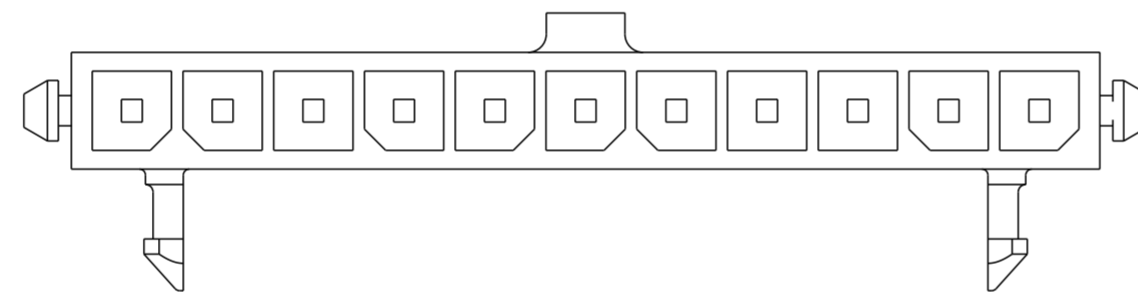
10 POS.



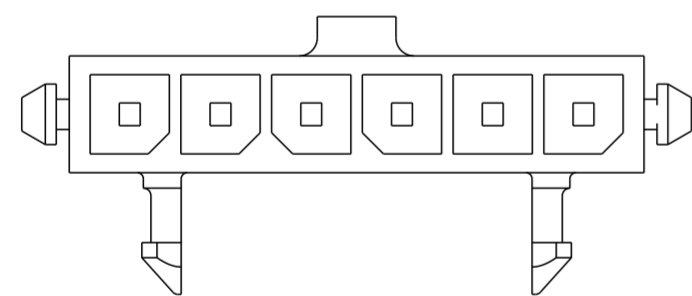
5 POS.



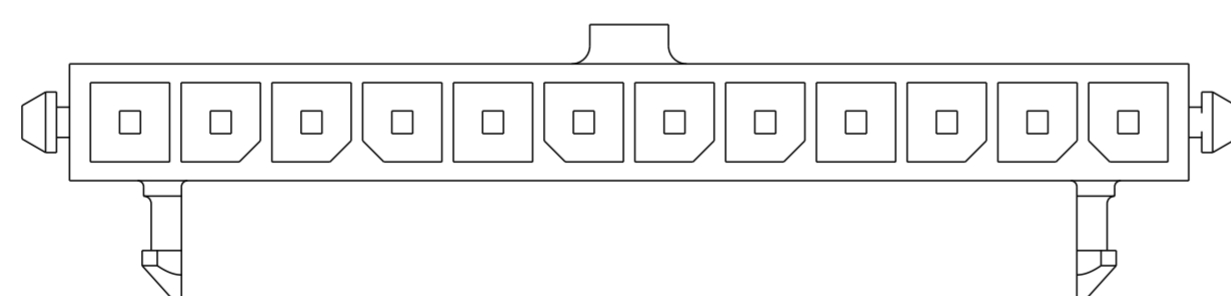
11 POS.



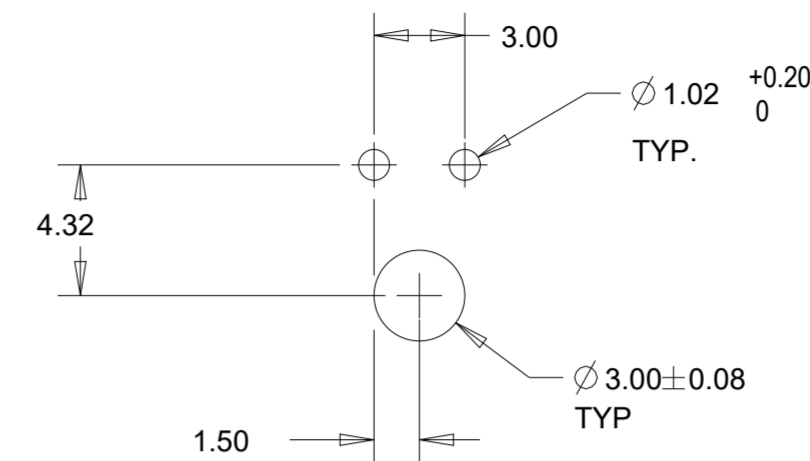
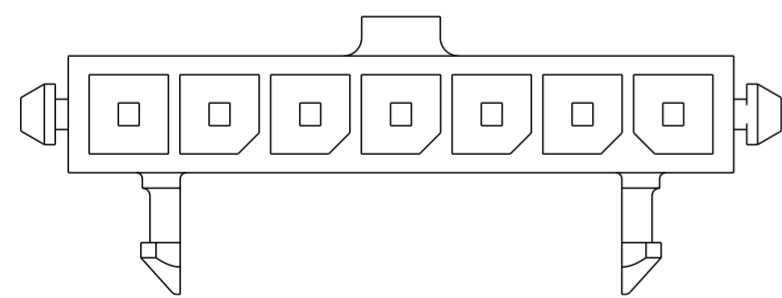
6 POS.



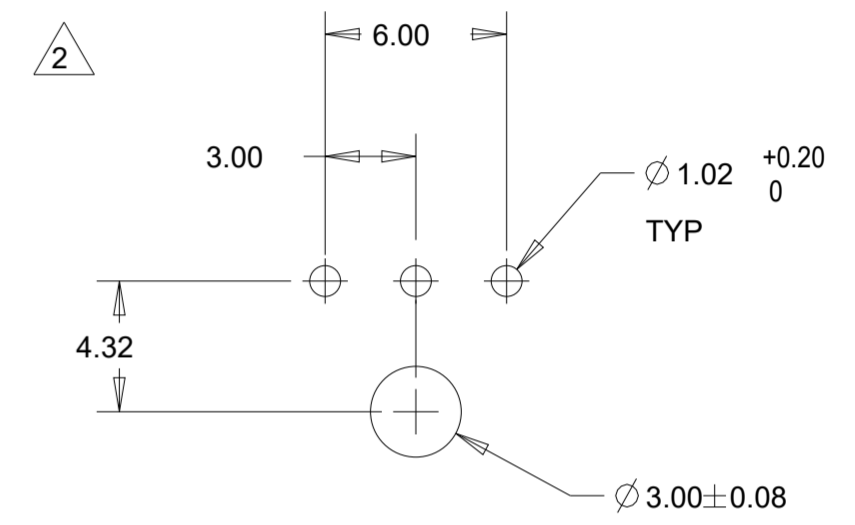
12 POS.



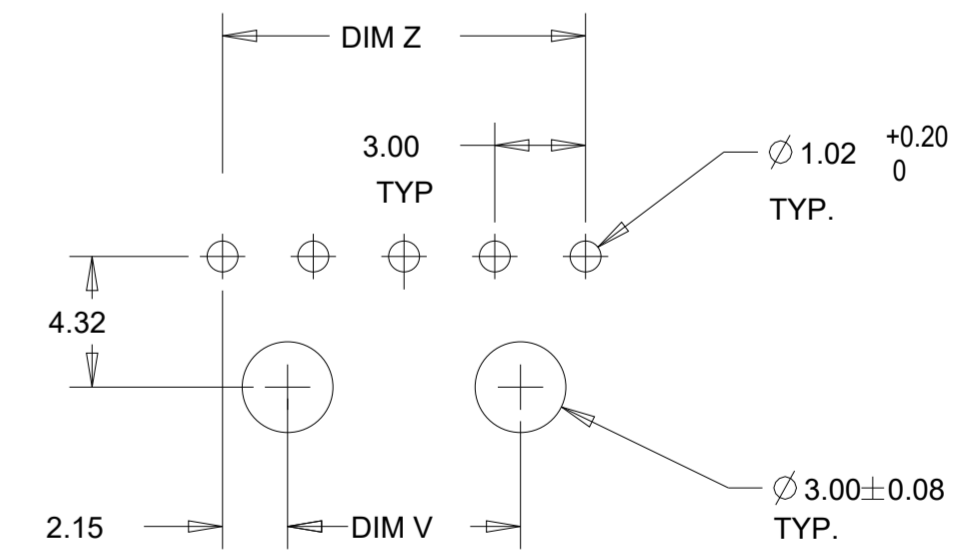
7 POS.



PCB LAYOUT FOR 2 POSITION COMPONENT SIDE



PCB LAYOUT FOR 3 POSITION COMPONENT SIDE



PCB LAYOUT FOR 4-12 POSITION COMPONENT SIDE

KEYING POSITION BI SIZE

| | | | | |
|--|------------|-----------------------------------|---|--------------------|
| THIS DRAWING IS A CONTROLLED DOCUMENT. | | DWN J.ROOT 09OCT2000 | TE Connectivity | |
| DIMENSIONS: mm | | CHK K. WHITAKER 17-APR-2001 | | |
| TOLERANCES UNLESS OTHERWISE SPECIFIED: | | APVD C. JONES 17-APR-2001 | NAME RIGHT ANGLE THRU HOLE HEADER ASSY, 0.76 MIC GOLD CONTACTS, W/PLASTIC HOLDDOWNS, SGL ROW, MICRO MATE-N-LOK | |
| 0 PLC ± | 1 PLC ± | PRODUCT SPEC | SIZE A2 | CAGE CODE 00779 |
| 2 PLC ±0.13 | 3 PLC ± | APPLICATION SPEC | DRAWING NO 1445098 | RESTRICTED TO |
| 4 PLC ± | ANGLES ±1° | WEIGHT | SCALE 5:1 | SHEET 2 OF 2 |
| MATERIAL | FINISH | CUSTOMER DRAWING | REV B | |

X-ON Electronics

Largest Supplier of Electrical and Electronic Components

Click to view similar products for [Pin & Socket Connectors](#) category:

Click to view products by [TE Connectivity](#) manufacturer:

Other Similar products are found below :

[6450822-1](#) [770392-1](#) [794042-1](#) [796885-1](#) [8-794535-1](#) [PLR3455ACS-222](#) [R929991004](#) [R929993003](#) [1403611-1](#) [1-480349-5](#) [152302-5](#)
[153211-2](#) [1586092-1](#) [1586129-1](#) [1586681-4](#) [1586700-1](#) [1586368-1](#) [1586380-1](#) [1586616-1](#) [1586680-5](#) [16-06-0038](#) [164164-5](#) [1-6609930-1](#)
[172296-1](#) [19-09-2035](#) [200503-1](#) [200788-2](#) [2029090-4](#) [2029095-4](#) [925061-7](#) [293734-4](#) [293737-2](#) [1-765362-4](#) [1871534-1](#) [200833-4](#)
[2008625-2](#) [2029027-2](#) [2029096-4](#) [R929991000](#) [R929991002](#) [R929993000](#) [319-10-101-00-005000](#) [319-10-102-00-001000](#) [319-10-104-00-001000](#) [319-10-105-00-001000](#) [319-10-108-00-001000](#) [319-10-112-00-006000](#) [39-01-8019](#) [319-10-101-00-001000](#) [319-10-102-00-005000](#)