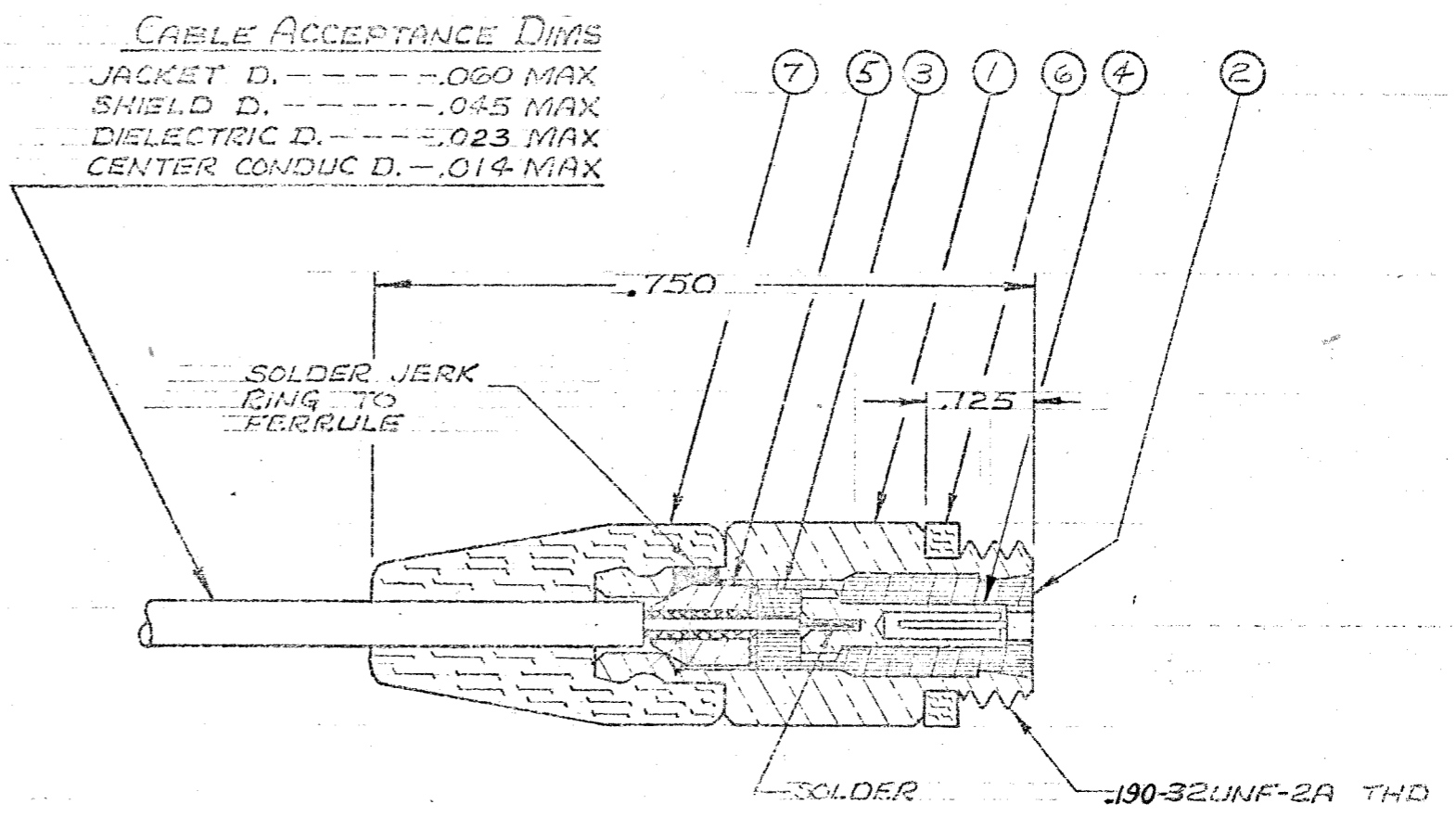


These drawings and specifications are the property of Microdot Inc. and shall not be divulged, reproduced or copied, or used as the basis for the manufacture or sale of any article without written permission of Microdot Inc.

ITEM	DESCRIPTION	CODE	TE P/N	MICRODOT P/N
①	FERRULE	① ⑤	2-1532244-2	005-3431-0002
②	INSULATOR	②	1532060-2	003-0179-0001
③	INSULATOR	②	4-1532068-2	005-3432-0001
④	SOCKET	③ ⑥	7-1532068-0	005-3700-0002
⑤	JERK RING	① ⑤	2-1532244-1	005-2752-0002
⑥	GASKET	④	4-1532060-3	003-0268-0001
⑦	BEND RELIEF CAP	④	7-1532063-9	003-1285-0002



CODE	MATERIAL, FINISH
①	BRASS PER QQ-B-626
②	TEFLON PER L-P-403
③	BERYLLIUM COPPER PER QQ-C-530
④	SILICONE RUBBER PER ZZ-R-765
⑤	SILVER PLATE PER TE 112-32-1, .0002/.0004 INCHES THICK OVER COPPER PLATE PER TE 112-300-2, .0001 INCHES MINIMUM
⑥	GOLD PLATE PER MIL-G-45204 TYPE II, CL. I

3. MICRODOT ASSY TOOL #DIO-0003-0000 REQD.
2. FOR ASSY SEE ASSY INSTRUCTION RF-ASMB-89.
1. THIS CONNECTOR MATE WITH ALL PLUGS IN SERIES S-50 AS LISTED IN MICRODOT CATALOG.

NOTES: UNLESS OTHERWISE SPECIFIED

ASSEMBLY		NO REQ'D	<b>A</b>	RELEASE FOR PROD.	DATE	APP	STANDARD TOLERANCES UNLESS OTHERWISE SPECIFIED DEC. ± .010 FRAG. ± _____ ANGLES ± _____ ECCENTRICITY MAX. T.I.R. _____ HOLE DIA. ± _____ SURFACE ROUGHNESS _____ MICRO INCHES THREADS TO MIL-C-7742 COMMERCIAL TOLERANCES APPLY TO STOCK DIMENSIONS	<b>MALCO</b> A MICRODOT COMPANY, INC. 306 PASADENA AVE., SO. PASADENA, CA	SURFACE TREATMENT NOTED	MATERIAL NOTED	APF APP	CHECKED BY <i>Hsu</i> DRAWN BY <i>Hsu</i>	PROD CODE 934	SCALE 5X	WT DATE 1/15/80	CODE CDM	DRAWING NUMBER 2-1532244-3	A
NEXT ASSEMBLIES		LET	ECN	REVISION DESCRIPTION	DATE	APP	JACK 351-0547-0025											

## X-ON Electronics

Largest Supplier of Electrical and Electronic Components

*Click to view similar products for [Headers & Wire Housings](#) category:*

*Click to view products by [TE Connectivity](#) manufacturer:*

Other Similar products are found below :

[95000-104TRLF](#) [10135584-644402LF](#) [DF62W-EP2022PCA](#) [95000-106TRLF](#) [DF62W-2022SCA](#) [DF62W-EP2022PC](#) [2203348](#) [DF62W-2022SC](#) [1084018](#) [1029039](#) [1084017](#) [802-10-012-10-002000](#) [1112640](#) [1112639](#) [891-007-9SS-BST1T](#) [000-34000](#) [0008550134](#) [0009482033](#) [0009507031](#) [57102-F02-18ULF](#) [57102-S06-03LF](#) [57202-S52-04LF](#) [PCN6-15S-2.5E](#) [0039019024](#) [58102-G61-06LF](#) [582553-1](#) [0009485154](#) [0009508121](#) [009176003701906](#) [0022285053](#) [0050291907](#) [018731A](#) [LY20-4P-DT1-P1E-BR](#) [02.125.8002.8](#) [60101931](#) [60598-1 \(Cut Strip\)](#) [M1625-3R/100](#) [61062-3](#) [61082-181009](#) [CSU011177004](#) [636-1427](#) [638009-1](#) [641938-9](#) [641991-4](#) [644168-1](#) [644827-2](#) [647662-1](#) [65039-019ELF](#) [65692-001LF](#) [65781-018](#)