

INSERTION AND EXTRACTION TOOLS

SURGICAL PRECISION FOR
GREATER EFFICIENCY

PRECISION TOOLS FOR UNPARALLELED PERFORMANCE

When it comes to high-precision tasks, working with the right tools equates to both a quality end product and greater operational efficiency for your business. On the other hand, using makeshift tools can undermine customer satisfaction—and your profitability.

That's why we provide complete insertion and extraction hand tool kits equipped to carry out precision tasks to the highest professional standards.

In addition to our standard offering, kits can also be assembled with a combination of tools, and dies tailored to meet your specific volume requirements.



Extraction Tool Kit PN 4-1579010-0

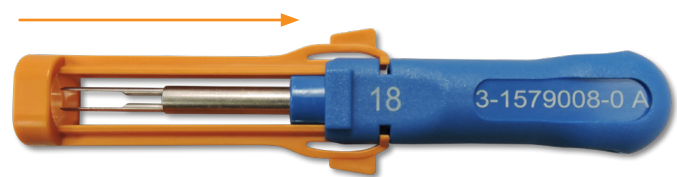
A key criteria in quality wire processing is to extract a terminal from the connector housing after termination without damaging either the terminal or the housing. This is especially important for re-work and repair, both at the OEM and in the after-market. TE's standard and customized insertion and extraction tool kits offer a range of features to maximize performance:

- **Customized**—tool kit can be customized to meet your exact requirements.
- **Smart design**—ergonomically designed tools offer a comfortable plastic handle and retractable protective cover that protects both the tool and the operator from inadvertent damage. Tools are individually labeled on the handles for quick and easy identification.
- **Rugged and branded**—tool kits come in sturdy plastic box with foam packing to prevent damage during transport or use. The casing can also be modified to promote your brand.
- **Helpful**—a fully illustrated booklet is included containing information on general contact extraction techniques and photos of all connectors compatible with the kit. Additionally, your local TE Connectivity Field Service organization offers various advanced operator training courses on crimp technology covering the use and availability of extraction tools.
- **A total solution**—TE Connectivity provides a complete turn key solution for electrical connection requirements—not only the connector products themselves—but all the tooling and equipment necessary to apply and process those products.

Please contact your TE Connectivity representative to discuss your individual kit requirements.



Retractable Cover Protects Your Investment and Hands

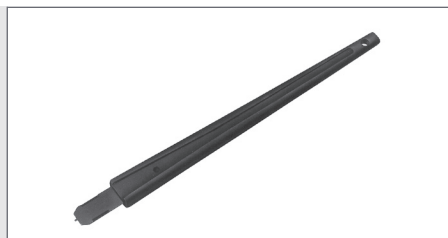
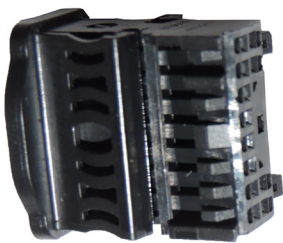
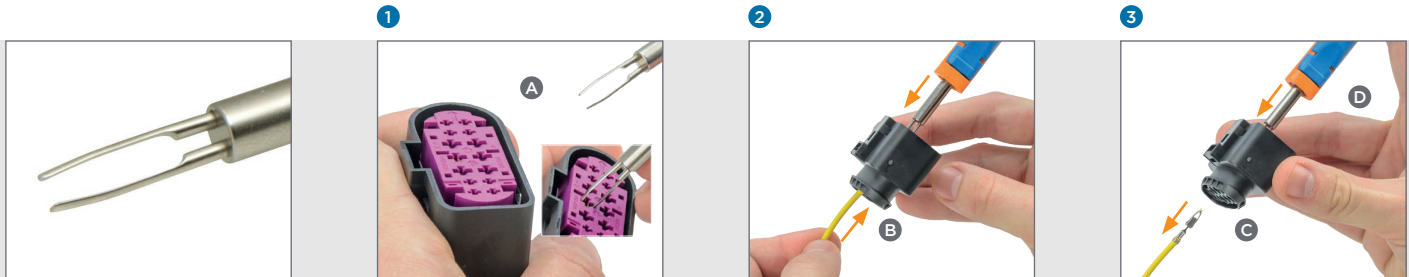


Tool in safe mode with extended protective cover.



Tool in ready mode with retracted protective cover.

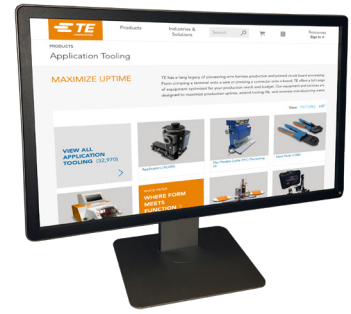
Making Terminal Insertion and Extraction as Easy as 1, 2, 3





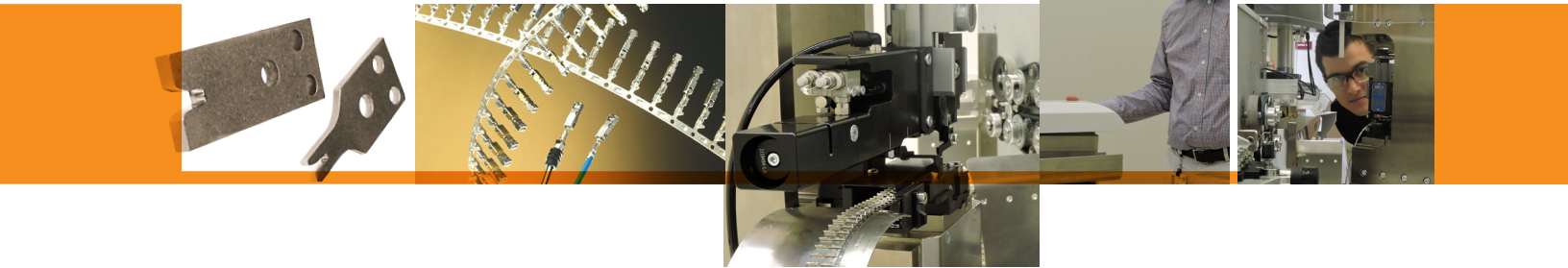
Let's Connect

Learn more about our comprehensive line of tooling solutions at tooling.te.com.
To find the right TE tooling for your needs, call us at **717-810-2082**
or email toolingSales@te.com.



TE Connectivity Technical Support Center

USA:	1.800.522.6752	UK:	+44.0800.267666
Canada:	1.800.522.6752	France:	+33.1.34.20.8686
Mexico:	+52.55.11.06.0800	Netherlands:	+31.73.624.6999
Latin/S. America	+54.11.4733.2200	China:	+86.400.820.6015
Germany:	+49.6151.607.1999		



Waste Not. Want Not.

Whether it's time or scrap, in manufacturing everyone knows that waste costs money. With our on-site certification and consultation services, we can help you:

- Reduce downtime
- Reduce scrap
- Maintain crimp quality
- Improve manufacturing efficiency



Time is Money.

In manufacturing downtime can be expensive. That's why TE is constantly working to improve product availability and delivery rates. With a strong global footprint, short

lead times and a strong distribution channel, TE has the equipment and the accessories to keep production online.

To check distributor stock and availability for your tooling needs go to: www.te.com/commerce/sck/cdi.do

te.com

TE Connectivity, TE Connectivity (logo) and Every Connection Counts are trademarks. All other logos, products and/or company names referred to herein might be trademarks of their respective owners.

The information given herein, including drawings, illustrations and schematics which are intended for illustration purposes only, is believed to be reliable. However, TE Connectivity makes no warranties as to its accuracy or completeness and disclaims any liability in connection with its use. TE Connectivity's obligations shall only be as set forth in TE Connectivity's Standard Terms and Conditions of Sale for this product and in no case will TE Connectivity be liable for any incidental, indirect or consequential damages arising out of the sale, resale, use or misuse of the product. Users of TE Connectivity products should make their own evaluation to determine the suitability of each such product for the specific application.

© 2018 TE Connectivity Ltd. family of companies All Rights Reserved.

2345721-1 10/18 Original

Contact us today to learn more

E-mail (Americas): fieldservicesnorthamerica@te.com

Phone (Americas): 800-722-1111 or 717-986-3434

E-mail (EMEA): TEFE1@te.com

Phone (EMEA): +49-6151-607-1518

For additional information download catalog no. 1-1307619-0 from tooling.te.com.

www.te.com

X-ON Electronics

Largest Supplier of Electrical and Electronic Components

Click to view similar products for [Extraction, Removal & Insertion Tools](#) category:

Click to view products by [TE Connectivity](#) manufacturer:

Other Similar products are found below :

[M8196914-08](#) [768211-2](#) [809-131](#) [844751-2](#) [8-59558-2](#) [91018-1](#) [12014013](#) [12093647](#) [1-21048-0](#) [R282867020](#) [12093078](#) [1-21048-6](#)
[12121897](#) [DCF.91.405.5LT](#) [1322](#) [15314260](#) [15350698](#) [15350707](#) [15430130](#) [1579018-4](#) [1643916-1](#) [1-679532-0](#) [1976593-3](#) [OUTEXT-0321](#)
[2-1579008-3](#) [2-1579008-4](#) [229694-7](#) [231106-1](#) [241469](#) [91040-3](#) [91040-7](#) [965004-000](#) [965069-000](#) [1738219-1](#) [ET-JL05-16](#) [FG 0300 146](#)
[3000](#) [FIT-6](#) [210S048](#) [2-1579007-9](#) [231879-1](#) [312138-3](#) [RJ11FODE](#) [356-162](#) [M8196914-10](#) [4-1579018-0](#) [430395-001](#) [483249-1](#) [5-](#)
[1579007-2](#) [5-1579007-9](#) [BPR10](#)