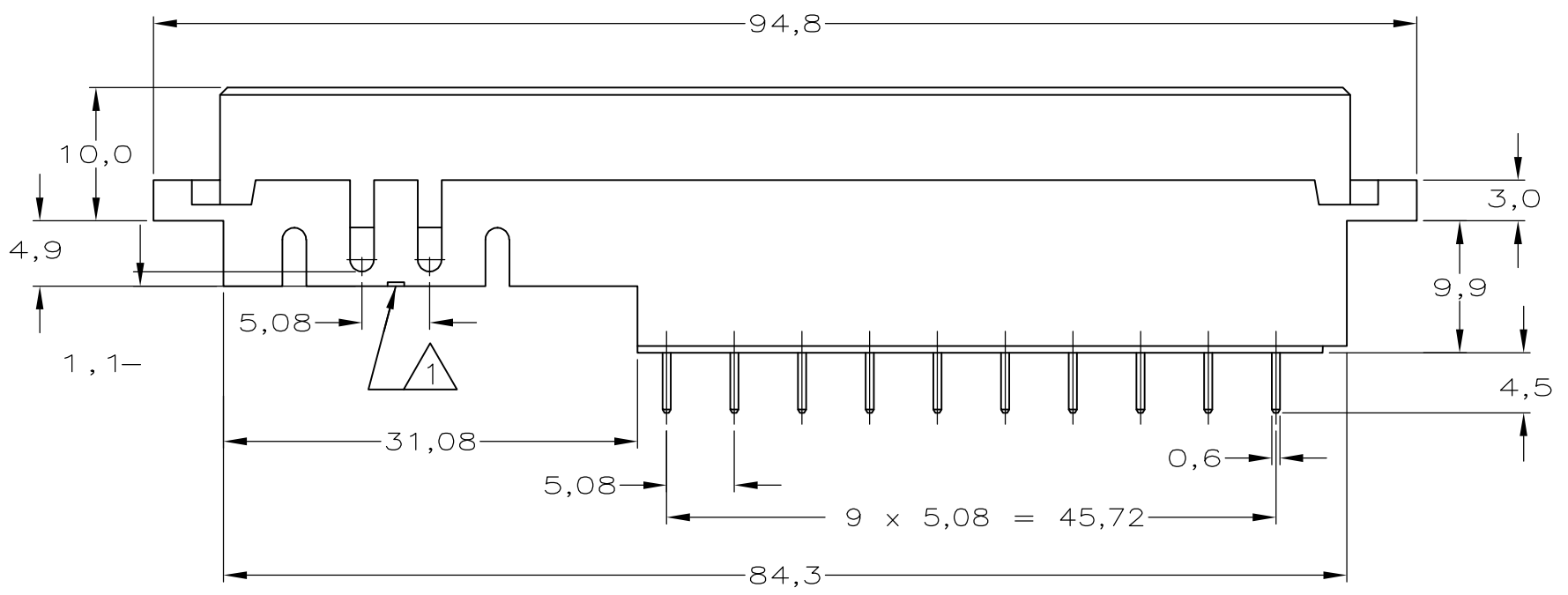
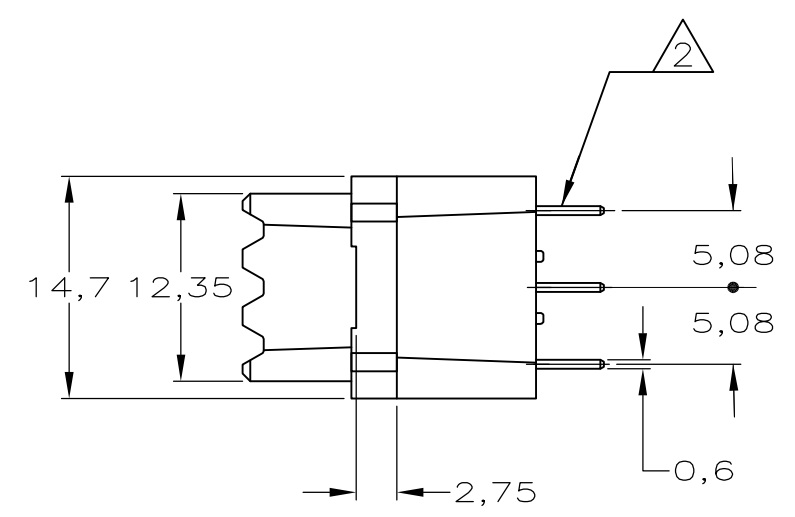
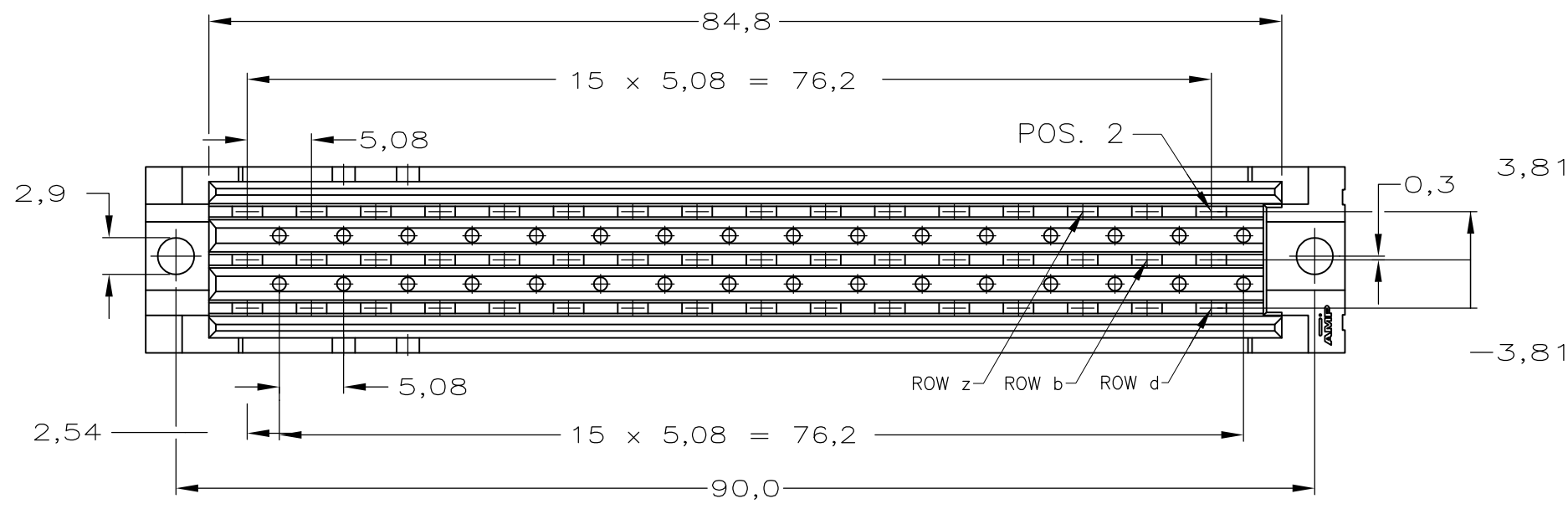


THIS DRAWING IS UNPUBLISHED. RELEASED FOR PUBLICATION
 © COPYRIGHT - By - ALL RIGHTS RESERVED.

REVISIONS					
P	LTR	DESCRIPTION	DATE	DWN	APVD
D		REVISED PER ECO-17-002455	23FEB2017	SY	SY




- NOTES:
- 1 2 CHAMFERS AT INSIDE FOR LOCATION OF REMOVAL TOOL FOR MODULE p.n.216519-1
 - 2 SOLDERPOSTS SUITABLE FOR 0,80 OR 1,0 NOM. DIA HOLES

X	X	X	X	X	X	X	X	X	X	d	ROW
X	X	X	X	X	X	X	X	X	X	b	ROW
X	X	X	X	X	X	X	X	X	X	z	ROW
0	0	0	0	0	0	0	0	0	0	0	POS

AN ASTERISK „X” DENOTES A CONTACT

CONFIRMS TO IEC60603-2 PERFORMANCE LEVEL II REQUIREMENT IN CONTACT AREA Sn OVER Ni IN SOLDER AREA	HOUSING: THERMOPL. POLYESTER G.F. COLOUR: GREY CONTACTS: PHOSPHORBRONZE	216520-4
FINISH	MATERIAL	PARTNUMBER

THIS DRAWING IS A CONTROLLED DOCUMENT.		DWN 15 NOV.1994 L.V.D.HEIJDEN	 TE Connectivity	
DIMENSIONS: mm		CHK - J.V.GUNSVEN		
TOLERANCES UNLESS OTHERWISE SPECIFIED:		APVD - L.V.SOEST	NAME	
0 PLC ± - 1 PLC ± - 2 PLC ± - 3 PLC ± - 4 PLC ± - ANGLES ± -		PRODUCT SPEC -	3x10 POS. WITH SOLDER POSTS 3x6 POS WITH FEATURE FOR CRIMP-ON, SNAP-IN .	
MATERIAL -		FINISH -	APPLICATION SPEC -	RESTRICTED TO -
		WEIGHT 0.000000	SIZE A3	CAGE CODE 00779
		CUSTOMER DRAWING	DRAWING NO C-216520	REV D
		SCALE -	SHEET 1 OF 1	

X-ON Electronics

Largest Supplier of Electrical and Electronic Components

Click to view similar products for [DIN 41612 Connectors](#) category:

Click to view products by [TE Connectivity](#) manufacturer:

Other Similar products are found below :

[004.767](#) [608489050008049](#) [691327-1](#) [74670-0732](#) [74680-0340](#) [75880-0015](#) [76453-0014](#) [86093159ALF](#) [9732967801](#) [QLC260R](#)
[120X10019X](#) [120X10089X](#) [122A10249X](#) [122A11089X](#) [122A13089X](#) [122A10089X](#) [122A10129X](#) [122A10349X](#) [122A13359X](#) [1377391-4](#)
[DIN-048CPC-SR1-MH](#) [1393583-2](#) [1393726-7](#) [140X10129X](#) [143-1913-000](#) [143-1908-000](#) [1484472-1](#) [2110070-1](#) [2110070-2](#) [CBC20T00-](#)
[008FDS5-0-1-002VR](#) [172699-5036](#) [2-1393557-4](#) [2-1437084-2](#) [394506](#) [419-2080-402](#) [V42254B2202C968](#) [419-2086-201](#) [419-2087-002](#)
[448657-1](#) [448847-3](#) [5-1393755-9](#) [02990000004](#) [054302](#) [043556](#) [09062483201750](#) [0850033067](#) [09031646555](#) [09061486901840](#)
[09185107324800](#) [102A10019X](#)