

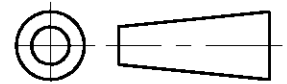
DO NOT SCALE

DIMENSIONS IN mm

METRIC

THIRD ANGLE

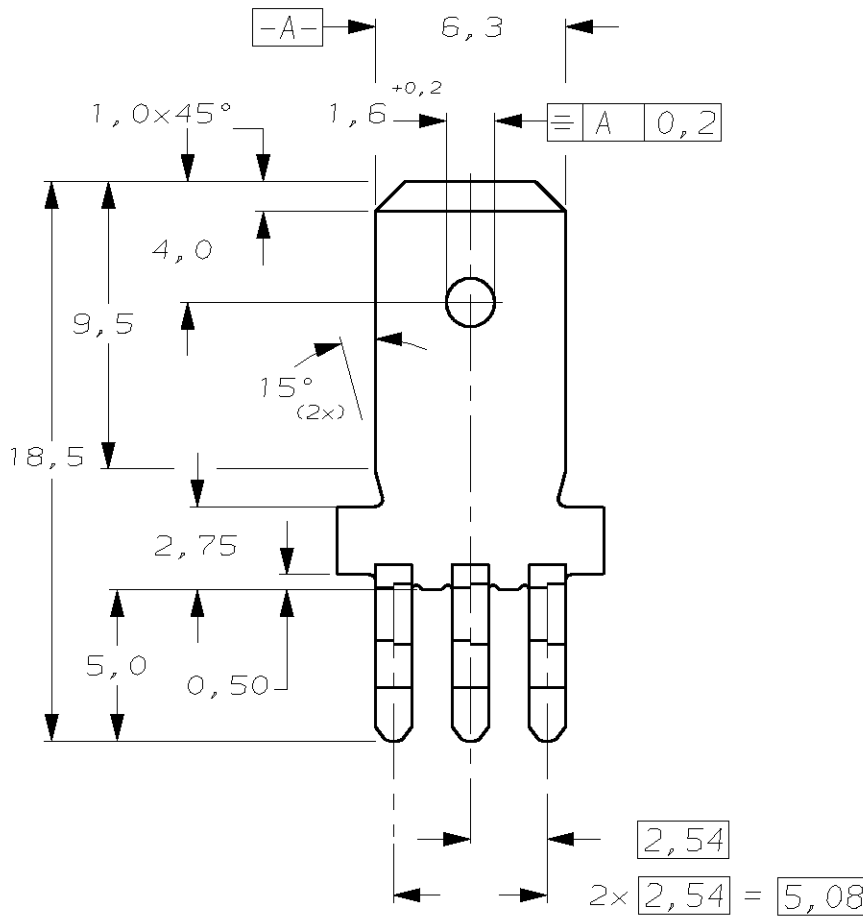
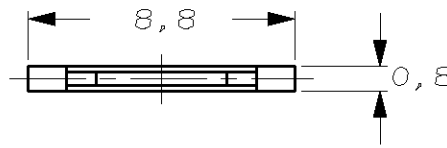
PROJECTION



P.C.B. HOLE DIM. ACTION PIN

DRILLED HOLE : 1,60 ± 0,025 mm
 FIN. HOLE : 1,39 to 1,54 mm
 AFTER REFLOW : 1,37 to 1,54 mm
 Cu-thks : 0,025 to 0,075 mm
 SnPb-thks : 0,004 to 0,010 mm

FOR LEADFREE PCB APPLICATIONS
 TESTS ARE NECESSARY



B1	NEW FINISH VERSION	HosseL	Bleicher	01 JUL 07	216843-3 MADE FROM 216842-5	PHOSPHORBRONZE	216843-3
B	LEADFREE PLATING, SPEC. ADAPTED; REVISION ADAPTED TO PART STATUS	MAH.	ZITZ	01 JUN 05	2,54µM MIN. SN; ALL OVER ACC. TO SPEC. 112-65-1	PHOSPHORBRONZE	216843-1
REV.	ECN-NO.	DRW.	APP.	DATE	FINISH	MATERIAL	PARTNUMBER

CUSTOMER DRAWING



AMP-HOLLAND B.V.
 's-Hertogenbosch, The Netherlands.

FOR REFERENCE ONLY
 WILL NOT BE UPDATED

THIS DRAWING IS UNPUBLISHED ~~RELEASED FOR PUBLICATION~~ = _____, 19-
 © COPYRIGHT 19- BY AMP-HOLLAND B.V.
 ALL INTERNATIONAL RIGHTS RESERVED.
 AMP PRODUCTS MAY BE COVERED BY U.S. AND FOREIGN PATENTS AND/OR PATENTS PENDING.

DR.	DATE	WIRE RANGE	NAME	REV. DATE
R.v.Lokven	07.12.89	-	.250'' SERIES TAB WITH ACTION PIN,	D M Y
CHK.	DATE	INSUL. RANGE	FOR POSITIVE LOCK RECEPTACLE.	02 23 00
R.v.Lokven	03.01.90	-	(1,6-3,2 P.C. BOARD THICKNESS.)	
APP.	DATE	SIZE	SHEET	DWG. No.
L.v.Soest	03.01.90	A4	1 OF 1	216843
				REV. LTR.
				B1

X-ON Electronics

Largest Supplier of Electrical and Electronic Components

Click to view similar products for [Terminals](#) category:

Click to view products by [TE Connectivity](#) manufacturer:

Other Similar products are found below :

[00-054007-01074-6](#) [00-054007-70206-1](#) [00-054007-70210-8](#) [00-054007-70217-7](#) [00-054007-70226-9](#) [00-054007-70228-3](#) [00-054007-70248-1](#) [00-054007-70256-6](#) [00-054007-70301-3](#) [00-054007-70316-7](#) [0-0320562-0](#) [00-054007-49560-4](#) [00-054007-70209-2](#) [00-054007-70225-2](#) [00-054007-70227-6](#) [00-054007-70231-3](#) [00-054007-70241-2](#) [00-054007-70242-9](#) [00-054007-70244-3](#) [00-054007-70246-7](#) [00-054007-70263-4](#) [00-054007-70288-7](#) [00-054007-70290-0](#) [00-054007-70300-6](#) [00-054007-70304-4](#) [01-2065-1-0216](#) [01-2900-1-04412](#) [00581P0075](#) [600TS-10](#) [60205-1](#) [604200-1](#) [605601-1](#) [60598-1-CUT-TAPE](#) [61314-6-C](#) [61810-3](#) [61-S](#) [61-SN](#) [626-0194](#) [62-NBM-A](#) [62-SN](#) [62-SP](#) [63-S](#) [640179-1](#) [M55155/059I03](#) [M55155/079C01](#) [M55155/099H02](#) [M55155/109H01](#) [M55155/109H02](#) [M55155/12XH05](#) [M55155/16XH02](#)