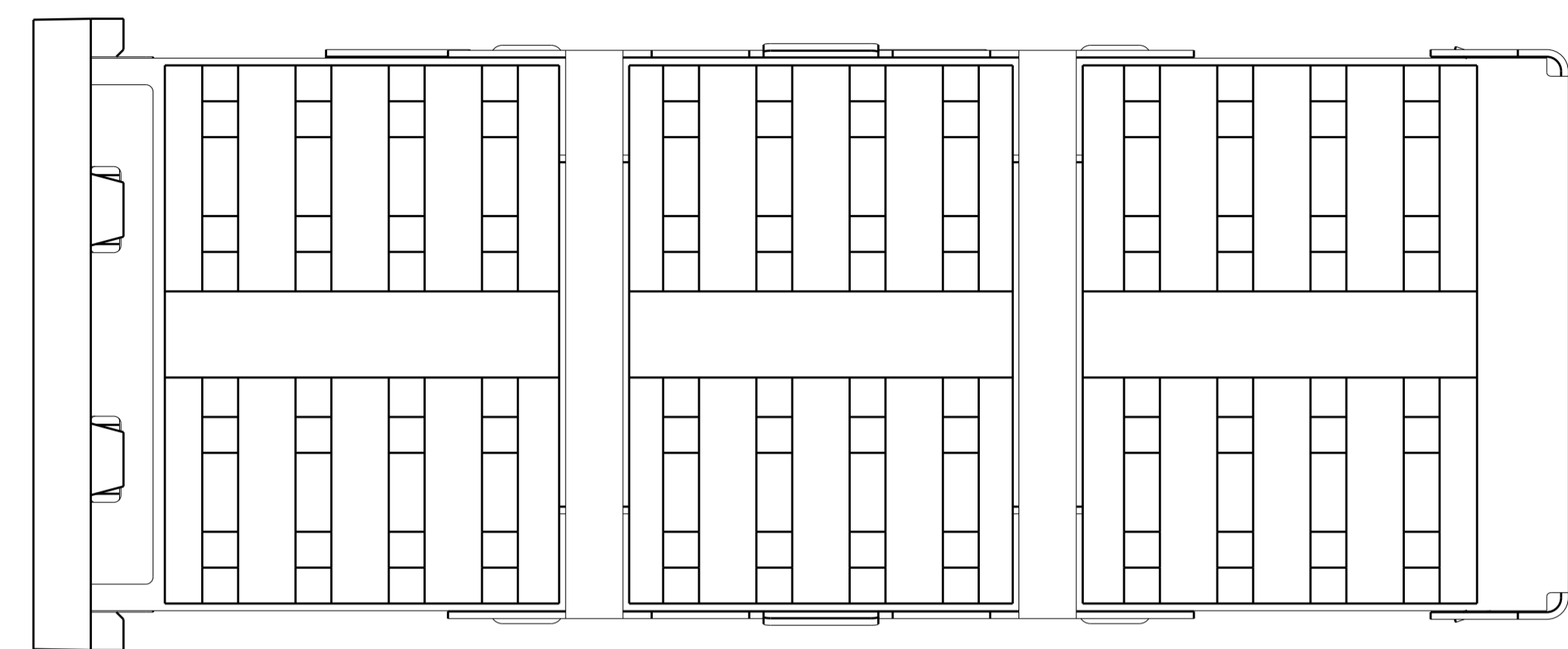
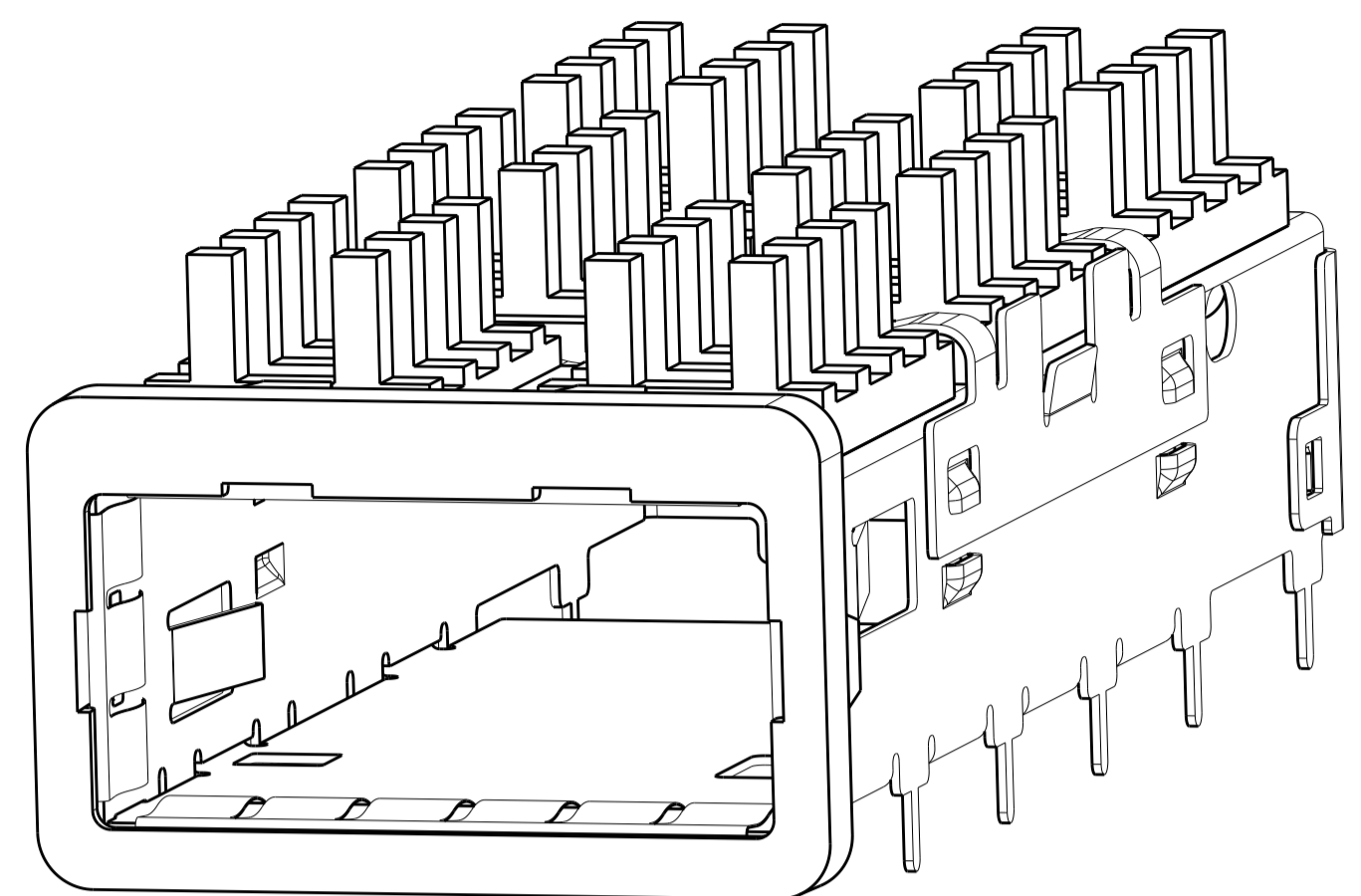
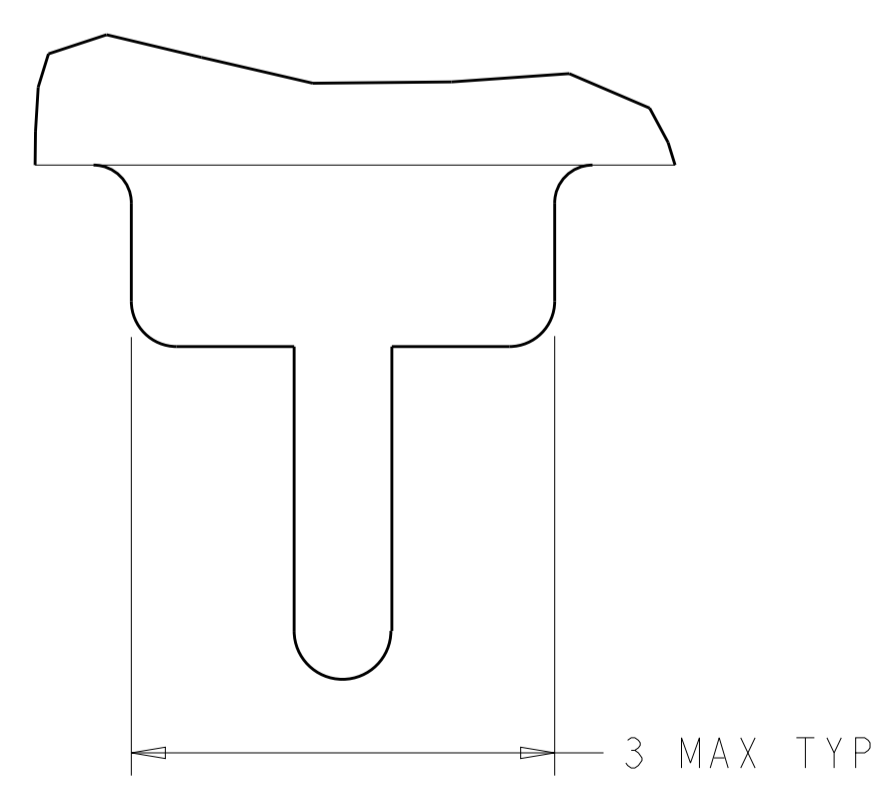
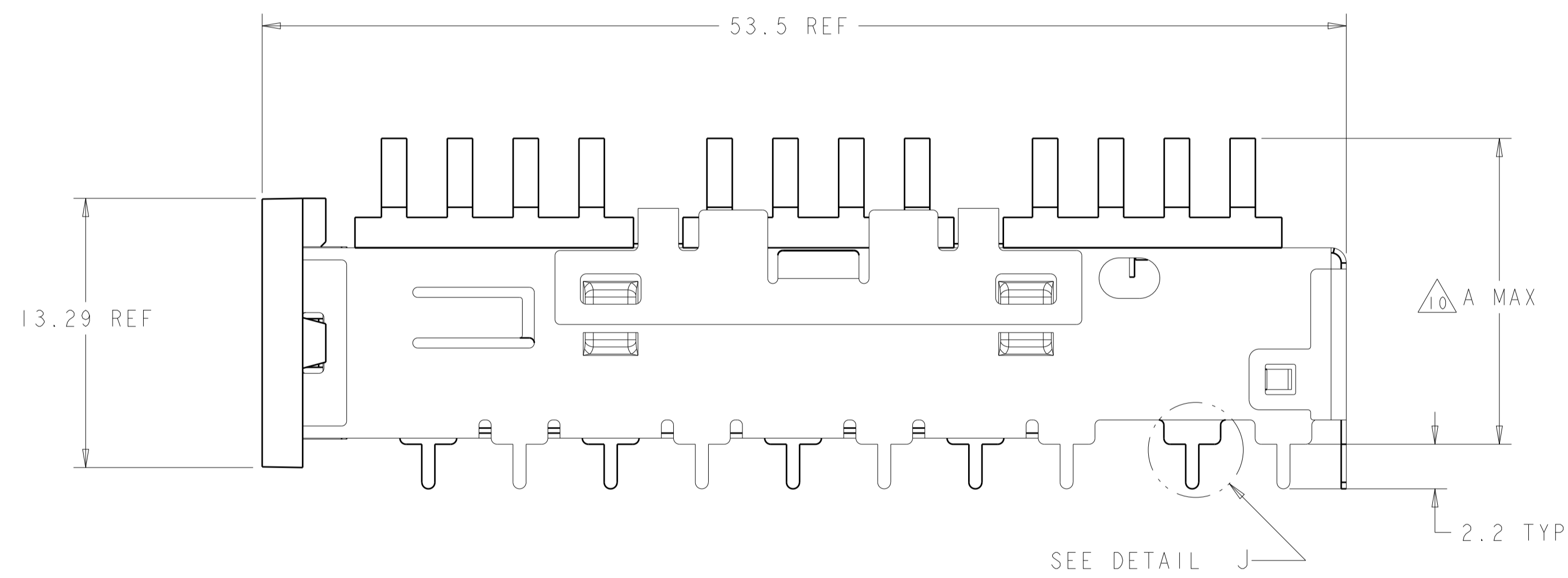
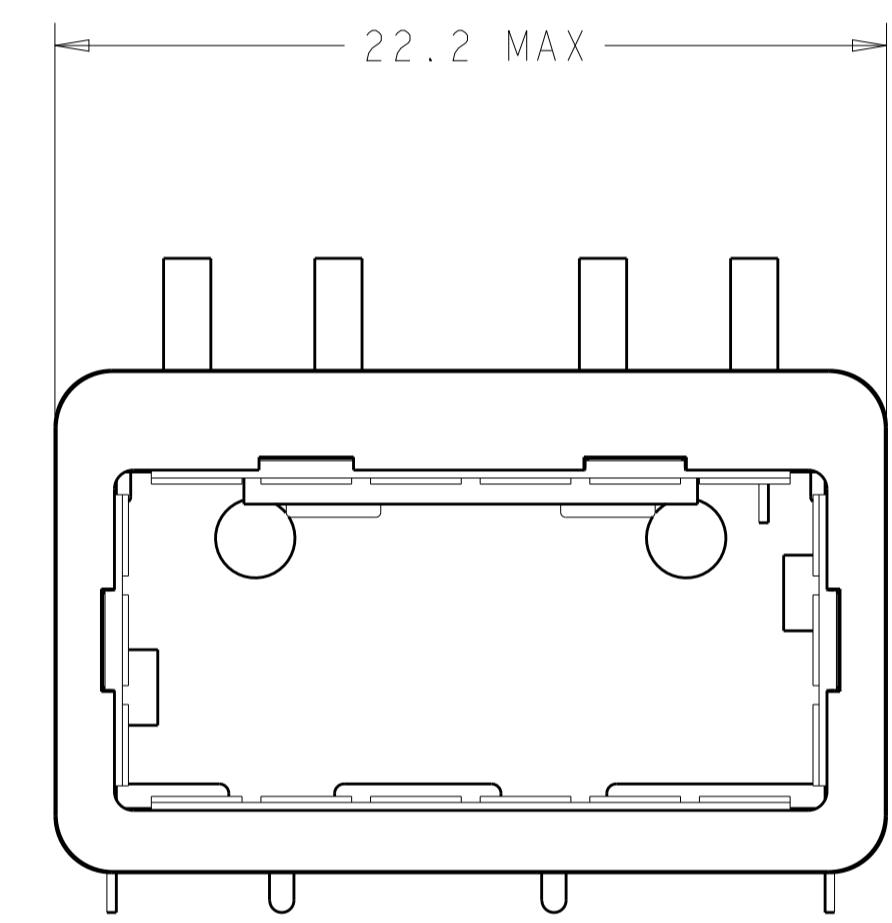


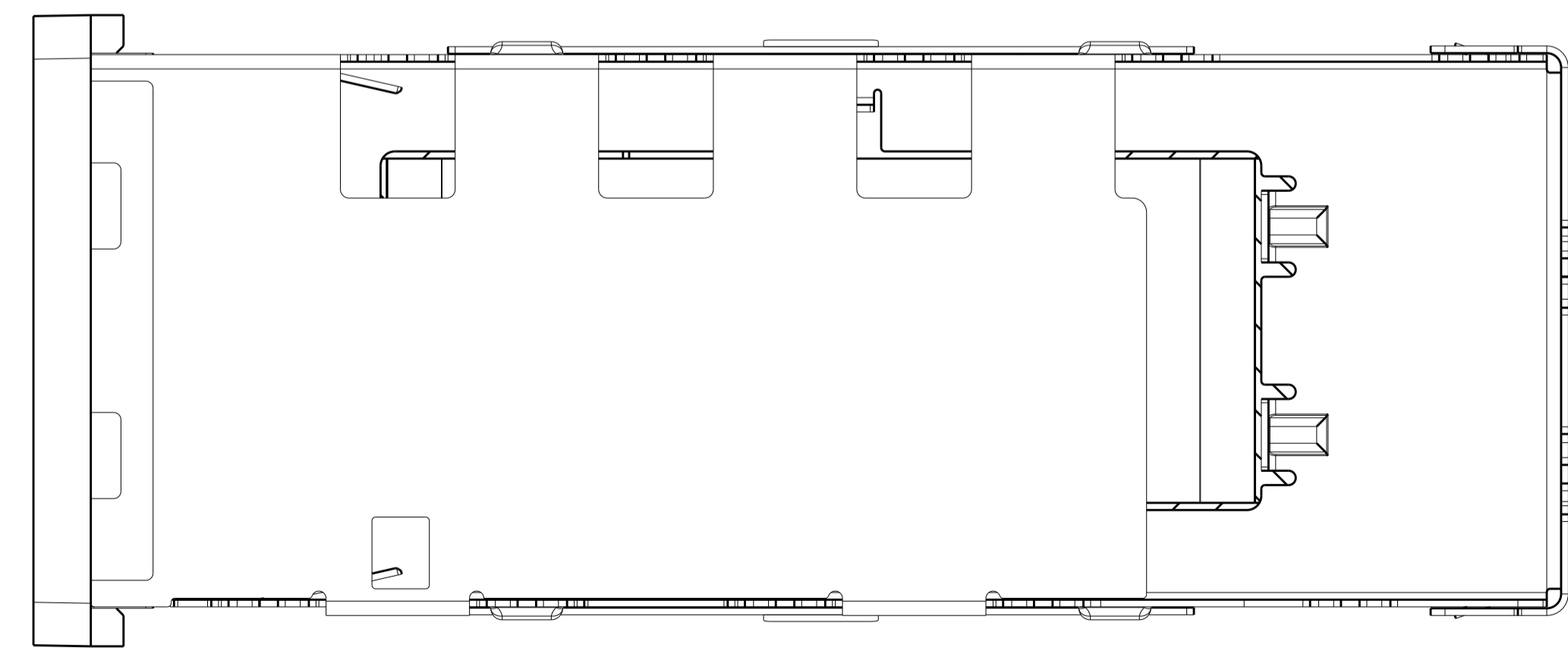
LOC	DIST	REVISIONS					
GP	00	P	LTN	DESCRIPTION	DATE	DWN	APVD
		I		PRELIMINARY	23AUG2012	DZ	JY



- ⚠ CAGE MATERIAL: NICKEL SILVER, 0.25 THICK
 HEAT SINK MATERIAL: ALUMINUM
 HEAT SINK CLIP MATERIAL: STAINLESS STEEL
 EMI SPRING MATERIAL: COPPER ALLOY
 FRONT FLANGE MATERIAL: ZINC ALLOY
- ⚠ MINIMUM PITCH DIMENSION.
- 3. MATES WITH QSFP MSA COMPATIBLE TRANSCEIVER.
- ⚠ REFERENCE APPLICATION SPEC 114-13218 FOR RECOMMENDED DRILL HOLE DIAMETER AND PLATING THICKNESS.
- ⚠ DATUMS AND BASIC DIMENSIONS ESTABLISHED BY CUSTOMER.
- ⚠ DIMENSION C IS THE NOMINAL THICKNESS OF CUSTOMER SUPPLIED PC BOARD, SINGLE SIDED PC BOARD MINIMUM THICKNESS: 1.45
- ⚠ HEAT SINK AND CLIP SHIPPED ASSEMBLED TO CAGE ASSEMBLY. CAGE ASSEMBLY MAY BE PRESSED INTO THE PCB AS SHIPPED.
- ⚠ DATUM -A- IS TOP SURFACE OF HOST BOARD.
- ⚠ SURFACE TRACES PERMITTED WITHIN THIS AREA EXCEPT WHERE CAGE STANDOFFS, SHOWN IN DETAIL J, CONTACT PC BOARD.
- ⚠ DIMENSION APPLIES WITH MODULE INSTALLED IN THE CAGE.
- ⚠ DATE CODE (YYWW) MARKED ON TOP OF CAGE AND CONCEALED BY HEAT SINK APPLIES TO CAGE ASSEMBLY ONLY.
- ⚠ EMI SPRING FINISH: 2µm MIN TIN.
 FRONT FLANGE FINISH: 3µm MIN TIN OVER 1.27µm MIN NICKEL OVER 5.08µm MIN COPPER.
 HEAT SINK FINISH: 0.076µm MIN NICKEL.
- 13. PRODUCT HAS NOT COMPLETED QUALIFICATION TESTING.



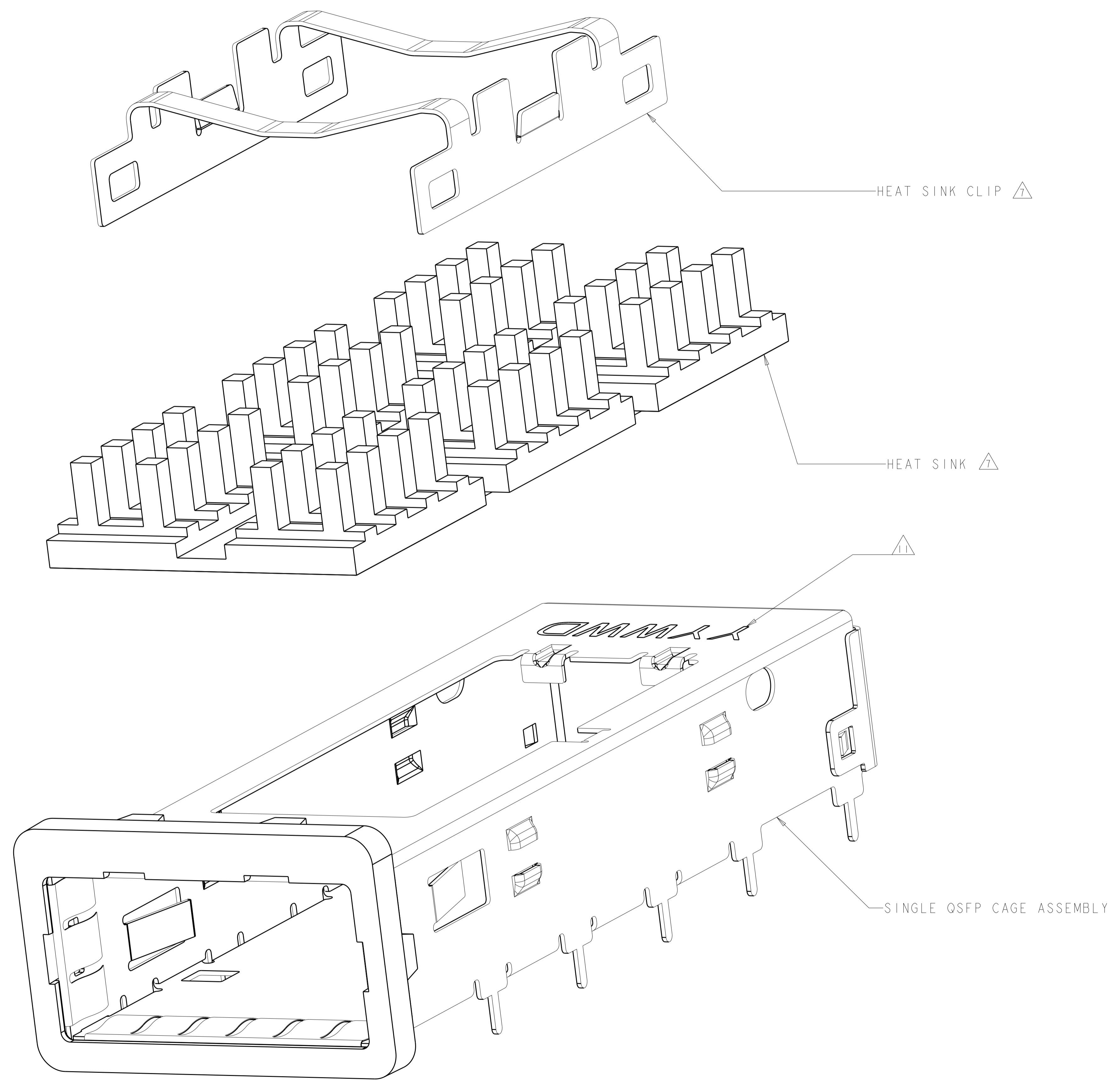
DETAIL J
 SCALE 20:1



DESIGN APPROVED THIS PRINT IS
PRELIMINARY
 TO FIRST PIECE APPROVAL
 CONTACT PRODUCT ENGINEERING
 BEFORE USING THIS PRINT

THIS DRAWING IS A CONTROLLED DOCUMENT.		DWN: D. ZHU 23AUG2012	13.7 PCI HEAT SINK		2170395-1
DIMENSIONS: mm		CHK: J. YANG 23AUG2012	DESCRIPTION		PART NUMBER
TOLERANCES UNLESS OTHERWISE SPECIFIED:		APVD: A. CAI 23AUG2012	CAGE ASSEMBLY, BEHIND BEZEL, QSFP WITH HEAT SINK		
0 PLC ±0.5	1 PLC ±0.13	PRODUCT SPEC 108-2286	SIZE: A1		CAGE CODE: 00779
2 PLC ±0.13	3 PLC ±0.013	APPLICATION SPEC 114-13218	DRAWING NO: C=2170395		RESTRICTED TO: -
4 PLC ±0.0001	ANGLES ±0.0001	WEIGHT: -	Customer Drawing		SCALE: 2:1
MATERIAL: -		FINISH: -		SHEET 1 OF 4	

LOC	DIST	REVISIONS			
P	LTN	DESCRIPTION	DATE	DMN	APVD
GP	00	SEE SHEET 1	-	-	-

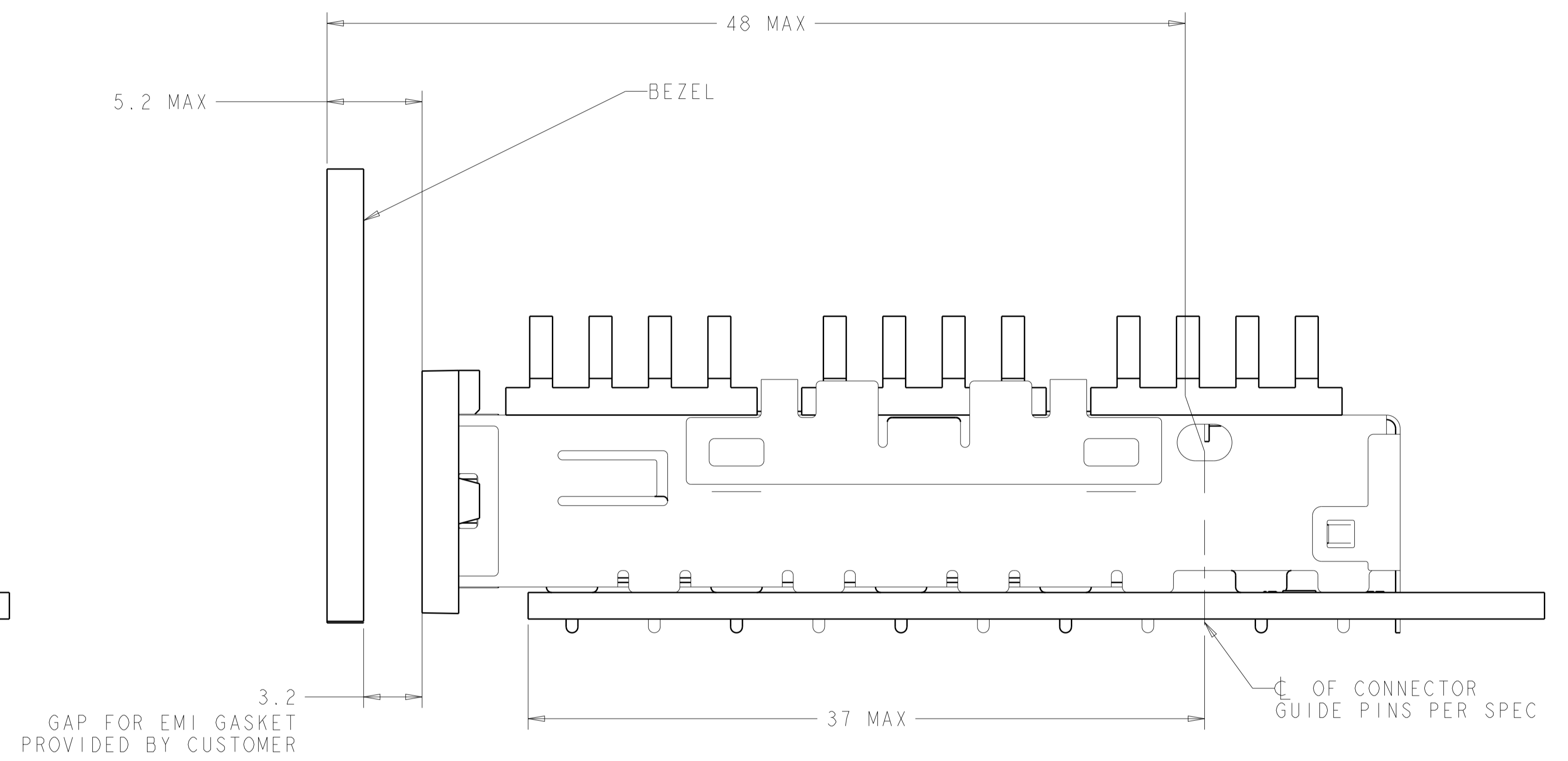
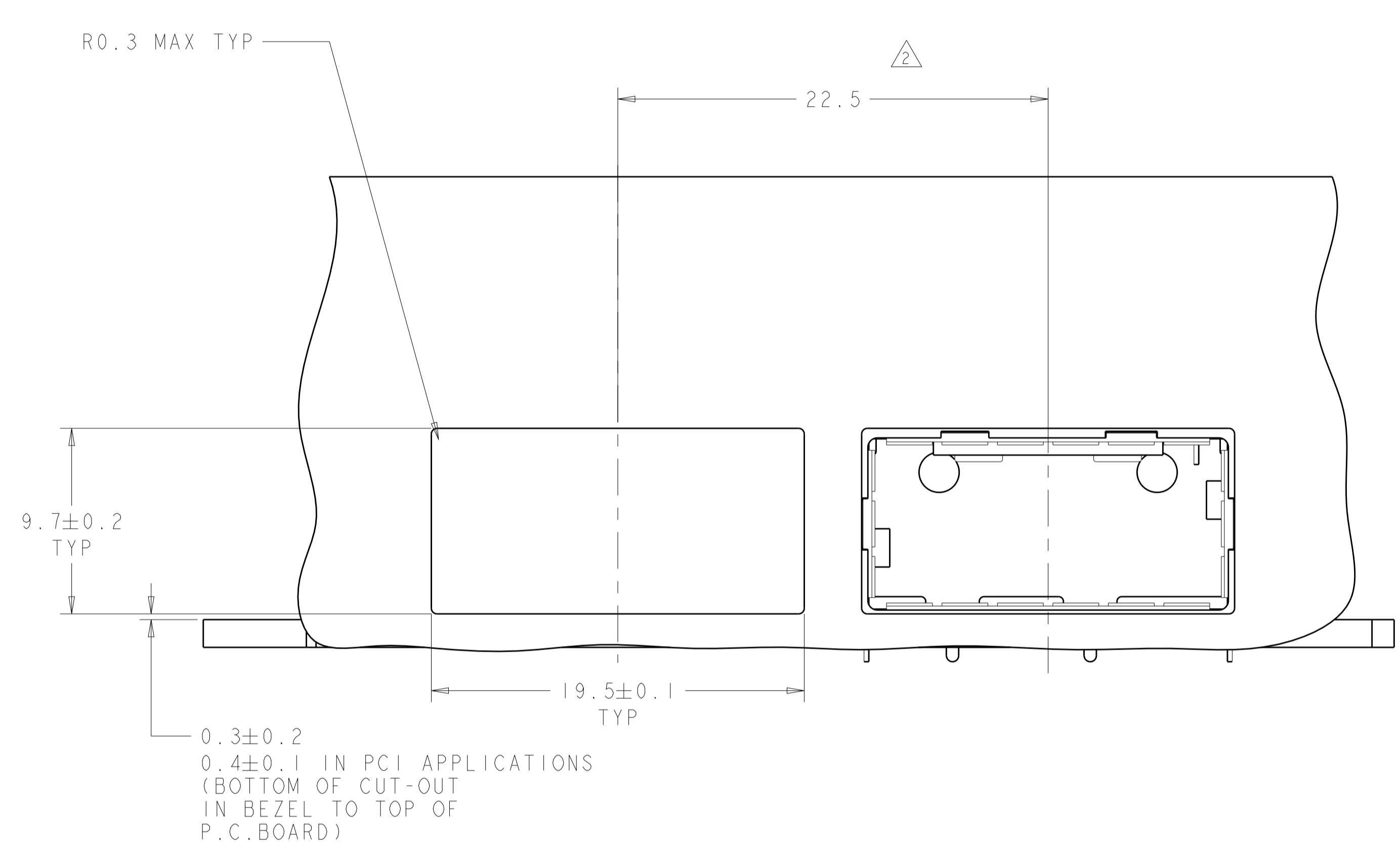


EXPLODED VIEW
SCALE 8:1

DESIGN APPROVED THIS PRINT IS
PRELIMINARY
 TO FIRST PIECE APPROVAL
 CONTACT PRODUCT ENGINEERING
 BEFORE USING THIS PRINT

THIS DRAWING IS A CONTROLLED DOCUMENT.		DMN D. ZHU 23AUG2012	TE Connectivity
DIMENSIONS: mm		CHK J. YANG 23AUG2012	
		APVD A. CAI 23AUG2012	NAME CAGE ASSEMBLY, BEHIND BEZEL, QSPF, WITH HEAT SINK
TOLERANCES UNLESS OTHERWISE SPECIFIED:		PRODUCT SPEC 108-2286	SIZE A100779C=2170395
0 PLC ±.5 2 PLC ±0.13 3 PLC ±0.013 4 PLC ±0.001 ANGLES ±.1		APPLICATION SPEC 114-13218	RESTRICTED TO
MATERIAL		WEIGHT	Customer Drawing
FINISH		SCALE 2:1	SHEET 2 OF 4

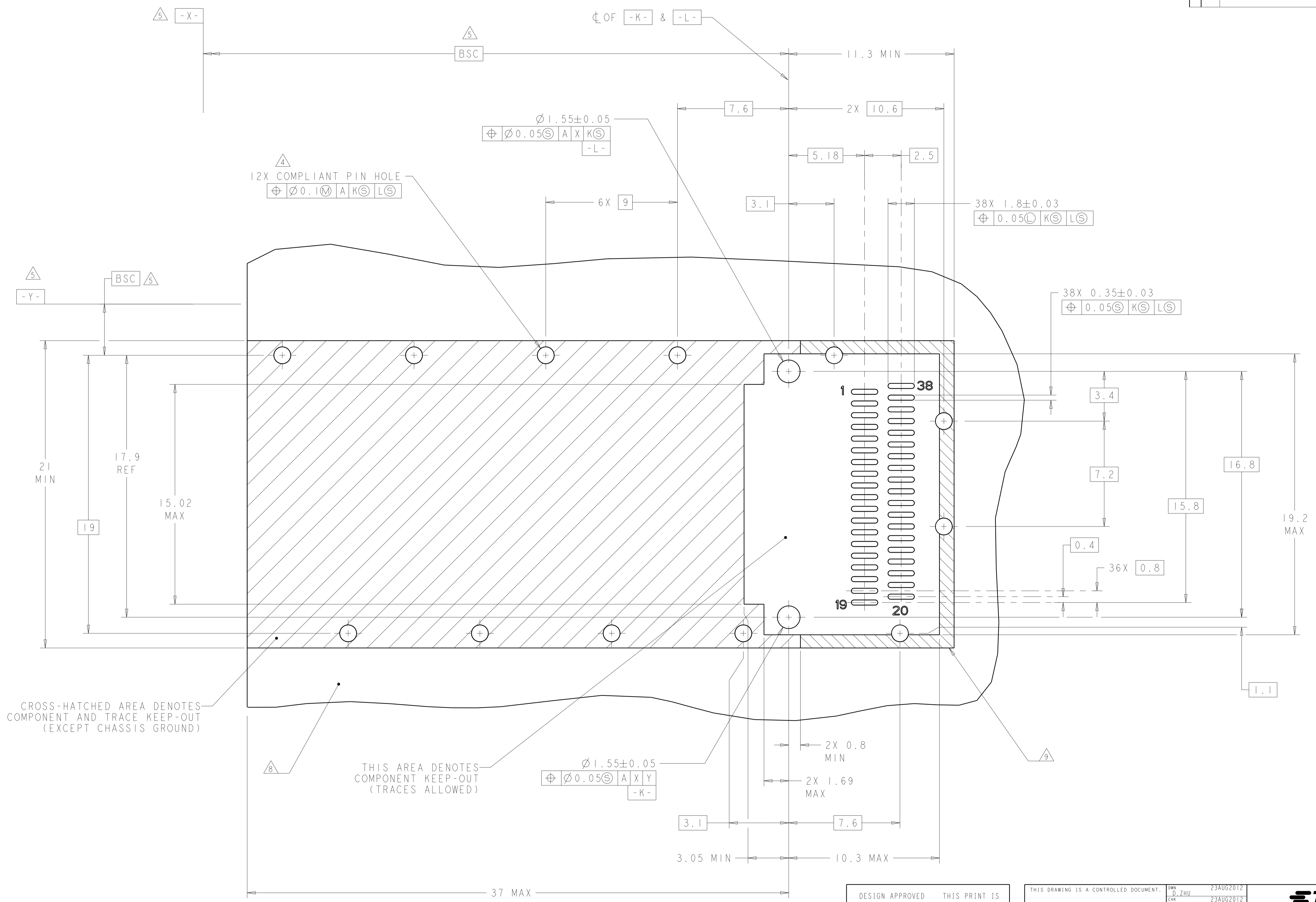
LOC	DIST	REVISIONS					
GP	00	P.	LTN	DESCRIPTION	DATE	DWN	APVD
-	-	-	-	SEE SHEET 1	-	-	-



DESIGN APPROVED THIS PRINT IS
PRELIMINARY
 TO FIRST PIECE APPROVAL
 CONTACT PRODUCT ENGINEERING
 BEFORE USING THIS PRINT

THIS DRAWING IS A CONTROLLED DOCUMENT.		DWN D. ZHU	23AUG2012	STE TE Connectivity
DIMENSIONS: mm		CHK J. YANG	23AUG2012	
TOLERANCES UNLESS OTHERWISE SPECIFIED:		APVD A. CAI	23AUG2012	NAME CAGE ASSEMBLY, BEHIND BEZEL, QSFP, WITH HEAT SINK
0 PLC ±0.5	1 PLC ±0.13	PRODUCT SPEC	108-2286	SIZE A1
2 PLC ±0.013	3 PLC ±0.001	APPLICATION SPEC	114-13218	CAGE CODE 2170395
4 PLC ±0.0001	ANGLES ±	WEIGHT	-	RESTRICTED TO
MATERIAL	FINISH	Customer Drawing	SCALE 2:1	SHEET 3 OF 4

LOC	DIST	REVISIONS					
		P	LTN	DESCRIPTION	DATE	DWN	APVD
GP	00	-	-	SEE SHEET 1	-	-	-



CROSS-HATCHED AREA DENOTES COMPONENT AND TRACE KEEP-OUT (EXCEPT CHASSIS GROUND)

THIS AREA DENOTES COMPONENT KEEP-OUT (TRACES ALLOWED)

Ø1.55±0.05
 ⊕ Ø0.05Ⓢ | A X Y
 -K-

RECOMMENDED PCB LAYOUT
 SINGLE SIDED CONFIGURATION
 SCALE 8:1

DESIGN APPROVED THIS PRINT IS
PRELIMINARY
 TO FIRST PIECE APPROVAL
 CONTACT PRODUCT ENGINEERING
 BEFORE USING THIS PRINT

THIS DRAWING IS A CONTROLLED DOCUMENT.		DWN D. ZHU 23AUG2012	23AUG2012	TE Connectivity
DIMENSIONS: mm		CHK J. YANG 23AUG2012	23AUG2012	
TOLERANCES UNLESS OTHERWISE SPECIFIED:		APVD A. CAI 23AUG2012		NAME CAGE ASSEMBLY, BEHIND BEZEL, QSFP, WITH HEAT SINK
0 PLC ±0.5	1 PLC ±0.13	PRODUCT SPEC	108-2286	RESTRICTED TO
2 PLC ±0.013	3 PLC ±0.013	APPLICATION SPEC	114-13218	SIZE A1
4 PLC ±0.0001	ANGLES ±0.0001	WEIGHT	114-13218	CAGE CODE 2170395
MATERIAL	FINISH	Customer Drawing	SCALE 2:1	SHEET 4 OF 4

X-ON Electronics

Largest Supplier of Electrical and Electronic Components

Click to view similar products for [I/O Connectors](#) category:

Click to view products by [TE Connectivity](#) manufacturer:

Other Similar products are found below :

[571763P](#) [72.250.1628.2](#) [72.250.2428.2](#) [74720-0505](#) [76.350.0729.0](#) [76871-1403](#) [FCN-244F080-G/1](#) [FCN-260A9920](#) [MP-5T180MUNNA-005](#)
[PCR-E36PM](#) [PCS-XE26MA+](#) [G38A71314B](#) [1571250010](#) [157-22500-3](#) [MS3471L14-19P L/C](#) [91-569786-35H](#) [172501-4002](#) [172501-6002](#)
[FCN-260C008-A/L0](#) [FCN-260C024-AL0](#) [FCN-261Z008](#) [2000314-1](#) [200331-1](#) [PCR-E36FC+](#) [PCS-E28FS+](#) [PCS-XE26SLFD+](#) [PCS-](#)
[XE26SLFDT+](#) [G730VID08BDC24](#) [U90B2054081210](#) [UE86K842720321](#) [38113800006](#) [DP3AR020WQ1R200](#) [Z4.102.0680.0](#) [500-1040](#)
[500-1052](#) [500-1054](#) [ZP-4008-66L](#) [0709821002](#) [10-565995-597N](#) [DX40-20P\(55\)](#) [5554841-1](#) [MS3474W18-8P-LC*](#) [U90B3054061110](#) [U65-](#)
[E04-4020](#) [ZPF000000000097891](#) [557-262M2-06C](#) [747360449](#) [10099439-003C-TRLF](#) [10137239-0021LF](#) [E9320-001-01](#)