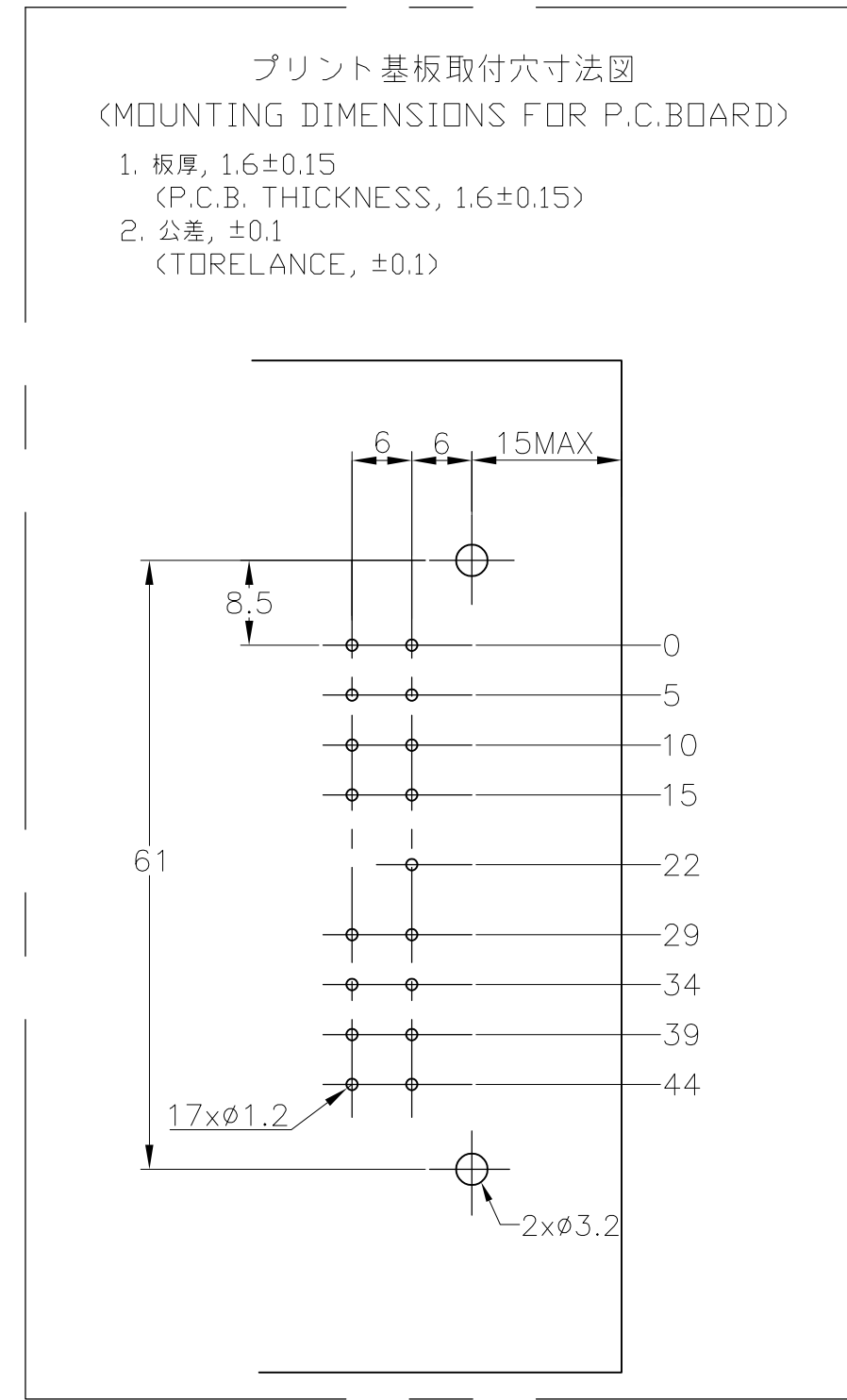
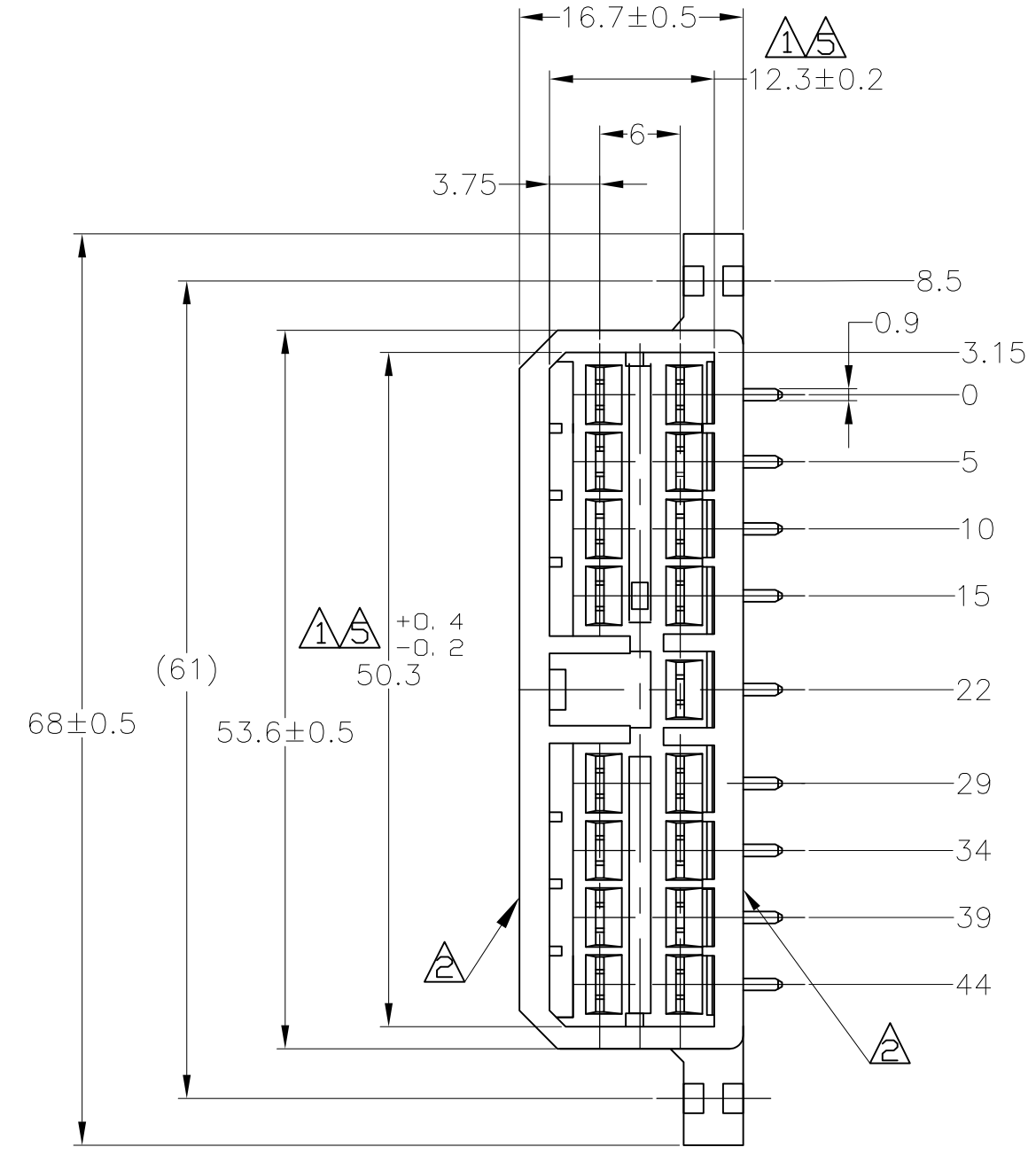
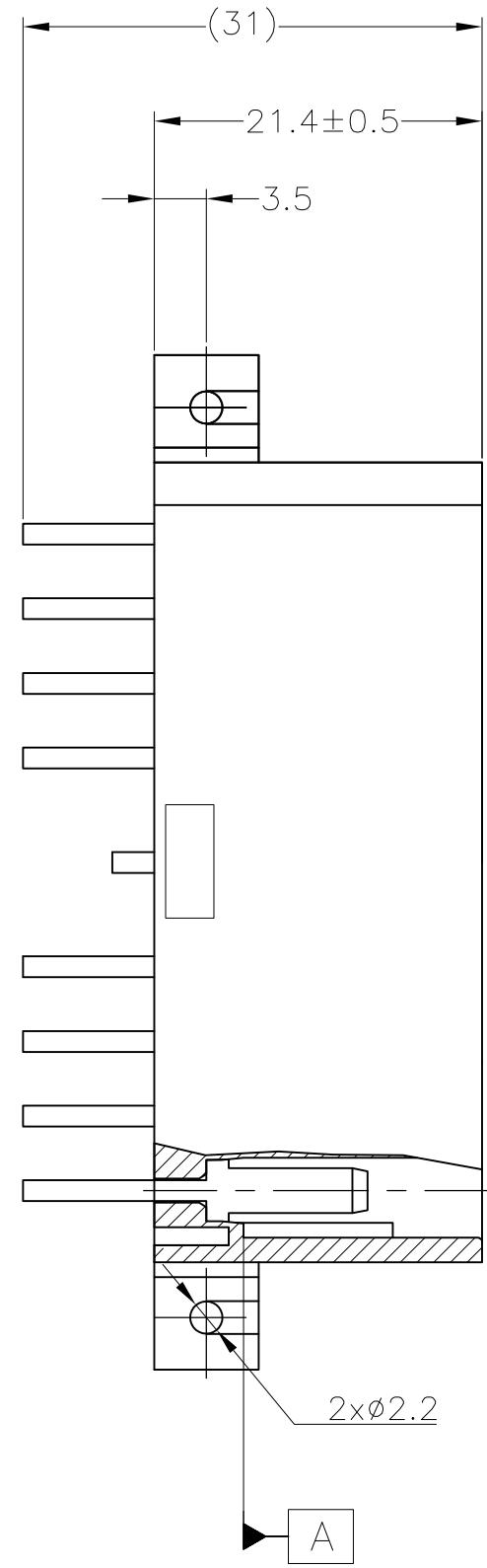
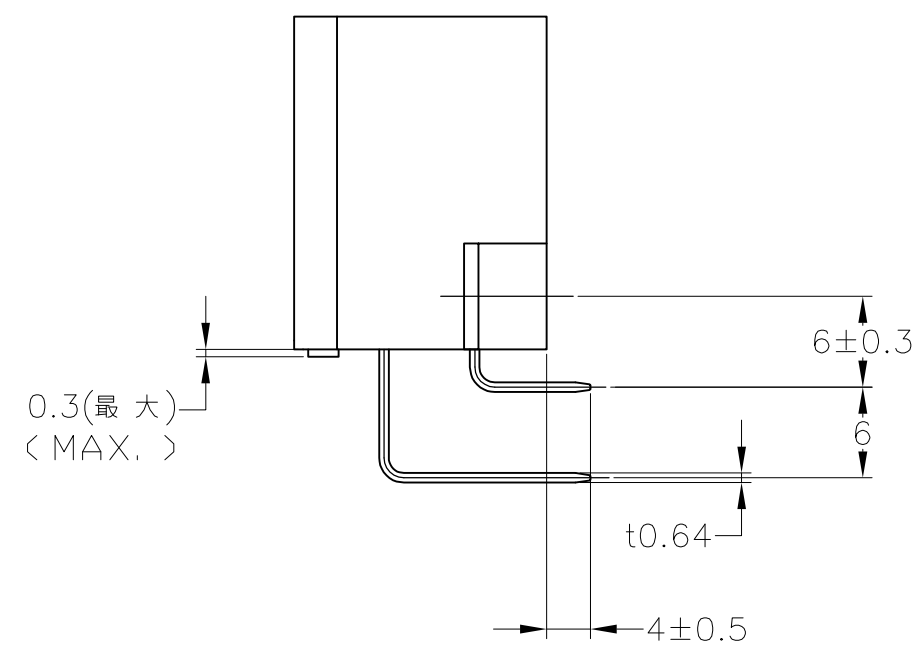


REVISIONS					
P	LTR	DESCRIPTION	DATE	DWN	APVD
F6	REVISED	変更 ECR-16-002841	18MAY2017	KF	TK



- 注記:
- ① 相手ハウジングと所定の機能を満たしてかん合できること。
 - ② フードの反りは0.2以内。
 - ③ プリント基板への取付けは JIS B1115 M3 1種の
タッピンネジで締め付けた後はんだ付けする。
 - ④ 適用製品規格: 108-5093
 - ⑤ [A] 面より2mmの範囲で測定のこと。
 - ⑥ 相手ハウジングとのかん合力は、29.4N以下
但し、リセプタクルコンタクトは含まない。



- NOTE:
- ① IN COUPLING WITH THE PLUG HOUSING MATING SATISFIES FUNCTION
 - ② WARPAGE 0.2 MAX.
 - ③ SOLDERING AFTER MOUNTING P. C. BOARD BY 3mmDIA TAPPING SCREW,
SPECIFIED IN JIS B1115
 - ④ PRODUCT SPEC NO. 108-5093
 - ⑤ TO BE MEASURED WITHIN 2mm FROM [A]
 - ⑥ IN COUPLING WITH THE PLUG HOUSING MATING FORCE 29.4N MAX.
WITHOUT RECEPTACLE CONTACT

SELECTIVE-TIN (MATTE)	SELECTIVE GOLD (0.38μm MIN.)	NATURAL	2-5171366-1
SELECTIVE-TIN (MATTE)	SELECTIVE GOLD (0.76μm MIN.)	NATURAL	1-5171366-1
TIN-LEAD	SELECTIVE GOLD (0.38μm MIN.)	GREEN	2-171366-4
TIN-LEAD	SELECTIVE GOLD (0.38μm MIN.)	NATURAL	2-171366-1
PRE-TIN	PRE-TIN BRASS	GRAY	171366-6
	PRE-TIN	GREEN	171366-4
	PRE-TIN	BROWN	171366-3
	PRE-TIN	BLACK	171366-2
	PRE-TIN	NATURAL	171366-1
SOLDERING SIDE 半田付け部	CONTACT SIDE 接触部側	COLOR 色	PART NUMBER 製品型番
CONTACT FINISH コンタクト仕上			

TOLERANCE UNLESS OTHERWISE SPECIFIED: 一般公差

0 <= X <= 10 : ±0.2
 10 <= X <= 30 : ±0.25
 30 <= X <= 100 : ±0.3
 ANGLE : ±3°

THIS DRAWING IS A CONTROLLED DOCUMENT.

DIMENSIONS: 単位: 0.1mm mm

TOLERANCES UNLESS OTHERWISE SPECIFIED: 一般公差

0 PLC ±
 1 PLC ±
 2 PLC ±
 3 PLC ±
 4 PLC ±
 ANGLES ±

MATERIAL 材料: HSG: 66 NYLON CONTACT: BRASS

FINISH 仕上: -

WEIGHT: -

CUSTOMER DRAWING

DWN: T.SHINOHARA 31AUG07
 CHK: K.BETSUI 31AUG07
 APVD: K.BETSUI 31AUG07
 PRODUCT SPEC: 製品規格
 APPLICATION SPEC: 取付適用規格

SEE NOTE 4

TE Connectivity

17POSITION H TYPE CAP HOUSING
MULTI-INTERLOCK CONNECTOR
WIRE TO PCB

SIZE: A2 CAGE CODE: 00779 DRAWING NO: 171366 RESTRICTED TO: -

SCALE: 2:1 SHEET: 1 OF 1 REV: F6

X-ON Electronics

Largest Supplier of Electrical and Electronic Components

Click to view similar products for [Automotive Connectors](#) category:

Click to view products by [TE Connectivity](#) manufacturer:

Other Similar products are found below :

[003-018-000](#) [600858](#) [60403001](#) [60993906-B](#) [60993913-B](#) [629515004020001](#) [M83723/71R1808N L/C](#) [M902-2131](#) [M902-2161](#) [M902-2344](#)
[72.330.1035.1](#) [73.353.4028.0](#) [F118010](#) [F119300-B](#) [F132210](#) [F166900](#) [F180100](#) [F258300](#) [F258300-B](#) [F294300-B](#) [F339100](#) [F339700](#)
[F358300-B](#) [F374110](#) [F407400](#) [F412210](#) [F444110](#) [F487000](#) [F495100](#) [F500900-B](#) [F509500B-B](#) [770444-1](#) [827153-1](#) [881735-1](#)
[8N1515-32-24P](#) [9-1326729-8](#) [925467-1](#) [925474-1](#) [928905-1](#) [936398-2](#) [964562-4](#) [964731-2](#) [968782-1](#) [GT17SA-8DS-HU](#) [GT17VS-10DP-](#)
[5.2CF](#) [98315-0001](#) [98315-0010](#) [98891-1012](#) [98895-2014](#) [98936-1039](#)