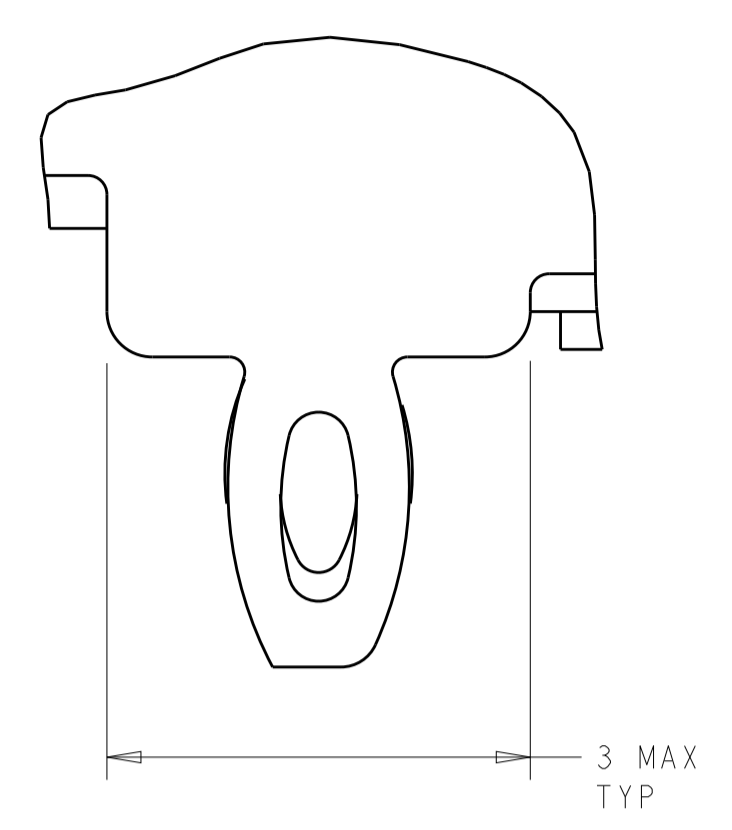
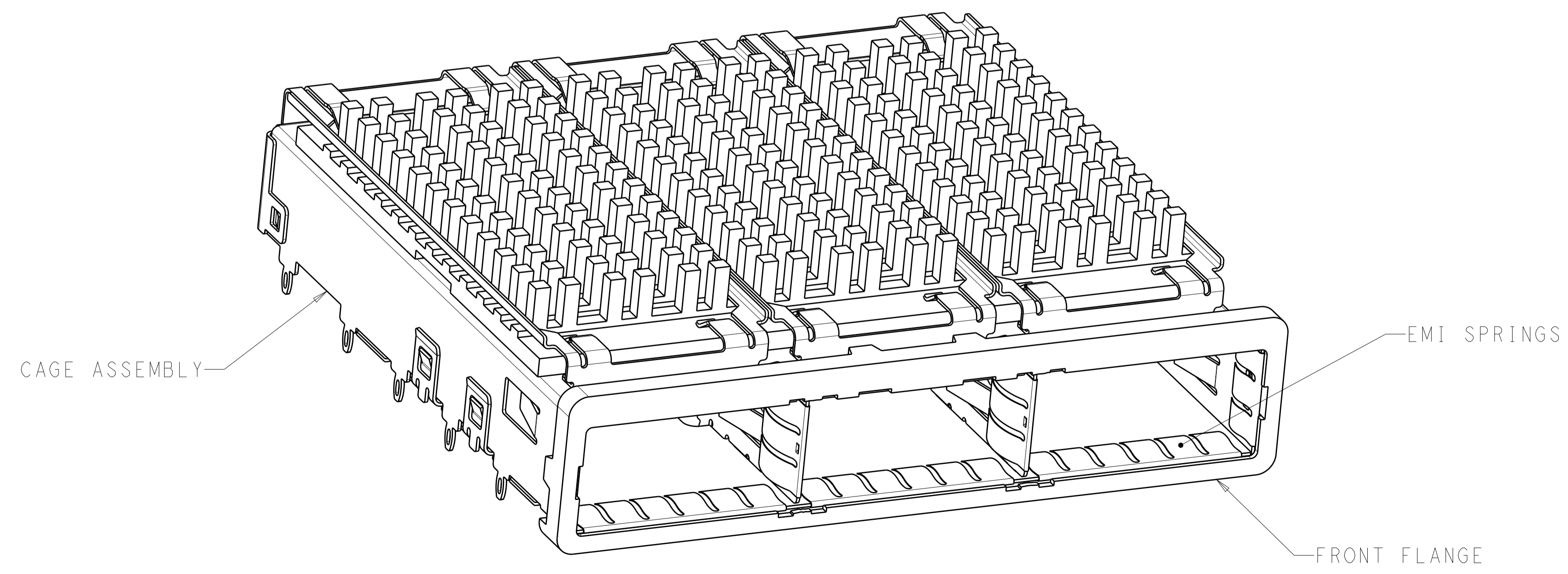
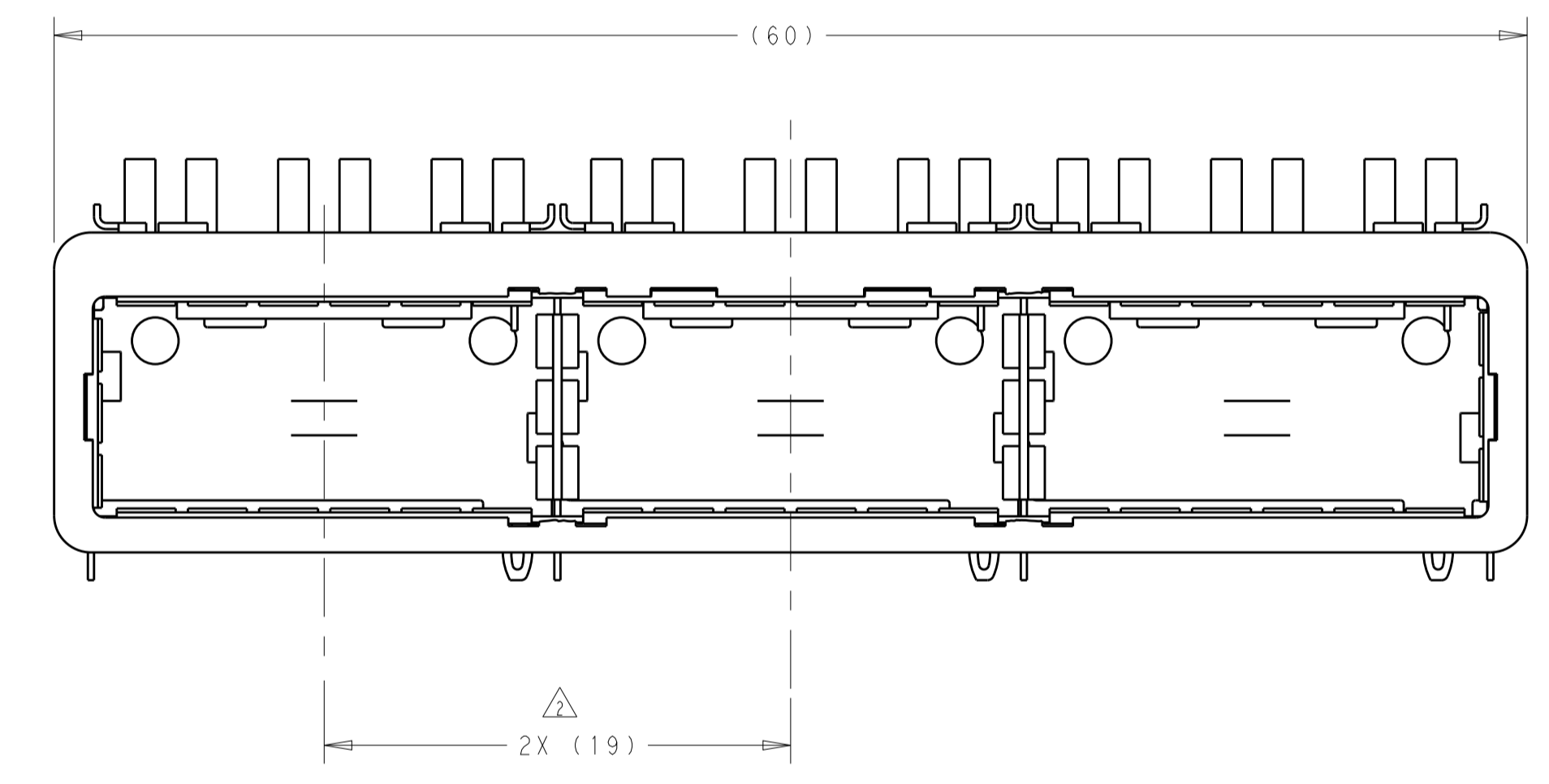
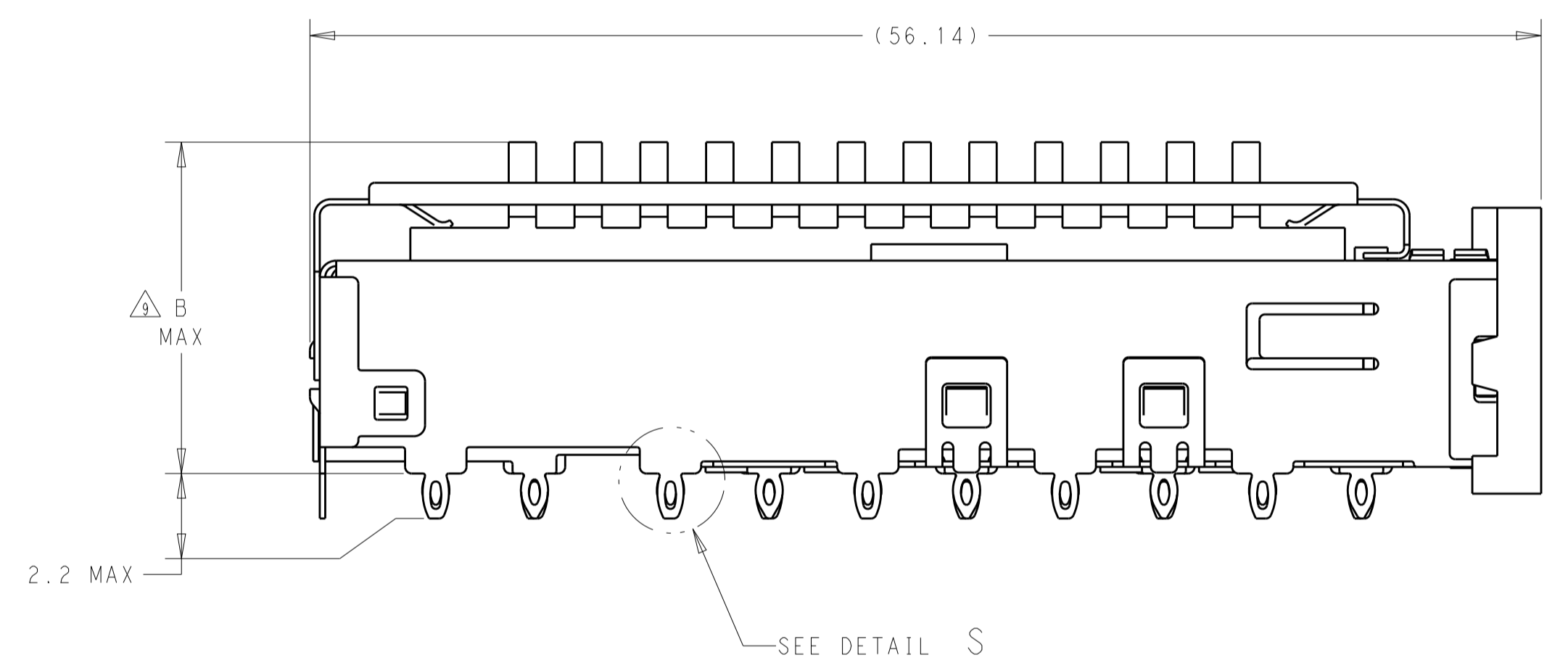


LOC		DIST		REVISIONS			
GP	00	P	LTN	DESCRIPTION	DATE	DMN	APVD
		A		RELEASED PER ECO-13-000076	16JAN2013	CJV	EDB



DETAIL S $\Delta 12$
 SCALE 20:1

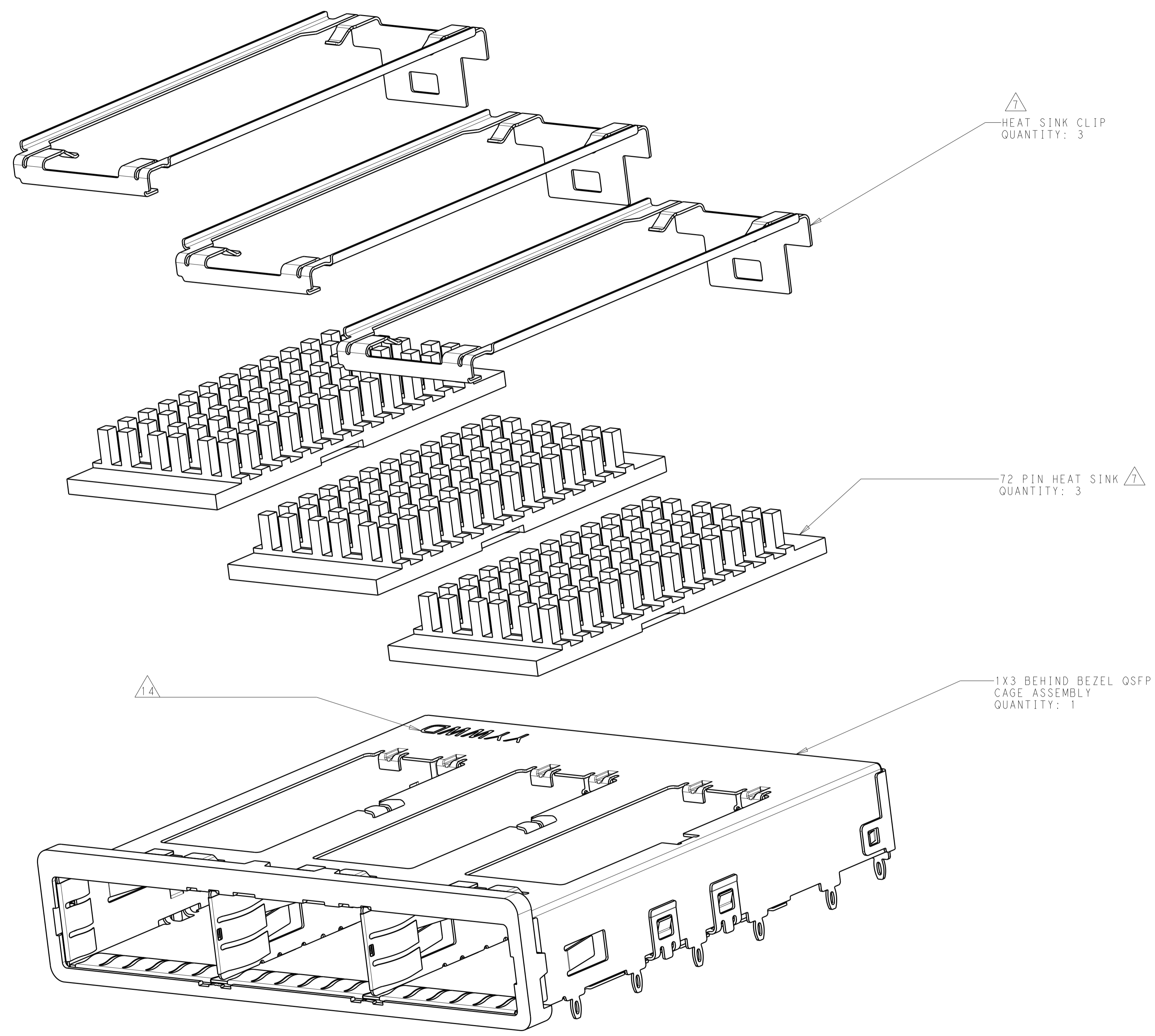
- Δ MATERIALS:
 CAGE ASSEMBLY: NICKEL SILVER, 0.25 THICK
 EMI SPRINGS: COPPER ALLOY
 FRONT FLANGE: ZINC ALLOY
 HEAT SINK: ALUMINUM
 HEAT SINK CLIP: STAINLESS STEEL
- Δ PITCH BETWEEN PORTS OF ONE 1X3 CAGE ASSEMBLY.
- Δ SPACING BETWEEN CAGES ON THE SAME PC BOARD, TO BE SPECIFIED BY CUSTOMER, MUST COMPLY WITH MINIMUM DIMENSIONS SHOWN.
- Δ REFERENCE APPLICATION SPEC 114-XXXX FOR RECOMMENDED DRILL HOLE DIAMETER AND PLATING THICKNESS.
- Δ DATUMS AND BASIC DIMENSIONS ESTABLISHED BY CUSTOMER.
- Δ DIMENSION C IS THE NOMINAL THICKNESS OF CUSTOMER SUPPLIED PC BOARD.
 MINIMUM SINGLE SIDED PC BOARD THICKNESS: 1.45mm
 MINIMUM DOUBLE SIDED PC BOARD THICKNESS: 2.2mm PER QSFP
- Δ HEAT SINKS AND CLIPS SHIPPED ASSEMBLED TO CAGE ASSEMBLY.
 CAGE ASSEMBLY MAY BE PRESSED INTO THE PCB AS SHIPPED.
- Δ DATUM A IS TOP SURFACE OF PC BOARD.
- Δ DIMENSION APPLIES WITH MODULE INSERTED IN CAGE.
- Δ UNPLATED THRU HOLE.
- Δ MATES WITH QSFP MSA COMPATIBLE TRANSCEIVER.
- Δ SURFACE TRACES PERMITTED WITHIN THIS AREA EXCEPT WHERE CAGE STANDOFFS, SHOWN IN DETAIL S, CONTACT PC BOARD.
- Δ BASELINE FOR THESE DIMENSIONS IS THE CENTER OF COMPLIANT PIN HOLE.
- Δ DATE CODE (YYWW) MARKED ON TOP OF CAGE AND CONCEALED BY HEAT SINKS APPLIES TO CAGE ASSEMBLY ONLY.
- Δ REFERENCE APP SPEC 114-XXXX FOR GASKET THICKNESS CALCULATION.
- Δ FINISH:
 EMI SPRINGS: 2 μ m MINIMUM TIN
 FRONT FLANGE: 3 μ m MINIMUM TIN OVER 1.27 μ m MINIMUM NICKEL OVER 5.08 μ m MINIMUM COPPER
 HEAT SINK: NICKEL.



23.0	NETWORKING	2173239-3
16.0	SAN	2173239-2
13.7	PCI	2173239-1
B	HEAT SINK PROFILE	PART NUMBER

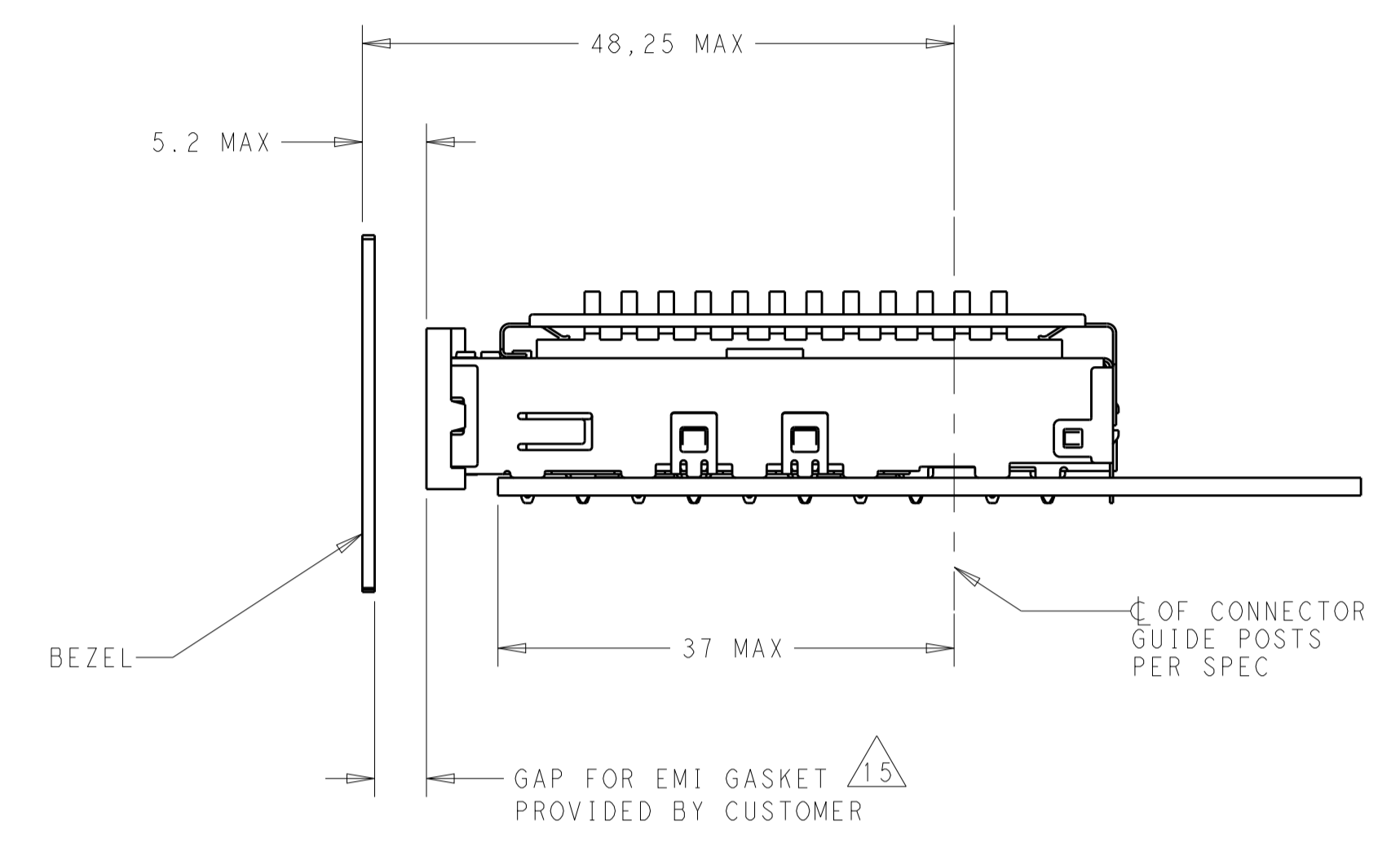
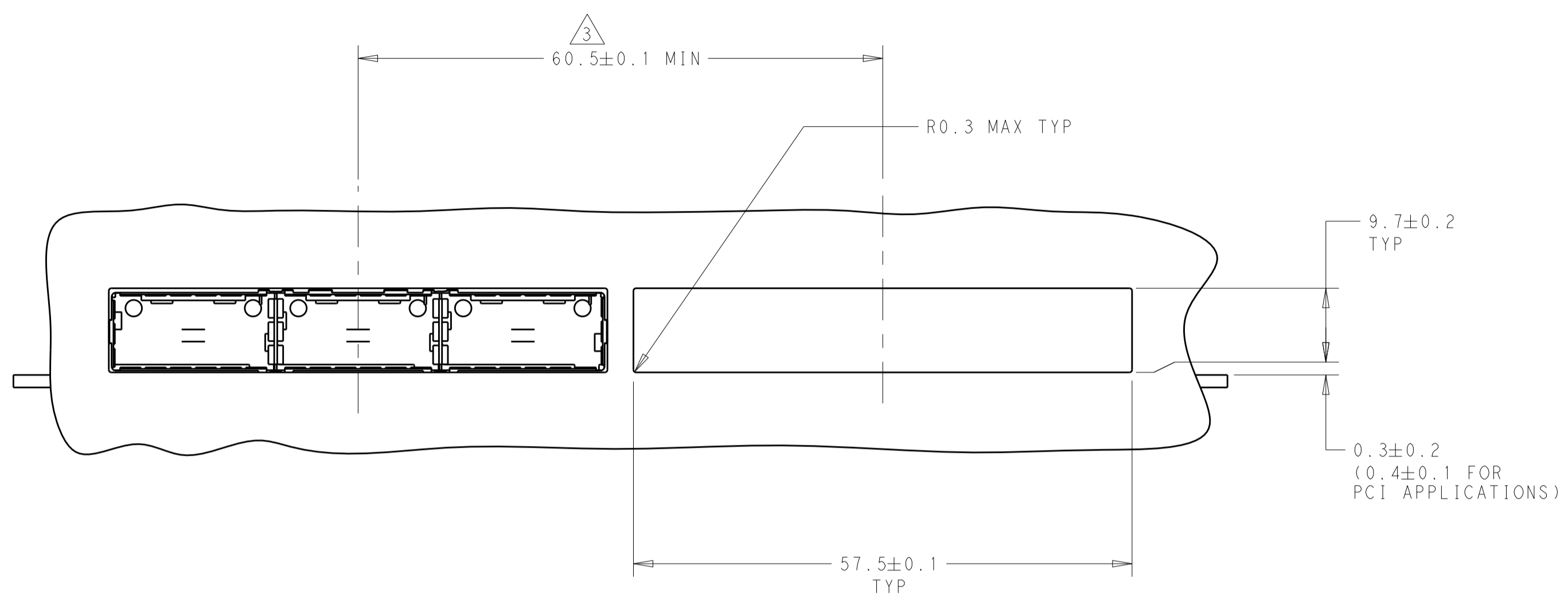
THIS DRAWING IS A CONTROLLED DOCUMENT. DIMENSIONING AND TOLERANCING PER ASME Y14.5M-2009.		DMN: J.V.D. HEIJDEN 12AUG2011 CHK: R. VERBEET 12AUG2011 APVD: T.D. ROER 15AUG2011	TE Connectivity NAME: 1X3 CAGE ASSEMBLY, BEHIND BEZEL, W/ HEAT SINKS, 2QSFP+ SIZE: CAGE CODE DRAWING NO: A100779C=2173239 RESTRICTED TO: - WEIGHT: - CUSTOMER DRAWING	
DIMENSIONS:	TOLERANCES UNLESS OTHERWISE SPECIFIED:	PRODUCT SPEC: 108-XXXX	APPLICATION SPEC: 114-XXXX	SCALE: 1:1
mm	0 PLC \pm 1 PLC ± 0.1 2 PLC ± 0.1 3 PLC ± 0.013 4 PLC ± 0.0001 ANGLES \pm	SHEET 1 OF 5 REV A		

LOC	DIST	REVISIONS			
P	LTN	DESCRIPTION	DATE	DWN	APVD
GP	00	SEE SHEET 1	-	-	-

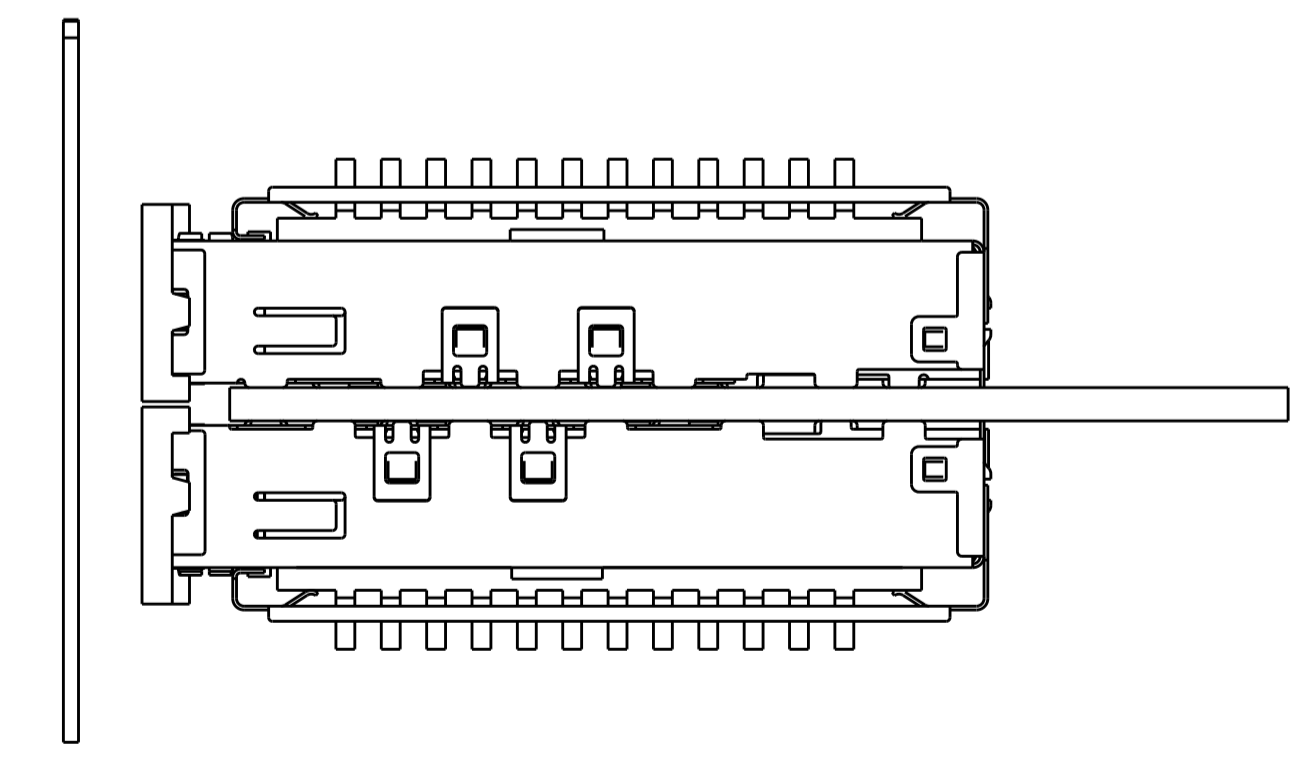
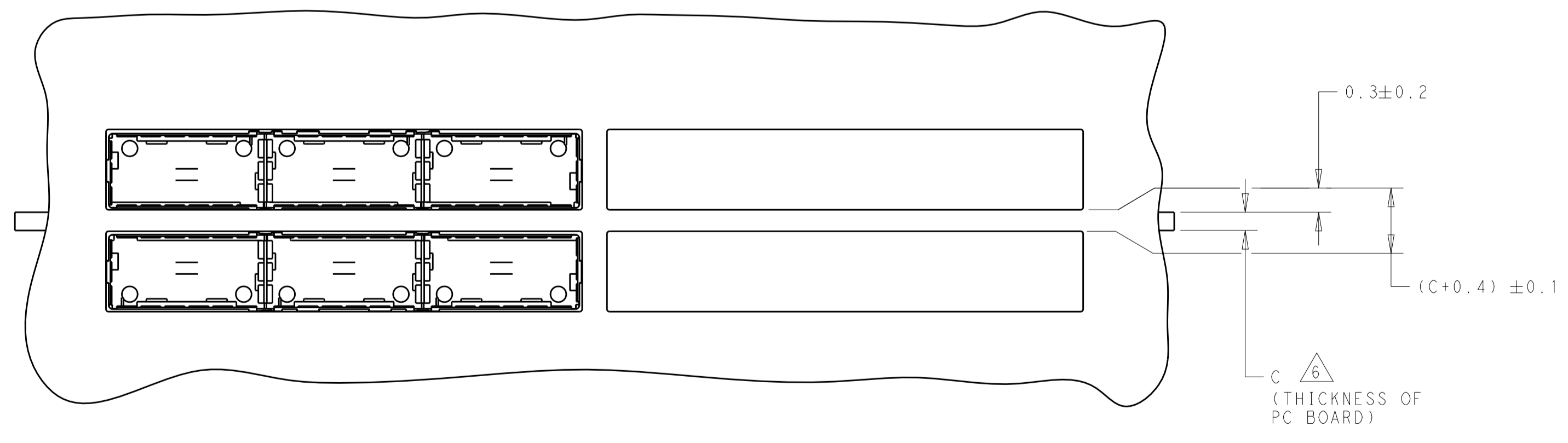


THIS DRAWING IS A CONTROLLED DOCUMENT. DIMENSIONING AND TOLERANCING PER ASME Y14.5M-2009.		DWN J.V.D. HEIJDEN 12AUG2011	TE Connectivity
TOLERANCES UNLESS OTHERWISE SPECIFIED:		CHK R. VERBEET 12AUG2011	
DIMENSIONS:	mm	APVD T.D. ROER 15AUG2011	NAME 1X3 CAGE ASSEMBLY, BEHIND BEZEL, W/ HEAT SINKS, 2QSFP+
	0 PLC ±	PRODUCT SPEC	SIZE
	1 PLC ±0.1	108----	CAGE CODE
2 PLC ±0.1	APPLICATION SPEC	114----	DRAWING NO
3 PLC ±0.013	WEIGHT	---	A100779
4 PLC ±0.0001	FINISH	---	C=2173239
ANGLES ±	CUSTOMER DRAWING	SCALE	1:1
		SHEET	2
		OF	5
		REV	A

LOC	DIST	REVISIONS			
P	LTN	DESCRIPTION	DATE	DMN	APVD
GP	00	SEE SHEET 1	-	-	-



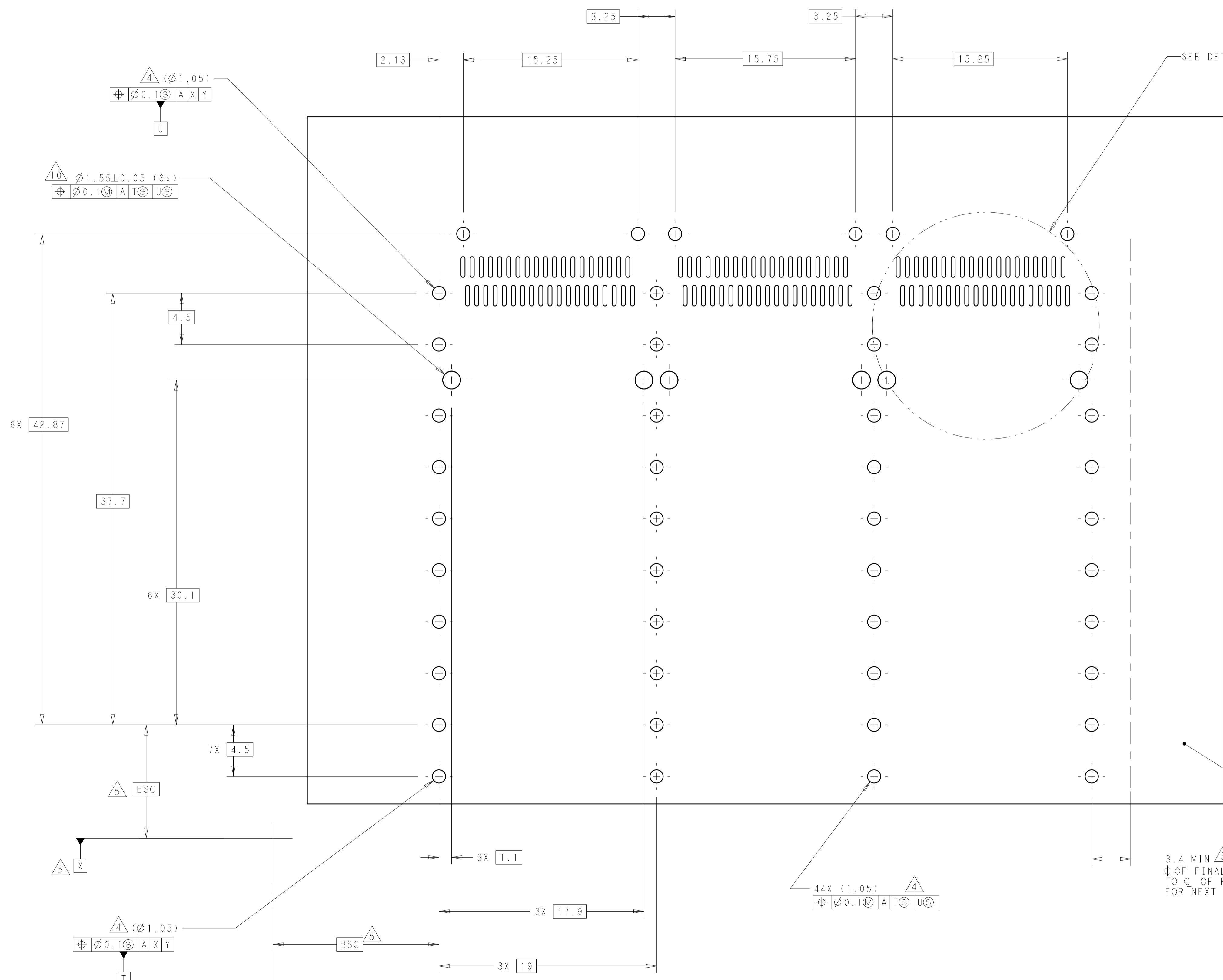
ONE SIDED CONFIGURATION
SCALE 2:1



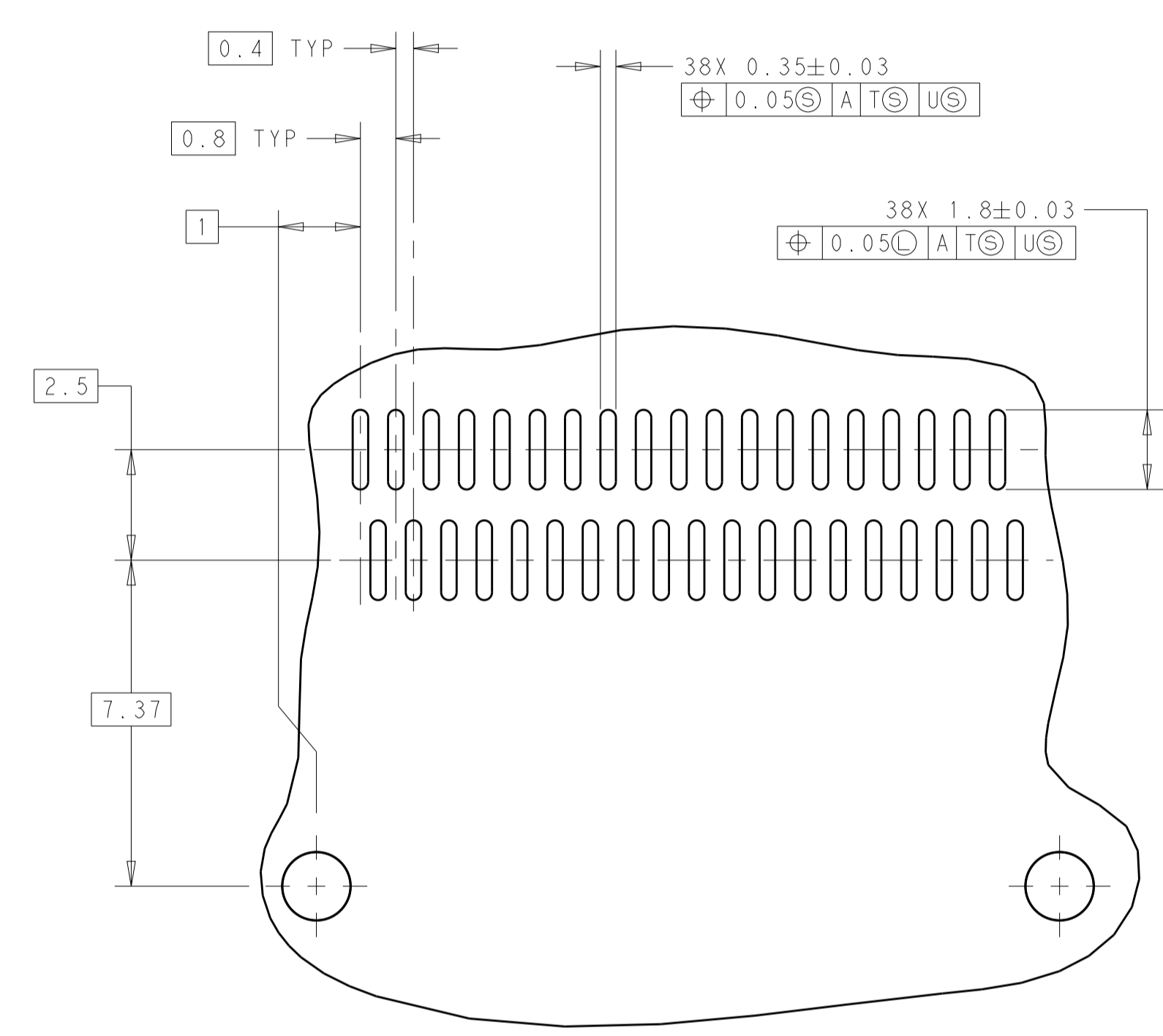
BELLY TO BELLY CONFIGURATION SIMILAR
TO ONE SIDED EXCEPT WHERE NOTED
SCALE 2:1

THIS DRAWING IS A CONTROLLED DOCUMENT. DIMENSIONING AND TOLERANCING PER ASME Y14.5M-2009		DMN J.V.D. HEIJDEN 12AUG2011	TE Connectivity
DIMENSIONS: mm		CHK R. VERBEEF 12AUG2011	
TOLERANCES UNLESS OTHERWISE SPECIFIED:		APVD T.D. ROER 15AUG2011	NAME 1X3 CAGE ASSEMBLY, BEHIND BEZEL, W/ HEAT SINKS, 2QSFP+
0 PLC ±	1 PLC ±0.1	PRODUCT SPEC	SIZE CAGE CODE DRAWING NO
2 PLC ±0.1	3 PLC ±0.013	108----	A100779C=2173239
4 PLC ±0.0001	ANGLES ±	APPLICATION SPEC	RESTRICTED TO
MATERIAL FINISH	114----	WEIGHT	SCALE 4:1 SHEET 3 OF 5 REV A
CUSTOMER DRAWING			

LOC	DIST	REVISIONS			
P	LTN	DESCRIPTION	DATE	DMN	APVD
-	-	SEE SHEET 1	-	-	-



SEE DETAIL K



DETAIL K
 3 PLACES
 SCALE 8:1

RECOMMENDED PC BOARD LAYOUT
 BELLY TO BELLY CONFIGURATION
 SEE SHEET 4 FOR COMPONENT
 AND TRACE KEEP-OUTS
 SCALE 5:1

THIS DRAWING IS A CONTROLLED DOCUMENT. DIMENSIONING AND TOLERANCING PER ASME Y14.5M-2009		DMN: J.V.D. HEIJDEN 12AUG2011 CHK: R. VERBEET 12AUG2011 APVD: T.D. ROER 15AUG2011	TE Connectivity NAME: 1X3 CAGE ASSEMBLY, BEHIND BEZEL, W/ HEAT SINKS, 2QSFP+	
DIMENSIONS: mm	TOLERANCES UNLESS OTHERWISE SPECIFIED:	PRODUCT SPEC	SIZE	CAGE CODE
0 PLC ±0.1	1 PLC ±0.1	108----	A100779	2173239
2 PLC ±0.1	3 PLC ±0.013	APPLICATION SPEC	SCALE	SHEET
4 PLC ±0.0001	ANGLES	114----	1:1	5 OF 5
MATERIAL	FINISH	WEIGHT	CUSTOMER DRAWING	
		RESTRICTED TO		REV A

X-ON Electronics

Largest Supplier of Electrical and Electronic Components

Click to view similar products for [I/O Connectors](#) category:

Click to view products by [TE Connectivity](#) manufacturer:

Other Similar products are found below :

[571763P](#) [72.250.1628.2](#) [72.250.2428.2](#) [74720-0505](#) [76.350.0729.0](#) [76871-1403](#) [FCN-244F080-G/1](#) [FCN-260A9920](#) [MP-5T180MUNNA-005](#)
[PCR-E36PM](#) [PCS-XE26MA+](#) [G38A71314B](#) [1571250010](#) [157-22500-3](#) [MS3471L14-19P L/C](#) [91-569786-35H](#) [172501-4002](#) [172501-6002](#)
[FCN-260C008-A/L0](#) [FCN-260C024-AL0](#) [FCN-261Z008](#) [2000314-1](#) [200331-1](#) [PCR-E36FC+](#) [PCS-E28FS+](#) [PCS-XE26SLFD+](#) [PCS-](#)
[XE26SLFDT+](#) [G730VID08BDC24](#) [U90B2054081210](#) [UE86K842720321](#) [38113800006](#) [DP3AR020WQ1R200](#) [Z4.102.0680.0](#) [500-1040](#)
[500-1052](#) [500-1054](#) [ZP-4008-66L](#) [0709821002](#) [10-565995-597N](#) [DX40-20P\(55\)](#) [5554841-1](#) [MS3474W18-8P-LC*](#) [U90B3054061110](#) [U65-](#)
[E04-4020](#) [ZPF000000000097891](#) [557-262M2-06C](#) [747360449](#) [10099439-003C-TRLF](#) [10137239-0021LF](#) [E9320-001-01](#)