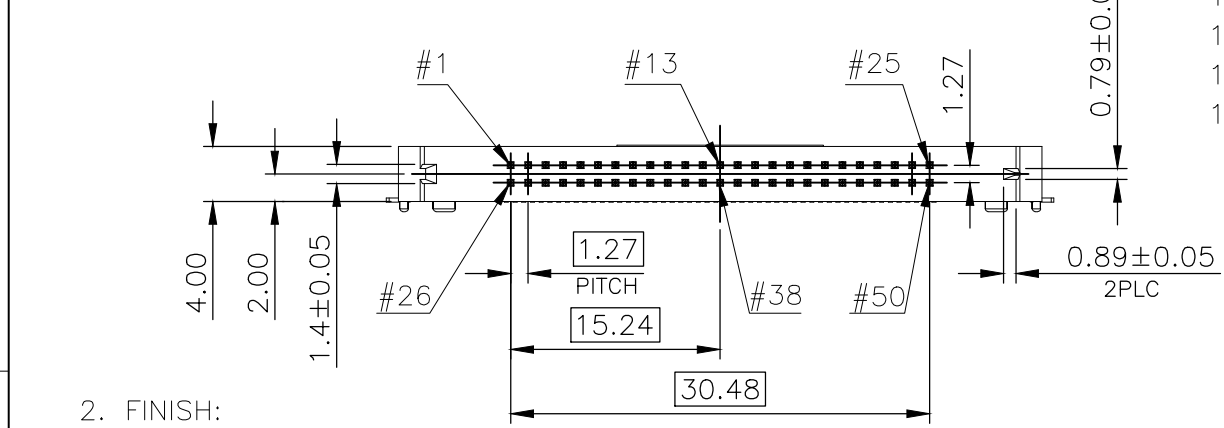
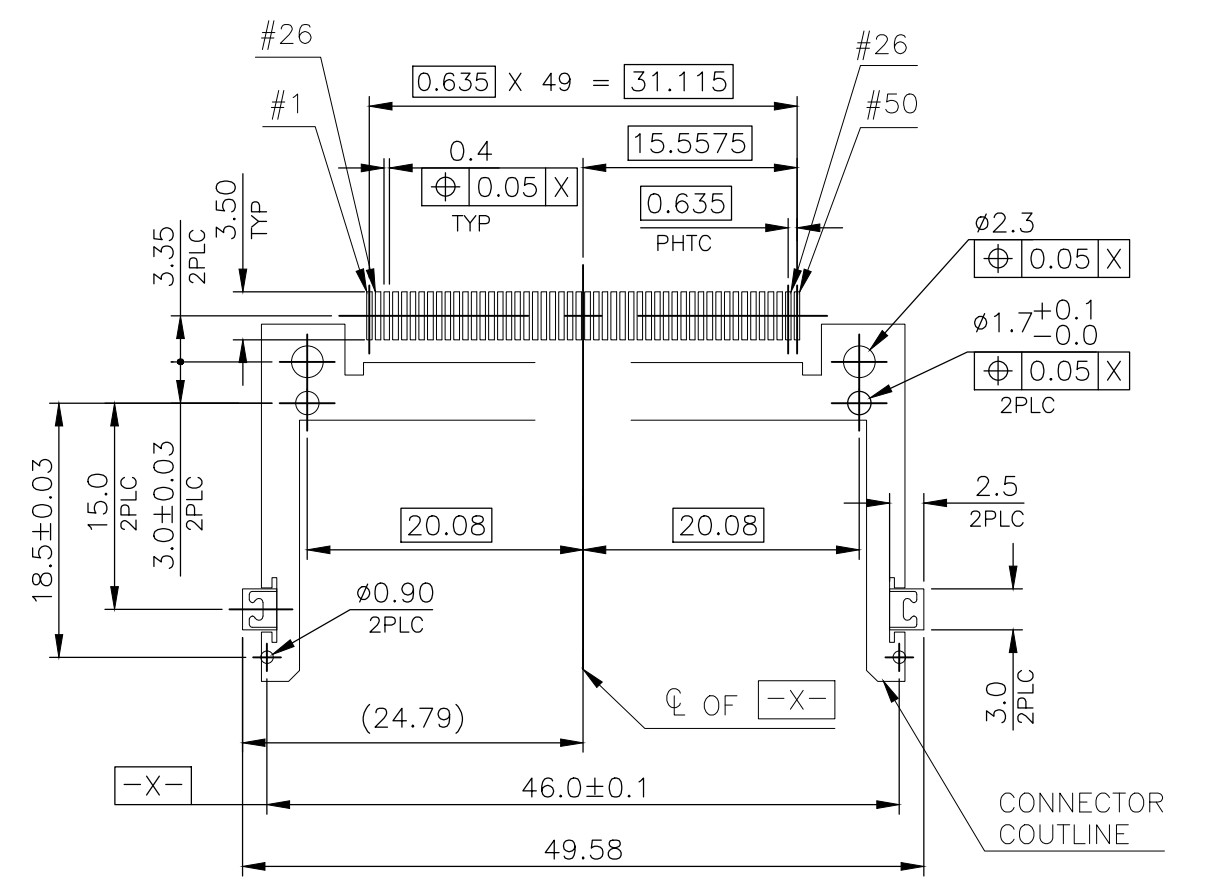
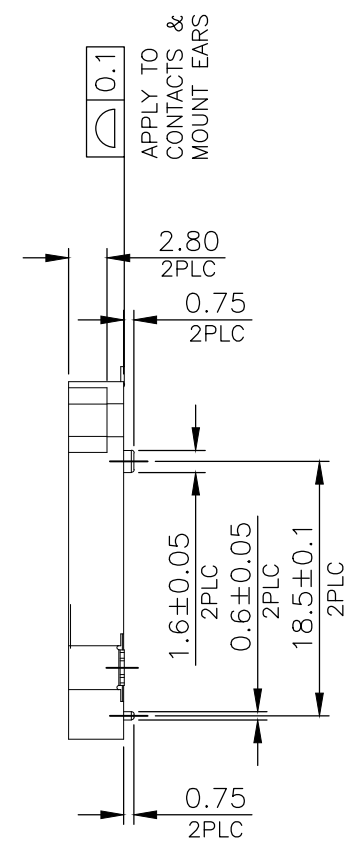
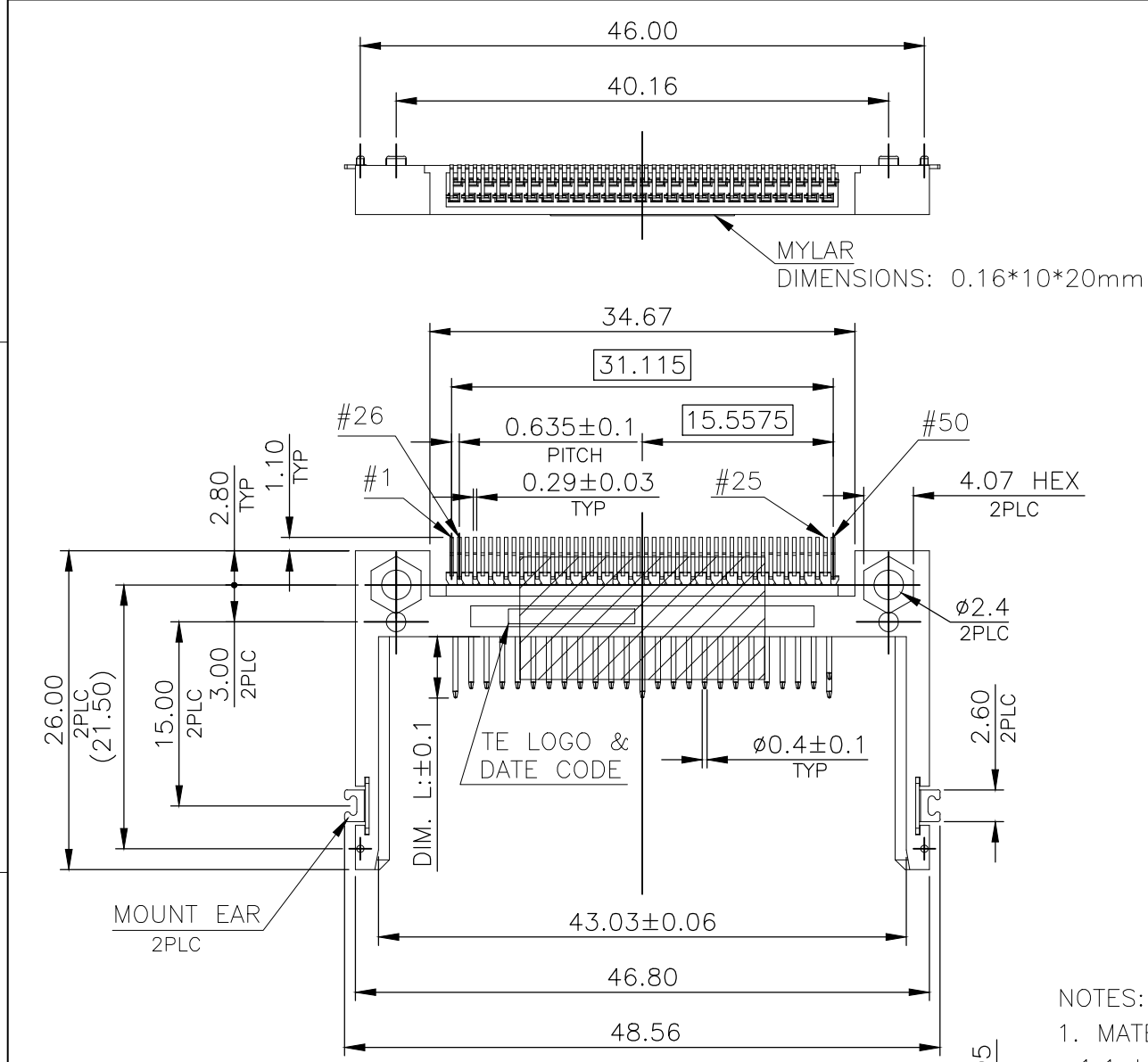


THIS DRAWING IS UNPUBLISHED. RELEASED FOR PUBLICATION
 © COPYRIGHT - TE Connectivity ALL RIGHTS RESERVED.

P	LTR	DESCRIPTION	DATE	DWN	APVD
F		REVISED PER ECR-17-016350	07NOV2017	R.Z	S.L



- NOTES:
 1. MATERIAL:
 1.1 HOUSING: THERMOPLASTIC, UL94 V-0, COLOR: NATURAL.
 1.2 CONTACT: BRASS, THICKNESS=0.45mm
 1.3 MOUNT EAR: BRASS, THICKNESS=0.3mm
 1.4 MYLAR: POLYETHYLENE, YELLOR COLOR.

POWER	5.00mm	1, 13, 38, 50
GENERAL	4.25mm	ALL OTHER PINS
DETECT	3.50mm	25, 26
PIN TYPE	INTERFACE DIM. L	PIN NO.

AVAILABLE	REEL		GOLD FLASH	0.381um [15u"]	3-1734451-1
AVAILABLE				0.381um [15u"]	2-1734451-1
OBSOLETE		WITH	GOLD FLASH		1-1734451-3
OBSOLETE			MATTE-TIN 2.54um [100u"] MIN	0.762um [30u"]	1-1734451-2
AVAILABLE	TRAY			0.381um [15u"]	1-1734451-1
OBSOLETE				0.762um [30u"]	1-1734451-2
AVAILABLE		W/O		0.381um [15u"]	1734451-1
STATUS	PACKAGE	MYLAR	PLATING ON SOLDER TAILS	MIN. GOLD THICKNESS	PART No.

2. FINISH:
 2.1 CONTACT: GOLD PLATED (SEE TABLE) ON CONTACT AREA,
 GOLD OR MATTE-TIN PLATING (SEE TABLE) ON SOLDER TAILS,
 1.27um[50u"] MIN. NICKEL UNDERPLATED OVERALL
 2.2 MOUNT EAR: 2.54um [100u"] MIN. MATTE-TIN PLATED OVERALL
 1.27um [50u"] MIN. NICKEL UNDERPLATED OVERALL.
 3. CONNECTOR REQUIRES USE OF 2 - SIZE M2 SCREWS FOR FASTENING TO
 PRINTED CIRCUIT BOARD.
 4. REFLOW SOLDER CAPABLE TO 260° PER TE CONNECTIVITY SPEC 109-201,
 CPMDOTOPM B.

THIS DRAWING IS A CONTROLLED DOCUMENT.

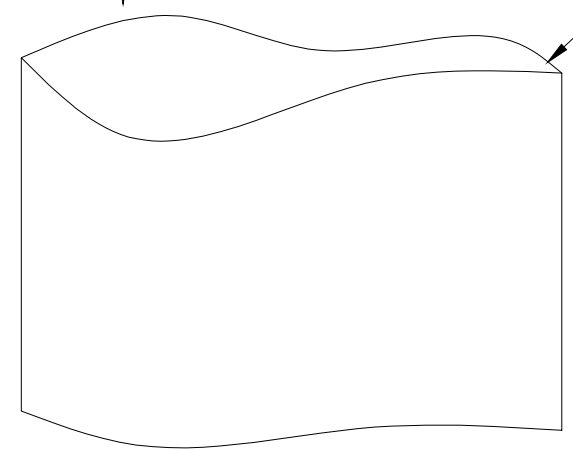
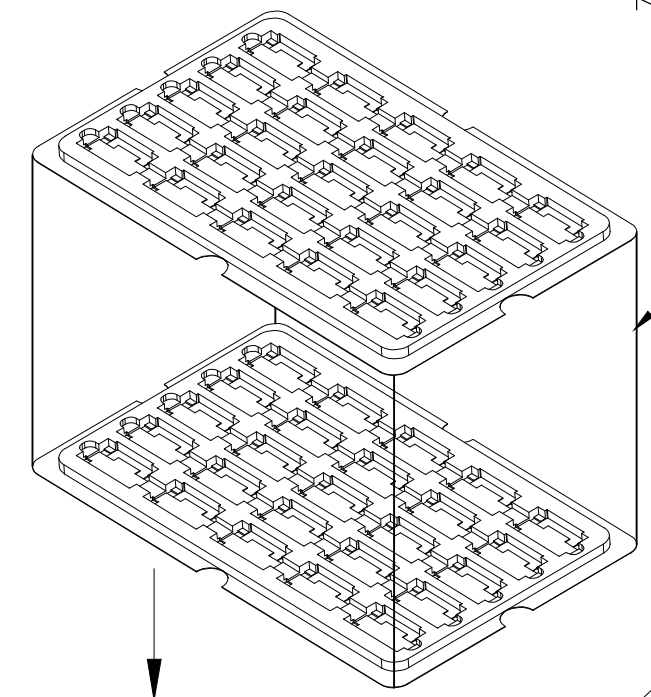
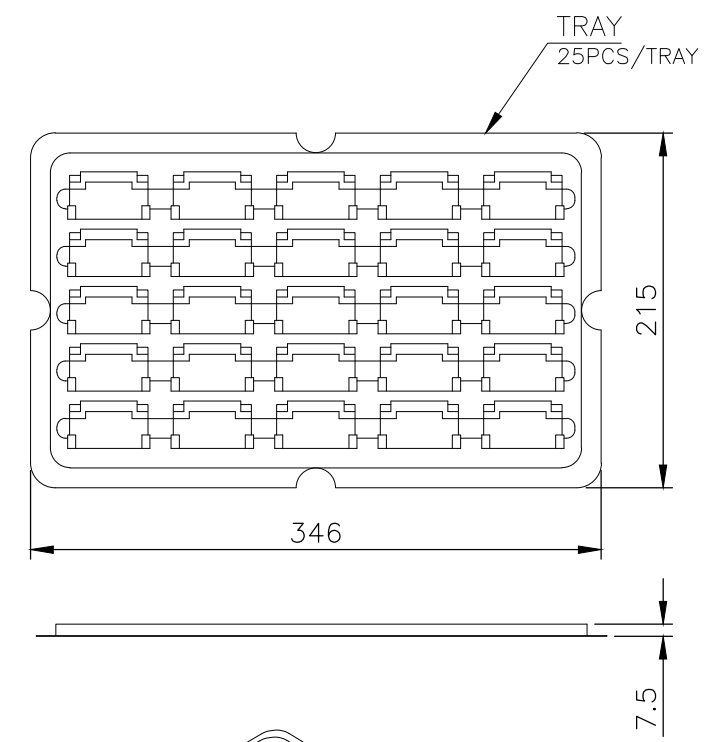
DWN	S.CHIEEN	21JAN2017
CHK	S.HOU	21JAN2017
APVD	W.KODAWA	21JAN2017
PRODUCT SPEC	108-57134	
APPLICATION SPEC	-	
WEIGHT	2.52 GRAMS	A300779 C-1734451
CUSTOMER DRAWING	SCALE	1:1
	SHEET	1 OF 3
	REV	F

STE TE Connectivity

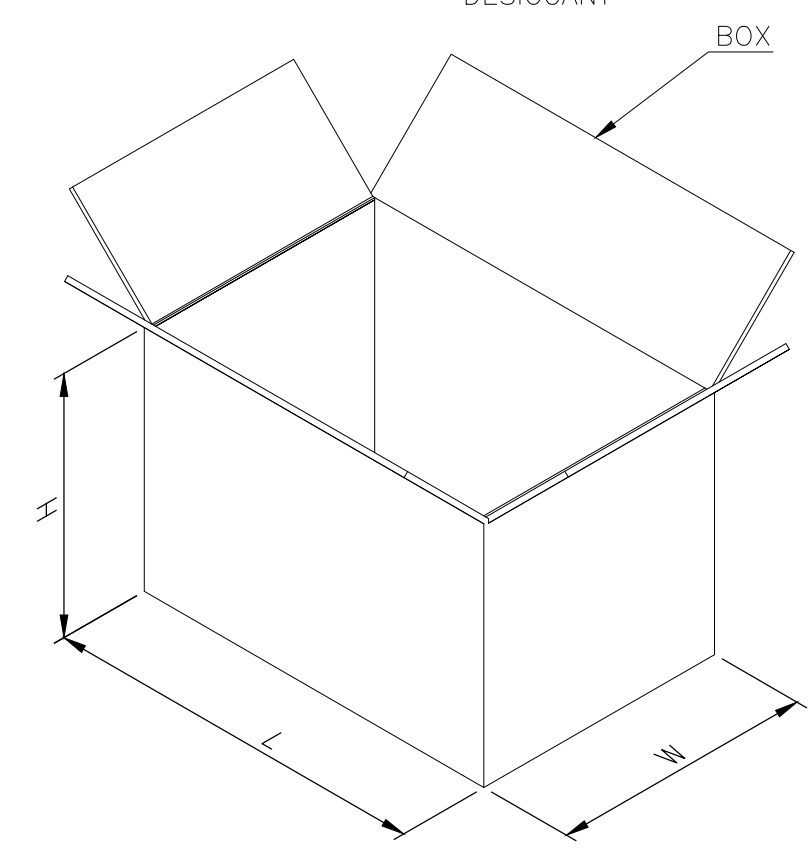
COMPACT FLASH CARD CONNECTOR
 HEADER ASSEMBLY, 50 POS
 TOP MOUNT, SMT TYPE, H=4.0mm

THIS DRAWING IS UNPUBLISHED. RELEASED FOR PUBLICATION
 © COPYRIGHT - TE Connectivity ALL RIGHTS RESERVED.

REVISIONS					
P	LTR	DESCRIPTION	DATE	DWN	APVD
-	-	SEE SHEET 1	-	-	-



- NOTES :
- MATERIAL :
 TRAY : PS.
 BAG : PE
 BOX : CORRUGATED FIBERBOARD.
 - DIMENSION :
 TRAY : L=346mm, W=215mm, H=7.5mm
 BAG : L=600mm, W=550mm, THICKNESS=0.1mm
 BOX : L=356mm, W=225mm, H=292mm
 - EACH BAG SHALL BE INCLUDED:
 * DESICCANT



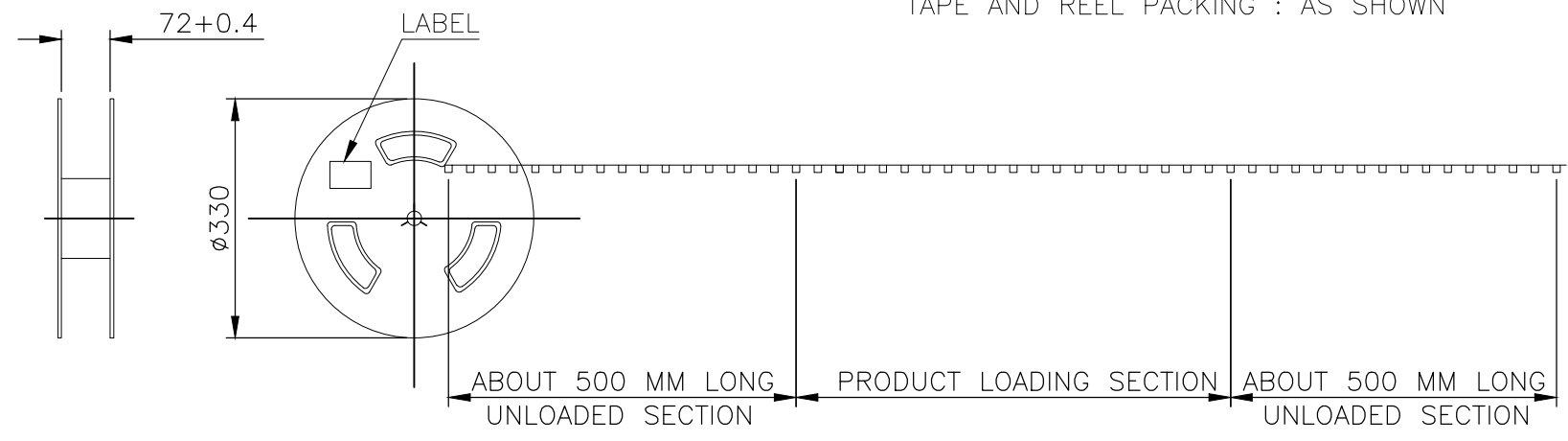
5.45 Kg	2.51 Kg	25	40	1000	1-1734451-1
					1734451-1
GROSS WEIGHT	NET WEIGHT	PCS/TRAY	TRAY/BOX	PCS/BOX	PART NUMBER

THIS DRAWING IS A CONTROLLED DOCUMENT.		DWN S.CHIENT 21JAN2017	STE TE Connectivity		
DIMENSIONS: mm		CHK S.HOU 21JAN2017			
TOLERANCES UNLESS OTHERWISE SPECIFIED:		APVD W.KODAWA 21JAN2017	NAME		
0 PLC ± -		PRODUCT SPEC	COMPACT FLASH CARD CONNECTOR		
1 PLC ± 0.3		108-57134	HEADER ASSEMBLY, 50 POS		
2 PLC ± 0.2		APPLICATION SPEC	TOP MOUNT, SMT TYPE, H=4.0mm		
3 PLC ± 0.15		-	SIZE	CAGE CODE	DRAWING NO
4 PLC ± -		MATERIAL SEE NOTE	A3	00779	C=1734451
ANGLES ± 3°		FINISH SEE NOTE	WEIGHT	RESTRICTED TO	
			2.52 GRAMS		
			CUSTOMER DRAWING	SCALE 1:1	SHEET 2 OF 3
				REV F	

THIS DRAWING IS UNPUBLISHED. RELEASED FOR PUBLICATION
 © COPYRIGHT - TE Connectivity ALL RIGHTS RESERVED.

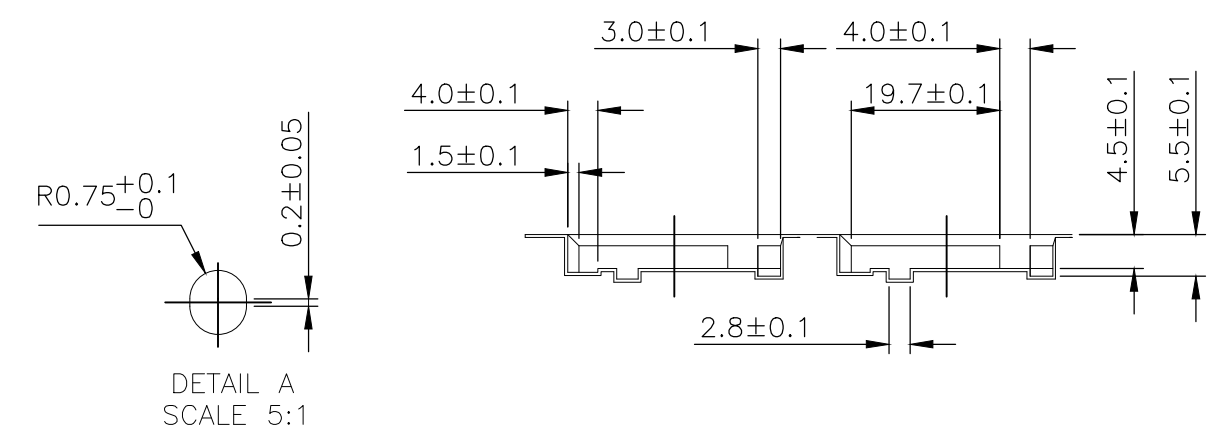
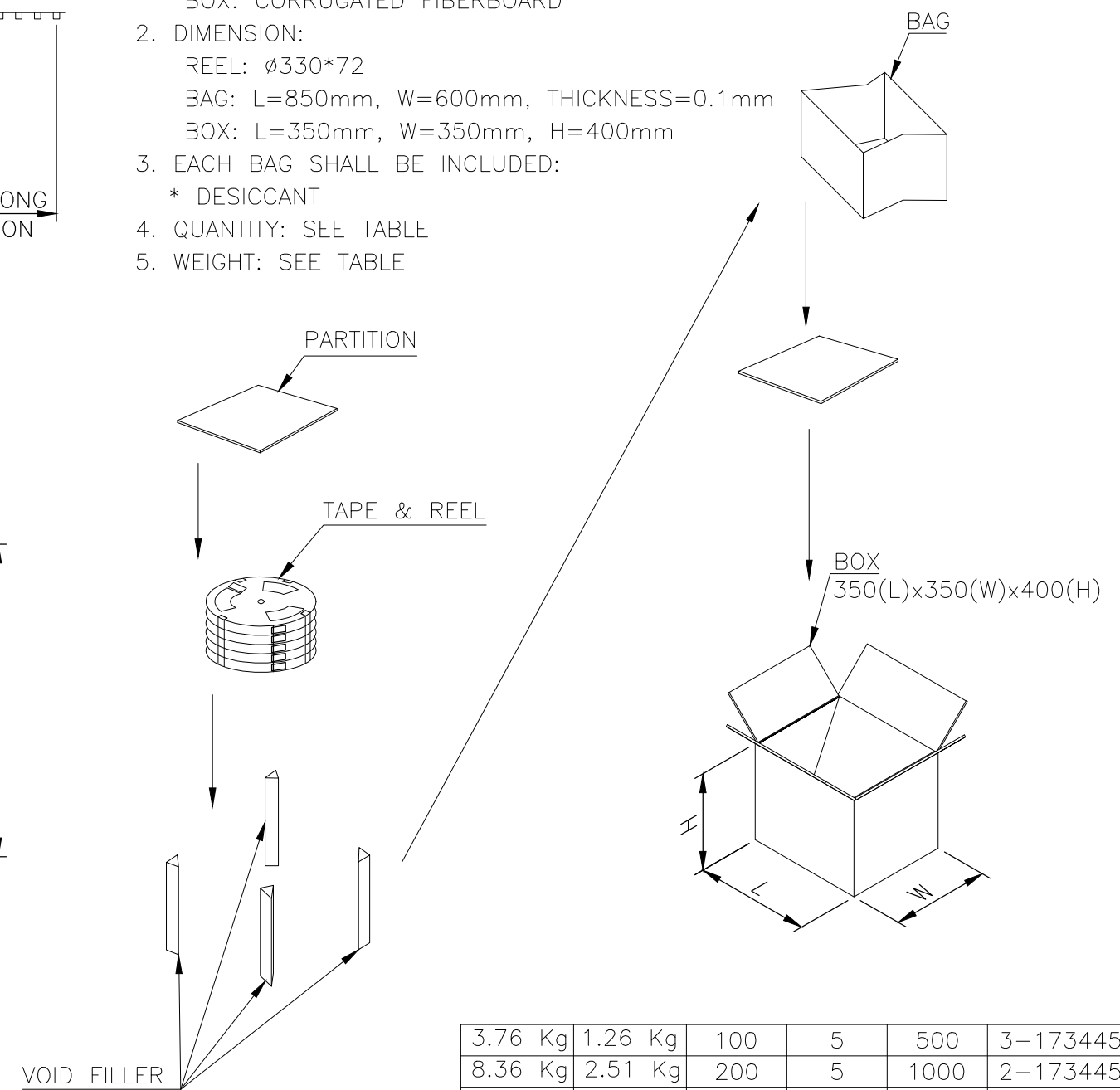
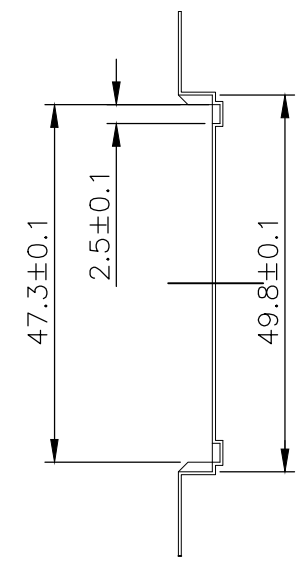
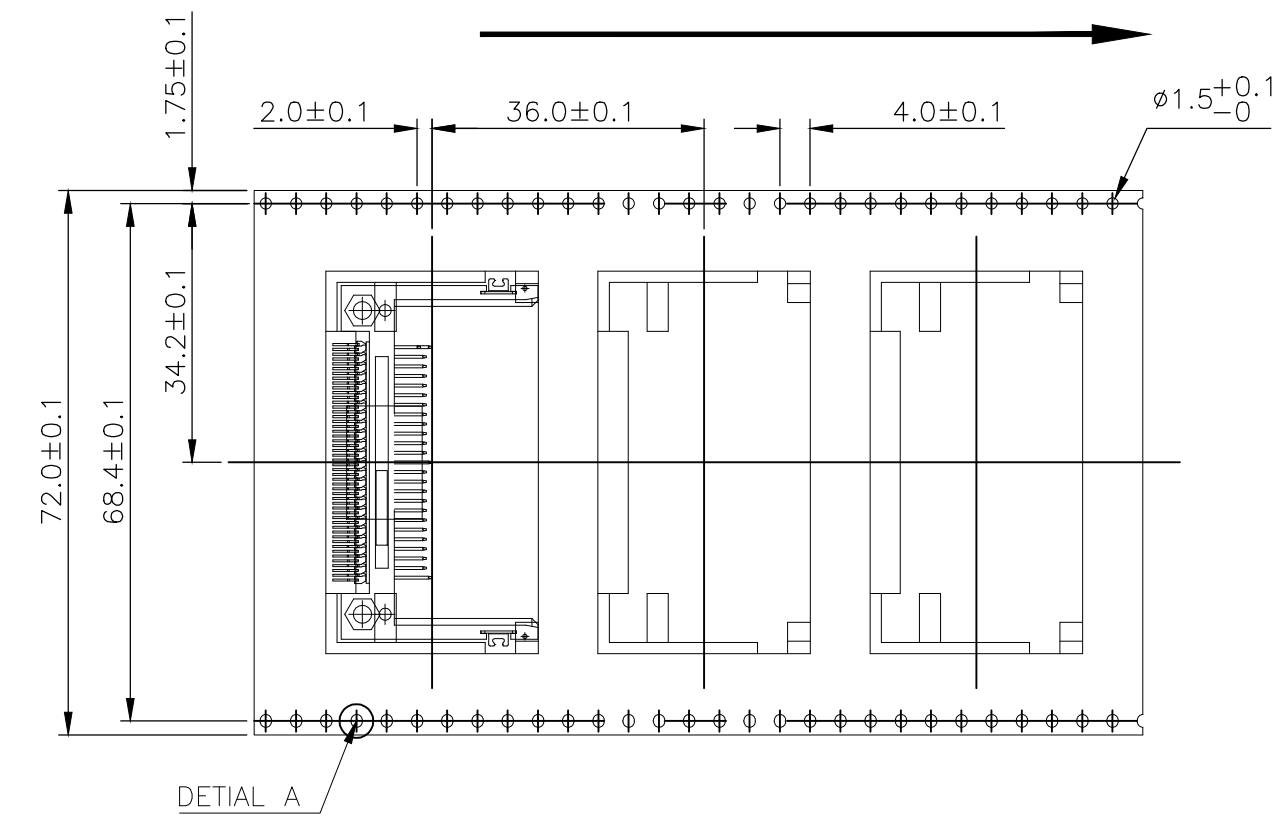
REVISIONS					
P	LTR	DESCRIPTION	DATE	DWN	APVD
-	-	SEE SHEET 1	-	-	-

TAPE AND REEL PACKING : AS SHOWN



NOTES:

- MATERIAL:
 REEL: PS.
 BAG: PE
 BOX: CORRUGATED FIBERBOARD
- DIMENSION:
 REEL: $\phi 330 \times 72$
 BAG: L=850mm, W=600mm, THICKNESS=0.1mm
 BOX: L=350mm, W=350mm, H=400mm
- EACH BAG SHALL BE INCLUDED:
 * DESICCANT
- QUANTITY: SEE TABLE
- WEIGHT: SEE TABLE



GROSS WEIGHT	NET WEIGHT	PCS/ REEL	REEL/ BOX	PCS/ BOX	PART NUMBER
3.76 Kg	1.26 Kg	100	5	500	3-1734451-1
8.36 Kg	2.51 Kg	200	5	1000	2-1734451-1

THIS DRAWING IS A CONTROLLED DOCUMENT.		DWN S.CH IEN 21JAN2017	TE Connectivity		
DIMENSIONS: mm		CHK S.HOU 21JAN2017			
TOLERANCES UNLESS OTHERWISE SPECIFIED:		APVD W.KODAWA 21JAN2017	NAME		
0 PLC ± -		PRODUCT SPEC	COMPACT FLASH CARD CONNECTOR		
1 PLC ± 0.3		108-57134	HEADER ASSEMBLY, 50 POS		
2 PLC ± 0.2		APPLICATION SPEC	TOP MOUNT, SMT TYPE, H=4.0mm		
3 PLC ± 0.15		-	SIZE	CAGE CODE	DRAWING NO
4 PLC ± -		WEIGHT 2.52 GRAMS	A3	00779	C=1734451
ANGLES ± 3'		CUSTOMER DRAWING	SCALE 1:1	SHEET 3 OF 3	REV F
MATERIAL SEE NOTE		FINISH SEE NOTE	RESTRICTED TO -		

X-ON Electronics

Largest Supplier of Electrical and Electronic Components

Click to view similar products for [Headers & Wire Housings](#) category:

Click to view products by [TE Connectivity](#) manufacturer:

Other Similar products are found below :

[892-18-020-10-001101](#) [58102-G61-06LF](#) [582553-1](#) [0009485154](#) [009176003701906](#) [0050291907](#) [LY20-4P-DT1-P1E-BR](#) [02.125.8002.8](#)
[609-3404](#) [61062-3](#) [61082-181009](#) [622-3653LF](#) [63453-116](#) [636-1030](#) [636-1427](#) [636-3427](#) [636-4007](#) [641938-9](#) [641991-4](#) [644827-2](#) [65817-010LF](#) [65817-015LF](#) [65863-015LF](#) [66207-023LF](#) [67095-007LF](#) [67601157](#) [68645-018](#) [68648-049](#) [70.362.1628.0](#) [70-4210](#) [70-4226B](#) [70-4853B](#) [707-5020](#) [707-5028](#) [71.350.2428.0](#) [71918-208LF](#) [71961-016LF](#) [733-134](#) [733-162](#) [754199-000](#) [760-3052](#) [787-8014-00](#) [79531-3000](#)
[FCN-360C032-B](#) [FCN-367T-T012/H](#) [FCN-723D010/2](#) [80.063.4001.1](#) [800-90-001-10-001000](#) [800-90-010-10-002000](#) [801-43-002-10-013000](#)