

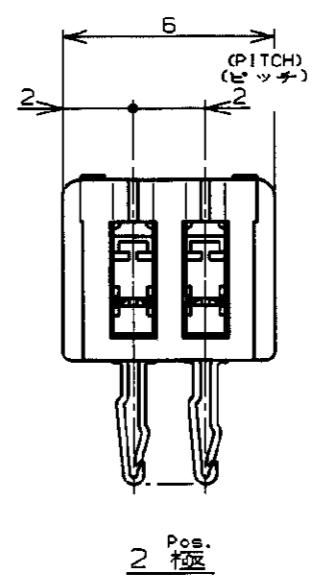
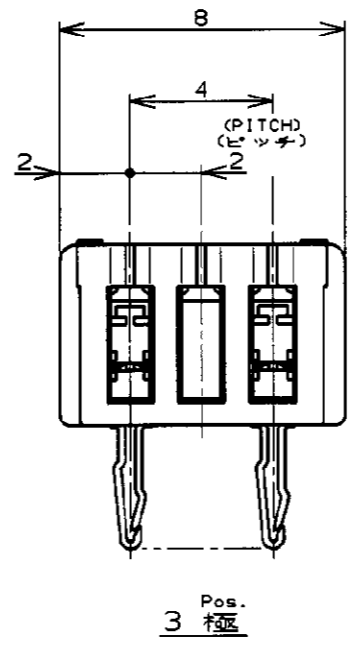
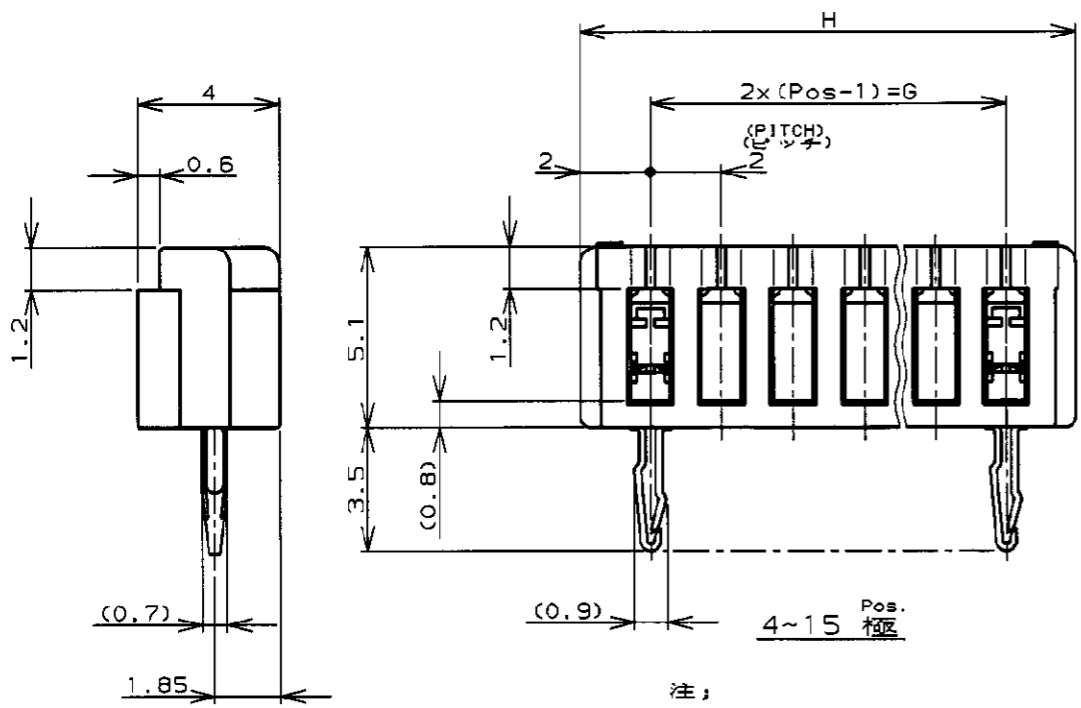
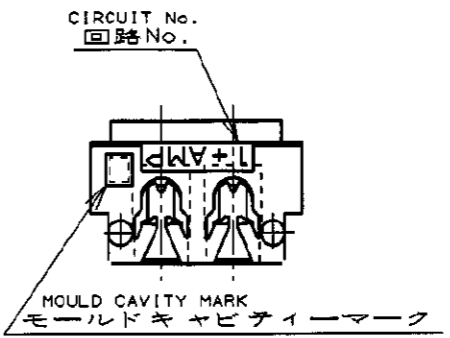
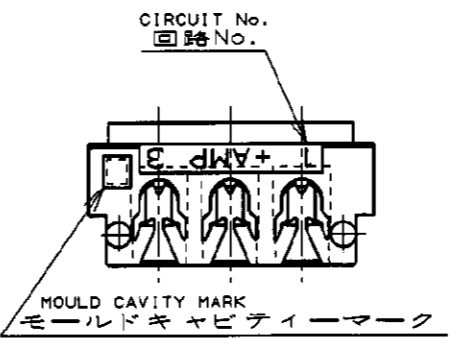
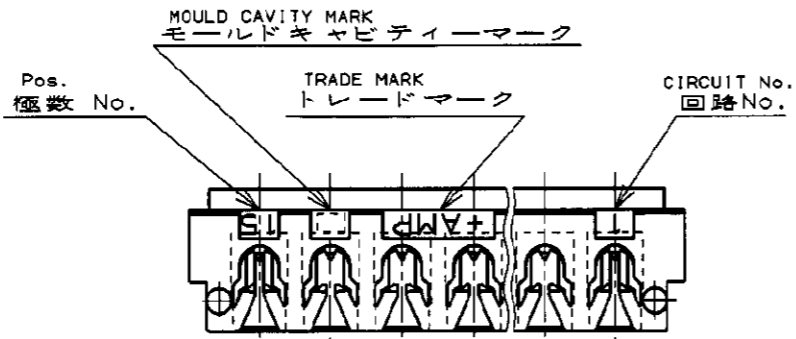
NUMBER C-173985
 METRIC
 三角法 (3rd ANGLE PROJECTION)
 単位: 概 DIMENSIONS IN MM. DO NOT SCALE PRINT
 PRINT DIST

4

3

2

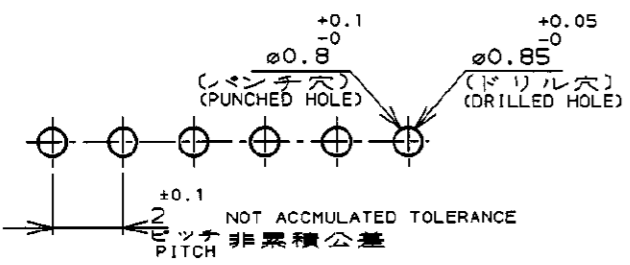
1



- 注;
1. 適用電線範囲 : AWG #28~26 (UL1571, UL1061)
被覆外径 : 0.83~10.5
(但し、使用電線について適合性に確認が必要です。)
 2. 材料 : ハウジング : ガラス入りP.B.T UL94V-0
コンタクト : 錫めつき済磷青銅
 3. 適用製品規格番号 : 108-5217
 4. 取付適用規格番号 : 114-5103

- NOTES;
1. APPLICABLE WIRE SIZE : AWG #28~26 (UL1571, UL1061)
INSULATION DIA RANGE : 0.83~1.05
 2. MATERIAL :
HOUSING : P.B.T. (G.F)UL94V-0
CONTACT : PRE-TIN PHOS BRONZE
 3. PRODUCT SPEC : 108-5217
 4. APPLICATION SPEC : 114-5103

| | | | |
|----------------------|------------|-------------|-------------|
| 3-173985-5 | 15 | 28 | 32 |
| 3- | -4 | 14 | 26 30 |
| 3- | -3 | 13 | 24 28 |
| 3- | -2 | 12 | 22 26 |
| 3- | -1 | 11 | 20 24 |
| 3- | -0 | 10 | 18 22 |
| 2- | -9 | 9 | 16 20 |
| 2- | -8 | 8 | 14 18 |
| 2- | -7 | 7 | 12 16 |
| 2- | -6 | 6 | 10 14 |
| 2- | -5 | 5 | 8 12 |
| 2- | -4 | 4 | 6 10 |
| 2- | -3 | 3 | AS SHOWN 図示 |
| 2-173985-2 | 2 | AS SHOWN 図示 | |
| LIGHT BULB ライトフルー | Pos. 極数 | G | H |
| PART No. 製品型番 | | | |



RECOMMENDABLE P.C. BOARD LAYOUT
 推奨基板穴寸法
 (適用基板厚0.8~1.6)
 (P.C.B THK:0.8~1.6)

| | | | | |
|-----|---------------------------|----|-----|--------|
| F1 | REVISED PER ECO-11-005033 | RK | HMR | 2APR11 |
| LTR | 変更 (REVISION RECORD) | DR | CHK | DATE |

| | | | |
|---------------------------------|----------------------------|--|----------------------|
| | | TE Connectivity | |
| 組合電線断面積 (WIRE RANGE) | 被覆外径 (INSULATION DIA.) | 名称 (NAME) | |
| NOTE 1 mm ² (AWG -) | NOTE 1 mmφ | CT AMP-IN HEADER 2mm PITCH MT VERTICAL (V-TYPE) | |
| 材料 (MATERIAL) | 仕上 (FINISH) | 一般公差 (GENERAL TOLERANCE) | |
| NOTE 2 | — / — | 10以下 : ±0.2 10を超え 30以下 : ±0.25 30を超え 100以下 : ±0.3 角 度 : ±3° | |
| DR. 23/AUG/99 J. TSUJI | DE. 23/AUG/99 J. Tsuji | LOC B J | 番号 (No.) C-173985 |
| CRK 23/AUG/99 J. Tsuji | APP. 23/AUG/99 J. Tsuji | 尺度 (SCALE) 5-1 | REV. F1 SHEET 1 OF 1 |

X-ON Electronics

Largest Supplier of Electrical and Electronic Components

Click to view similar products for [Headers & Wire Housings](#) category:

Click to view products by [TE Connectivity](#) manufacturer:

Other Similar products are found below :

[95000-104TRLF](#) [10135584-644402LF](#) [DF62W-EP2022PCA](#) [95000-106TRLF](#) [DF62W-2022SCA](#) [DF62W-EP2022PC](#) [2203348](#) [DF62W-2022SC](#) [1084018](#) [1029039](#) [1084017](#) [802-10-012-10-002000](#) [1112640](#) [1112639](#) [000-34000](#) [0009482033](#) [0009507031](#) [57102-S06-03LF](#) [57202-S52-04LF](#) [PCN6-15S-2.5E](#) [0039019024](#) [58102-G61-06LF](#) [582553-1](#) [0009508121](#) [0050291907](#) [018731A](#) [LY20-4P-DT1-P1E-BR](#) [02.125.8002.8](#) [60101931](#) [60598-1 \(Cut Strip\)](#) [M1625-3R/100](#) [61062-3](#) [61082-181009](#) [636-1427](#) [638009-1](#) [641938-9](#) [641991-4](#) [644168-1](#) [647662-1](#) [65039-019ELF](#) [65817-002LF](#) [65817-015LF](#) [65863-015LF](#) [66207-023LF](#) [67016-026LF](#) [67046-001LF](#) [67095-007LF](#) [68002-116](#) [68016-236H](#) [68648-049](#)