

4

3

2

1

THIS DRAWING IS UNPUBLISHED. RELEASED FOR PUBLICATION 2017
 © COPYRIGHT 2017 TE Connectivity Germany GmbH ALL RIGHTS RESERVED.

VERSION I

VERSION II

REVISIONS				
P	LTR	DESCRIPTION	DATE	APVD
1		NEW DRAWING	06MAY2011	TS HV
2		Drawing reworked.	26JUL2012	JTO DHV
A		Add 0-2177061-1 at drawing. Rework drawing.	10OCT2013	JTO DHV
B		Sheet 2. obsolete	14JUN2016	W SA DHV
C		ADDED VERSION II	09MAY2017	CR DHV
D		0-2177061-1 MADE OBSOLETE	05NOV2018	AHM DHV

NOTES:

Bemerkungen:

- ONLY THE GERMAN LANGUAGE IS AUTHORITATIVE
Massgebend ist der deutsche Text
- PACKAGING: BULK PACKAGING IN SHIPPING BOX
Verpackung: Schuettgut in Versandkarton

NOTE Bem.	FEATURE Merkmal
3	PRODUCT-SPEC. 108-94297 Produkt-Spez.
4	APPLICATION-SPEC. 114-94130 Verarbeitungs-Spez.

0-2177061-2	SHIELD CRIMP FERRULE Untercrimphuelse	STAINLESS STEEL 1.4301 Edelstahl 1.4301	2.2	BLANK blank	SERIEL-TOOL Serien-Werkzeug	II
0-2177061-1	SHIELD CRIMP FERRULE Untercrimphuelse	STAINLESS STEEL 1.4301 Edelstahl 1.4301	2.2	BLANK blank	SERIEL-TOOL Serien-Werkzeug	I
TE-ORDER-NO. TE-Bestell-Nr.	DESCRIPTION Benennung	MATERIAL	WEIGHT (G) Gewicht [g]	SURFACE Oberflaeche	TOOL	VERS.

THIS DRAWING IS A CONTROLLED DOCUMENT.		DWN T.Salman	06MAY2011	 TE Connectivity
DIMENSIONS: mm		CHK U.Hoepfner	09MAY2011	
TOLERANCES UNLESS OTHERWISE SPECIFIED: DIN ISO 2768 - mK		APVD D.H.Vu	09MAY2011	
MATERIAL		NAME SHIELD CRIMP FERRULE Untercrimphuelse		RESTRICTED TO
FINISH		SIZE A2		SCALE 5:1
-		CAGE CODE 00779		SHEET 1 OF 2
-		DRAWING NO. 0-2177061		REV D
-		WEIGHT SEE TABLE A2		
-		CUSTOMER DRAWING		

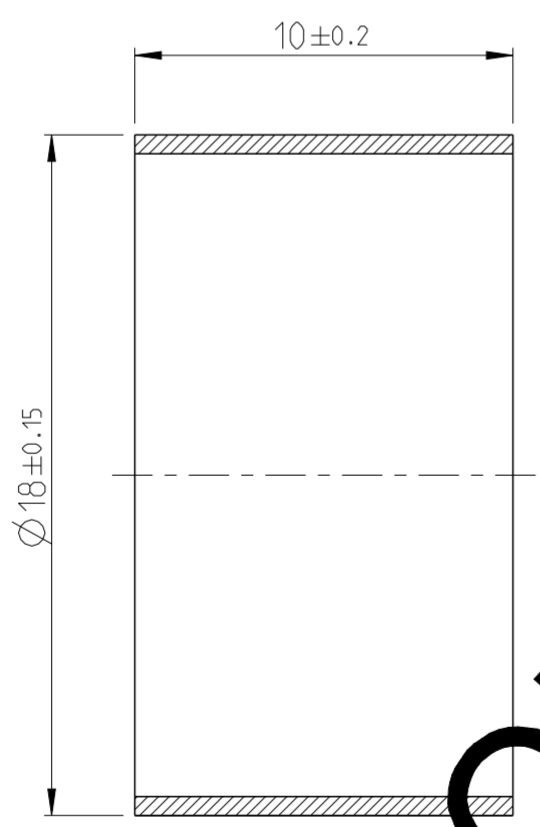
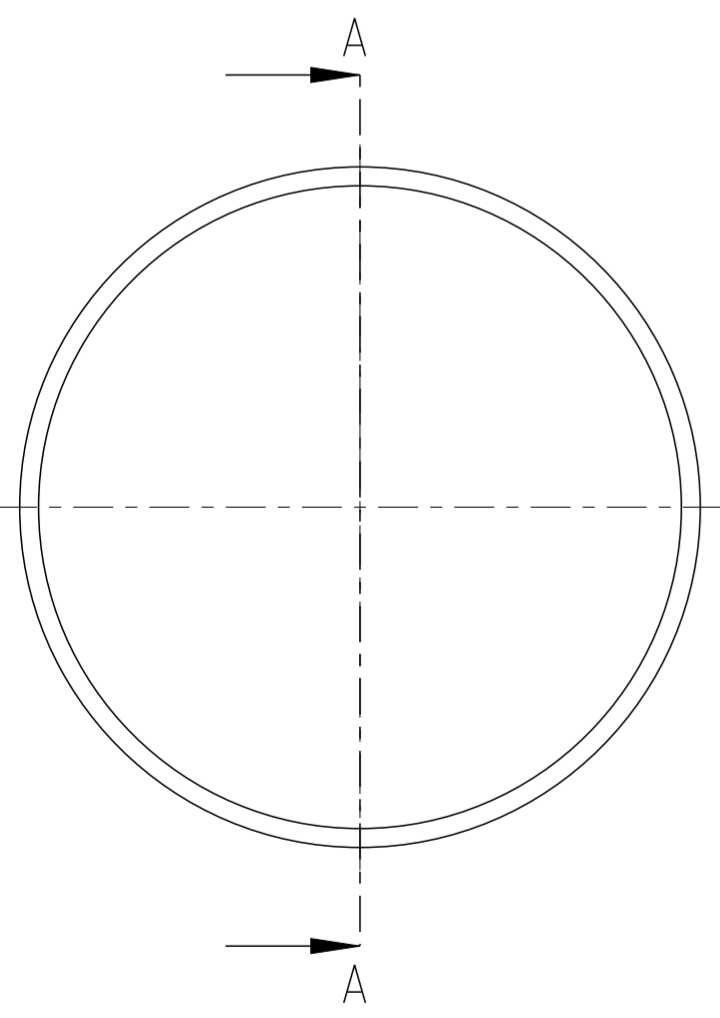
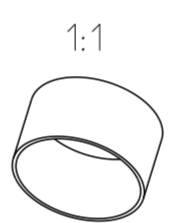
1471-9 (3/13)

THIS DRAWING IS UNPUBLISHED. RELEASED FOR PUBLICATION 2011
 © COPYRIGHT 2011 Tyco Electronics AMP GmbH ALL RIGHTS RESERVED.

LOC AI DIST -

REVISIONS				
P	LTR	DESCRIPTION	DATE	APVD
-		SEE SHEET 1	-	-

9-2177061-1	SHIELD CRIMP FERRULE Untercrimphuetse	STAINLESS STEEL 1.4301 Edelstahl 1.4301	2.2	BLANK blank	LOW-VOLUME-TOOL Kleinserien-Werkzeug
TE-ORDER-NO. TE-Bestell-Nr.	DESCRIPTION Benennung	MATERIAL	WEIGHT [G] Gewicht [g]	SURFACE Oberflaeche	TOOL



OBSOLETE!

- NOTES:
Bemerkungen:
- ONLY THE GERMAN LANGUAGE IS AUTHORITATIVE
Maßgebend ist der deutsche Text
 - PACKAGING: BULK PACKAGING IN SHIPPING BOX
Verpackung: Schuettgut in Versandkarton

NOTE Bem.	FEATURE Merkmal
	PRODUCT-SPEC. 108-94297 Produkt-Spez.
	APPLICATION-SPEC. 114-94130 Verarbeitungs-Spez.

9- -1 AS SHOWN
wie gezeichnet

THIS DRAWING IS A CONTROLLED DOCUMENT.		DWN T.Salman 06MAY2011	TE TE Connectivity	
DIMENSIONS: mm		CHK U.Hoepfner 09MAY2011		
TOLERANCES UNLESS OTHERWISE SPECIFIED:		APVD D.H.Vu 09MAY2011	NAME SHIELD CRIMP FERRULE Untercrimphuetse	
0 PLC ±		PRODUCT SPEC	SIZE CAGE CODE DRAWING NO RESTRICTED TO	
1 PLC ±		APPLICATION SPEC	A3 00779 C-2177061 -	
2 PLC ±		WEIGHT SEE TABL	SCALE 5:1 SHEET 2 OF 2 REV D	
3 PLC ±				
4 PLC ±				
ANGLES ±				
MATERIAL SEE TABLE FINISH SEE TABLE				

X-ON Electronics

Largest Supplier of Electrical and Electronic Components

Click to view similar products for [Automotive Connectors](#) category:

Click to view products by [TE Connectivity](#) manufacturer:

Other Similar products are found below :

[003-018-000](#) [60403001](#) [60993906-B](#) [M902-2131](#) [M902-2161](#) [72.330.1035.1](#) [73.353.4028.0](#) [F119300-B](#) [F166900](#) [F258300-B](#) [F358300-B](#)
[F407400](#) [F444110](#) [F487000](#) [F509500B-B](#) [827153-1](#) [8N1515-32-24P](#) [9-1326729-8](#) [925474-1](#) [928905-1](#) [964562-4](#) [968782-1](#) [GT17SA-8DS-](#)
[HU](#) [98891-1012](#) [98947-1016](#) [12004147](#) [12004475-L](#) [12010290](#) [12010309-B](#) [12015454](#) [12020219-B](#) [12020308](#) [12041318-B](#) [12052225-L](#)
[12052466](#) [12059125](#) [12064869](#) [12004327-B](#) [12010503-B](#) [12015308](#) [12015384](#) [12015909](#) [1-21030-1](#) [12041254](#) [12041318](#) [12047946-B](#)
[12047957](#) [12047957-L](#) [12059473](#) [12066261](#)