

THIS DRAWING IS UNPUBLISHED. RELEASED FOR PUBLICATION
 © COPYRIGHT - By - ALL RIGHTS RESERVED.

LOC	DIST	REVISIONS					
FT	0	P	LTR	DESCRIPTION	DATE	DWN	APVD
		C		REVISED PER ECO-12-023039	17FEB12	KH	MS

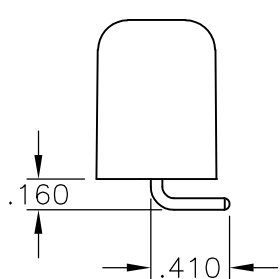
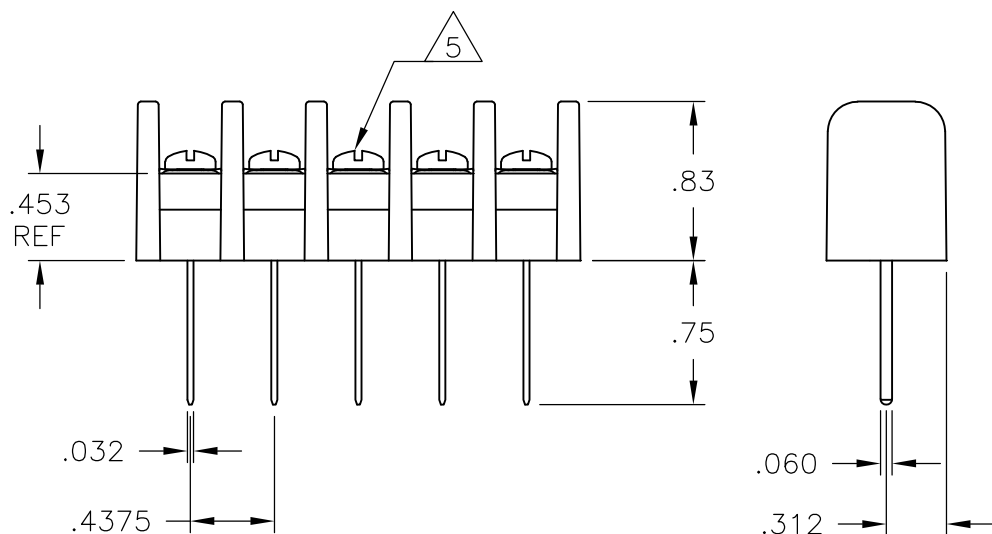
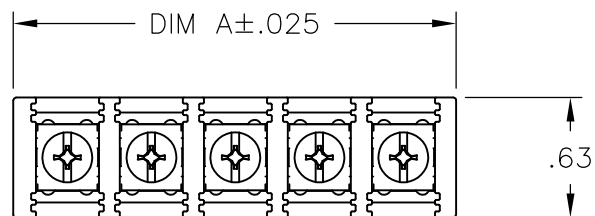
NOTES:

MATERIAL:
 HOUSING: NYLON, UL94V-0, BLACK.
 TERMINAL: BRASS, BRIGHT TIN PLATED.
 SCREWS: 6-32, STEEL, ZINC AND CHROMATE PLATED.

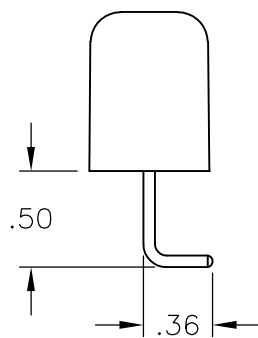
ELECTRICAL:
 MAXIMUM CURRENT: 20A.
 OPERATING VOLTAGE: 600V.
 WIRE RANGE: 12-22 AWG.

ENVIRONMENT:
 OPERATING TEMP.: -60°C TO +105°C.

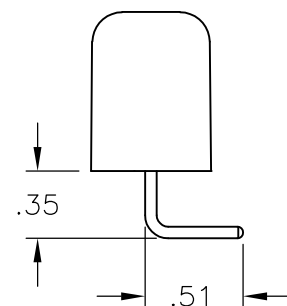
- 1 SCREWS ARE STAINLESS STEEL.
- 2 SEE FIGURE.
- 3 PRELIMINARY PART NUMBER.
- 4 RECOMMENDED PCB HOLE DIA .077±.002
- 5 ALL SCREWS BOTTOMED, TORQUE 2 TO 4 IN-LBS



3-1776044-0



2-1776044-9



2-1776044-8

DIM A	NO. OF POS.	CATALOG NUMBER	PART NUMBER
4.062	9	SSB7FP091401	3-1776044-0
11.937	27	SSB7FP270701	2-1776044-7
11.500	26	SSB7FP260701	2-1776044-6
11.062	25	SSB7FP250701	2-1776044-5
10.625	24	SSB7FP240701	2-1776044-4
10.187	23	SSB7FP230701	2-1776044-3
9.750	22	SSB7FP220701	2-1776044-2
9.312	21	SSB7FP210701	2-1776044-1
8.875	20	SSB7FP200701	2-1776044-0
8.437	19	SSB7FP190701	1-1776044-9
8.000	18	SSB7FP180701	1-1776044-8
7.562	17	SSB7FP170701	1-1776044-7
7.125	16	SSB7FP160701	1-1776044-6
6.687	15	SSB7FP150701	1-1776044-5
6.250	14	SSB7FP140701	1-1776044-4
5.812	13	SSB7FP130701	1-1776044-3
5.375	12	SSB7FP120701	1-1776044-2
4.937	11	SSB7FP110701	1-1776044-1
4.500	10	SSB7FP100701	1-1776044-0
4.062	9	SSB7FP090701	1776044-9
3.625	8	SSB7FP081304	2-1776044-9
3.625	8	SSB7FP080701	1776044-8
3.187	7	SSB7FP070701	1776044-7
2.750	6	SSB7FP060701	1776044-6
2.312	5	SSB7FP050701	1776044-5
1.875	4	SSB7FP041503	2-1776044-8
1.875	4	SSB7FP040701	1776044-4
1.437	3	SSB7FP030701	1776044-3
1.000	2	SSB7FP020701	1776044-2

THIS DRAWING IS A CONTROLLED DOCUMENT.		DWN S SCHL GEL 4/12/04	STE TE Connectivity	
DIMENSIONS: INCHES		CHK S YODER 4/12/04		
TOLERANCES UNLESS OTHERWISE SPECIFIED:		APVD S YODER 4/12/04	NAME	
0 PLC ± -		PRODUCT SPEC	SSB7FPXX0701	
1 PLC ± -		APPLICATION SPEC	RESTRICTED TO	
2 PLC ± .02		WEIGHT -	SIZE A3	CAGE CODE 00779
3 PLC ± .010		MATERIAL -	DRAWING NO C-1776044	
4 PLC ± -			SCALE NTS SHEET 1 OF 1 REV C	
ANGLES ± 1°		CUSTOMER DRAWING		
FINISH -				

X-ON Electronics

Largest Supplier of Electrical and Electronic Components

Click to view similar products for [Barrier Terminal Blocks](#) category:

Click to view products by [TE Connectivity](#) manufacturer:

Other Similar products are found below :

[CR151D20104](#) [670A-RZ-15-KT20](#) [6C1N03](#) [6PCR-02](#) [6PCR-02-008](#) [6PCR-05-008](#) [6PCR-08-008](#) [6PCR-09-008](#) [6PCR-13-006](#) [6PCR-15-006](#) [6PCR-21-006](#) [6PCV-06-008](#) [6PCV-06-716](#) [6PCV-09-001](#) [6PCV-10-009](#) [6PCV-15-008](#) [6PCV-17-1206](#) [6PCV-20-323](#) [6PCV-30-006](#) [6STR-06-006](#) [6STR-08-006](#) [6STR-12-008](#) [6STR-13-006](#) [6STR-14-008](#) [6STR-16-008](#) [6STR-17-008](#) [6STR-21-008](#) [6STR-25-008](#) [6STR-27-008](#) [6STV-03-006](#) [6STV-03-008](#) [6STV-04-006](#) [6STV-09-006](#) [6STV-10-006](#) [6WWR-03-693](#) [6WWV-12-008](#) [6WWV-16-008](#) [72212603](#) [72504-C-50](#) [72506-C](#) [72507-C-50](#) [73203](#) [75505-C](#) [75505-C-50](#) [75510-C](#) [77010-50](#) [7C1N08](#) [812-GP-3/4ST-09](#) [8-1437402-5](#) [8-1437402-7](#)