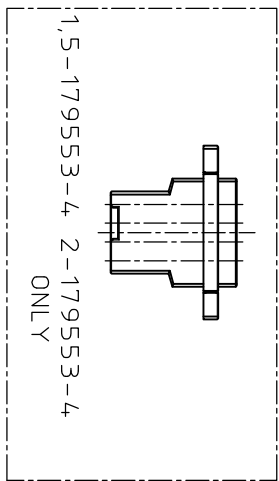
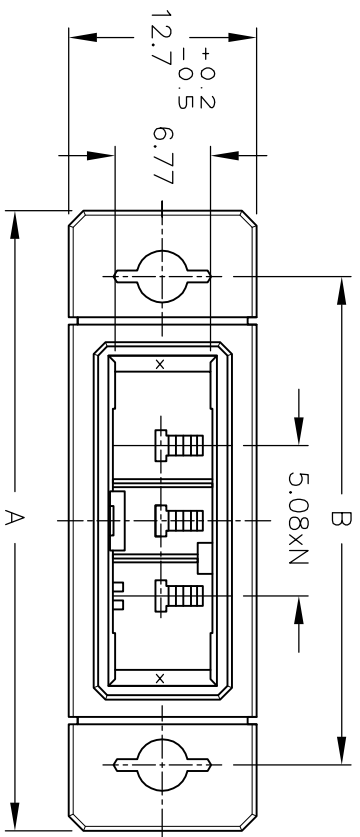
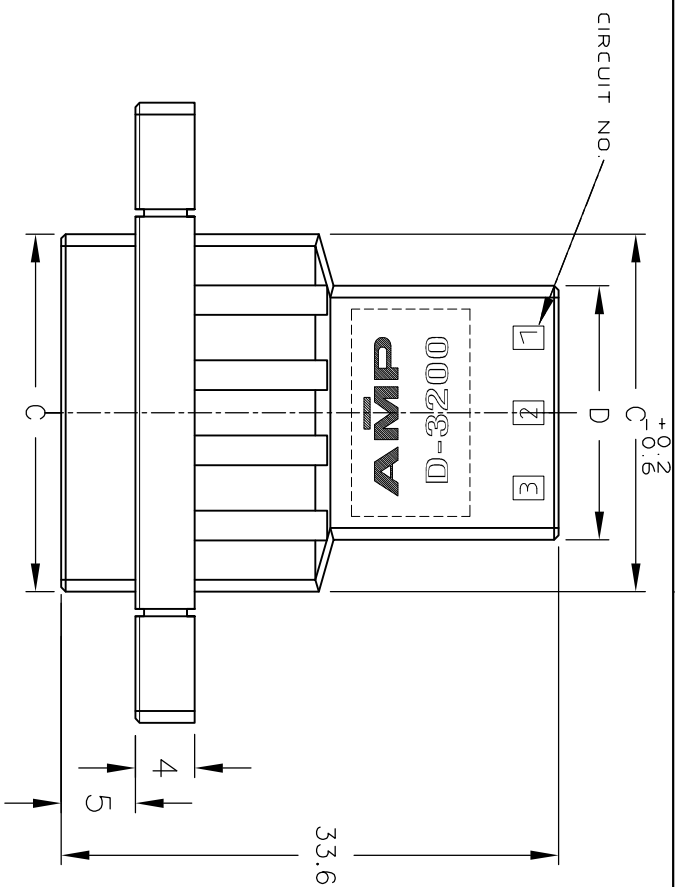


4

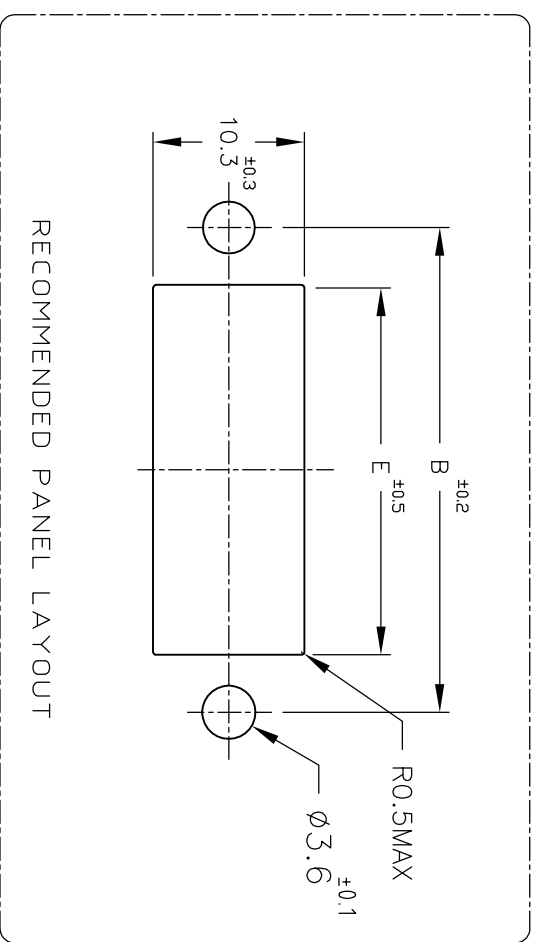
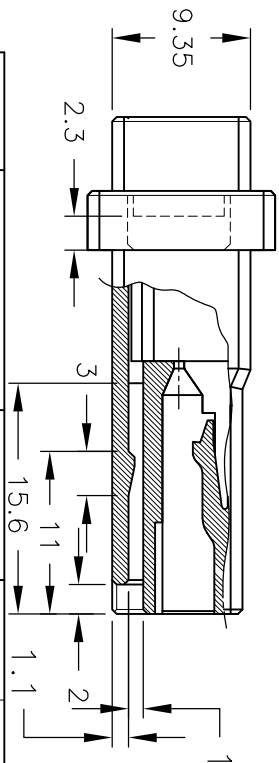
3

2

1

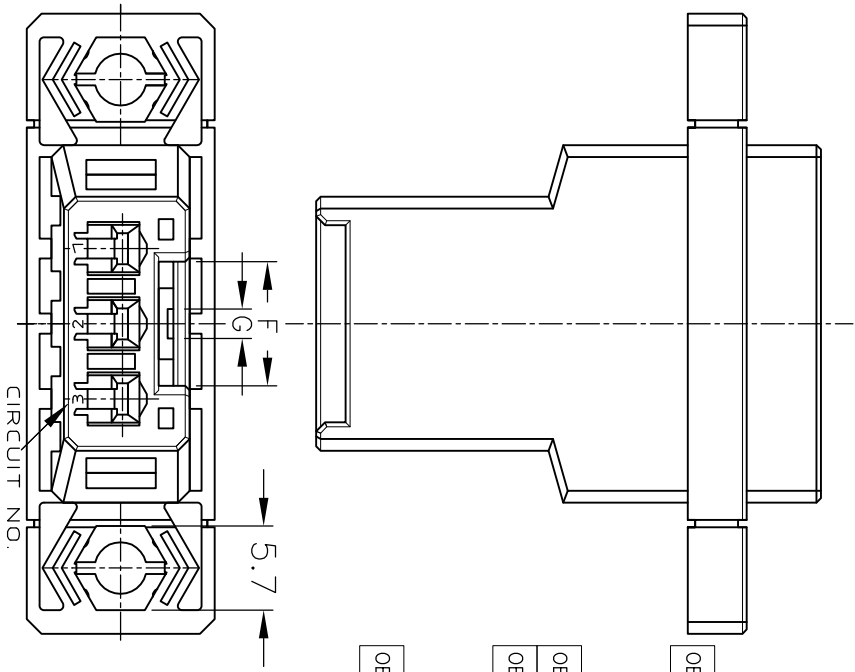


1,5-179553-2, 2-179553-2 ONLY



NOTES

- 1 MATERIAL: GLASS FIELD THERMO PLASTIC, POLYESTER COLOR: BLACK
- 2 TO COAT ALL SURFACE OF HOUSING WITH TEFLON
- 3 PRODUCT SPEC: 108-5349
- 4 PANEL ATTACHMENT RECOMMENDATION M3 SCREW



OBSOLETE		4	4.6.99	38	29.24	22.24	30	8.4	2	3	X	5-179553-4
OBSOLETE		4	4.6.99	38	29.24	22.24	30	8.4	2	3	Y	2-179553-4
OBSOLETE		4	4.6.99	38	29.24	22.24	30	8.4	2	3	X	1-179553-4
OBSOLETE		3	4.1.91	33	24.16	17.16	25	8.4	2	2	Y	6-179553-3
OBSOLETE		3	4.1.91	33	24.16	17.16	25	8.4	2	2	X	5-179553-3
OBSOLETE		3	4.1.91	33	24.16	17.16	25	8.4	2	2	Y	2-179553-3
OBSOLETE		3	4.1.91	33	24.16	17.16	25	8.4	2	2	X	1-179553-3
OBSOLETE		2	3.6.83	28	19.08	12.08	20	8.4	2	1	X	5-179553-2
OBSOLETE		2	3.6.83	28	19.08	12.08	20	8.4	2	1	Y	2-179553-2
OBSOLETE		2	3.6.83	28	19.08	12.08	20	8.4	2	1	X	1-179553-2

FINISH

KEYING PATTERN

POS.

DIMENSION

A

B

C

D

E

F

G

N

KEY

PART NUMBER

(WIRE RANGE)	(INSULATION-DIA)
(MATERIAL)	(FINISH)
SEE NOTES	
DR. N. Matsubara	DE. N. Matsubara
31 JAN 94	31 JAN 94
1 FEB 94	1 FEB 94

(NAME)	(GENERAL TOLERANCE)	SIZE	LOC	(No.)
WIRE TO WIRE TAB HSG FOR DYNAMIC D-3200S PANEL MOUNT TYPE	K10: ±0.2 K10.50: ±0.25 K10.3: ±0.3	A3	J	179553



TE Connectivity

H	REVISED	H.U.N.Y.	24 APR 12
G	REVISED PER ECR-11-012413	T.T.M.	16 JUN 11
LTR	(REVISION RECORD)	DR	CHK

DR.	31 JAN 94
DE.	31 JAN 94
APP.	1 FEB 94

SCALE)	REV.	SHEET
2/1	H	1 OF 1

## X-ON Electronics

Largest Supplier of Electrical and Electronic Components

*Click to view similar products for [Headers & Wire Housings](#) category:*

*Click to view products by [TE Connectivity](#) manufacturer:*

Other Similar products are found below :

[892-18-020-10-001101](#) [58102-G61-06LF](#) [582553-1](#) [0009485154](#) [009176003701906](#) [0050291907](#) [LY20-4P-DT1-P1E-BR](#) [02.125.8002.8](#)  
[609-3404](#) [61062-3](#) [61082-181009](#) [622-3653LF](#) [63453-116](#) [636-1030](#) [636-1427](#) [636-3427](#) [636-4007](#) [641938-9](#) [641991-4](#) [644827-2](#) [65817-](#)  
[010LF](#) [65817-015LF](#) [65863-015LF](#) [66207-023LF](#) [67095-007LF](#) [67601157](#) [68645-018](#) [68648-049](#) [70.362.1628.0](#) [70-4210](#) [70-4226B](#) [70-](#)  
[4853B](#) [707-5020](#) [707-5028](#) [71.350.2428.0](#) [71918-208LF](#) [71961-016LF](#) [733-134](#) [733-162](#) [754199-000](#) [760-3052](#) [79531-3000](#) [FCN-](#)  
[360C032-B](#) [FCN-367T-T012/H](#) [FCN-723D010/2](#) [80.063.4001.1](#) [800-90-001-10-001000](#) [800-90-010-10-002000](#) [801-43-002-10-013000](#)  
[801-43-006-10-002000](#)