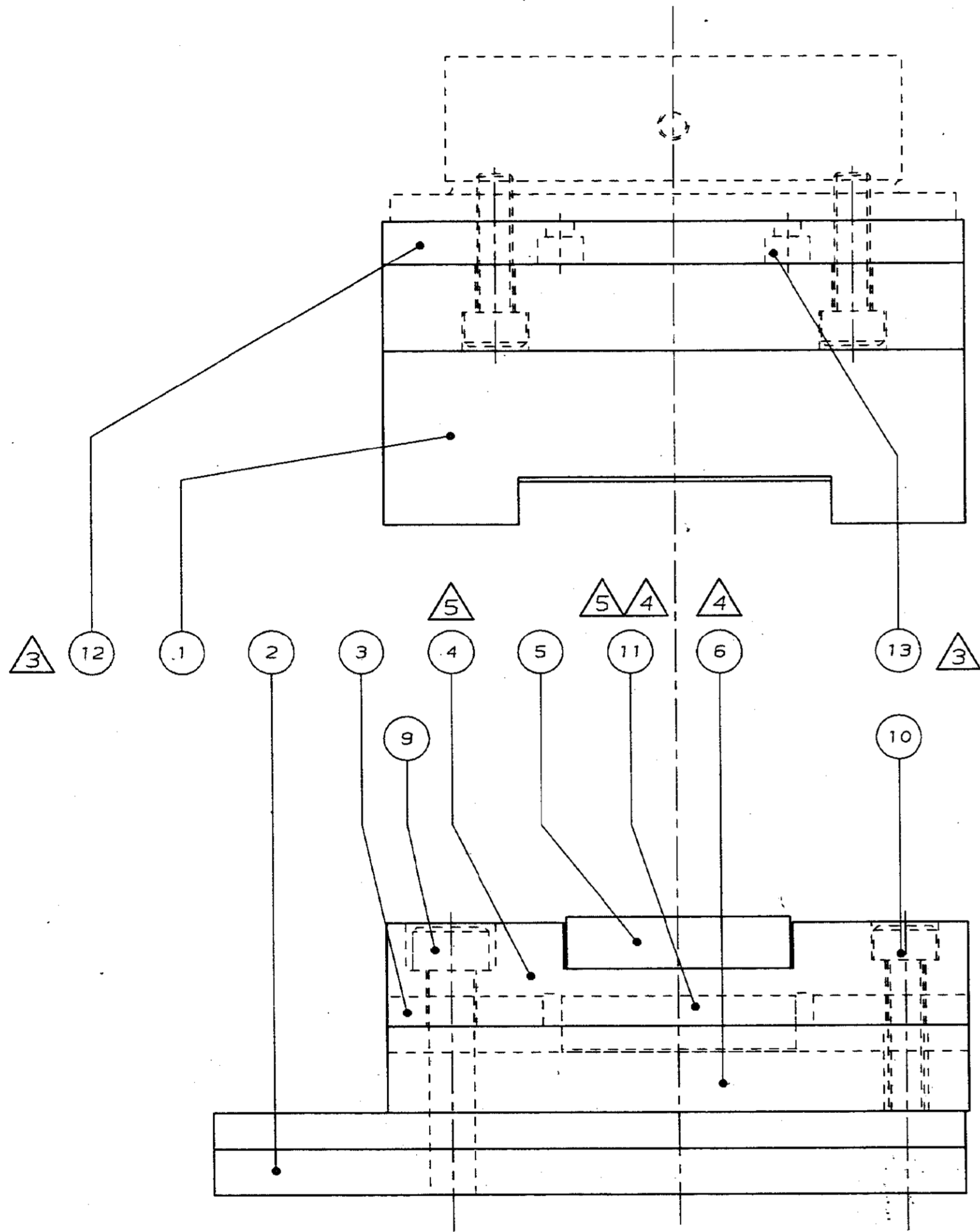


USED ON

SHOW PART NR. IN AREA MARKED X
(INCLUDE DASH NR. & REVISION LTR.)

THIS INFORMATION IS CONFIDENTIAL AND IS DISCLOSED
TO YOU ON CONDITION THAT NO FURTHER DISCLOSURE IS
MADE BY YOU TO OTHER THAN AMP PERSONNEL WITHOUT
WRITTEN AUTHORIZATION FROM AMP-HOLLAND B.V.

DIST



NOTE:

- △1 TOOL 733278-1 ONLY SUITABLE FOR USE UNDER "HBG" PRESSES, AND "MALE-ON-WIRE" MINI-MATCH CONNECTORS.
THIS TOOL IS SUPERSEDED BY PN. 733278-2.
- △2 TOOL 733278-2 MAY BE USED UNDER AMP-PRESSES PN. 91085-2, 91112-3 AND GERMAN PRESS PN. 654173-2.
THIS TOOL IS SUITABLE FOR BOTH "MALE-ON-WIRE" AND "PADDLE BOARD", MINI-MATCH CONNECTORS.
- △3 WITH INTRODUCTIN OF "SPACER TOOLHOLDER" (12) PN. 733900-1, PRESS MODIFICATIONS ARE NOT NEEDED.
- △4 PRESS FIT ITEM (11) INTO ITEM (6) WITH CHAMFERS DOWNWARDS.
- △5 ITEM (11) MUST BE SYMETRICAL WITHIN 0,03 TO SLOTTING DIM. 25,6 ^{+0,02} OF ITEM (4) WHEN ASSEMBLED.

| | | | | | | |
|---|---|-------------|-----------|---|--|----------|
| △2 | △1 | | | | | |
| SUPERSEDED BY -2 | | | | | | |
| 2 | - | A4 | 1-21000-7 | SCR SOC HD #4-40UNC | △3 13 | |
| 1 | - | A4 | 733900-1 | SPACER TOOLHOLDER | △3 12 | |
| 1 | - | A4 | 733888-1 | SUPPORT (PADDLE B. CONN.) | 11 | |
| 8 | 8 | A4 | 1-18023-3 | SOC. HD. CAP SCR. M4x16 | 10 | |
| 4 | 4 | A4 | 2-18023-4 | SOC. HD. CAP SCR. M5x40 | 9 | |
| 4 | 4 | A4 | 18027-3 | WASHER M5 | 8 | |
| 4 | 4 | A4 | 18029-3 | NUT HEX M5 | 7 | |
| 1 | 1 | A3 | 733282-1 | BASE PLATE | 6 | |
| 1 | 1 | A4 | 733672-1 | CABLE STOP | 5 | |
| 1 | 1 | A2 | 733281-1 | LOWERTOOL | 4 | |
| 1 | 1 | A3 | 733535-1 | WIRE-SUPPORT | 3 | |
| 1 | 1 | A3 | 733536-1 | SLIDE | 2 | |
| 1 | 1 | A3 | 733279-1 | UPPERTOOL | 1 | |
| -2 | -1 | DWG SIZE | PART NO | DESCRIPTION | ITEM NO | |
| | | | | MATERIAL W.St. n°. # | HEAT TREAT # | FINISH # |
| | | | | DIMENSIONS IN MM REQD. 1 | | |
| | | | | UNLESS .0 ± 0.1 ANGLES ± 0°30' REMOVE BURRS ✓ | | |
| | | | | OTHERWISE .00 ± 0.025 CAD ORIGINAL | | |
| | | | | SPECIFIED .000 ± 0.005 DO NOT CHANGE DWG | | |
| AMP AMP-HOLLAND B.V. 's-Hertogenbosch, The Netherlands | | | | | | |
| F | ADDED PART NO -2 | NL-1155 | AL | 20-1-88 | DR P. van Tongeren 1-7-86 FIRST USED ASSY 733280 | |
| E | UPDATED DWG. | ECN NL-1115 | AL | 31-8-87 | | |
| LTR | REVISION RECORD | APP | DATE | CHK | SHEET 1 OF 1 | |
| NAME | SUB-ASSY TOOL SET FOR Micro-Match connector | | SCALE | LOC | SIZE | NO |
| | | | 2:1 | H | A2 | 733278 |
| | | | | | | REV F |

X-ON Electronics

Largest Supplier of Electrical and Electronic Components

Click to view similar products for [Bench Top Tools](#) category:

Click to view products by [TE Connectivity](#) manufacturer:

Other Similar products are found below :

[63801-7271](#) [5-690451-2](#) [570416-000](#) [59737-3](#) [6-1372442-6](#) [6-21084-7](#) [6-2119582-2](#) [63801-4462](#) [63801-7269](#) [639029070](#) [679527-1](#) [68284-1](#) [690223-2](#) [691530-1](#) [7-18023-8](#) [768514-1](#) [768539-1](#) [768597-1](#) [809696-1](#) [810408](#) [811070-1](#) [819347-1](#) [852772-1](#) [853858-1](#) [854130-1](#) [854178-1](#) [854946-1](#) [854946-2](#) [856189-1](#) [904262-1](#) [904449-1](#) [9-1633962-3](#) [9-1633962-4](#) [9-1633962-5](#) [9-22279-4](#) [9-22280-9](#) [970609-000](#) [986096-2](#) [1-1901695-2](#) [1-1901696-2](#) [992438-3](#) [1-1976053-3](#) [1-2119644-2](#) [1-2119644-3](#) [1-2119791-1](#) [1-25022-4](#) [125327-000](#) [122760-1](#) [1-23470-5](#) [126379-1](#)