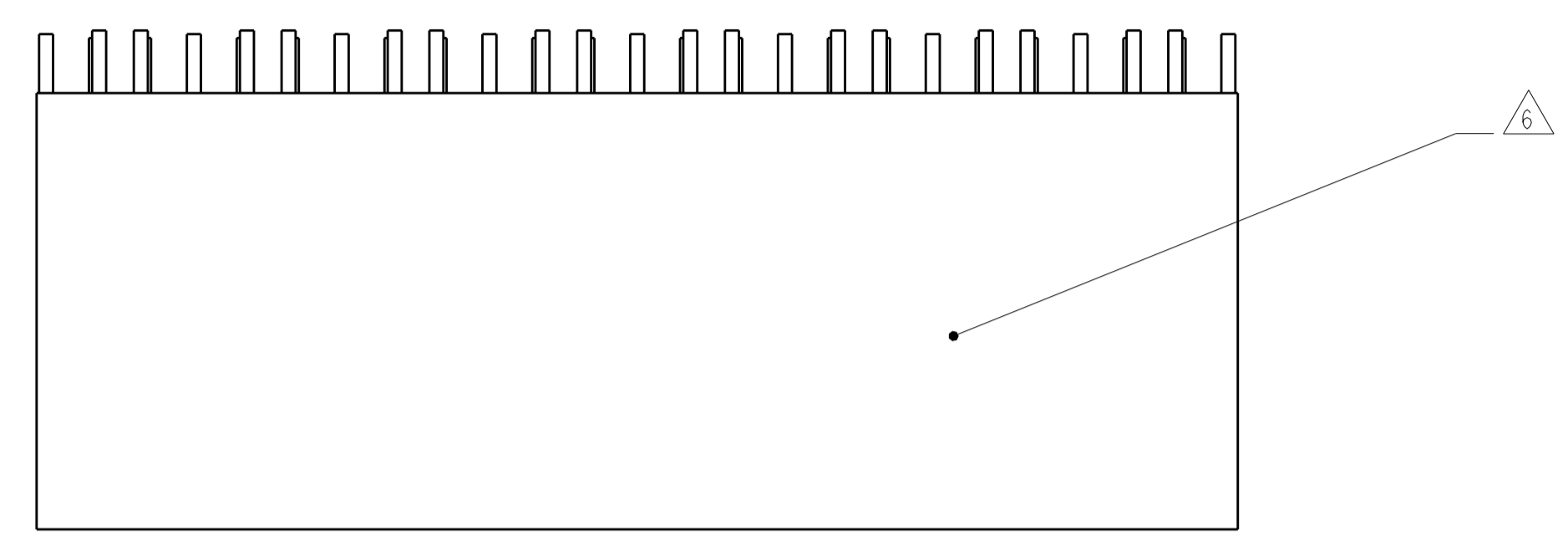
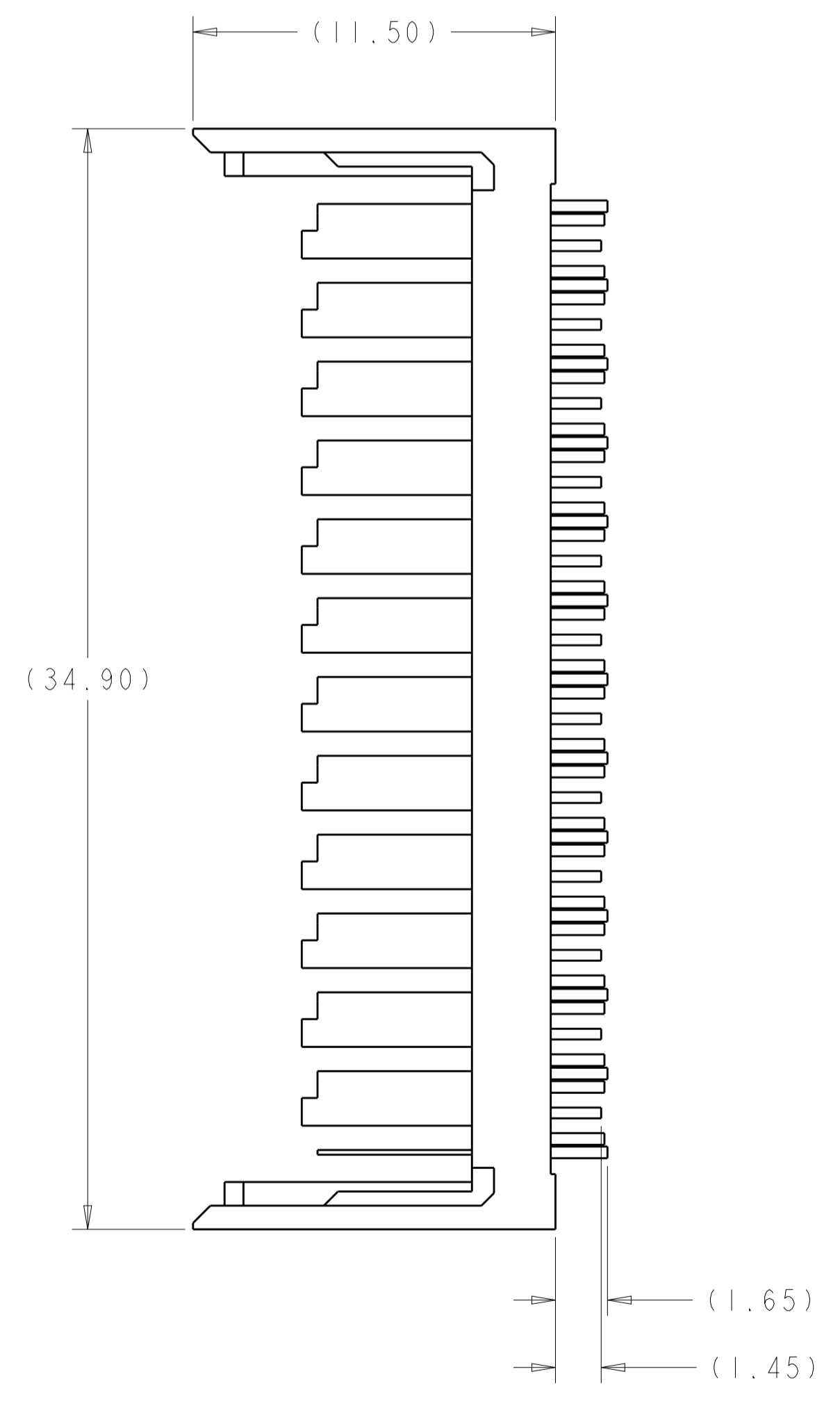
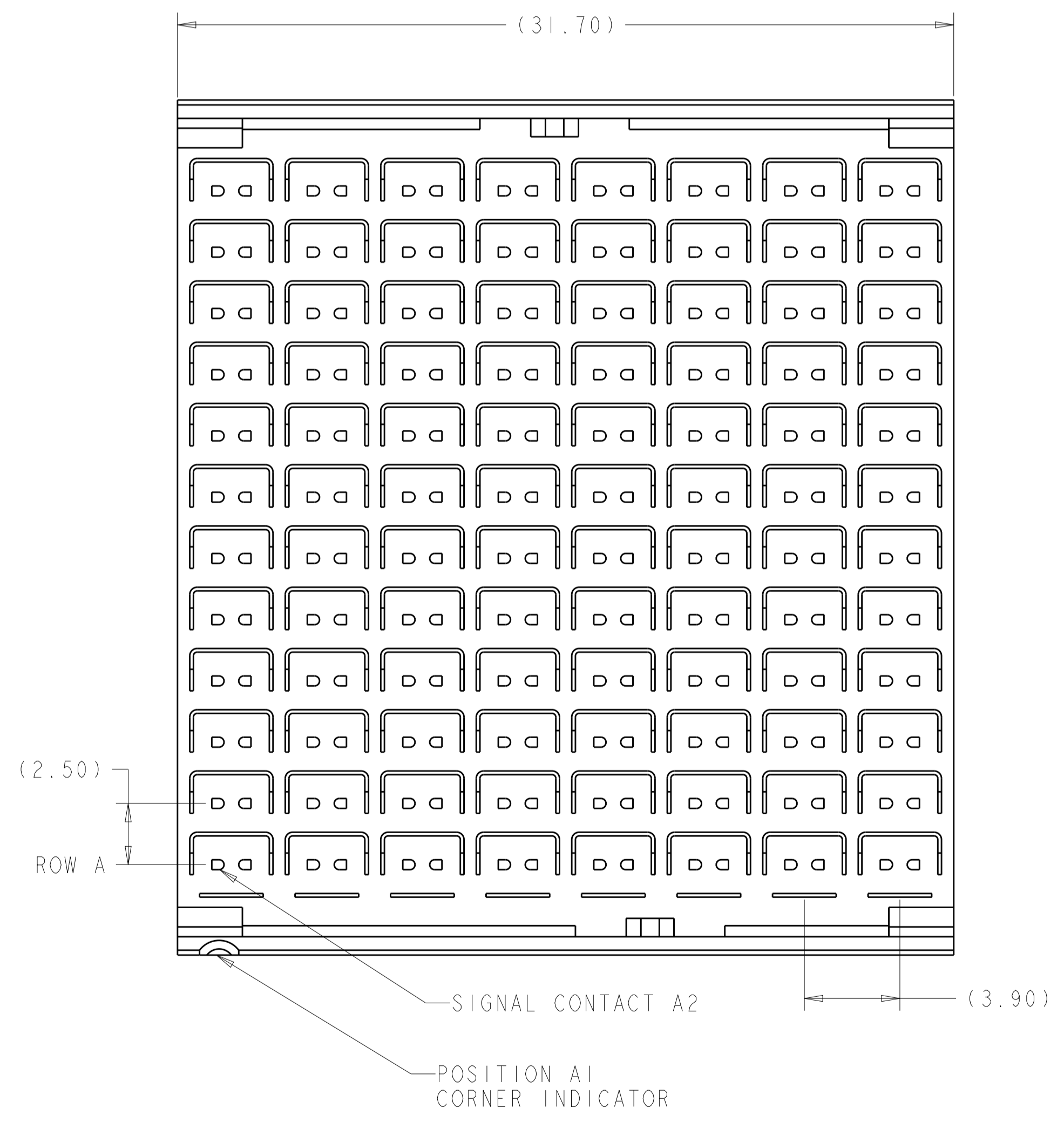


REVISIONS				
P.	LTN	DESCRIPTION	DATE	APV'D
A		REVISED PER ECO-16-000464	09MAR2016	AP RP
B		REVISED PER ECO-17-003153	14MAR2017	AP RP
C		REVISED PER ECO-19-004494	25MAR2019	AP RP



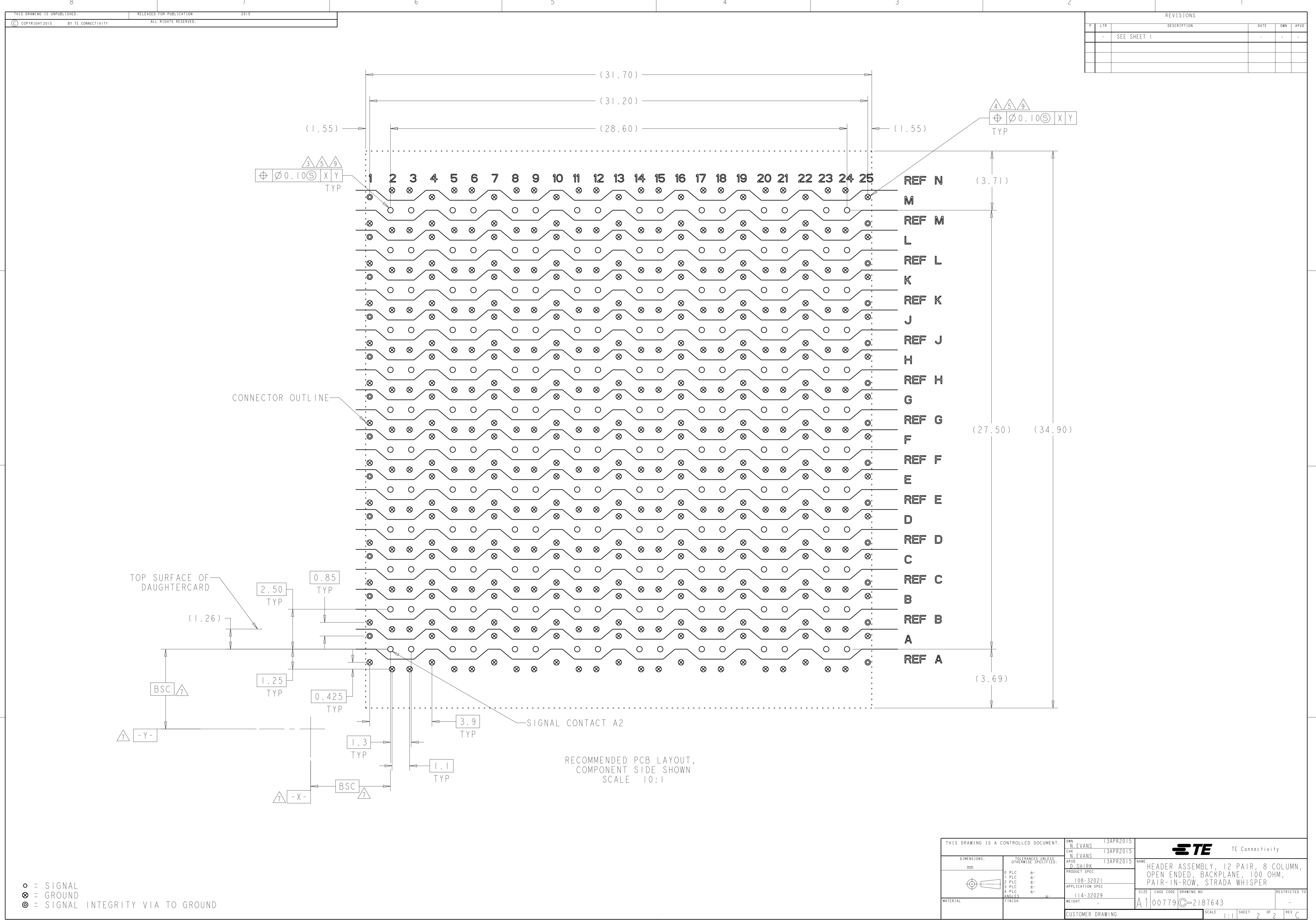
- △ MATERIAL:  
HOUSING: THERMOPLASTIC, UL 94V-0, BLACK  
CONTACTS AND SHIELDS: COPPER ALLOY
- △ FINISH:  
- CONFORMS TO THE REQUIREMENTS OF TE PRODUCT SPECIFICATION 108-32021 BASED ON TELCORDIA GR-1217-CORE FOR SYSTEM QUALITY LEVEL III, APPLICATIONS IN CONTROLLED ENVIRONMENTS (CENTRAL OFFICE).  
- COMPLIANT PIN AREA: 0.5µm MIN MATTE TIN.
- △ SIGNAL PLATED THRU HOLE REQUIREMENTS:  
FINISHED HOLE =  $\varnothing 0.34 \pm 0.05$   
HOLE SIZE PRIOR TO PLATING =  $\varnothing 0.420 \pm 0.025$   
COPPER THICKNESS = 0.025 MIN  
IMMERSION TIN IF APPLICABLE = 0.00095 REF
- △ GROUND AND SI VIA PLATED THRU HOLE REQUIREMENTS:  
FINISHED HOLE =  $\varnothing 0.37 \pm 0.05$   
HOLE SIZE PRIOR TO PLATING =  $\varnothing 0.450 \pm 0.025$   
COPPER THICKNESS = 0.025 MIN  
IMMERSION TIN IF APPLICABLE = 0.00095 REF
- △ PTH DIMENSIONS APPLY TO THE TOP 1.00mm OF THE PCB THICKNESS FROM THE CONNECTOR MOUNTING SIDE.
- △ CONNECTOR MARKED WITH PART NUMBER, DATE CODE, AND "100 OHM" IN APPROXIMATE AREA SHOWN.
- △ DATUMS AND BASIC DIMENSIONS ESTABLISHED BY CUSTOMER.
- 8. CONTACT PRODUCT ENGINEERING FOR LAYOUTS WHEN STACKING CONNECTORS.
- △ APPLIES TO FINISHED HOLE DIAMETER.
- △ PACKAGED IN TRAYS.



△	2187643-2
-	2187643-1
REMARKS	PART NO

THIS DRAWING IS A CONTROLLED DOCUMENT.		OWN: N. EVANS 13APR2015	
DIMENSIONS: mm		CHK: N. EVANS 13APR2015	
TOLERANCES UNLESS OTHERWISE SPECIFIED:		APV'D: D. SHIRK 13APR2015	
0 PLC ± 1 PLC ± 2 PLC ± 3 PLC ± 4 PLC ± ANGLES ± FINISH ±		NAME: HEADER ASSEMBLY, 12 PAIR, 8 COLUMN, OPEN ENDED, BACKPLANE, 100 OHM, PAIR-IN-ROW, STRADA WHISPER PRODUCT SPEC: 108-32021 APPLICATION SPEC: 114-32029 WEIGHT: - CUSTOMER DRAWING	
MATERIAL: △		FINISH: △	SIZE: A1 CAGE CODE: 00779 DRAWING NO: C=2187643 SCALE: 6:1 SHEET: 1 OF 2 REV: C

REVISIONS				
P.	LTN	DESCRIPTION	DATE	APVD
-	-	SEE SHEET 1	-	-



THIS DRAWING IS A CONTROLLED DOCUMENT.		OWN: N. EVANS 13APR2015	TE Connectivity
DIMENSIONS: mm		CHK: N. EVANS 13APR2015	
TOLERANCES UNLESS OTHERWISE SPECIFIED:		APVD: D. SHIRK 13APR2015	NAME: HEADER ASSEMBLY, 12 PAIR, 8 COLUMN, OPEN ENDED, BACKPLANE, 100 OHM, PAIR-IN-ROW, STRADA WHISPER
0 PLC ±	1 PLC ±	PRODUCT SPEC: 108-32021	SIZE: A1
2 PLC ±	3 PLC ±	APPLICATION SPEC: 114-32029	CAGE CODE: 00779
4 PLC ±	ANGLES ±	WEIGHT: -	DRAWING NO: 2187643
MATERIAL: -	FINISH: -	CUSTOMER DRAWING	SCALE: 1:1 SHEET 2 OF 2 REV C

## X-ON Electronics

Largest Supplier of Electrical and Electronic Components

*Click to view similar products for [Headers & Wire Housings](#) category:*

*Click to view products by [TE Connectivity](#) manufacturer:*

Other Similar products are found below :

[892-18-020-10-001101](#) [58102-G61-06LF](#) [582553-1](#) [0009485154](#) [009176003701906](#) [0050291907](#) [LY20-4P-DT1-P1E-BR](#) [02.125.8002.8](#)  
[609-3404](#) [61062-3](#) [61082-181009](#) [622-3653LF](#) [63453-116](#) [636-1030](#) [636-1427](#) [636-3427](#) [636-4007](#) [641938-9](#) [641991-4](#) [644827-2](#) [65817-](#)  
[010LF](#) [65817-015LF](#) [65863-015LF](#) [66207-023LF](#) [67095-007LF](#) [67601157](#) [68645-018](#) [68648-049](#) [70.362.1628.0](#) [70-4210](#) [70-4226B](#) [70-](#)  
[4853B](#) [707-5020](#) [707-5028](#) [71.350.2428.0](#) [71918-208LF](#) [71961-016LF](#) [733-134](#) [733-162](#) [754199-000](#) [760-3052](#) [79531-3000](#) [FCN-](#)  
[360C032-B](#) [FCN-367T-T012/H](#) [FCN-723D010/2](#) [80.063.4001.1](#) [800-90-001-10-001000](#) [800-90-010-10-002000](#) [801-43-002-10-013000](#)  
[801-43-006-10-002000](#)