

THIS DRAWING IS UNPUBLISHED.

RELEASED FOR PUBLICATION

© COPYRIGHT - TE Connectivity Ltd.

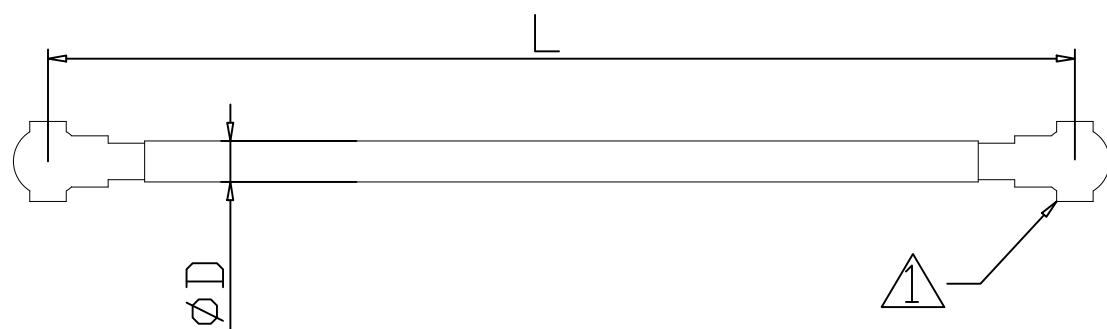
ALL RIGHTS RESERVED.

REVISIONS

P	LTR	DESCRIPTION	DATE	DWN	APVD
	A	INITIAL CREATED	6JUN2019	CL	RS

NOTES:

- CONNECTOR: IPEX, 20278-112R-32
- PRODUCT AND PROCESSING MUST MEET REQUIREMENTS OF TE CONNECTIVITY STANDARD TE-138-702 AND MUST BE HALOGEN FREE ELEMENTS.
- PRODUCT RATE:  
 TEMPERATURE RATE: -40°C~+85°C  
 DURABILITY(MATING CYCLES): NO LESS THAN 30  
 IMPEDANCE: 50 OHM NORMAL  
 FREQUENCY RANGE: DC~6GHz  
 VSWR: 2.0 MAX @DC~6GHz  
 INSERTION LOSS: (4.9\*LENGTH+0.4)dB MAX @6GHz



TE PART \*-2195633-\* AS SHOWN

NONE, 1, 2, 3, 4: TE PACKED PART  
5, 6, 7, 8, 9: CABLE ASSEMBLY PART

1-2195633-1	6-2195633-1	1.32±0.05	150±3	WHITE
1-2195633-0	5-2195633-0	1.32±0.05	70±2	BLACK
2195633-9	5-2195633-9	1.32±0.05	200±3	WHITE
2195633-8	5-2195633-8	1.32±0.05	100±2	WHITE
2195633-7	5-2195633-7	1.32±0.05	50±2	WHITE
2195633-6	5-2195633-6	1.32±0.05	200±3	GRAY
2195633-5	5-2195633-5	1.32±0.05	100±2	GRAY
2195633-4	5-2195633-4	1.32±0.05	50±2	GRAY
2195633-3	5-2195633-3	1.32±0.05	200±3	BLACK
2195633-2	5-2195633-2	1.32±0.05	100±2	BLACK
2195633-1	5-2195633-1	1.32±0.05	50±2	BLACK
TE PACKED P/N	CABLE ASS. P/N	DIM. D (DIA.)	DIM. L (LENGTH)	CABLE COLOR

THIS DRAWING IS A CONTROLLED DOCUMENT.		DWN ARES HUANG 22DEC16	<b>STE</b> TE Connectivity		
		CHK BILL WU 22DEC16			
DIMENSIONS: mm [INCHES]		APVD RICHARD GONG 22DEC16	NAME IPEX 20278 WITH Dia. 1.32 CABLE		
TOLERANCES UNLESS OTHERWISE SPECIFIED: 0 PLC ± - 1 PLC ± 0.2 2 PLC ± 0.1 3 PLC ± 0.05 4 PLC ± - ANGLES ± 0.5°		PRODUCT SPEC -	-		
MATERIAL -		FINISH -	APPLICATION SPEC -	SIZE A3	RESTRICTED TO -
		WEIGHT 0	CAGE CODE 00779	DRAWING NO C-2195633	
CUSTOMER DRAWING			SCALE 1:1	SHEET 1 OF 1	REV A

## X-ON Electronics

Largest Supplier of Electrical and Electronic Components

*Click to view similar products for [RF Cable Assemblies](#) category:*

*Click to view products by [TE Connectivity](#) manufacturer:*

Other Similar products are found below :

[73-6352-10](#) [73-6353-3](#) [73-6364-6](#) [R285001001](#) [R288940004](#) [145111-05-12.00](#) [1661-C-24](#) [1801171170914KE](#) [24P104C24J1-012](#)  
[24P104C24P1-006](#) [24P104C24P1-018](#) [24P204C24J1-003](#) [172-2150-EX](#) [1800920920914PJ](#) [FCB-3030-ALT](#) [21117-046](#) [21117-050](#) [PCX-24-](#)  
[50](#) [24P103C24P2-003](#) [25P203C25P2-003](#) [R284008001](#) [R285001021](#) [R285426000](#) [R288940003](#) [4814-BB-24](#) [5260-72](#) [JT2N1-CL1-1F](#) [DLP-](#)  
[COAX1](#) [4814-K-48](#) [115101-09-06.00](#) [MXHT83QE3000](#) [CCNTN2-MM-LL335-26](#) [73-6351-25](#) [73-6352-3](#) [73-6353-25](#) [1800920920610PJ](#)  
[GD0BQ0BQ024.0](#) [1-3636-600-5210](#) [TL8A-11SMA-11SMA-01500-51](#) [R284C0351060](#) [R288940009](#) [R284C0351028](#) [R288940002](#) [9702-](#)  
[1SL-1](#) [PT82NSMA](#) [73-6353-10](#) [R285020301W](#) [PCX-18-50](#) [Minibend-9](#) [Minibend-4](#)