

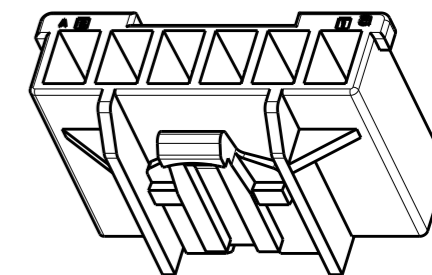
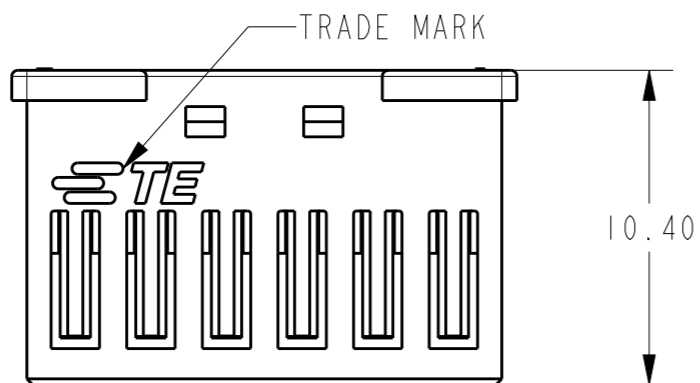
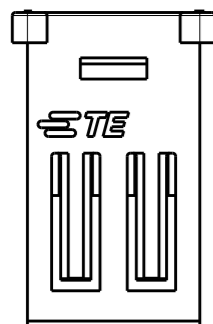
THIS DRAWING IS UNPUBLISHED. RELEASED FOR PUBLICATION

© COPYRIGHT - BY - TE CONNECTIVITY ALL RIGHTS RESERVED.

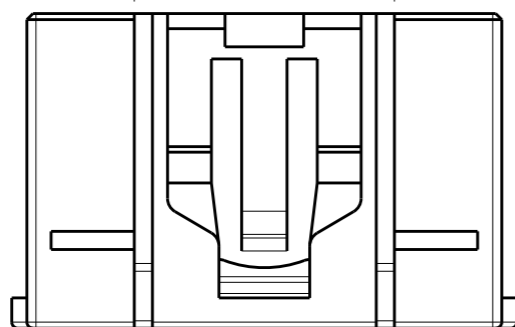
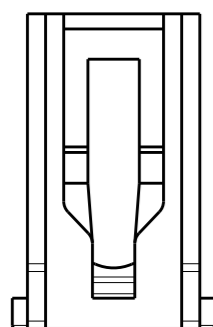
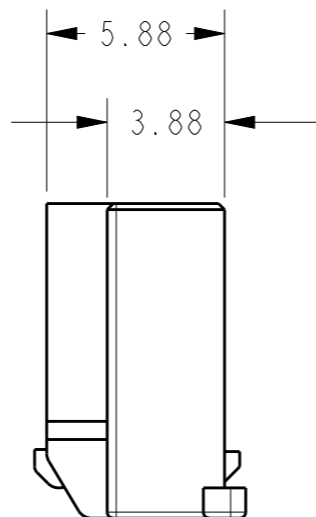
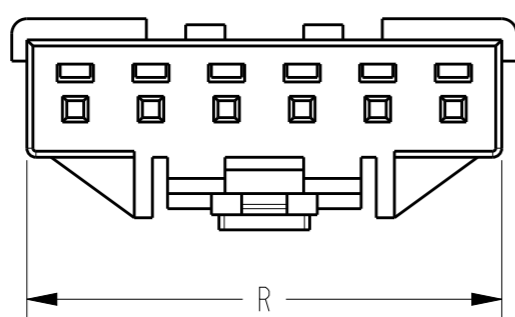
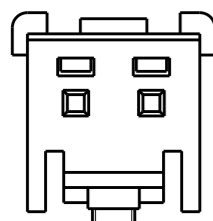
LOC	DIST	REVISIONS					
		P	LTR	DESCRIPTION	DATE	DWN	APVD
-	-		A	INITIAL	13APR2012	ZHJ	E. K
			A2	UPDATE FOR ERGONOMIC FEATURE	19SEP2012	HJ. Z	YH. M

(2 POS.)

(6 POS.)

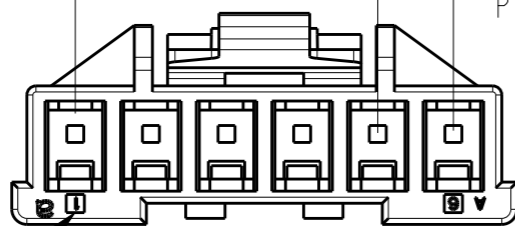
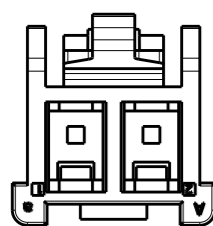


- Notes:
- 1 GENERAL TOLERANCE $\pm 0.3, \pm 3^\circ$
 - 2 MATERIAL: PA66 GF(UL94V-0)
 - 3 MATING CONN. P/N: SEE TABLE
 - 4 APPLICABLE CONTACT P/N: 1971795-1



MATING CONN P/N	COLOR	KEYING	R	M	P	N(POS.)	PART NO.
8-1971798-X	YELLOW	D	20.7	17.5	10.2	8	8-1971793-4
	RED	C					8-1971793-3
	BLUE	B					8-1971793-2
	NATURAL	A					8-1971793-1
6-1971798-X	YELLOW	D	15.7	12.5	8.6	6	6-1971793-4
	RED	C					6-1971793-3
	BLUE	B					6-1971793-2
	NATURAL	A					6-1971793-1
5-1971798-X	YELLOW	D	13.2	10	8.6	5	5-1971793-4
	RED	C					5-1971793-3
	BLUE	B					5-1971793-2
	NATURAL	A					5-1971793-1
3-1971798-X	YELLOW	D	8.2	5	6.2	3	3-1971793-4
	RED	C					3-1971793-3
	BLUE	B					3-1971793-2
	NATURAL	A					3-1971793-1
2-1971798-X	YELLOW	D	5.7	2.5	5.7	2	2-1971793-4
	RED	C					2-1971793-3
	BLUE	B					2-1971793-2
	NATURAL	A					2-1971793-1

M=2.5X(N-1)
2.50 Pitch



CIRCUIT NO. 1

THIS DRAWING IS A CONTROLLED DOCUMENT.

DWN HJ.Z 19SEP2012
CHK HJ.Z 19SEP2012
APVD YH.M 19SEP2012

PRODUCT SPEC 108-106077
APPLICATION SPEC

WEIGHT -

Customer Drawing

SCALE / SHEET 1 OF 1 REV A2

STE TE Connectivity

NAME: NEXT GENERATION GRACE INERTIA CONNECTOR 2.5 PLUG HOUSING

SIZE: A3 CAGE CODE: - DRAWING NO: C-C-1971793 RESTRICTED TO: -

X-ON Electronics

Largest Supplier of Electrical and Electronic Components

Click to view similar products for [Headers & Wire Housings](#) category:

Click to view products by [TE Connectivity](#) manufacturer:

Other Similar products are found below :

[892-18-020-10-001101](#) [58102-G61-06LF](#) [582553-1](#) [0009485154](#) [009176003701906](#) [0050291907](#) [LY20-4P-DT1-P1E-BR](#) [02.125.8002.8](#)
[609-3404](#) [61062-3](#) [61082-181009](#) [622-3653LF](#) [63453-116](#) [636-1030](#) [636-1427](#) [636-3427](#) [636-4007](#) [641938-9](#) [641991-4](#) [644827-2](#) [65817-](#)
[010LF](#) [65817-015LF](#) [65863-015LF](#) [66207-023LF](#) [67095-007LF](#) [67601157](#) [68645-018](#) [68648-049](#) [70.362.1628.0](#) [70-4210](#) [70-4226B](#) [70-](#)
[4853B](#) [707-5020](#) [707-5028](#) [71.350.2428.0](#) [71918-208LF](#) [71961-016LF](#) [733-134](#) [733-162](#) [754199-000](#) [760-3052](#) [787-8014-00](#) [79531-3000](#)
[FCN-360C032-B](#) [FCN-367T-T012/H](#) [FCN-723D010/2](#) [80.063.4001.1](#) [800-90-001-10-001000](#) [800-90-010-10-002000](#) [801-43-002-10-013000](#)