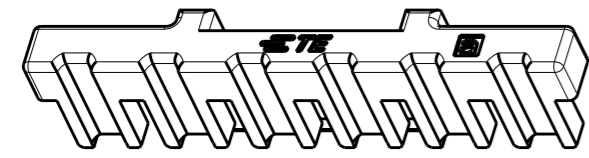
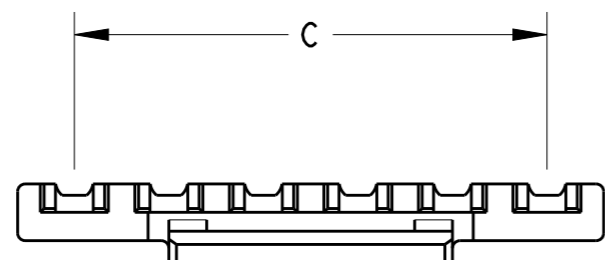
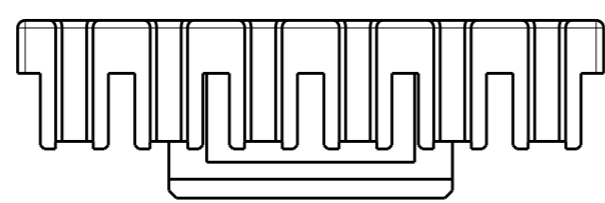
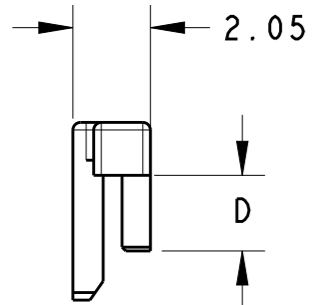
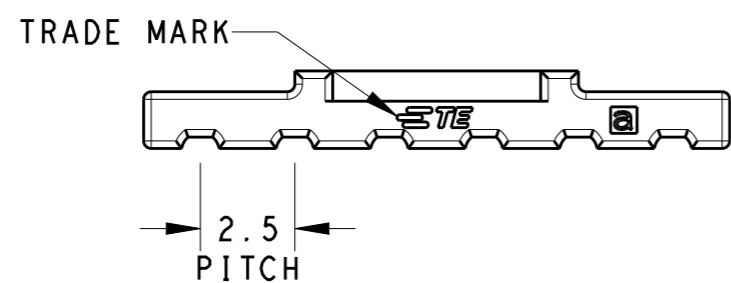
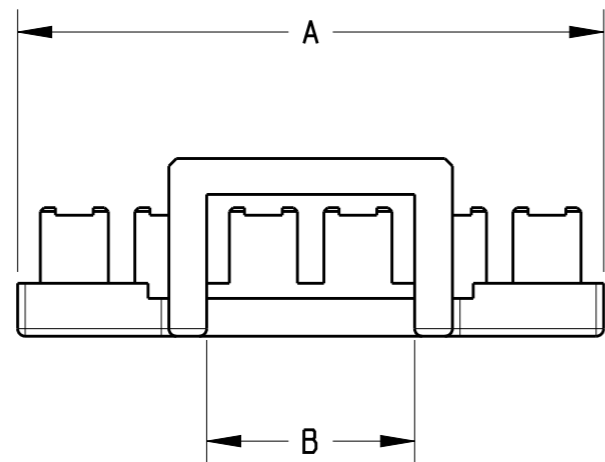


THIS DRAWING IS UNPUBLISHED. RELEASED FOR PUBLICATION
 © COPYRIGHT BY - TE CONNECTIVITY ALL RIGHTS RESERVED.

LOC	DIST	REVISIONS					
-	-	P	LTR	DESCRIPTION	DATE	DWN	APVD
		A		INITIAL RELEASE	21FEB2012	ZHJ	E. K
		B		ADD 4P/7P PRODUCT	28MAY2013	HJ. Z	YH. M
		B1		ADD NEW PARTS PER ECR-18-000590	28MAY2018	C. X	D. Z



*The part is assembled with plug housing: X-1971793-X

1.8	17.5	8.4	20.5	8	8-1971794-2
1.8	15	8.4	18	7	7-1971794-2
1.8	12.5	5.5	15.5	6	6-1971794-2
1.8	10	3.3	13	5	5-1971794-2
1.8	7.5	3.7	10.5	4	4-1971794-2
1.8	5	2.5	8	3	3-1971794-2
1.8	2.5	2.4	5.5	2	2-1971794-2
2.0	17.5	8.4	20.5	8	8-1971794-1
2.0	15	8.4	18	7	7-1971794-1
2.0	12.5	5.5	15.5	6	6-1971794-1
2.0	10	3.3	13	5	5-1971794-1
2.0	7.5	3.7	10.5	4	4-1971794-1
2.0	5	2.5	8	3	3-1971794-1
2.0	2.5	2.4	5.5	2	2-1971794-1
D	C	B	A	POS	P / N

THIS DRAWING IS A CONTROLLED DOCUMENT.		DWN HJ. M 28MAY2013	TE Connectivity				
DIMENSIONS: mm		CHK HJ. M 28MAY2013					
TOLERANCES UNLESS OTHERWISE SPECIFIED:		APVD HJ. M 28MAY2013					
0 PLC ±- 1 PLC ±0.3 2 PLC ±0.13 3 PLC ±0.013 4 PLC ±0.0001 ANGLES ±-		NAME TPA, 2.5 PITCH NEXT GENERATION GI CONNECTOR					
MATERIAL PA66 GF		PRODUCT SPEC 108-106077	APPLICATION SPEC -	SIZE A3	CAGE CODE -	DRAWING NO C-1971794	RESTRICTED TO -
FINISH -		WEIGHT -	Customer Drawing		SCALE 5:1	SHEET 1 OF 1	REV B1

X-ON Electronics

Largest Supplier of Electrical and Electronic Components

Click to view similar products for [Headers & Wire Housings](#) category:

Click to view products by [TE Connectivity](#) manufacturer:

Other Similar products are found below :

[892-18-020-10-001101](#) [58102-G61-06LF](#) [582553-1](#) [0009485154](#) [009176003701906](#) [0050291907](#) [LY20-4P-DT1-P1E-BR](#) [02.125.8002.8](#)
[609-3404](#) [61062-3](#) [61082-181009](#) [622-3653LF](#) [63453-116](#) [636-1030](#) [636-1427](#) [636-3427](#) [636-4007](#) [641938-9](#) [641991-4](#) [644827-2](#) [65817-](#)
[010LF](#) [65817-015LF](#) [65863-015LF](#) [66207-023LF](#) [67095-007LF](#) [67601157](#) [68645-018](#) [68648-049](#) [70.362.1628.0](#) [70-4210](#) [70-4226B](#) [70-](#)
[4853B](#) [707-5020](#) [707-5028](#) [71.350.2428.0](#) [71918-208LF](#) [71961-016LF](#) [733-134](#) [733-162](#) [754199-000](#) [760-3052](#) [79531-3000](#) [FCN-](#)
[360C032-B](#) [FCN-367T-T012/H](#) [FCN-723D010/2](#) [80.063.4001.1](#) [800-90-010-10-002000](#) [801-43-002-10-013000](#) [801-43-006-10-002000](#)
[801-93-011-10-001000](#)