

4

3

2

1

THIS DRAWING IS UNPUBLISHED.

RELEASED FOR PUBLICATION

2011

© COPYRIGHT 2011

ALL RIGHTS RESERVED.

LOC
FT 0DIST
0

REVISIONS

P	LTR	DESCRIPTION	DATE	DWN	APVD
	C	PLATING INFORMATION ADDED	16JUL2019	RK	PS

TERMINAL PLATE

1.50

5.00

"L"

0.50

1.25

0.50

2.50

14.80

11.80

(14.45)

3.30

0.80

5.00

SCALE 2:1
-4 AS SHOWN

5	SEE FIG			
46.50	9	2-1986711-6		
126.50	25	2-1986711-5		
121.50	24	2-1986711-4		
116.50	23	2-1986711-3		
111.50	22	2-1986711-2		
106.50	21	2-1986711-1		
101.50	20	2-1986711-0		
96.50	19	1-1986711-9		
91.50	18	1-1986711-8		
86.50	17	1-1986711-7		
81.50	16	1-1986711-6		
76.50	15	1-1986711-5		
71.50	14	1-1986711-4		
66.50	13	1-1986711-3		
61.50	12	1-1986711-2		
56.50	11	1-1986711-1		
51.50	10	1-1986711-0		
46.50	9	1986711-9		
41.50	8	1986711-8		
36.50	7	1986711-7		
31.50	6	1986711-6		
26.50	5	1986711-5		
21.50	4	1986711-4		
16.50	3	1986711-3		
11.50	2	1986711-2		
"L"	POLE	PART NO		

- MATERIAL:
HOUSING - PA66 , UL94 V0
CLAMPING SPRING - STAINLESS STEEL
PIN - COPPER ALLOY - BRIGHT TIN PLATED
- MECHANICAL:
MIN. PC BOARD HOLES DIAMETER : 1.2 mm
MAX. PC BOARD THICKNESS : 2.4 mm
WIRE STRIPPING LENGTH : 11.5 mm
- ELECTRICAL:
WIRE RANGE : 12-30 AWG
RATED VOLTAGE : 300V
RATED CURRENT : 16A
CONTACT RESISTANCE : <15 m Ohm
INSULATION RESISTANCE : >1000 M Ohm (500V DC)
- OPERATING TEMPERATURE RANGE : -40°C TO +105°C

5 PRELIMINARY PART

THIS DRAWING IS A CONTROLLED DOCUMENT.		DWN 08AUG2011 RAGHAVENDRA	TE Connectivity	
DIMENSIONS: mm		CHK 08AUG2011 SARVER MICHAEL		
TOLERANCES UNLESS OTHERWISE SPECIFIED:		APVD 08AUG2011 SARVER MICHAEL	NAME SPRING TYPE. SIDE WIRE ENTRY TERMINAL BLOCK SIDE STACKABLE STRAIGHT 02 - 25 POLES PITCH 5.00mm	
0 PLC ± 1 PLC ±0.5 2 PLC ±0.25 3 PLC ± 4 PLC ± ANGLES ±1°		PRODUCT SPEC	RESTRICTED TO	
MATERIAL SEE NOTES		FINISH SEE NOTES	WEIGHT -	SIZE A3
		CUSTOMER DRAWING	SCALE 4:1	CAGE CODE 00779
			DRAWING NO C-1986711	SHEET 1 OF 2
				REV C

2.50 PCB LAYOUT

2.50

PCB LAYOUT

5.00

5.00

5.00

5.00

1.00 ±0.20

1470-19 (3/11)

THIS DRAWING IS UNPUBLISHED.

RELEASED FOR PUBLICATION

2011

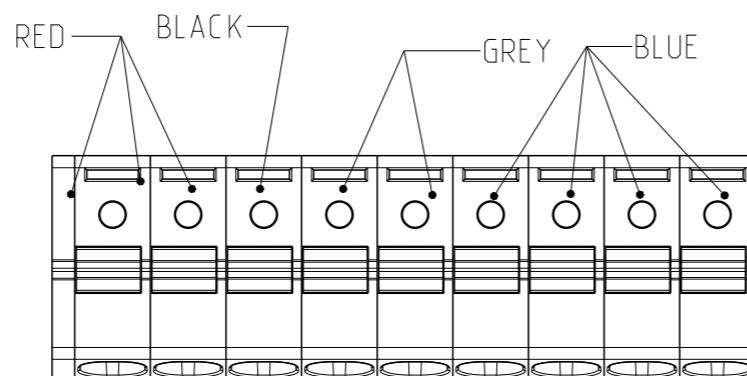
© COPYRIGHT 2011

ALL RIGHTS RESERVED.

LOC FT DIST 0

REVISIONS

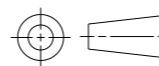
P	LTR	DESCRIPTION	DATE	DWN	APVD
	-	SEE SHEET 1	-	-	-



2-1986711-6

THIS DRAWING IS A CONTROLLED DOCUMENT.

DIMENSIONS: mm



TOLERANCES UNLESS OTHERWISE SPECIFIED:

- 0 PLC ±-
- 1 PLC ±0.5
- 2 PLC ±0.25
- 3 PLC ±-
- 4 PLC ±-
- ANGLES ±1°

MATERIAL SEE NOTES

FINISH SEE NOTES

DWN 08AUG2011 RAGHAVENDRA

CHK 08AUG2011 SARVER MICHAEL

APVD 08AUG2011 SARVER MICHAEL

PRODUCT SPEC -

APPLICATION SPEC -

WEIGHT -

CUSTOMER DRAWING



TE Connectivity

NAME: SPRING TYPE. SIDE WIRE ENTRY
 TERMINAL BLOCK SIDE STACKABLE
 STRAIGHT 02 - 25 POLES PITCH 5.00mm

SIZE: A3 CAGE CODE: 00779 DRAWING NO: C-1986711 RESTRICTED TO: -

SCALE: 4:1 SHEET: 2 OF 2 REV: C

X-ON Electronics

Largest Supplier of Electrical and Electronic Components

Click to view similar products for [Fixed Terminal Blocks](#) category:

Click to view products by [TE Connectivity](#) manufacturer:

Other Similar products are found below :

[MBE-1512](#) [MBE-154](#) [MBE-156](#) [MBES-153](#) [MBES-156](#) [MH-2512](#) [MHE-132](#) [MHE-163](#) [MI-254 \(35\)](#) [MI-272](#) [880507](#) [MPT-275](#)
[15602-04-08-21](#) [BA311TU](#) [BA411SU](#) [MV-152](#) [MV-252-D](#) [MV-253/NCNOC](#) [MV-254-D](#) [MV-255](#) [MV-462](#) [MV-493](#) [MVE-252](#) [MVE-253](#)
[MVE-273](#) [MVEB-153](#) [1700096](#) [1705142](#) [1712417](#) [1713020](#) [1713088](#) [1745195](#) [1760594](#) [1776118-2](#) [1790852](#) [1-796689-8](#) [1-796692-6](#)
[1800001](#) [1800114](#) [1995279](#) [20020314-C121B01LF](#) [20020316-G041B01LF](#) [CB2-12](#) [KP03215000J0G](#) [KP04215000J0G](#) [S451](#) [282802-2](#)
[29.007](#) [29.116](#) [30.103](#)