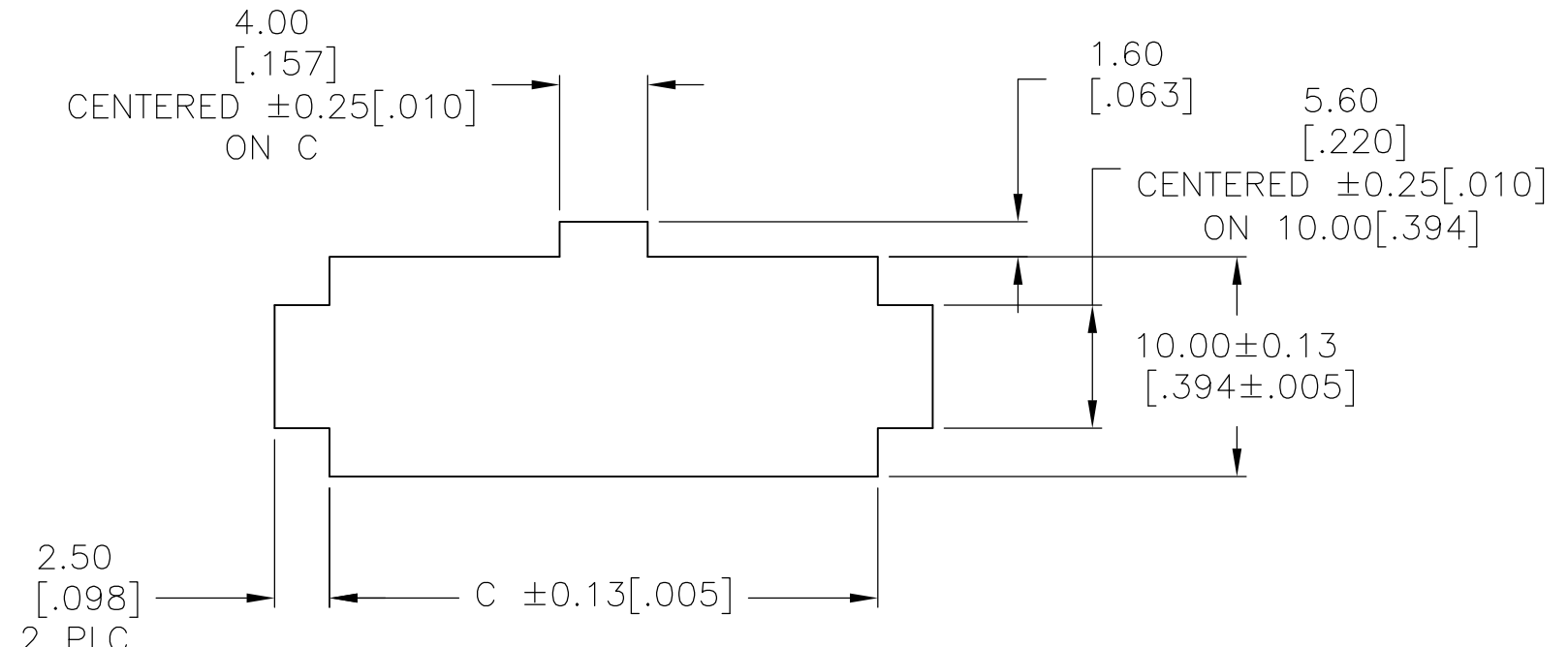
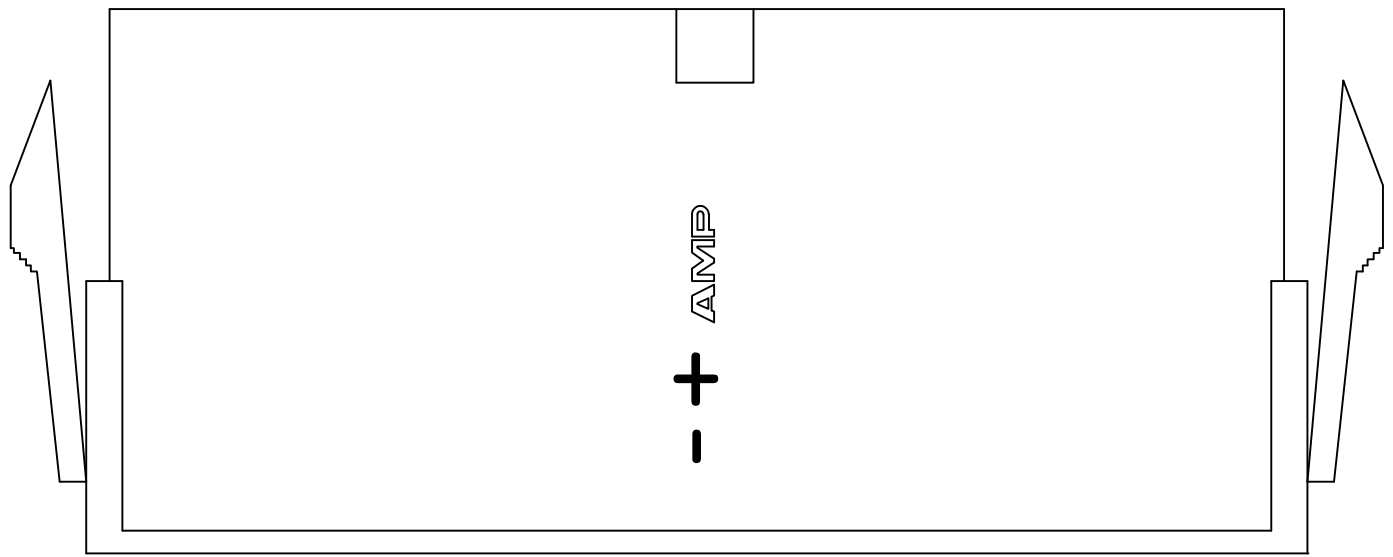
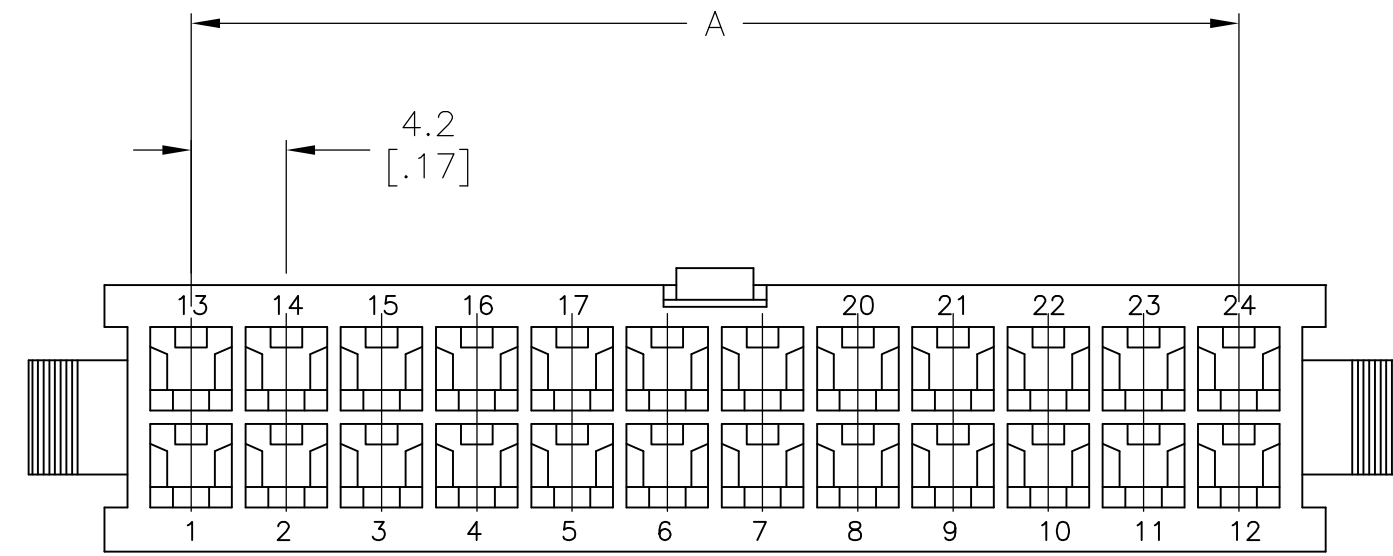


THIS DRAWING IS UNPUBLISHED. RELEASED FOR PUBLICATION
 © COPYRIGHT BY TYCO ELECTRONICS CORPORATION. ALL RIGHTS RESERVED.

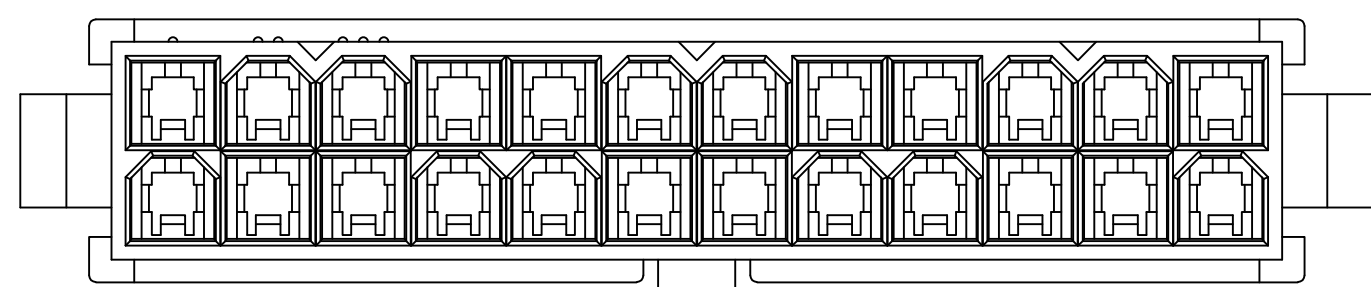
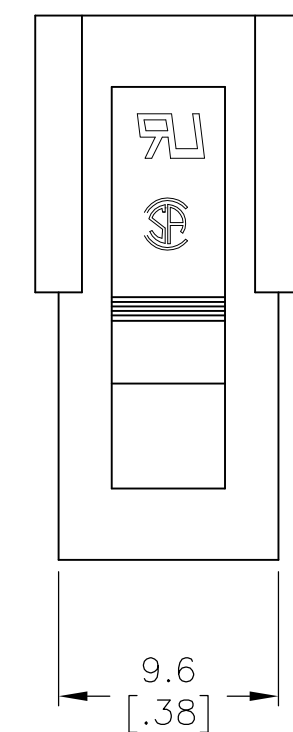
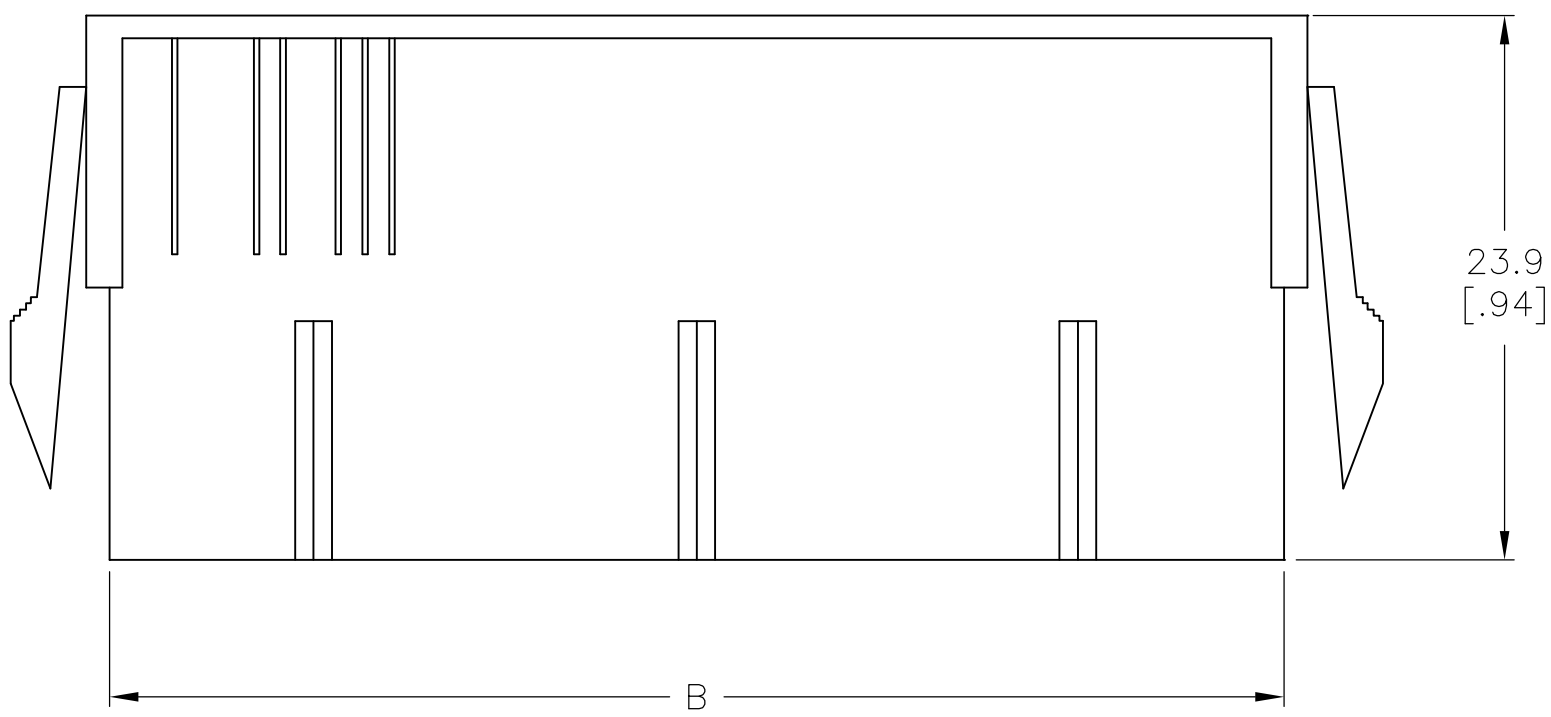
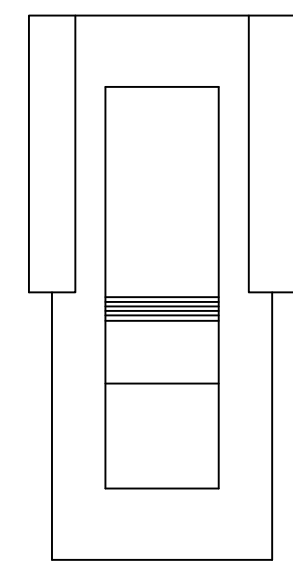
LOC		DIST		REVISIONS			
P	LTR	DESCRIPTION		DATE	DWN	APVD	
	B	REVISED PER ECR-09-023963		11NOV09	HMR	KR	



RECOMMENDED CUT OUT FOR
 2.00 [.079] MAX THICK PANEL



- 1 NYLON, UL94V-2, BLACK.
- 2 PANEL MUST BE PUNCHED SO THAT THE HOUSING ENTERS THE PANEL IN THE SAME DIRECTION AS THE PUNCH.



52.00[2.047]	51.60[2.031]	46.2[1.82]	24	2-2029088-4
47.80[1.882]	47.40[1.866]	42.0[1.65]	22	2-2029088-2
43.60[1.717]	43.20[1.701]	37.8[1.49]	20	2-2029088-0
39.40[1.551]	39.00[1.535]	33.6[1.32]	18	1-2029088-8
35.20[1.386]	34.80[1.370]	29.4[1.16]	16	1-2029088-6
31.00[1.220]	30.60[1.205]	25.2[.99]	14	1-2029088-4
26.80[1.055]	26.40[1.039]	21.0[.83]	12	1-2029088-2
22.60[.889]	22.20[.874]	16.8[.66]	10	1-2029088-0
18.40[.724]	18.00[.709]	12.6[.50]	8	2029088-8
14.20[.559]	13.80[.543]	8.4[.33]	6	2029088-6
10.00[.394]	9.60[.378]	4.2[.17]	4	2029088-4
5.80[.223]	5.40[.213]	--	2	2029088-2
DIM C	DIM B	DIM A	POS	PART NUMBER

METRIC

THIS DRAWING IS A CONTROLLED DOCUMENT.

DIMENSIONS: mm [INCHES]	TOLERANCES UNLESS OTHERWISE SPECIFIED: 0 PLC ± - 1 PLC ± 0.4[.02] 2 PLC ± 0.25[.010] 3 PLC ± 0.150[.0059] 4 PLC ± - ANGLES ± - FINISH -	DWN K. WHITAKER 04APR2008 CHK C. CASH 04APR2008 APVD C. CASH 04APR2008 PRODUCT SPEC APPLICATION SPEC WEIGHT -	Tyco Electronics Corporation Harrisburg, PA 17105-3608 NAME PLUG HOUSING, PANEL MOUNT, BLACK, VAL-U-LOK(TM) SIZE A2 CAGE CODE 00779 DRAWING NO C=2029088 RESTRICTED TO -
MATERIAL 1		CUSTOMER DRAWING	SCALE 3:1 SHEET 1 of 1 REV B

X-ON Electronics

Largest Supplier of Electrical and Electronic Components

Click to view similar products for [Pin & Socket Connectors](#) category:

Click to view products by [TE Connectivity](#) manufacturer:

Other Similar products are found below :

[6450822-1](#) [770392-1](#) [794042-1](#) [796885-1](#) [8-794535-1](#) [881459-2](#) [R929993003](#) [1-350779-3](#) [1403611-1](#) [1-480349-5](#) [152302-5](#) [1586092-1](#)
[1586129-1](#) [1586487-1](#) [1586681-4](#) [1586700-1](#) [1586065-1](#) [1586077-1](#) [1586368-1](#) [1586380-1](#) [1586616-1](#) [1586680-5](#) [1586681-2](#) [1604996-1](#)
[16-06-0038](#) [164164-5](#) [1-6609930-1](#) [172296-1](#) [1-794714-6](#) [19-09-2035](#) [1969804-1](#) [200503-1](#) [200788-2](#) [201046-7](#) [202648-4](#) [2029076-2](#)
[2029090-4](#) [2029095-4](#) [2-66102-6](#) [925061-7](#) [926681-1](#) [293734-4](#) [293737-2](#) [1-765362-4](#) [1-794606-3](#) [1871534-1](#) [1969795-1](#) [1969798-1](#)
[1969800-1](#) [200833-4](#)