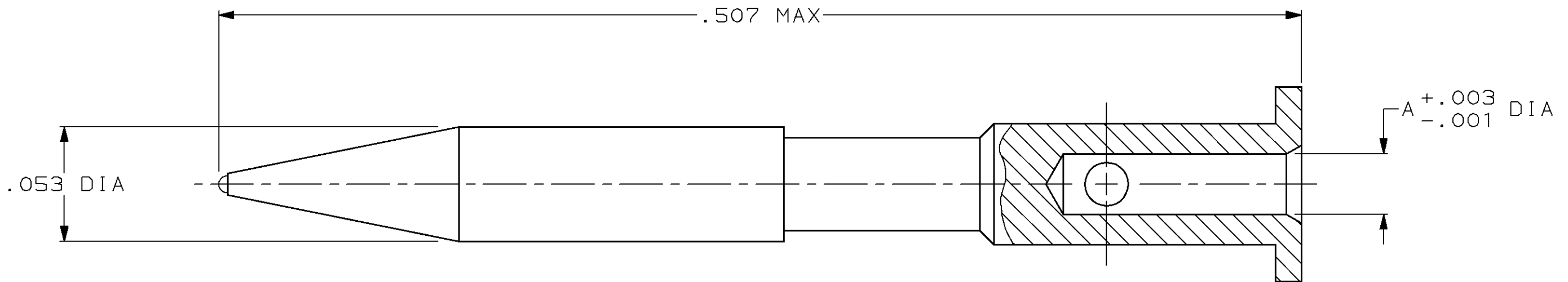


THIS DRAWING IS UNPUBLISHED. RELEASED FOR PUBLICATION, 19 .  
 © COPYRIGHT 19 BY AMP INCORPORATED. ALL INTERNATIONAL RIGHTS RESERVED.

LOC	DIST	P	F	ZONE	LTR	DESCRIPTION	DATE	APPD
AJ	16	✓	✓		C	ADD 1-7 PER 90-3486-024, REDRAWN	6-21-90	JL
					D	REVISED PER 0503-0593-97	9-30-97	JG



- ① GOLD PLATE PER MIL-G-45204, .000030 MINIMUM THICK.
- ② GOLD PLATE PER MIL-G-45204, .000050 MINIMUM THICK.

②	.020	1-221182-7
①	.024	1-221182-6
②	.015	1-221182-4
①	.015	1-221182-2
①	.035	1-221182-0
①	.044	221182-8
①	.020	221182-6
①	.040	221182-4
①	.028	221182-2

FINISH		A	PART NO
DO NOT SCALE PRINT. UNLESS SPECIFIED DIMENSIONS IN INCHES TOLERANCES ON: 2 PLC DEC ± - 3 PLC DEC ± .001 ANGLES ± -	DR J. LIPPERT 6-20-90	<b>AMP</b> AMP Incorporated Harrisburg, PA 17105-3608	
MATERIAL BRASS PER QQ-B-626	CHK S. J. MAGARO 7-2-90		
FINISH SEE PARTS LIST	APPD M. PHILLIPS 7-3-90	NAME CONTACT, 75 OHM, BNC	
	APPD S. J. MAGARO 7-5-90	SIZE B	CAGE CODE 00779
	PRODUCT SPEC -	DRAWING NO 221182	
	APPLICATION SPEC -	SCALE 20:1	SHEET 1 OF 1
	WEIGHT -		

## X-ON Electronics

Largest Supplier of Electrical and Electronic Components

*Click to view similar products for [RF Connectors](#) / [Coaxial Connectors](#) category:*

*Click to view products by [TE Connectivity](#) manufacturer:*

Other Similar products are found below :

[R125315120](#) [8915-1511-000](#) [89674-0827](#) [5916-1103-603](#) [0106-001-000](#) [6-0001-3](#) [6001-7071-019](#) [6002-7051-003](#) [6002-7551-202](#) [6059674-1](#) [619550-1](#) [630059-000](#) [M39012/25-0021](#) [M39012/79-3008](#) [M39030/3-01N](#) [M39030/3-03N](#) [M3933/25-29N](#) [M3933/25-36N](#) [6500-7071-046](#) [6501-1071-002](#) [M83723/72W24576](#) [M83723/72W2457N](#) [6769](#) [CX050L2AQ](#) [7002-1541-010](#) [7003-1572-002](#) [7004-1512-000](#) [7009-1511-004](#) [7010-1511-000](#) [7029-1511-060](#) [7101-1541-010](#) [7101-1571-002](#) [7105-1521-002](#) [7145-1521-002](#) [7209-1511-011](#) [7210-1511-012](#) [7210-1511-015](#) [7210-1511-019](#) [7210-1511-040](#) [7225-1512-050](#) [7242-1511-000](#) [73137-5015](#) [73216-2241](#) [73251-0111](#) [73251-0672](#) [73276-1501](#) [73366-0013](#) [73404-2300](#) [73413-6080](#) [734151610](#)