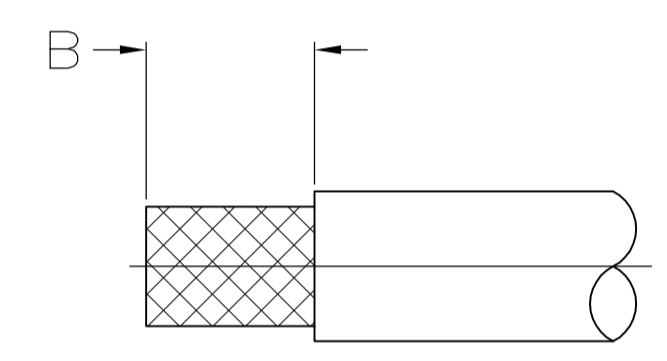
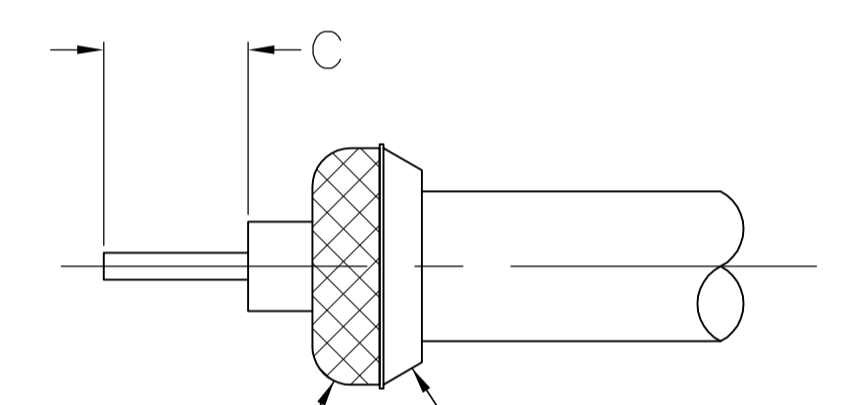


- 1 RG-59/U,59A/U,59B/U,62/U,62A/U,62B/U,71/U,71A/U,71B/U,210/U
- 2 RG-58/U,58A/U,58B/U,58C/U,141/U,141A/U,142/U,142A/U,142B/U,55/U,55A/U,55B/U,223/U,400/U
- 3. USE INSRTUCTION SHEET 408-6851
- 4 SEE SEPERATE RESTRICTED CUSTOMER DRAWING



STEP #1



FOLD BRAID OVER ITEM #3 AND TRIM

STEP #2

RECOMMENDED STRIP LENGTH

SUPSD BY 221265-2	△	-	-	-	-	-	-	-	-	-	-	-	-	-	-	2-221265-1
SUPSD BY 221265-2	△	-	-	-	-	-	-	-	-	-	-	-	-	-	-	2-221265-0
OBSOLETE	AMP 1-221265-8	RG-179/U,179A/U,179B/U,187/U,187A/U	3.96 [.156]	7.92 [.312]	31.75 [1.250]	1-221280-2	221276-3	221277-4	1-221281-2	221268-6	221282-9	1-221265-8				
OBSOLETE	AMP 1-221265-7	RG-180/U,195/U	3.96 [.156]	7.92 [.312]	31.75 [1.250]	1-221280-1	221276-3	221277-3	1-221281-1	221268-6	221282-8	1-221265-7				
OBSOLETE	AMP 1-221265-6	RG-8/U,8A/U,9/U,9A/U,9B/U,213/U,214/U	3.18 [.125]	7.14 [.281]	38.10 [1.500]	221274-3	221271-3	221279-1	221273-3	221269-2	1-221282-0	1-221265-6				
OBSOLETE	AMP 1-221265-5	RG-174/U,316/U	3.96 [.156]	7.92 [.312]	31.75 [1.250]	1-221280-2	221276-3	221277-4	1-221281-2	221268-4	221282-9	1-221265-5				
OBSOLETE	AMP 1-221265-4	RG-302/U	3.96 [.156]	7.92 [.312]	31.75 [1.250]	221280-9	221276-3	221277-1	1-221281-0	221268-4	221282-7	1-221265-4				
OBSOLETE	AMP 1-221265-3	RG-303/U	3.96 [.156]	7.92 [.312]	31.75 [1.250]	1-221280-1	221276-3	221277-3	221281-9	221268-2	221282-6	1-221265-3				
OBSOLETE	AMP 1-221265-2	RG-122/U	3.96 [.156]	7.92 [.312]	31.75 [1.250]	1-221280-1	221276-3	221277-3	1-221281-1	221268-2	221282-8	1-221265-2				
OBSOLETE	AMP 1-221265-1	△	3.96 [.156]	7.92 [.312]	31.75 [1.250]	1-221280-0	221276-3	221277-2	1-221281-0	221268-4	413752-7	1-221265-1				
OBSOLETE	AMP 1-221265-0	△	3.96 [.156]	7.92 [.312]	31.75 [1.250]	221280-9	221276-3	221277-1	221281-9	221268-2	413752-6	1-221265-0				
OBSOLETE	AMP 221265-9	RG-179/U,179A/U,179B/U,187/U,187A/U	3.96 [.156]	7.92 [.312]	31.75 [1.250]	221280-8	221276-2	221277-4	221281-8	221268-6	221282-4	221265-9				
OBSOLETE	AMP 221265-8	RG-180/U,195/U	3.96 [.156]	7.92 [.312]	31.75 [1.250]	221280-6	221276-2	221277-3	221281-6	221268-6	221282-3	221265-8				
OBSOLETE	AMP 221265-7	RG-8/U,8A/U,9/U,9A/U,9B/U,213/U,214/U	3.18 [.125]	7.14 [.281]	38.10 [1.500]	221274-2	221271-2	221279-1	221273-2	221269-2	221282-5	221265-7				
OBSOLETE	AMP 221265-6	RG-174/U,316/U	3.96 [.156]	7.92 [.312]	31.75 [1.250]	221280-8	221276-2	221277-4	221281-8	221268-4	221282-4	221265-6				
OBSOLETE	AMP 221265-2	△	3.96 [.156]	7.92 [.312]	31.75 [1.250]	221280-4	221276-2	221277-2	221281-4	221268-9	413752-2	221265-2				
OBSOLETE	AMP 221265-1	△	3.96 [.156]	7.92 [.312]	31.75 [1.250]	221280-2	221276-2	221277-1	221281-2	221268-8	413752-1	221265-1				
		STAMPING	CABLE SIZE	C	B	A	6 NUT QTY=1	5 WASHER QTY=1	4 GASKET QTY=1	3 CLAMP QTY=1	2 CONTACT QTY=1	1 PLUG ASSY QTY=1	PART NUMBER			

THIS DRAWING IS A CONTROLLED DOCUMENT.

DIMENSIONS: INCHES	TOLERANCES UNLESS OTHERWISE SPECIFIED:	DIN B SCOTT 2-26-91	REVISED PER ECO-15-011822
0 PLC ± -	1 PLC ± -	3-15-91	DATE
2 PLC ± 0.25 [010]	3 PLC ± -	4-3-91	DWN
4 PLC ± -	ANGLES ± -	NAME	APVD
MATERIAL	FINISH	PRODUCT SPEC	108-12075
		APPLICATION SPEC	
		SIZE	A1
		WEIGHT	00779
		CUSTOMER DRAWING	SCALE 4:1

STE TE Connectivity

PLUG, CATEGORY A, SERIES BNC

SIZE A1 00779 C=221265

SHEET 1 OF 1

X-ON Electronics

Largest Supplier of Electrical and Electronic Components

Click to view similar products for [RF Connectors / Coaxial Connectors](#) category:

Click to view products by [TE Connectivity](#) manufacturer:

Other Similar products are found below :

[R125315120](#) [8915-1511-000](#) [89674-0827](#) [5916-1103-603](#) [6-0001-3](#) [6001-7071-019](#) [6002-7051-003](#) [6002-7551-202](#) [6059674-1](#) [619550-1](#)
[630059-000](#) [M39012/25-0021](#) [M39012/79-3008](#) [M39030/3-01N](#) [M39030/3-03N](#) [M3933/25-36N](#) [6500-7071-046](#) [M83723/72W24576](#)
[M83723/72W2457N](#) [6769](#) [CX050L2AQ](#) [7002-1541-010](#) [7002-1572-002](#) [7003-1572-002](#) [7010-1511-000](#) [7029-1511-060](#) [7101-1541-010](#)
[7101-1571-002](#) [7105-1521-002](#) [7145-1521-002](#) [7209-1511-011](#) [7210-1511-015](#) [7210-1511-019](#) [7225-1512-050](#) [7242-1511-000](#) [73137-5015](#)
[73251-0111](#) [73251-0672](#) [7325-1512-000](#) [73276-1501](#) [73366-0013](#) [73404-2300](#) [73413-6080](#) [73415-5721](#) [7405-1521-005](#) [7405-1521-802](#)
[7406-1521-005](#) [804S01D04M040](#) [8145-1521-002](#) [81590](#)