

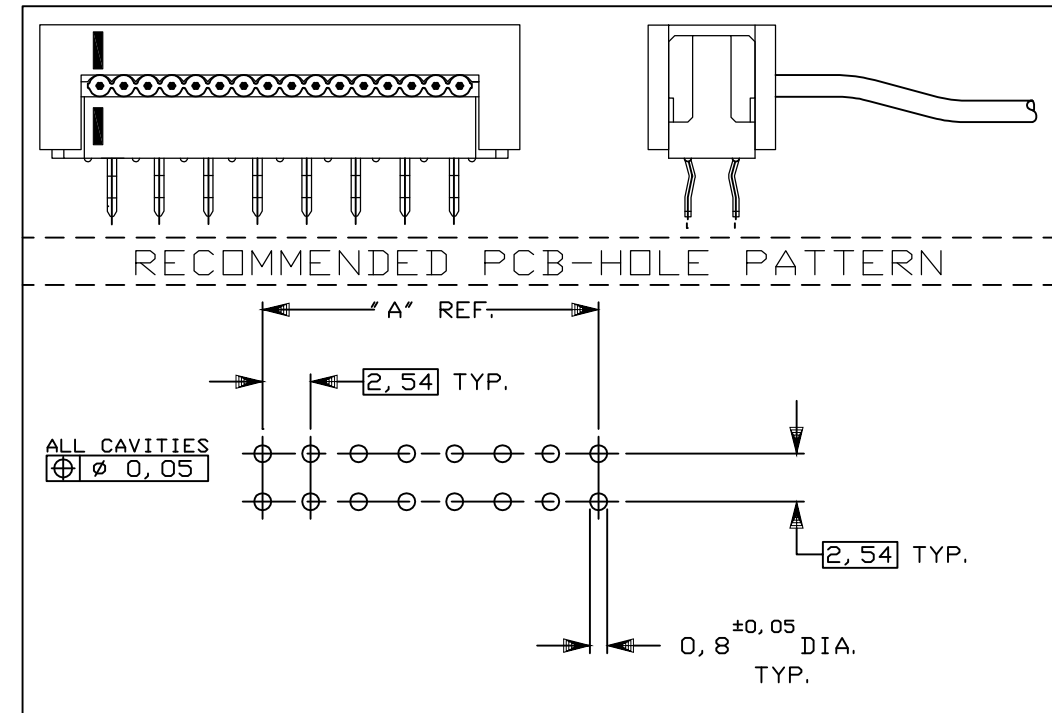
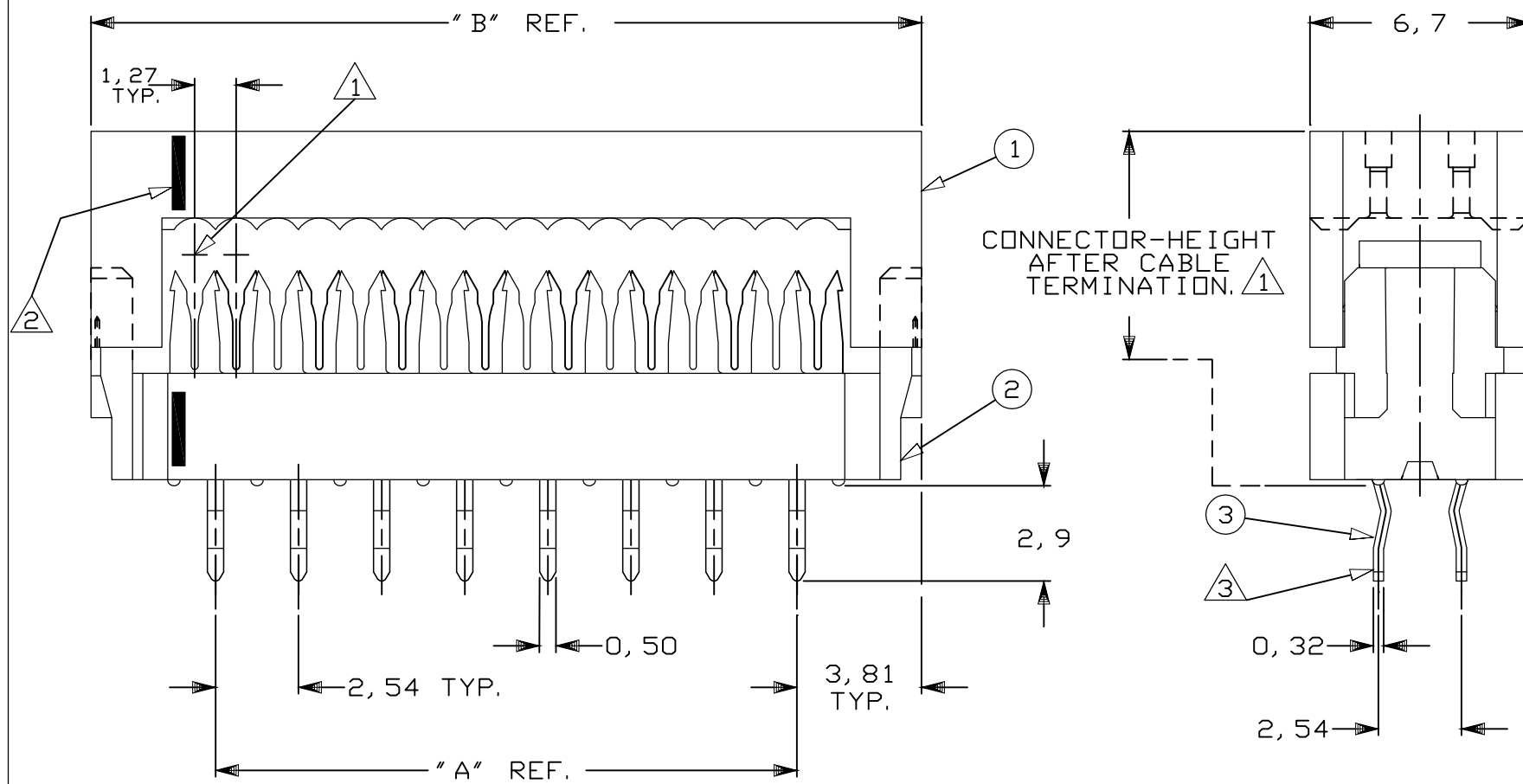
DO NOT SCALE
DIMENSIONS IN mm

METRIC



NOTES:

- ① CONNECTOR IS DESIGNED FOR FLAT RIBBON CABLE ON 1,27 CENTERS. FOR CABLE REQUIREMENTS SEE APPLICATION SPECIFICATION 114-19022.
- ② INDICATION OF FIRST CABLE POSITION REFERRING TO CORRESPONDING CONTACT POSITION (BLACK INK MARKS)
- ③ SOLDER-TINES FOR 0,8^{±0,05} DIA. HOLES.
- 4) PRODUCT SPECIFICATION 108-19033



DIM. "B" REF.	DIM. "A" REF.	NR. OF POS.	PARTNUMBER	PART REV.
86,36	78,74	64	6-216791-4	B
81,28	73,66	60	6-216791-0	B
68,58	60,96	50	5-216791-0	B
60,96	53,34	44	4-216791-4	B
55,88	48,26	40	4-216791-0	B
48,26	40,64	34	3-216791-4	B
38,10	30,48	26	2-216791-6	B
30,48	22,86	20	2-216791-0	B
25,40	17,78	16	1-216791-6	B
22,86	15,24	14	1-216791-4	B
17,78	10,16	10	1-216791-0	B
12,70	5,08	6	216791-6	B

③ CONTACTS	PHOSPHORBRONZE	3,0-5,1 μm TIN WITH ENTIRE NICKEL UNDERCOATING
② HOUSING AND COVER	THERMOPLASTIC POLYESTER	GREY
① HOUSING		
COMPONENT NAME	MATERIAL	PLATING / COLOUR
CUSTOMER DRAWING FOR REFERENCE ONLY WILL NOT BE UPDATED		
C COPYRIGHT 19- BY TE HOLLAND B.V. ALL INTERNATIONAL RIGHTS RESERVED. TE PRODUCTS MAY BE COVERED BY U. S. AND FOREIGN AND/OR PATENTS PENDING. THIS DRAWING IS UNPUBLISHED RELEASED FOR PUBLICATION , 19		
		TE Connectivity
NAME AMP-LATCH 2.54 DIL-PLUG CONNECTOR WITH RETENTION FEATURE.		
DRG. No.	REV. LTR.	SHEET
C-216791	B3	1 OF 1

DR.	CHK.	APP.	DATE
R. HOGEVEEN	R. VERSTIJNEN	L. V. SOEST.	06-11-89
DATE: 06-11-89	DATE: 09-11-89	DATE: 09-11-89	

X-ON Electronics

Largest Supplier of Electrical and Electronic Components

Click to view similar products for [Headers & Wire Housings](#) category:

Click to view products by [TE Connectivity](#) manufacturer:

Other Similar products are found below :

[892-18-020-10-001101](#) [58102-G61-06LF](#) [582553-1](#) [0009485154](#) [009176003701906](#) [0050291907](#) [LY20-4P-DT1-P1E-BR](#) [02.125.8002.8](#)
[609-3404](#) [61062-3](#) [61082-181009](#) [622-3653LF](#) [63453-116](#) [636-1030](#) [636-1427](#) [636-3427](#) [636-4007](#) [641938-9](#) [641991-4](#) [644827-2](#) [65817-](#)
[010LF](#) [65817-015LF](#) [65863-015LF](#) [66207-023LF](#) [67095-007LF](#) [67601157](#) [68645-018](#) [68648-049](#) [70.362.1628.0](#) [70-4210](#) [70-4226B](#) [70-](#)
[4853B](#) [707-5020](#) [707-5028](#) [71.350.2428.0](#) [71918-208LF](#) [71961-016LF](#) [733-134](#) [733-162](#) [754199-000](#) [760-3052](#) [787-8014-00](#) [79531-3000](#)
[FCN-360C032-B](#) [FCN-367T-T012/H](#) [FCN-723D010/2](#) [80.063.4001.1](#) [800-90-001-10-001000](#) [800-90-010-10-002000](#) [801-43-002-10-013000](#)