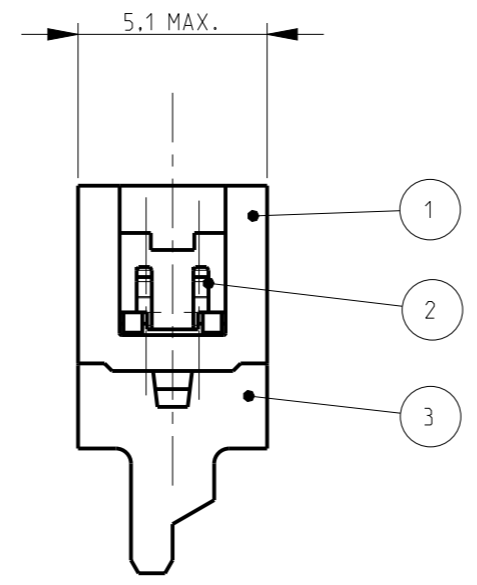
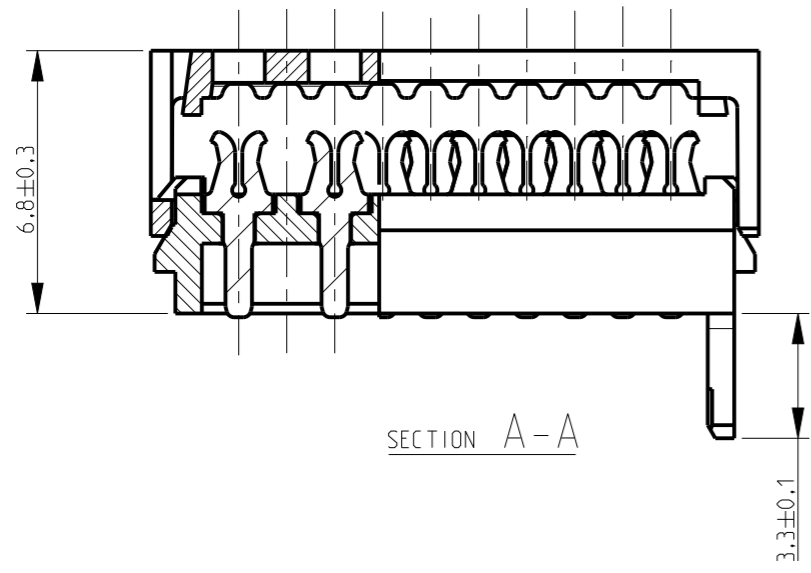
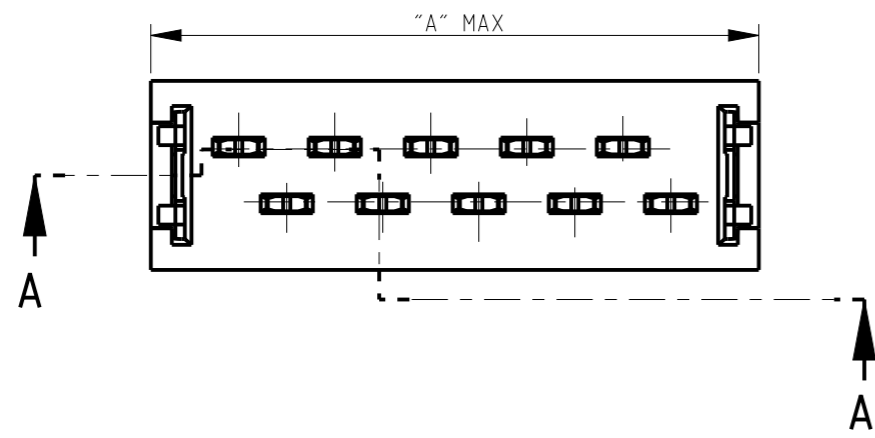
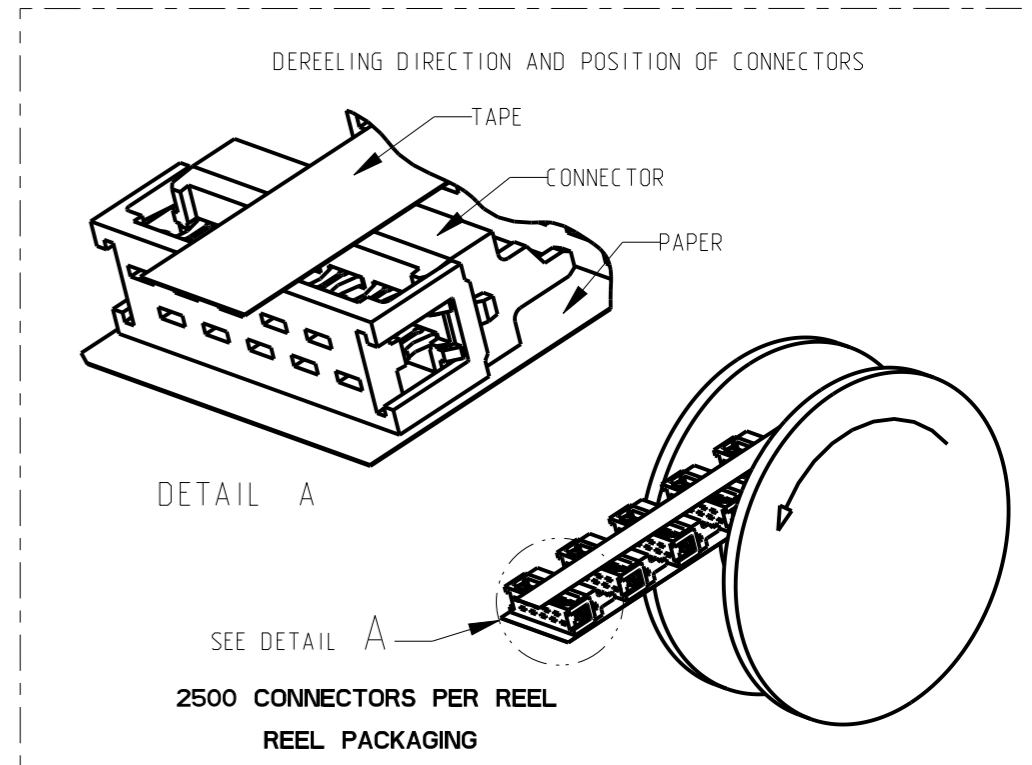


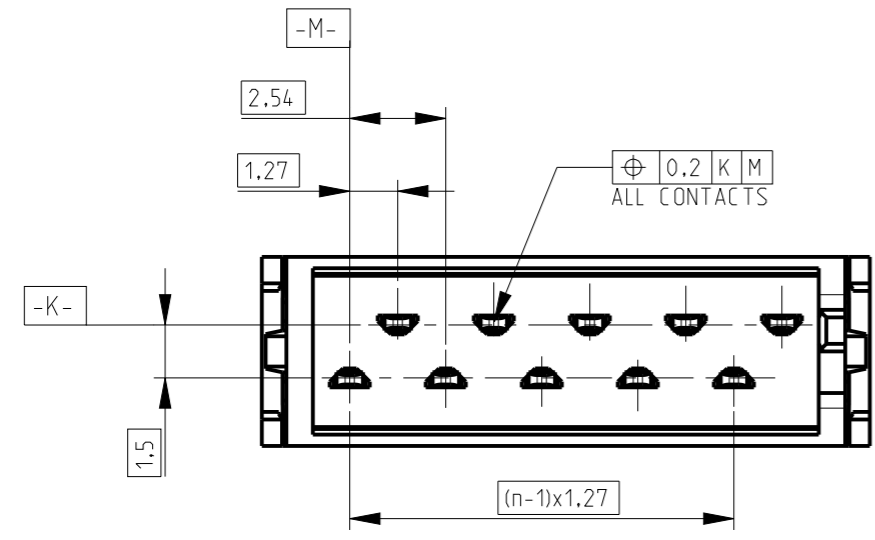
P	LTR	DESCRIPTION	DATE	DWN	APVD
	A1	PN STATUS UPDATED	17MAY2021	SB	KJK



PART NUMBER REEL PACKAGING	NO. OF POS "n"	DIMENSION "A" MAX
<del>2178712-4</del>	4	8.6
<del>2178712-6</del>	6	11.1
<del>2178712-8</del>	8	13.6
1-2178712-0	10	16.2
<del>1-2178712-2</del>	12	18.7
<del>1-2178712-4</del>	14	21.3
<del>1-2178712-6</del>	16	23.8
<del>1-2178712-8</del>	18	26.3
<del>2-2178712-0</del>	20	28.9



FINISH / COLOR	MATERIAL	DESCRIPTION	ITEM
BLACK	PBT, GF	HOUSING	3
3.0 - 5.0 μm TIN OVER 0.5 μm NICKEL	TIN BRASS	MALE CONTACT	2
BLACK	PBT, GF	COVER	1



NOTES;  
 1. SHOWN IS A 10 POSITION CONNECTOR  
 △ OBSOLETE

THIS DRAWING IS A CONTROLLED DOCUMENT.		DWN PRASHANTH 08AUG2014		TE Connectivity	
DIMENSIONS: mm		CHK PRASHANTH S 12AUG2014			
TOLERANCES UNLESS OTHERWISE SPECIFIED:		APVD JAYANTH KUMAR 14AUG2014		NAME Micro-MaTch VALUE LINE MALE-ON-WIRE CONNECTOR	
0 PLC ±		PRODUCT SPEC 108-32087		SIZE A3	
1 PLC ±		APPLICATION SPEC 114-19016		CAGE CODE 00779	
2 PLC ±		WEIGHT -		DRAWING NO C-2178712	
3 PLC ±		CUSTOMER DRAWING		RESTRICTED TO	
4 PLC ±		SCALE 5:1		SHEET 1 OF 1	
ANGLES ±		REV A1			
MATERIAL SEE TABLE		FINISH SEE TABLE			

## X-ON Electronics

Largest Supplier of Electrical and Electronic Components

*Click to view similar products for [Headers & Wire Housings](#) category:*

*Click to view products by [TE Connectivity](#) manufacturer:*

Other Similar products are found below :

[892-18-020-10-001101](#) [58102-G61-06LF](#) [582553-1](#) [0009485154](#) [009176003701906](#) [0050291907](#) [LY20-4P-DT1-P1E-BR](#) [02.125.8002.8](#)  
[609-3404](#) [61062-3](#) [61082-181009](#) [622-3653LF](#) [63453-116](#) [636-1030](#) [636-1427](#) [636-3427](#) [636-4007](#) [641938-9](#) [641991-4](#) [644827-2](#) [65817-](#)  
[010LF](#) [65817-015LF](#) [65863-015LF](#) [66207-023LF](#) [67095-007LF](#) [67601157](#) [68645-018](#) [68648-049](#) [70.362.1628.0](#) [70-4210](#) [70-4226B](#) [70-](#)  
[4853B](#) [707-5020](#) [707-5028](#) [71.350.2428.0](#) [71918-208LF](#) [71961-016LF](#) [733-134](#) [733-162](#) [754199-000](#) [760-3052](#) [787-8014-00](#) [79531-3000](#)  
[FCN-360C032-B](#) [FCN-367T-T012/H](#) [FCN-723D010/2](#) [80.063.4001.1](#) [800-90-001-10-001000](#) [800-90-010-10-002000](#) [801-43-002-10-013000](#)