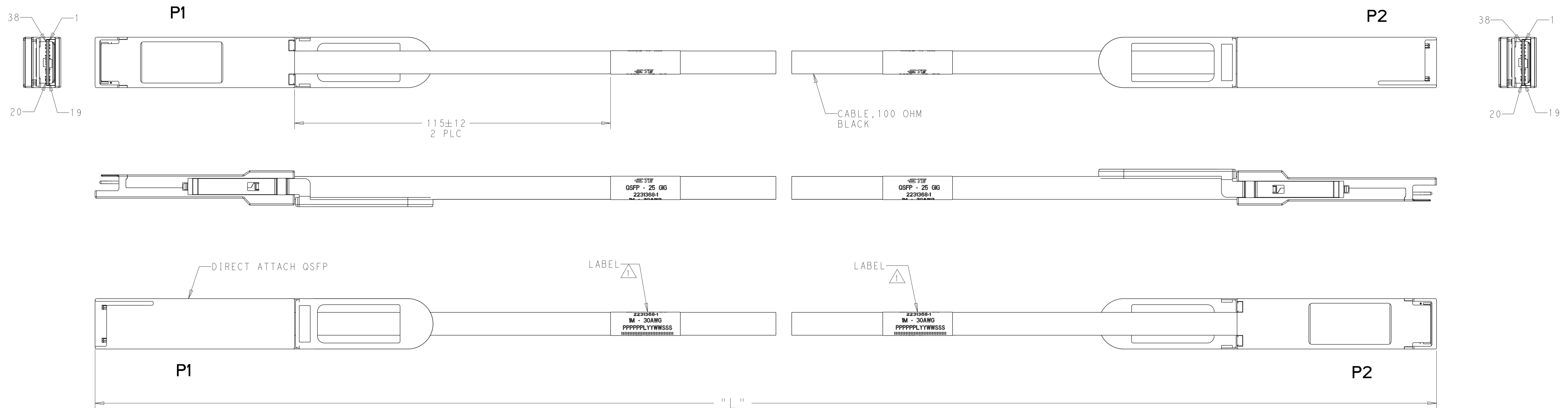
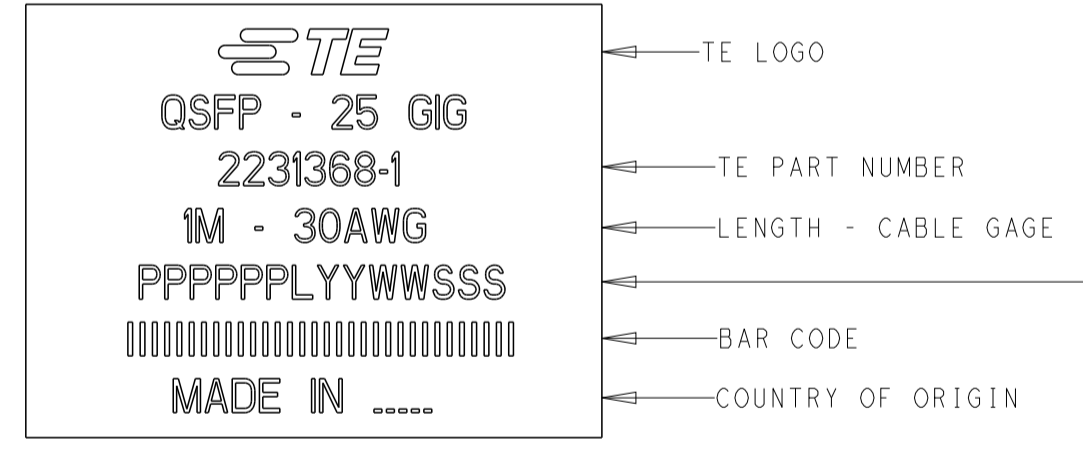


REVISIONS				
P	LTN	DESCRIPTION	DATE	OWN APVD
E		REVISED PER ECO-18-018662	29NOV2018	PL EC
K		REVISED PER ECO-19-002462	28FEB2019	AP GF
L		REVISED PER ECO-19-012453	13AUG2019	AP GF



△ LABEL INFORMATION: -1 SHOWN.



SERIAL NUMBER:
 P P P P P - 6-DIGIT, BASE 34, ALPHANUMERIC CHARACTERS
 (EXCLUDES 1 AND 0)
 L - MANUFACTURING LOCATION CODE
 Y Y W W - DATE CODE, 2-DIGIT YEAR, 2-DIGIT WEEK
 S S S - 3-DIGIT, BASE 34, SERIAL ALPHANUMERIC CHARACTERS
 (EXCLUDES 1 AND 0)

- SEE SHEET 2 FOR WIRING SCHEMATIC.
- PRODUCT AND PROCESSING MUST MEET THE REQUIREMENTS OF TE SPECIFICATION TEC-138-702. (CONTAINS NO BANNED OR RESTRICTED SUBSTANCES)
- EEPROM DOES NOT INCLUDE PAGE SWAPPING.
- TEST IN ACCORDANCE WITH IEEE802.3bj.

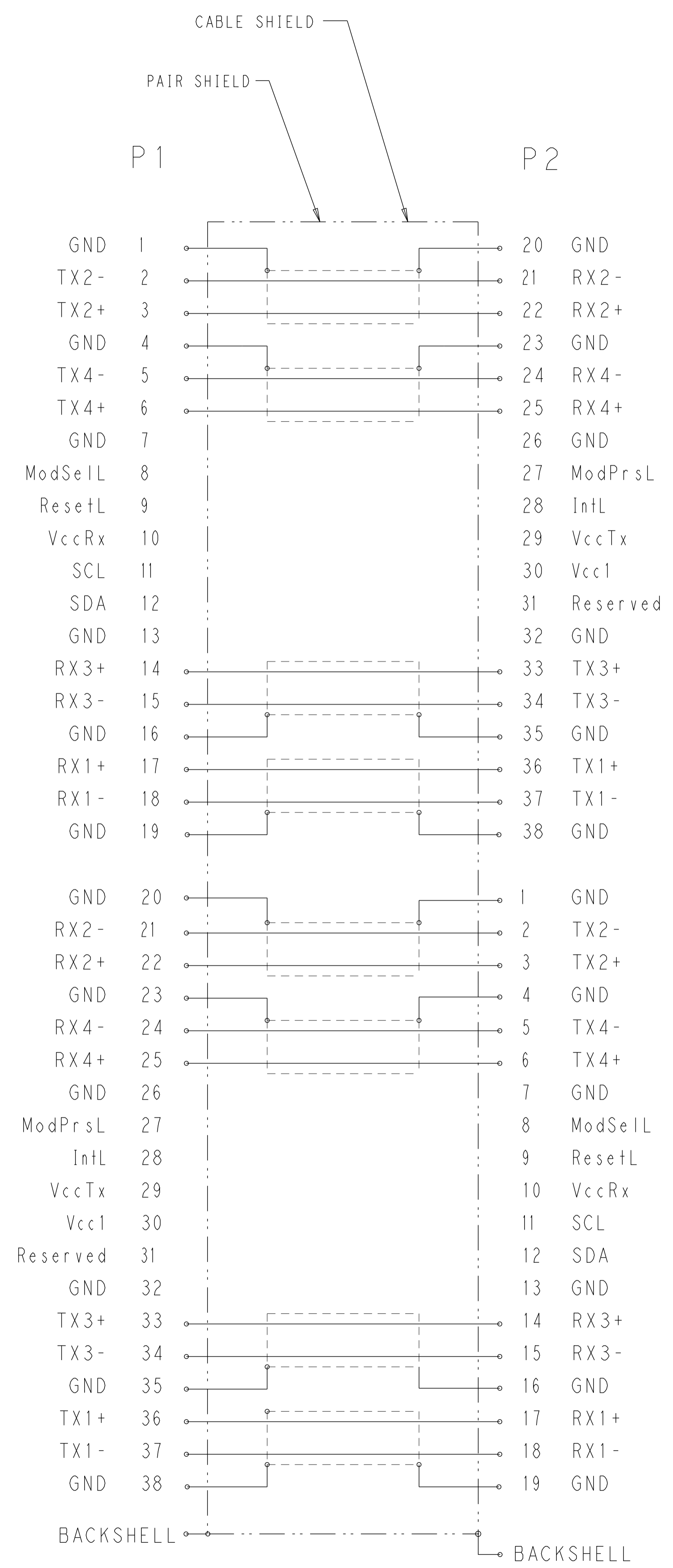
△ DUE TO SHORT CABLE LENGTH, THE PART NUMBERS INDICATED MAY NOT MEET IEEE802.3bj. RETURN LOSS AND MINIMUM INSERTION LOSS LIMITS

OBSOLETE	30	3500 +80/-0	3-2231368-5
	30	2500 +80/-0	3-2231368-4
SUPERSEDED BY 2333842-5	26	2500 +80/-0	3-2231368-3
	30	△ 500 +50/-0	2-2231368-3
SUPERSEDED BY 2336313-1	33	△ 500 +50/-0	2-2231368-2
SUPERSEDED BY 2333841-8	28	4000 +80/-0	2-2231368-1
SUPERSEDED BY 2333841-4	28	2000 +80/-0	2-2231368-0
OBSOLETE	24	7000 +100/-0	1-2231368-9
SUPERSEDED BY 2336313-4	33	2000 +80/-0	1-2231368-8
SUPERSEDED BY 2336313-3	33	1500 +50/-0	1-2231368-7
SUPERSEDED BY 2336313-2	33	1000 +50/-0	1-2231368-6
SUPERSEDED BY 2333842-3	26	1500 +50/-0	1-2231368-5
SUPERSEDED BY 2333842-4	26	2000 +80/-0	1-2231368-4
OBSOLETE	30	4000 +80/-0	1-2231368-3
SUPERSEDED BY 1-2333842-0	26	5000 +80/-0	1-2231368-2
OBSOLETE	24	4000 +80/-0	1-2231368-1
OBSOLETE	24	3000 +80/-0	1-2231368-0
	30	1500 +50/-0	2231368-9
	30	3000 +80/-0	2231368-8
SUPERSEDED BY 2333842-6	26	3000 +80/-0	2231368-7
OBSOLETE	24	6000 +80/-0	2231368-6
OBSOLETE	24	5000 +80/-0	2231368-5
SUPERSEDED BY 2333842-8	26	4000 +80/-0	2231368-4
SUPERSEDED BY 2333841-6	28	3000 +80/-0	2231368-3
	30	2000 +80/-0	2231368-2
	30	1000 +50/-0	2231368-1
	GAGE	"L" mm	PART NO

THIS DRAWING IS A CONTROLLED DOCUMENT. OWN: T. SMITH 08FEB2017, CHG: E. CUESTA 08FEB2017, APVD: E. CUESTA 08FEB2017. DIMENSIONS: mm. TOLERANCES UNLESS OTHERWISE SPECIFIED: 0 PLC ±, 1 PLC ±, 2 PLC ±, 3 PLC ±, 4 PLC ±, ANGLES ±, FINISH ±. MATERIAL: -. WEIGHT: -. CUSTOMER DRAWING. NAME: CABLE ASSEMBLY, DIRECT ATTACH QSFP 25GIG. SIZE: A1. CAGE CODE: -. DRAWING NO: C=2231368. SCALE: 5:1. SHEET 1 OF 2. REV L.

THIS DRAWING IS UNPUBLISHED. RELEASED FOR PUBLICATION. ALL RIGHTS RESERVED.

REVISIONS				
P	LTN	DESCRIPTION	DATE	APVD
-	-	SEE SHEET 1	-	-



WIRING PATTERN

THIS DRAWING IS A CONTROLLED DOCUMENT.		OWN T. SMITH 08FEB2017	
DIMENSIONS: mm		CHK E. CUESTA 08FEB2017	
TOLERANCES UNLESS OTHERWISE SPECIFIED:		APVD E. CUESTA 08FEB2017	NAME CABLE ASSEMBLY, DIRECT ATTACH QSFP 25GIG
0 PLC ±		PRODUCT SPEC	SIZE A1
1 PLC ±		APPLICATION SPEC	CAGE CODE -
2 PLC ±		WEIGHT	DRAWING NO. C=2231368
3 PLC ±		CUSTOMER DRAWING	RESTRICTED TO
4 PLC ±		SCALE 5:1	SHEET 2 OF 2
ANGLES FINISH		REV L	

X-ON Electronics

Largest Supplier of Electrical and Electronic Components

Click to view similar products for [Ethernet Cables / Networking Cables](#) category:

Click to view products by [TE Connectivity](#) manufacturer:

Other Similar products are found below :

[0152660053](#) [603020002](#) [73-7797-25](#) [73-8890-10](#) [73-8890-14](#) [73-8891-14](#) [73-8891-25](#) [73-8892-50](#) [73-8894-10](#) [73-8894-3](#) [73-8895-14](#) [73-8896-7](#) [MCJB2-10P6Q7-120](#) [84909-0204](#) [9QA0-111-12-3.00](#) [1200650742](#) [1200700174](#) [1200860368](#) [1200650013](#) [1201080008](#) [1-21919-1](#) [1300500373](#) [1300101844](#) [1300101845](#) [130050-0004](#) [1300500014](#) [1410147](#) [E16A06002M030](#) [E200102-009-S1](#) [MT14-187L](#) [17-103530](#) [NK5EPC18RDY](#) [NK5EPC18VLY](#) [NK5EPC18YLY](#) [NK5EPC1GRY](#) [NK5EPC30BLY](#) [NK5EPC30VLY](#) [NK5EPC30YLY](#) [NK5EPC4Y](#) [NK5EPC6YLY](#) [NK5EPC8BLY](#) [NK5EPC9YLY](#) [NK6PC30BUY](#) [NK6PC30GRY](#) [NK6PC30RDY](#) [NK6PC30Y](#) [NK6PC30YLY](#) [1969343-6](#) [C501100010](#) [C501106002](#)