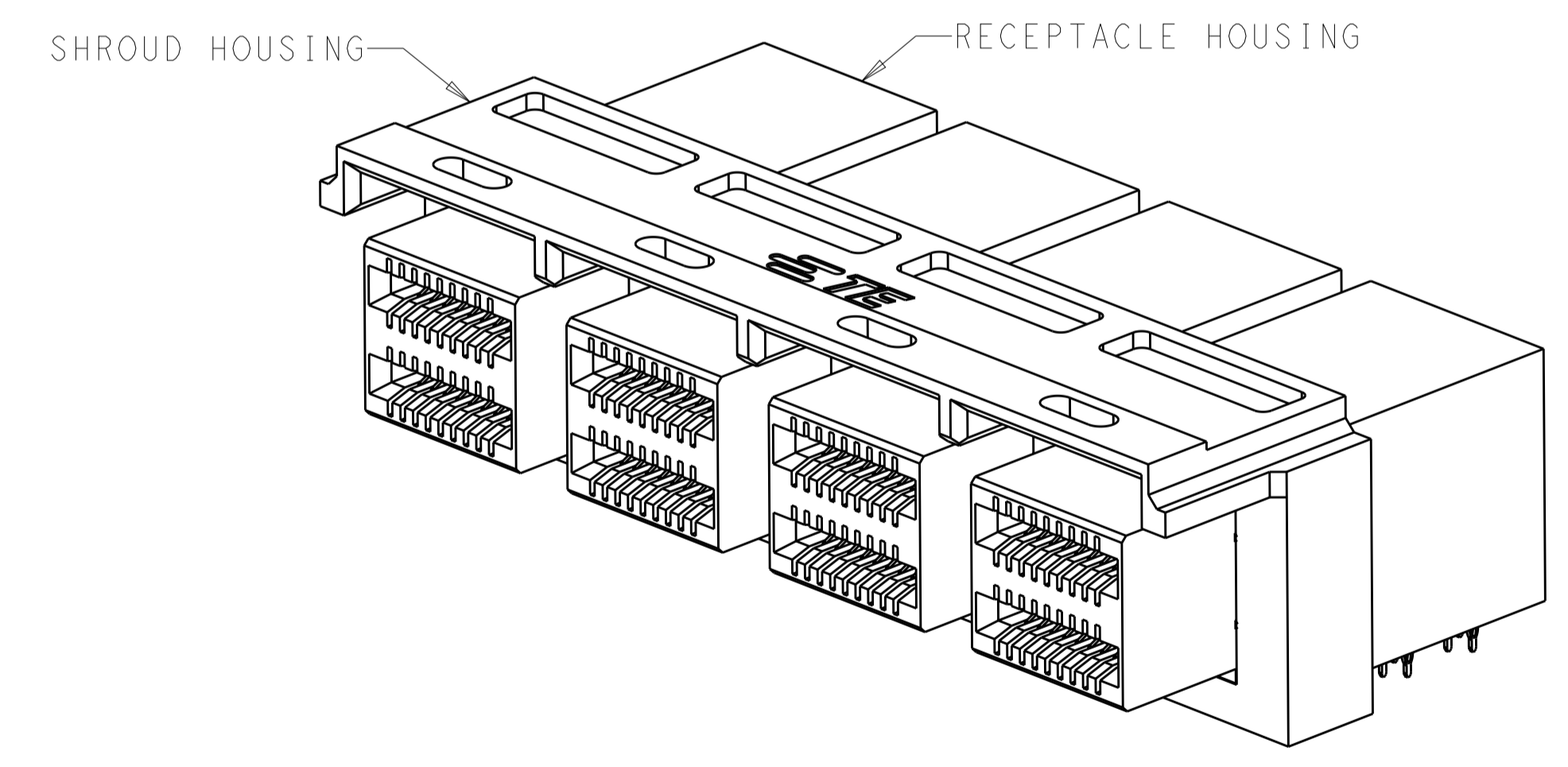
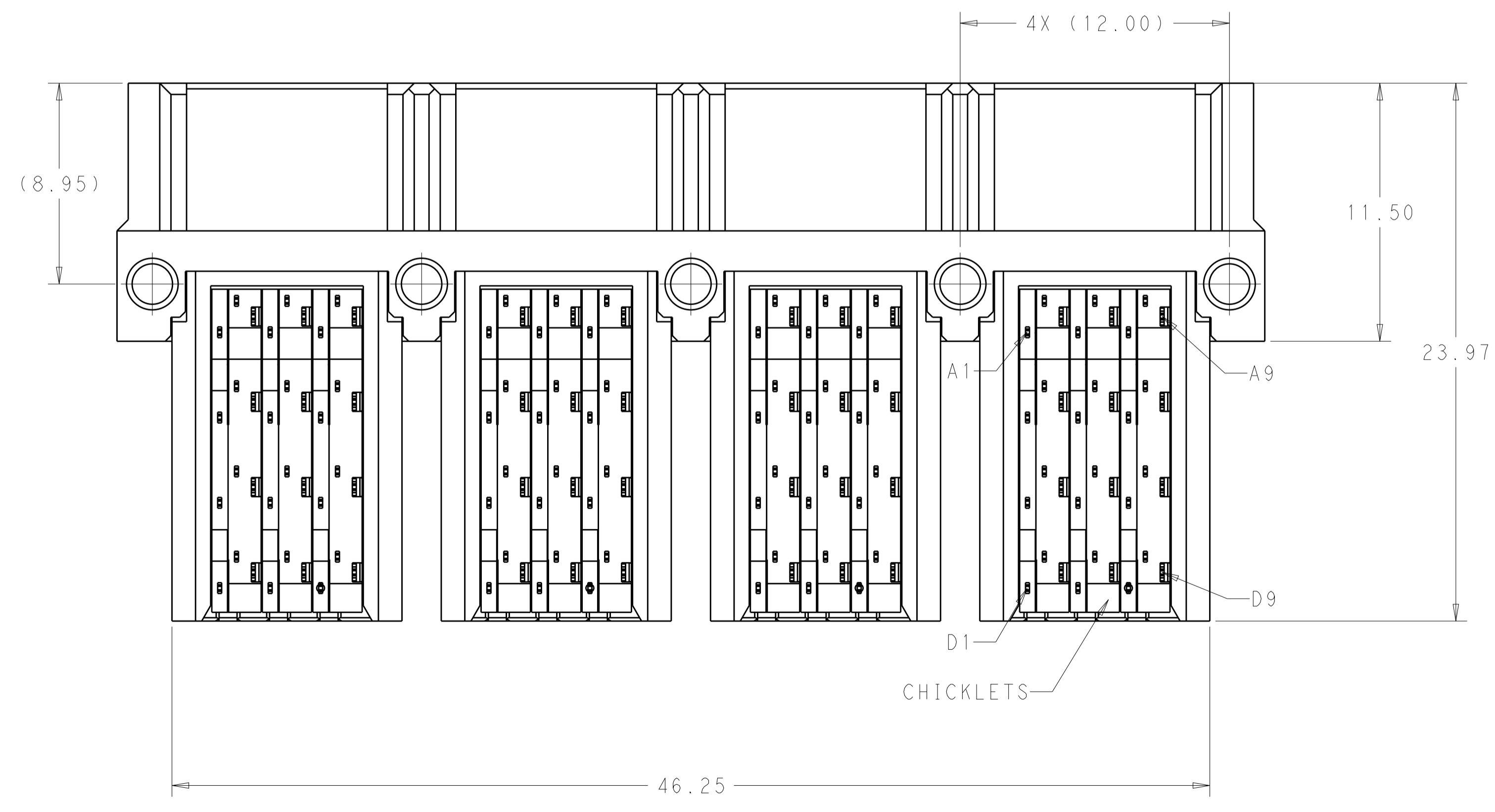
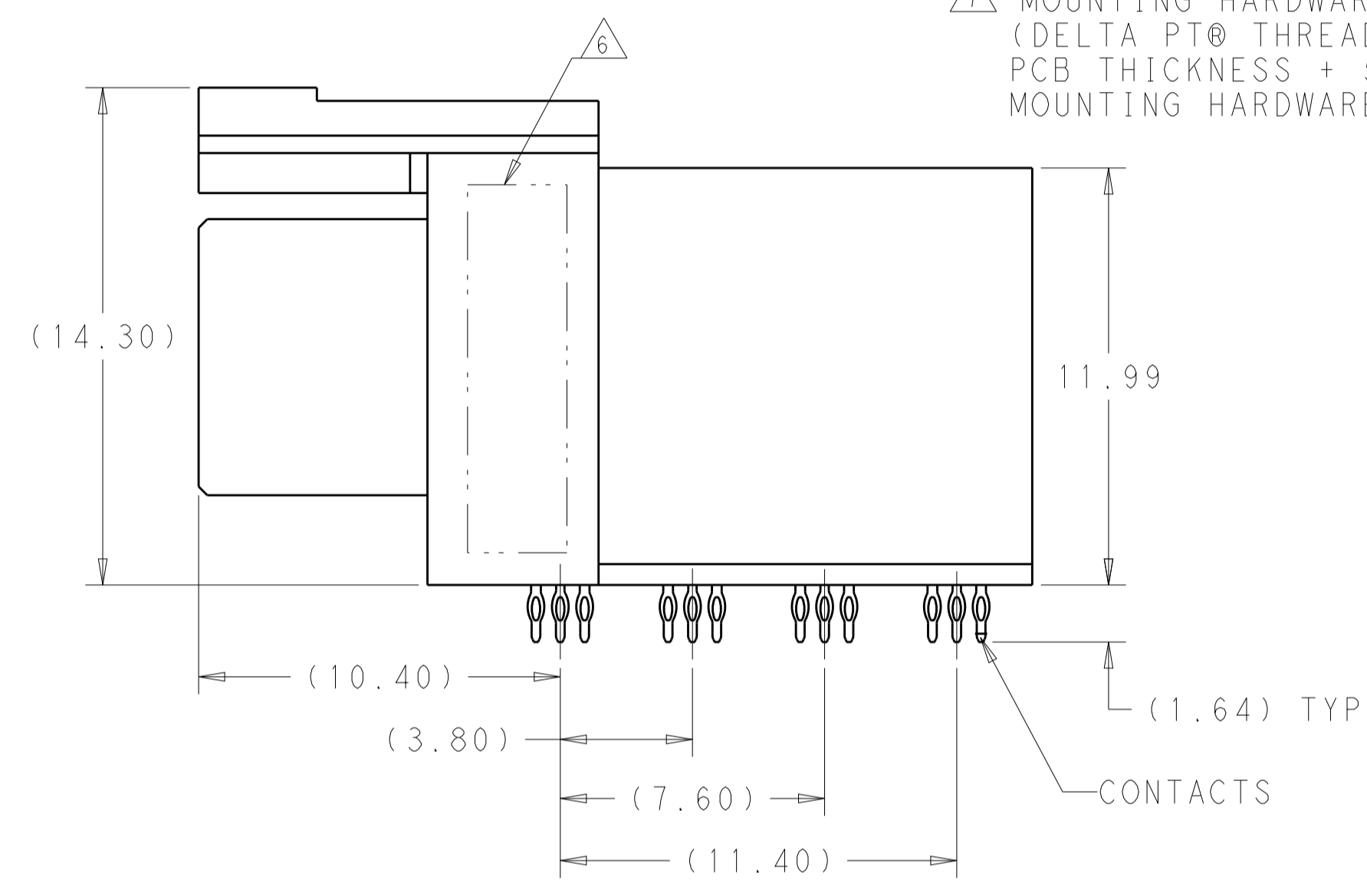
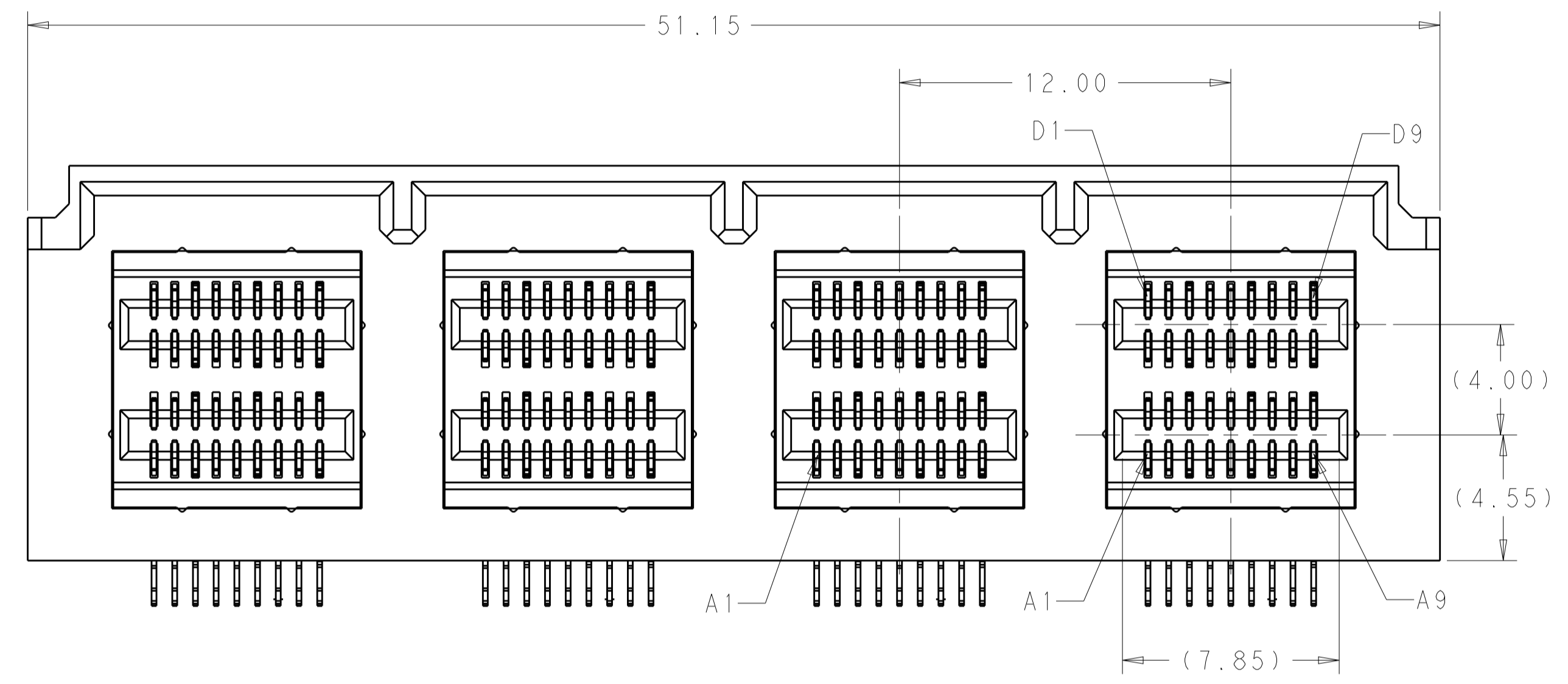


LOC		DIST		REVISIONS			
P	LTN	DESCRIPTION	DATE	DWN	APVD		
A		REVISED PER ECO-15-000199	13JAN2015	AP	DG		
C		REVISED PER ECO-18-008478	10MAY2018	JY	SH		

- 1 MATERIALS
 HOUSINGS AND CHICKLETS: LCP, BLACK, UL94V-0 RATED
 CONTACTS: COPPER ALLOY
- 2 CONTACT FINISH: CONFORMS TO THE REQUIREMENTS OF TE PRODUCT SPECIFICATION, 108-32038. BASED ON EIA/ECA-364-1000.01A. (CONTROLLED ENVIRONMENT APPLICATIONS) ON MATING END. TIN PLATED ON PCB TAIL
- 3. MATES WITH TE PLUG 2227603-1
- 4 MOUNTING HARDWARE M2x1.35 SELF-THREADING SCREW
 SCREW LENGTH OF FASTENER = PCB THICKNESS + 3.0mm MAX (1.75mm MIN)
 MOUNTING HARDWARE IS NOT SUPPLIED BY TE.
- 5 RECOMMENDED COMPONENT KEEP OUT ZONE.
- 6 PART NUMBER AND DATE CODE MARKED IN APPROXIMATE AREA SHOWN ON OPPOSITE SIDE.
- 7 MOUNTING HARDWARE M2x0.0.78 OR M1.8x0.709 SELF-THREADING SCREW (DELTA PT® THREAD-FORMING FASTENER), SCREW LENGTH OF FASTENER = PCB THICKNESS + 5.0mm MAX (1.75mm MIN), MOUNTING HARDWARE IS NOT SUPPLIED BY TE.



SCALE 4:1

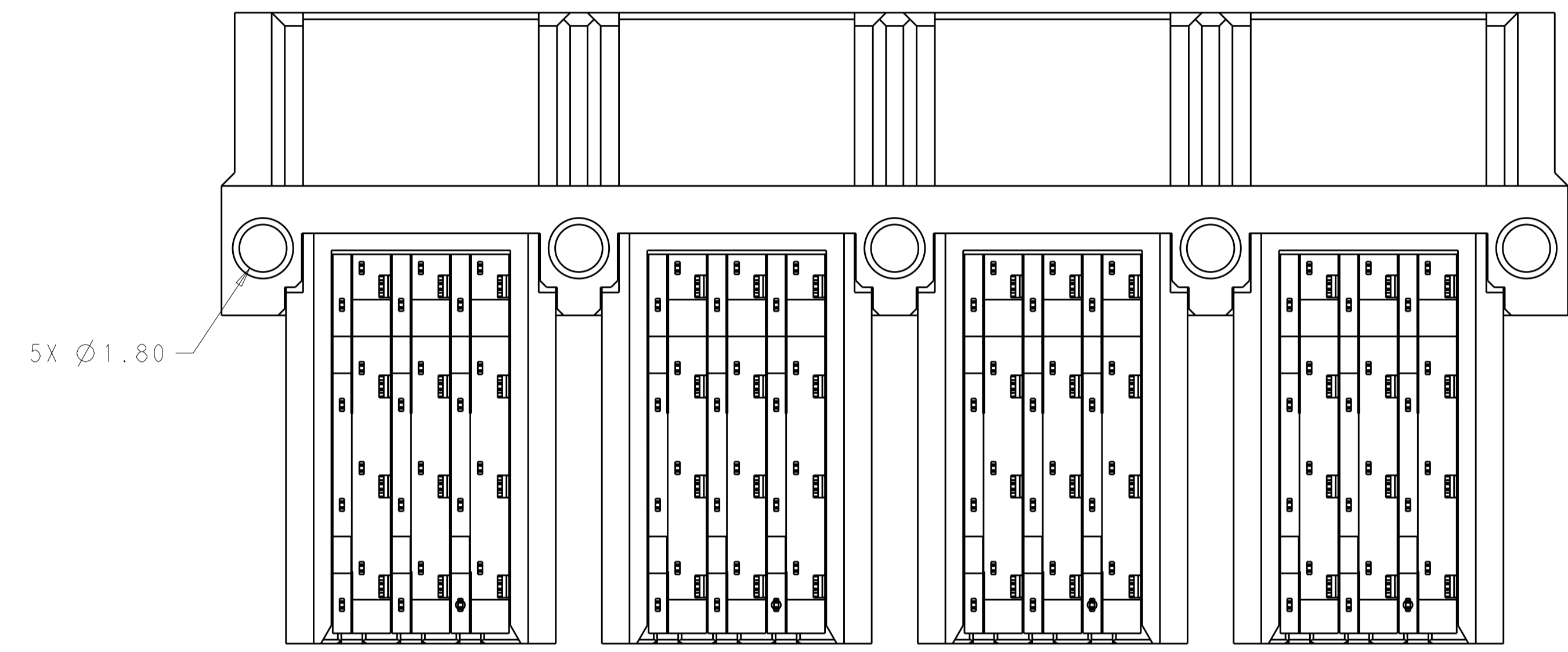
7	Ø1.60	2227582-2
4	Ø1.80	2227582-1
SCREW APPLICATION	DIAMETER OF SCREW HOLES	PART NUMBER

THIS DRAWING IS A CONTROLLED DOCUMENT.

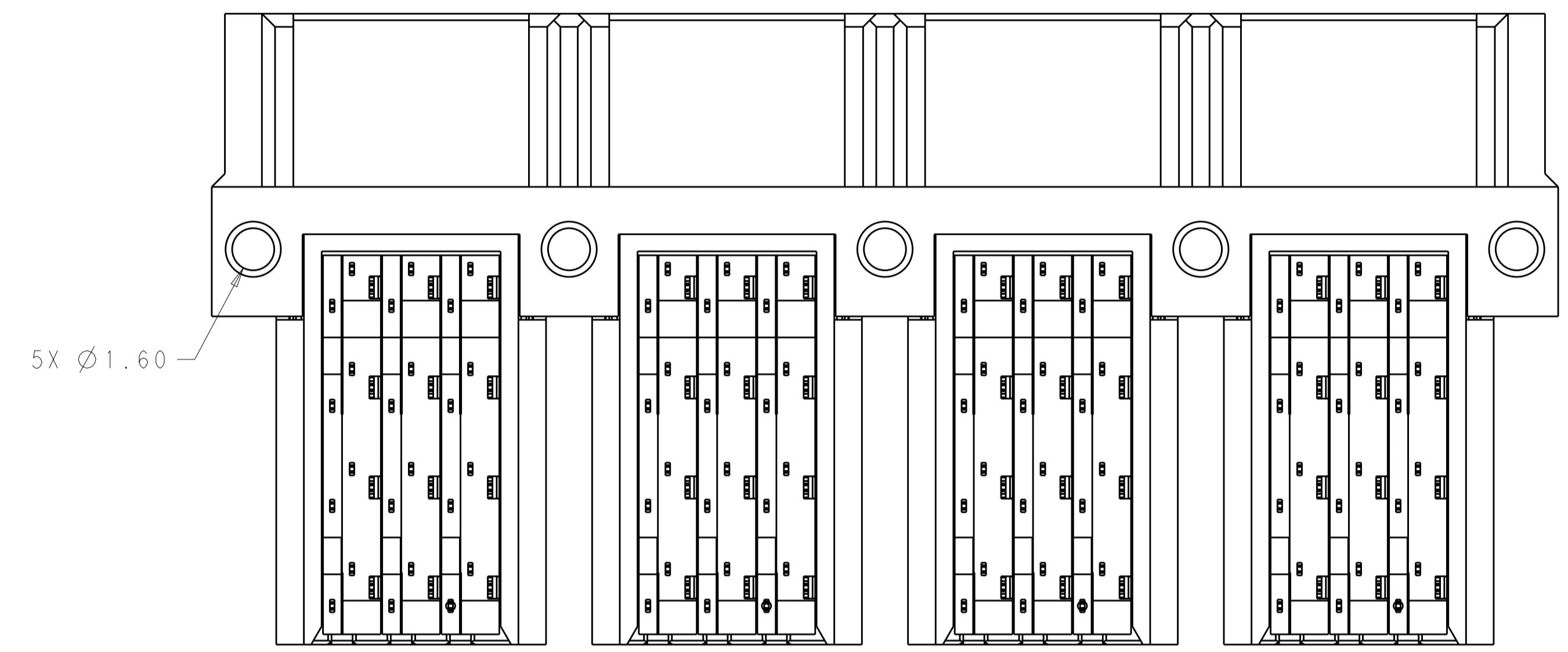
DIMENSIONS:	TOLERANCES UNLESS OTHERWISE SPECIFIED:	DWN: R. TREA 20DEC2012	NAME: RECEPTACLE ASSEMBLY, 1X4, RIGHT ANGLE, INTERNAL MINI-SAS HD
mm	0 PLC ±	CHK: R. HENRY 20DEC2012	PRODUCT SPEC: 108-32038
	1 PLC ±0.13	APVD: -	APPLICATION SPEC: 114-32101
	2 PLC ±		SIZE: A1
	3 PLC ±		CAGE CODE: 00779
	4 PLC ±		DRAWING NO: 2227582
	ANGLES ±		RESTRICTED TO: C
MATERIAL:	FINISH:	WEIGHT:	CUSTOMER DRAWING

SCALE 6:1 SHEET 1 OF 3 REV C


LOC	DIST	REVISIONS			
P	LYR	DESCRIPTION	DATE	DWN	APVD
GP	00	- SEE SHEET 1	-	-	-



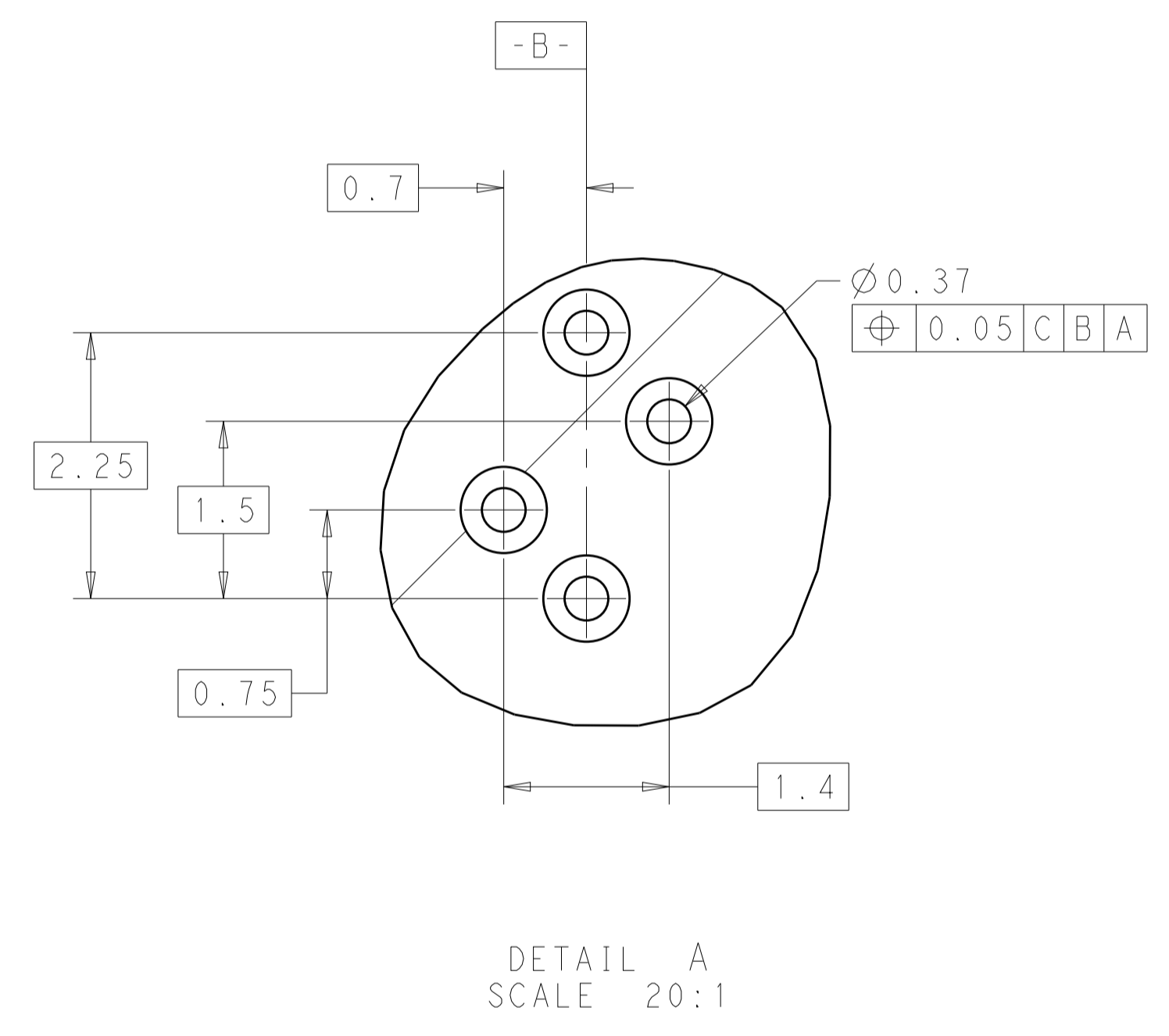
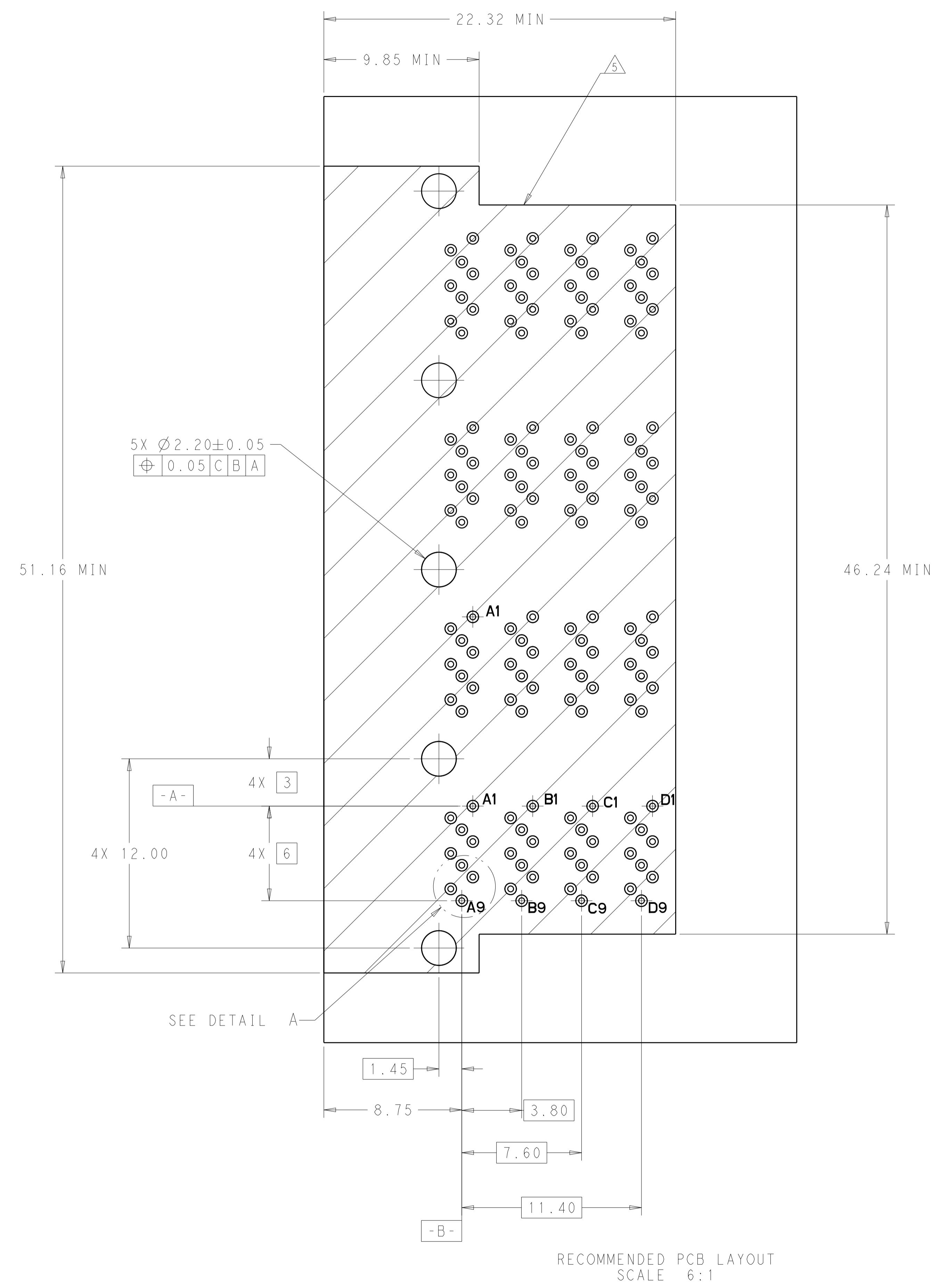
2227582-1
SCALE 6:1



2227582-2
SCALE 6:1

THIS DRAWING IS A CONTROLLED DOCUMENT.		DWN R. IREA 20DEC2012	 TE Connectivity
DIMENSIONS: mm		CHK R. HENRY 20DEC2012	
TOLERANCES UNLESS OTHERWISE SPECIFIED: 0 PLC ± 1 PLC ±0.13 2 PLC ± 3 PLC ± 4 PLC ± ANGLES ± FINISH		APVD -	NAME RECEPTACLE ASSEMBLY, 1X4, RIGHT ANGLE, INTERNAL MINI-SAS HD
MATERIAL		PRODUCT SPEC 108-32038	RESTRICTED TO
		APPLICATION SPEC 114-32101	SIZE CAGE CODE DRAWING NO A100779C=2227582
		WEIGHT	SCALE 6:1 SHEET 2 OF 3 REV C
		CUSTOMER DRAWING	

LOC	DIST	REVISIONS			
P	LTN	DESCRIPTION	DATE	DWN	APVD
-	-	SEE SHEET 1	-	-	-



RECOMMENDED PCB LAYOUT
SCALE 6:1

THIS DRAWING IS A CONTROLLED DOCUMENT.		DWN R. TREA CHK R. HENRY APVD	Z0DEC2012 Z0DEC2012	TE Connectivity
DIMENSIONS: mm		TOLERANCES UNLESS OTHERWISE SPECIFIED: 0 PLC ± 1 PLC ± 2 PLC ±0.13 3 PLC ± 4 PLC ± ANGLES ±		
MATERIAL		PRODUCT SPEC 108-32038 APPLICATION SPEC 114-32101		NAME RECEPTACLE ASSEMBLY, 1X4, RIGHT ANGLE, INTERNAL MINI-SAS HD
FINISH		WEIGHT		SIZE A100779C=2227582
CUSTOMER DRAWING		SCALE 6:1		SHEET 3 OF 3 REV C

X-ON Electronics

Largest Supplier of Electrical and Electronic Components

Click to view similar products for [I/O Connectors](#) category:

Click to view products by [TE Connectivity](#) manufacturer:

Other Similar products are found below :

[571763P](#) [58098-0628](#) [D20419-211](#) [D38999/20FJ24PA L/C](#) [D38999/20FJ29SB L/C](#) [D38999/24FG11SN L/C](#) [72.250.1628.2](#) [72.250.2428.2](#)
[74720-0505](#) [76.350.0729.0](#) [76871-1403](#) [FCN-244F080-G/1](#) [FCN-260A9920](#) [FCN-268D024-G/2F#10X-R10](#) [PCS-E50FA](#) [PCS-XE26LKA](#)
[PCS-XE26MA+](#) [PCS-XES68MS+](#) [G38A71314B](#) [DX40-50P\(55\)](#) [1571250010](#) [157-22500-3](#) [MS3471L14-19P L/C](#) [1888020-8](#) [91-569786-](#)
[35H](#) [91-569786-35M](#) [91-644626-35P](#) [SM3100F14S-58S](#) [172501-4002](#) [172501-6002](#) [FCN-260C008-A/L0](#) [FCN-260C024-AL0](#) [FCN-](#)
[261Z008](#) [FCN-268D008-G/1K](#) [2000314-1](#) [200331-1](#) [2007498-2](#) [PCR-E28LMDAG1+](#) [PCR-E36FC+](#) [PCS-E28FS+](#) [PCS-XE26SLFD+](#) [PCS-](#)
[XE26SLFDT+](#) [G38A71214B](#) [HDRA-E68W1LFDTC-SL+](#) [HDR-E14MSG1+](#) [R88A-CNK81S](#) [CRT1-ATT02](#) [54182-0605](#) [U90B2054081210](#)
[UE86K842720321](#)