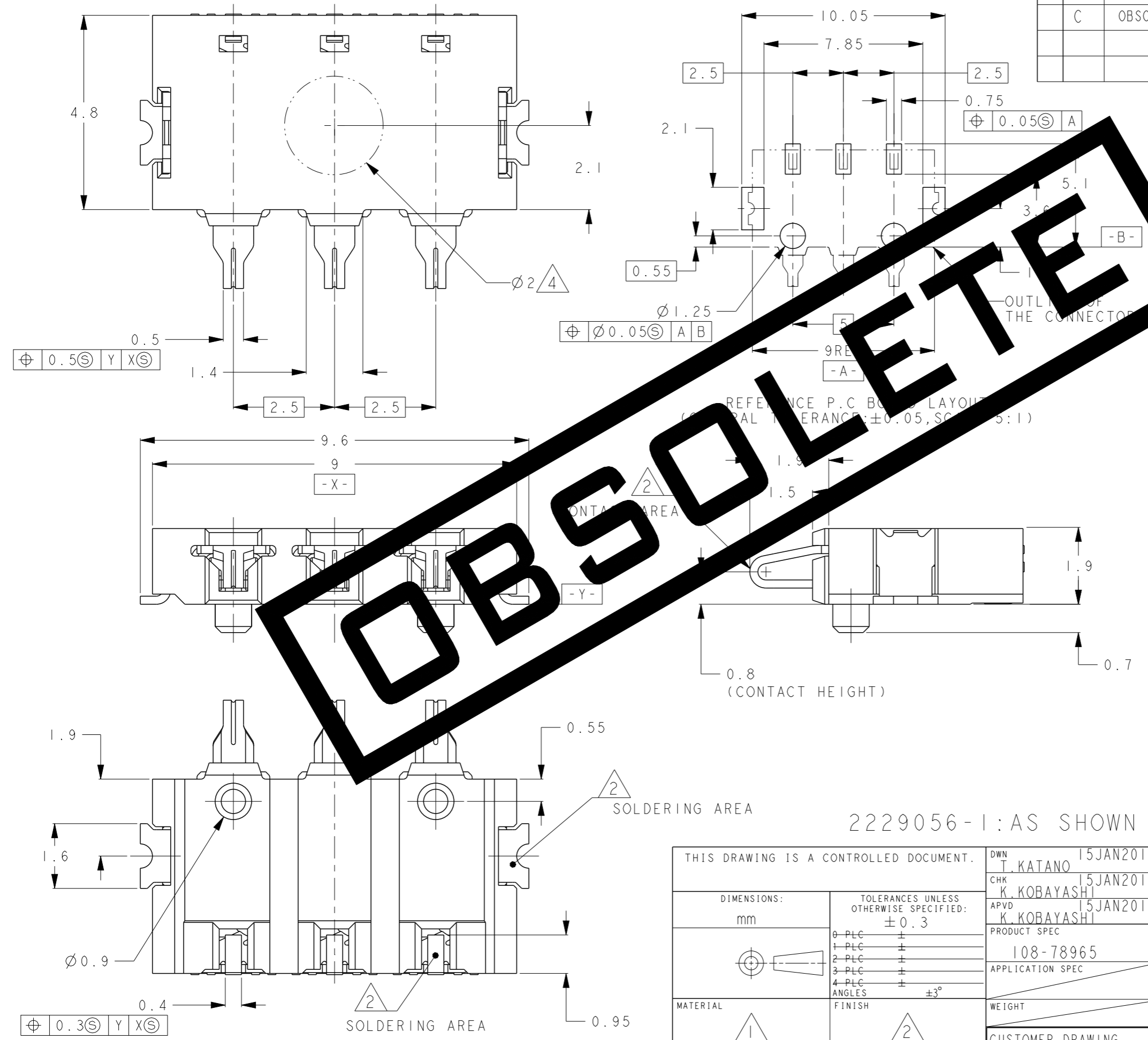


THIS DRAWING IS UNPUBLISHED. RELEASED FOR PUBLICATION 2012  
 © COPYRIGHT 2012 BY - ALL RIGHTS RESERVED.

LOC	DIST	REVISIONS			
P	LTR	DESCRIPTION	DATE	DWN	APVD
J	-				
	B	REVISED	ECR-13-003830	11MAR2013	T.K K.K
	C	OBSOLETE ECR-17-017873		18DEC2017	AL WH



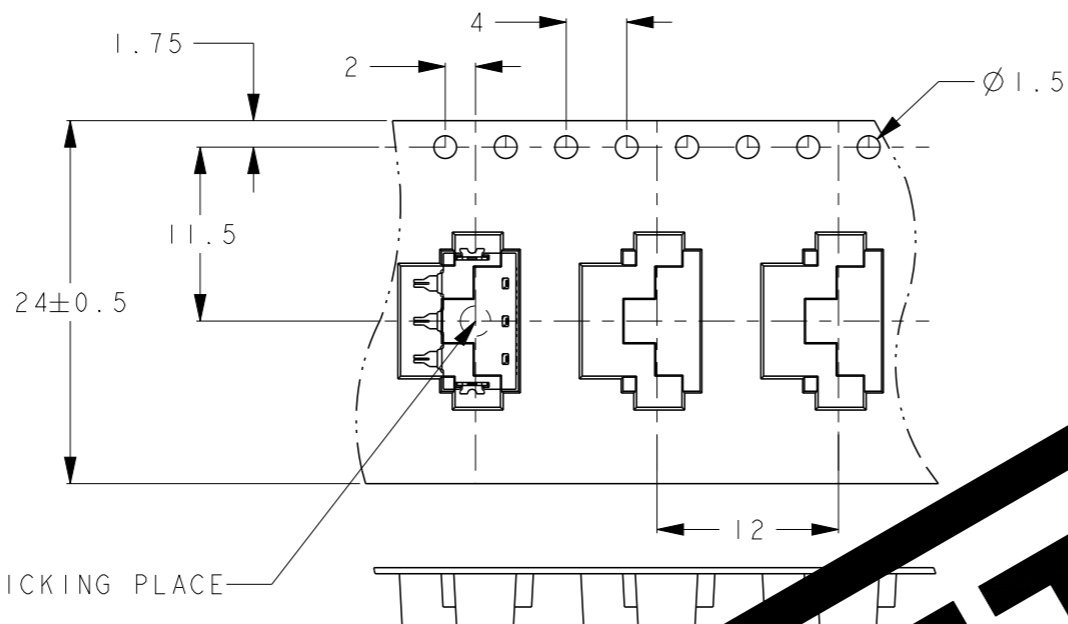
- △ MATERIAL  
 CONTACT: COPPER ALLOY  
 HOUSING: THERMOPLASTIC, UL94V-0, BLACK  
 SOLDER PEG: COPPER ALLOY
- △ FINISH  
 CONTACT: NICKEL ALL OVER UNDER PLATING  
 THICKNESS, 1μm MIN.  
 GOLD PLATING AT CONTACT AREA  
 THICKNESS, 0.3μm MIN.  
 GOLD FLASH PLATING AT SOLDERING AREA  
 THICKNESS, 0.05μm MIN.  
 SOLDER PEG: NICKEL ALL OVER UNDER PLATING  
 THICKNESS, 1μm MIN.  
 GOLD FLASH PLATING AT SOLDERING AREA  
 THICKNESS, 0.05μm MIN.
- 3. COPLANARITY 0.1MAX.
- △ PICK UP AREA
- 5. EMOSS AND COVER TAPE : ESD PROTECTION MATERIAL
- 6. STORAGE LIFE: UNDER 6 MONTHS  
 WITHOUT DRYPACK AND BAKING PROCESS

2229056-1: AS SHOWN

THIS DRAWING IS A CONTROLLED DOCUMENT.		DWN T. KATANO 15JAN2013	TE Connectivity	
DIMENSIONS: mm		CHK K. KOBAYASHI 15JAN2013		
TOLERANCES UNLESS OTHERWISE SPECIFIED: ±0.3		APVD K. KOBAYASHI 15JAN2013	NAME	
0-PLC ± 1-PLC ± 2-PLC ± 3-PLC ± 4-PLC ± ANGLES ±3°		PRODUCT SPEC 108-78965	LOW PROFILE BATTERY CONNECTOR 3 POS. CONTACT HEIGHT 0.8mm	
MATERIAL		APPLICATION SPEC	SIZE A300779	CAGE CODE C-2229056
FINISH		WEIGHT	DRAWING NO	RESTRICTED TO
△ 1 △ 2		CUSTOMER DRAWING	SCALE 10:1	SHEET 1 OF 2 REV C

P	LTR	DESCRIPTION	DATE	DWN	APVD
	-	SEE SHEET 1	-	-	-

→ DIRECTION OFF TOP OF REEL



CENTER OF THE PICKING PLACE

FLANGE CORE DIA  
Ø100REF

Ø330REF  
REEL DIA.

30.4 REF  
REEL WIDTH

24.4REF

300REF  
WITHOUT CHARGE

WITH PRODUCT CHARGE  
1400PCS/REEL

WITHOUT CHARGE  
20HOLES MIN.

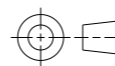
300 REF  
WEED THE COVER TAPE.

165°~180°  
PEELING ANGLE  
0.1~0.7N(300mm/min)  
PEELING STRENGTH

**OBSCOLETE**

THIS DRAWING IS A CONTROLLED DOCUMENT.

DIMENSIONS:  
mm



TOLERANCES UNLESS  
OTHERWISE SPECIFIED:  
± 0.3

Ø PLC	±
1 PLC	±
2 PLC	±
3 PLC	±
4 PLC	±
ANGLES	±3°
FINISH	

MATERIAL

DWN
CHK
APVD
PRODUCT SPEC
APPLICATION SPEC
WEIGHT
CUSTOMER DRAWING



TE Connectivity

NAME  
LOW PROFILE BATTERY CONNECTOR 3 POS.  
CONTACT HEIGHT 0.8mm

SIZE	CAGE CODE	DRAWING NO	RESTRICTED TO
A300779	C	2229056	

SCALE	SHEET	OF	REV
2:1	2	2	C

## X-ON Electronics

Largest Supplier of Electrical and Electronic Components

*Click to view similar products for [Battery Contacts](#) category:*

*Click to view products by [TE Connectivity](#) manufacturer:*

Other Similar products are found below :

[H-843](#) [3.5MM-UNIVERSAL-CONTACT](#) [4030](#) [120220-0310](#) [120220-0311](#) [101267-209](#) [009155003001013](#) [98285-1000](#) [0475070010](#) [72](#)  
[1189](#) [120](#) [120220-0202](#) [120220-0206](#) [1241](#) [113](#) [118](#) [2199206-1](#) [2472](#) [118TR](#) [009155003101008](#) [120220-0204](#) [120TR](#) [2983](#) [117](#) [122TR](#)  
[111](#) [120220-0312](#) [5330TR](#) [009155003741006](#) [122](#) [5331TR](#) [009155002741006](#) [1083TR](#) [498TR](#) [009155004741006](#) [556TR](#)  
[009155005741006](#) [009155006741006](#) [70ADJ-2-FL1G](#) [70ADJ-3-FL1G](#) [1902937-1](#) [497](#) [5203](#) [5219](#) [5225](#) [550](#) [553](#) [555](#) [556](#)