

REVISIONS		LTR	DESCRIPTION	DATE	APPROVED

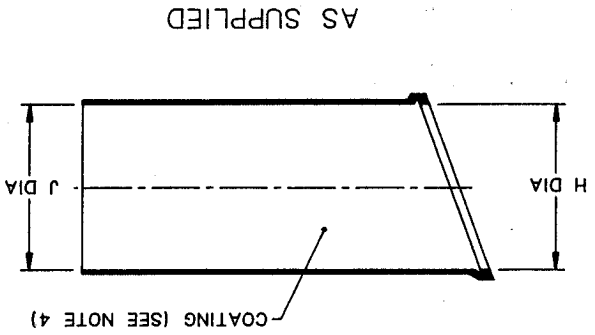
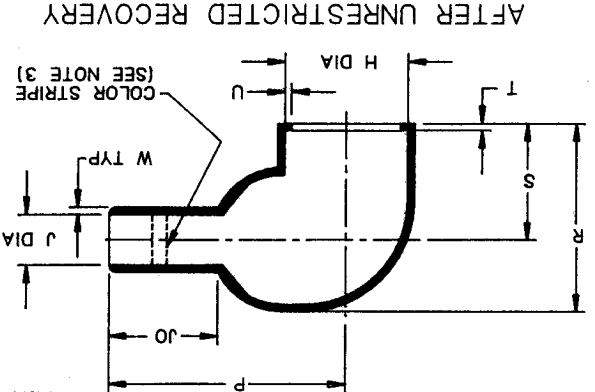


TABLE OF DIMENSIONS

PART NUMBER	-3, -4, -12		MAX	MIN	-3, -4	-12	MAX	MIN	±10%	REF	R	S	T	U	JO	W
	MIN	MAX														
222D121-X-60	.92	.41	.92	.49	.22	.84	.89	.65	.12	.040	.23	.05				
222D132-X-60	1.12	.56	1.12	.58	.26	1.33	1.07	.76	.12	.040	.65	.06				
222D142-X-60	1.22	.70	1.22	.63	.28	1.44	1.22	.83	.12	.040	.50	.07				
222D152-X-60	1.42	.88	1.42	.73	.33	1.72	1.38	.90	.12	.040	.57	.07				
222D163-X-60	1.68	1.11	1.68	.87	.39	2.11	1.73	1.14	.12	.065	.69	.08				
222D174-X-60	2.04	1.36	2.04	1.39	.62	3.07	2.08	1.32	.12	.065	1.32	.13				
222D185-X-60	2.60	1.75	2.60	1.80	.80	3.84	2.60	1.64	.12	.080	1.58	.15				
222D196-X-60	3.22	2.38	3.22	2.25	1.00	4.64	3.30	2.03	.12	.080	1.50	.16				

1. ALL DIMENSIONS ARE IN INCHES

2. DIMENSIONS APPEARING IN TABLE ARE AS FOLLOWS:  
 a - AS SUPPLIED  
 b - AFTER UNRESTRICTED RECOVERY

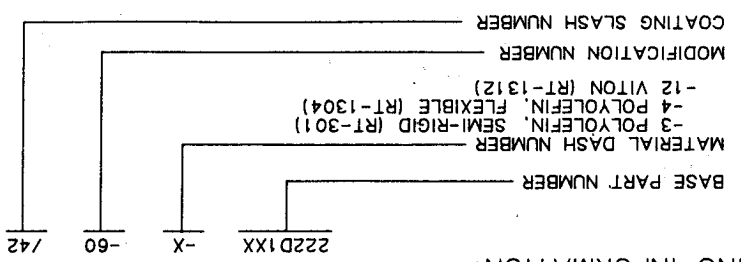
3. PARTS SHALL HAVE COLOR STRIPE .12 WIDE X 360° AROUND OUTSIDE SURFACE APPROX. AS SHOWN AND COLORS SHALL BE AS FOLLOWS:  
 DASH NO.      COLOR  
 -3              WHITE  
 -4              RED  
 -12             YELLOW

4. COATING IS OPTIONAL FOR -3 AND -4 MATERIALS ONLY, AS SUPPLIED DIMENSIONS APPEARING IN TABLE ARE FOR UNCOATED PARTS. WHEN COATING IS ADDED, ENTRY DIAMETERS WILL BE REDUCED BY .06 MAX. PARTS WILL BE COATED WITH S-1017 ADHESIVE WHEN SPECIFIED AS: 222D1XX-X-60/42

SPECIFICATION CONTROL DRAWING (LIMITED DISTRIBUTION)

NOTES:

THIS DRAWING AND THE INFORMATION SET FORTH HEREON ARE THE PROPERTY OF RAYCHEM CORPORATION AND ARE TO BE HELD IN TRUST AND CONFIDENCE. PUBLICATION, DUPLICATION, DISCLOSURE OR USE FOR ANY PURPOSE NOT EXPRESSLY AUTHORIZED IN WRITING BY RAYCHEM CORPORATION IS PROHIBITED.		DO NOT SCALE THIS DRAWING
DRAWN	SEAN MCGARRY	CHECKED
DESIGN APPROVED	S.D.	DATE
APPROVED BY	S.D.	DATE
MANUFACTURING	11/13/16	DATE
QUALITY CONTROL	11/13/16	DATE
SPECIFICATION	11/13/16	DATE
TECHNICAL SERVICES	11/13/16	DATE
PRODUCT MANAGEMENT	11/13/16	DATE
RAYCHEM CORPORATION 300 CONSTITUTION DRIVE MSNLO PARK, CALIFORNIA 94025		TITLE
RAYchem		BOOT, 90° WITH LIP
FSCM CODE NO.	06090	DWG NO.
222D121-X-60		222D121-X-60
THRU 222D196-X-60		222D196-X-60
SHEET	OF	DATE



ORDERING INFORMATION:

## X-ON Electronics

Largest Supplier of Electrical and Electronic Components

*Click to view similar products for [Cable Boots](#) category:*

*Click to view products by [TE Connectivity](#) manufacturer:*

Other Similar products are found below :

[618235-000](#) [622A014-3-0](#) [CX4132-000](#) [879103-4](#) [879515-000](#) [889092](#) [982033-2](#) [R280576000](#) [1300830729](#) [MTPSRBCL-C](#) [1811481-1](#)  
[200W531-3-0](#) [202A121-386-0](#) [202A142-4-00/42-0](#) [202A163-4-0-CS5067](#) [202B221-13-0](#) [202B231-13-0](#) [202B563-25-07-0](#)  
[202C621710CS5361](#) [202D132-4-07/42-0](#) [202D221-4-0-CS5349](#) [202D221-4-26-0](#) [202D263-25-08-0](#) [202D263-4-22/42-0](#) [202D263-4-88-0](#)  
[202D921-2542-0](#) [202E336-71-0](#) [202F211-50-22-0-CS8474](#) [202F242-50-05-0](#) [202F242-51-04/164-0](#) [202K121-25-CS-1858-0](#) [202K121-25-](#)  
[CS-2062-0](#) [202K132-25-01/225-0CS8387](#) [202K153-3-0186-0](#) [202S132-25-UP-0](#) [203W301-3/42-0](#) [207W613-100/184-0-CS5657](#) [207W623-](#)  
[100-01/184-0](#) [207W634-100/184-0-CS5657](#) [207W656-100-01/184-0](#) [207W667-100-01/184-0](#) [207W667-100/184-0](#) [208A011-3-0](#) [208A021-3-](#)  
[0](#) [221A011-51164-0-CS7133](#) [222A121-2586](#) [222A152-342-0](#) [222A213-25-0-CS5613](#) [222D221-25-13/86-0](#) [222D232-4-61-0-CS5078](#)