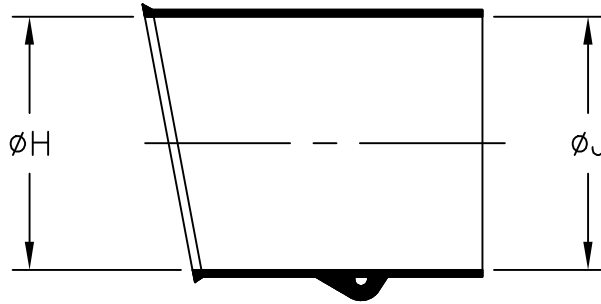


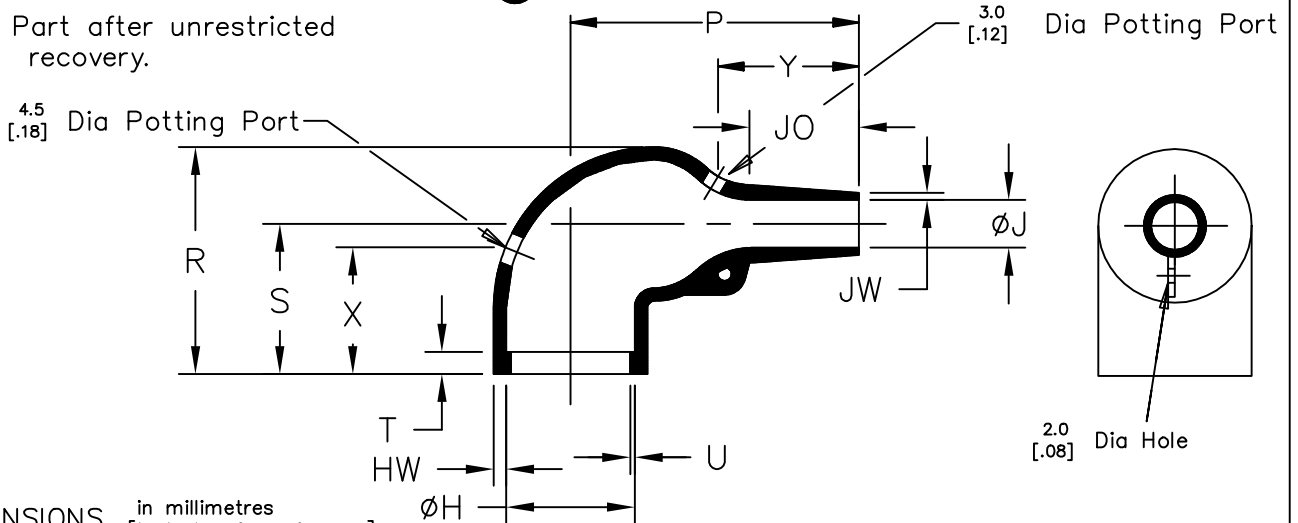
REVISIONS

| P | LTR | DESCRIPTION      | DATE      | DWN | APVD |
|---|-----|------------------|-----------|-----|------|
|   | 13  | PRODUCTION ISSUE | 31JAN2019 | PNT | MT   |

a) Part as supplied.



b) Part after unrestricted recovery.



DIMENSIONS in millimetres  
[in inches, for reference]

| Part No. | H            |                | J            |               | P             | R            | S            | T            | U            | JO             | HW           | JW           | X            | Y            |
|----------|--------------|----------------|--------------|---------------|---------------|--------------|--------------|--------------|--------------|----------------|--------------|--------------|--------------|--------------|
|          | Min<br>a     | Max<br>b       | Min<br>a     | Max<br>b      | ±10%<br>b     | ±10%<br>b    | ±10%<br>b    | ±10%<br>b    | ±10%<br>b    | ±10%<br>b      | ±20%<br>b    | ±20%<br>b    | ±20%<br>b    | ±20%<br>b    |
| 222K121  | 24<br>[.94]  | 10.4<br>[.41]  | 24<br>[.94]  | 5.6<br>[.22]  | 25<br>[.98]   | 25<br>[.98]  | 19<br>[.75]  | 3.0<br>[.12] | 1.0<br>[.04] | 8.5<br>[.33]   | 1.3<br>[.05] | 0.5<br>[.02] | 18<br>[.71]  | 16<br>[.63]  |
| 222K132  | 30<br>[1.18] | 14.2<br>[.56]  | 30<br>[1.18] | 5.9<br>[.23]  | 32<br>[1.26]  | 27<br>[1.06] | 20<br>[.79]  | 3.0<br>[.12] | 1.0<br>[.04] | 8.5<br>[.33]   | 1.5<br>[.06] | 0.8<br>[.03] | 18<br>[.71]  | 20<br>[.79]  |
| 222K142  | 31<br>[1.22] | 18.0<br>[.71]  | 31<br>[1.22] | 7.1<br>[.28]  | 39<br>[1.54]  | 31<br>[1.22] | 21<br>[.83]  | 3.0<br>[.12] | 1.0<br>[.04] | 15.0<br>[.59]  | 1.8<br>[.07] | 1.0<br>[.04] | 18<br>[.71]  | 20<br>[.79]  |
| 222K152  | 36<br>[1.42] | 22.4<br>[.88]  | 36<br>[1.42] | 8.4<br>[.33]  | 46<br>[1.81]  | 38<br>[1.50] | 26<br>[1.02] | 3.0<br>[.12] | 1.0<br>[.04] | 16.0<br>[.63]  | 1.8<br>[.07] | 1.0<br>[.04] | 25<br>[.98]  | 25<br>[.98]  |
| 222K163  | 43<br>[1.69] | 28.2<br>[1.11] | 43<br>[1.69] | 9.9<br>[.39]  | 55<br>[2.17]  | 45<br>[1.77] | 30<br>[1.18] | 3.0<br>[.12] | 1.7<br>[.07] | 17.5<br>[.69]  | 2.0<br>[.08] | 1.0<br>[.04] | 25<br>[.98]  | 30<br>[1.18] |
| 222K174  | 60<br>[2.36] | 35.1<br>[1.38] | 60<br>[2.36] | 15.7<br>[.62] | 80<br>[3.15]  | 54<br>[2.13] | 35<br>[1.38] | 3.0<br>[.12] | 1.7<br>[.07] | 32.0<br>[1.26] | 3.3<br>[.13] | 1.5<br>[.06] | 25<br>[.98]  | 45<br>[1.77] |
| 222K185  | 66<br>[2.60] | 44.5<br>[1.75] | 66<br>[2.60] | 16.8<br>[.66] | 108<br>[4.25] | 68<br>[2.68] | 42<br>[1.65] | 3.0<br>[.12] | 2.0<br>[.08] | 48.0<br>[1.89] | 3.8<br>[.15] | 2.0<br>[.08] | 35<br>[1.38] | 70<br>[2.76] |

THIS DRAWING IS UNPUBLISHED. ALL RIGHTS RESERVED. © COPYRIGHT - TE Connectivity Ltd.

|  |                  |                  |           |                      |                 |           |               |        |
|--|------------------|------------------|-----------|----------------------|-----------------|-----------|---------------|--------|
| DIMENSIONS:<br>mm [INCHES]             | DWN              | PRAVEEN N T      | 31JAN2019 | MATERIAL             | SEE SHEET 2     | FINISH    | -             |        |
|  | CHK              | N NAGAR          | 31JAN2019 | TE Connectivity Ltd. |                 |           |               |        |
| TOLERANCES UNLESS OTHERWISE SPECIFIED: | APVD             | M TAYLOR         | 31JAN2019 |                      |                 |           |               |        |
| 0 PLC ± -                              | PRODUCT SPEC     | -                |           |                      |                 |           |               | NAME   |
| 1 PLC ± -                              | APPLICATION SPEC | -                |           | SIZE                 | A4              | CAGE CODE | 00779         |        |
| 2 PLC ± -                              | WEIGHT           | -                |           | DRAWING NO           | C= 222K1XX-XX-0 |           | RESTRICTED TO | -      |
| 3 PLC ± -                              |                  | CUSTOMER DRAWING |           |                      | SCALE           | DNS       | SHEET         | 1 OF 2 |
| 4 PLC ± -                              |                  |                  |           |                      | REV             | 13        |               |        |

REVISIONS

| P | LTR | DESCRIPTION | DATE | DWN | APVD |
|---|-----|-------------|------|-----|------|
| - | -   | SEE SHEET 1 | -    | -   | -    |

COMPATIBILITY CHART

| Material Dash Number | Material Description       | RT Spec | Coating Slash No. | Coating S No.       |
|----------------------|----------------------------|---------|-------------------|---------------------|
| -3                   | POLYOLEFIN, SEMI-RIGID     | RT-301  | /42, /86, /180    | S1017; S1048; S1030 |
| -4                   | POLYOLEFIN, FLEXIBLE       | RT-1304 | /42, /86, /180    | S1017; S1048; S1030 |
| -25                  | ELASTOMER, FLUID RESISTANT | RW-2070 | /42, /86, /225    | S1017; S1048; S1206 |
|                      |                            |         |                   |                     |

Ordering Information

222K1XX-XX/XX-0

- Color designator
- Adhesive Slash Number (if required see compatibility chart)
- Material Dash Number (see compatibility chart)
- Base Part Number

NOTES

- 1) If eyelet clip (000W212) is required with part then add CS-1858 to description (i.e. 222K132-3-CS-1858-0).
- 2) As supplied dimensions are for uncoated parts, when coating is added entry diameters will reduce by 1.5mm[.06] Max.
- 3) Potting ports are optional, when specified by suffix :- -00 they will be located as shown.
- 4) For -12 SCD see 222K1XX-12.
- 5) For -100 SCD see 222K1XX-100

THIS DRAWING IS UNPUBLISHED. ALL RIGHTS RESERVED. © COPYRIGHT - TE Connectivity Ltd.

|   |                                 |                      |                    |                              |                    |
|---|---------------------------------|----------------------|--------------------|------------------------------|--------------------|
| DIMENSIONS:<br>mm [INCHES]  | DWN<br>PRAVEEN N T<br>31JAN2019 | MATERIAL<br>-        | FINISH<br>-        |                              |                    |
|   | CHK<br>N NAGAR<br>31JAN2019     | TE Connectivity Ltd. |                    |                              |                    |
| TOLERANCES UNLESS OTHERWISE SPECIFIED:<br><br>0 PLC ± -<br>1 PLC ± -<br>2 PLC ± -<br>3 PLC ± -<br>4 PLC ± -<br>ANGLES ± - | APVD<br>M TAYLOR<br>31JAN2019   |                      |                    | NAME<br>BOOT 90 DEG WITH LIP |                    |
|   | PRODUCT SPEC<br>-               | SIZE<br>A4           | CAGE CODE<br>00779 | DRAWING NO<br>C-222K1XX-XX-0 | RESTRICTED TO<br>- |
|   | APPLICATION SPEC<br>-           | WEIGHT               | CUSTOMER DRAWING   |                              |                    |
|   |                                 | SCALE<br>DNS         | SHEET<br>2 OF 2    | REV<br>13                    |                    |

## X-ON Electronics

Largest Supplier of Electrical and Electronic Components

*Click to view similar products for [Heat Shrink Cable Boots & End Caps](#) category:*

*Click to view products by [TE Connectivity](#) manufacturer:*

Other Similar products are found below :

[577159N001](#) [645494-000](#) [CX4132-000](#) [687025-000](#) [705331-000](#) [718446-000](#) [725666N001](#) [729257-000](#) [F27131-000](#) [F85868-000](#) [770-003S106W2](#) [770-013210W1](#) [770-013311](#) [770-013312](#) [806542N001](#) [807507-000](#) [808059-000](#) [808362-000](#) [808618-000](#) [809125-000](#) [809130-000](#) [809218-000](#) [812014-000](#) [812047-000](#) [813166-000](#) [813767N002](#) [814741-000](#) [819117N001](#) [823026-000](#) [823070-000](#) [825002-000](#) [841189N001](#) [861471-000](#) [866647-000](#) [879515-000](#) [937577-000](#) [957073-000](#) [982033-2](#) [A77813-000](#) [R280576000](#) [D96192-000](#) [163549-000](#) [MTPSRBCL-C](#) [1954015-1](#) [200W531-3-0](#) [202A163-4-0-CS5067](#) [202A343-3-00-0](#) [202B221-13-0](#) [202B231-13-0](#) [202B563-25-07-0](#)