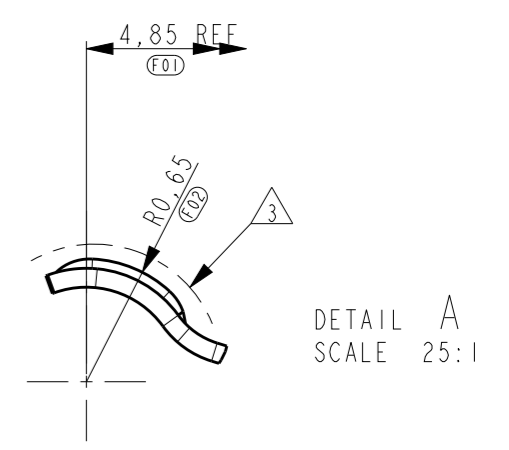
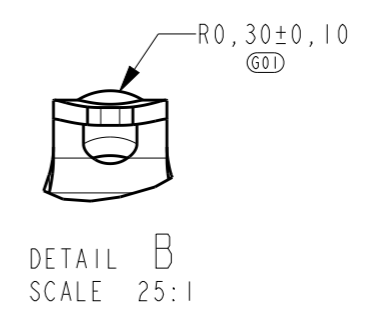
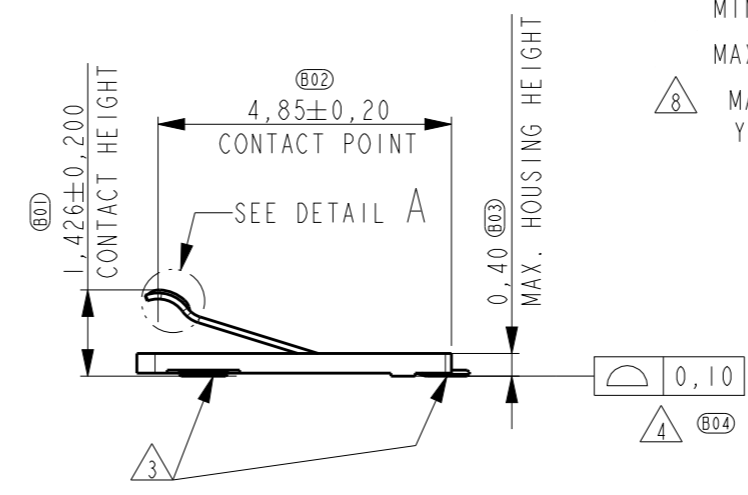
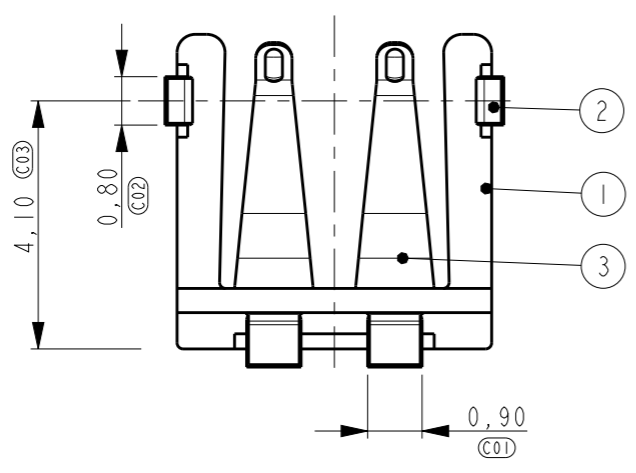
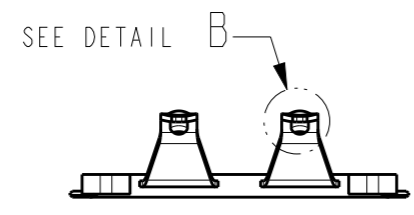
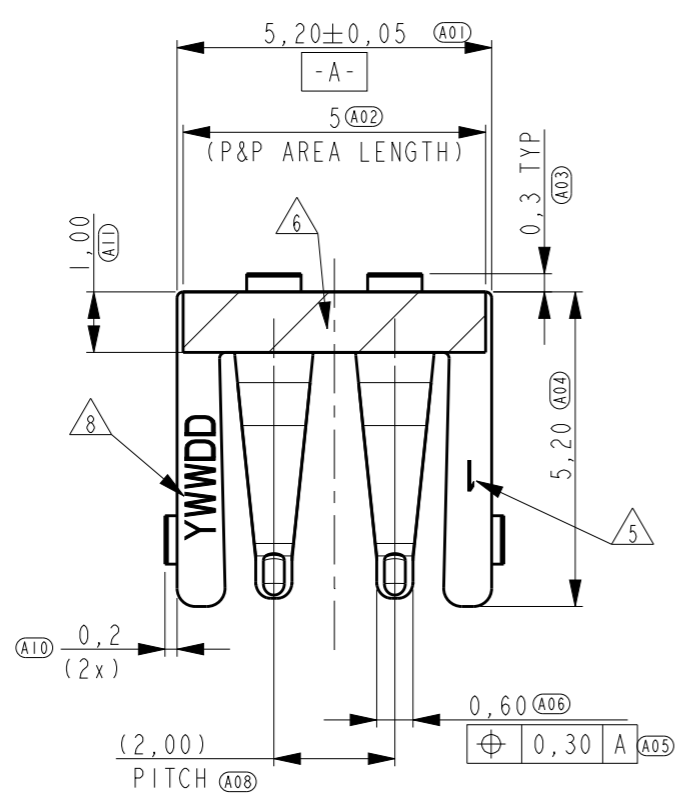


THIS DRAWING IS UNPUBLISHED. RELEASED FOR PUBLICATION
 © COPYRIGHT - BY - ALL RIGHTS RESERVED.

LOC	DIST	REVISIONS			
P	LTR	DESCRIPTION	DATE	DWN	APVD
ES	-	A	INITIAL RELEASE	05SEP2013	RW SY



- NOTES:
- P.N. AS SHOWN 2246092-2.
 - DRAWING REPRESENTS PART VERSION VI.
 - PLATING: - 1,27µm MIN. NICKEL ALL OVER,
- 0,3µm MIN GOLD ON CONTACT POINTS (INDICATED BY DASHED LINE),
- GOLD FLASH ON SOLDER TAILS
 - COPLANARITY OF SOLDER SURFACES 0,10 MAX.
 - MARKING: CAVITY ID, RECESSED.
 - PICK & PLACE SURFACE DEFINED BY HATCHED AREA.
 - CONTACT WORKING HEIGHT 0,70mm±0,30mm,
MIN FORCE 0,20N AT 1,00mm,
MAX FORCE 0,80N AT 0,40mm MEASURED FROM SOLDER SURFACE UP.
 - MARKING: DATE CODE
Y=YEAR, WW=WEEK, DD=DAY&SHIFT

ITEM NO.	DESCRIPTION	MATERIAL	FINISH
3	CONTACT	STAINLESS STEEL	GOLD PLATED
2	SOLDER TAB	STAINLESS STEEL	GOLD PLATED
1	HOUSING	PLASTIC, GF	-

THIS DRAWING IS A CONTROLLED DOCUMENT.

DWN RAY WANG	05SEP2013	STE TE Connectivity	Board to Board Connector		
CHK WENKE HE	05SEP2013				
APVD STEVEN YAO	05SEP2013				
PRODUCT SPEC 108-19386					
MATERIAL -	FINISH -	SIZE A3	CAGE CODE 00779	DRAWING NO C-2246092	RESTRICTED TO -
Customer Drawing		SCALE 8:1	SHEET 1	OF 3	REV A

4

3

2

1

THIS DRAWING IS UNPUBLISHED.

RELEASED FOR PUBLICATION

© COPYRIGHT - BY -

ALL RIGHTS RESERVED.

LOC
ESDIST
-

REVISIONS

P	LTR	DESCRIPTION	DATE	DWN	APVD
-	-	SEE SHEET 1	-	-	-

Diagram showing the recommended PWB lay-out on the solder side. It features two rectangular components on a horizontal line. Dimensions include: 1,10 (001) for the distance from the left edge to the first component; 2,00 (002) PITCH between the two components; 1,20 (004) for the distance from the centerline to the second component; 1,10 (003) for the distance from the centerline to the top edge of the second component; 4,00 (007) for the distance from the centerline to the right edge of the second component; 0,55 (006) for the distance from the right edge of the second component to the right edge of the board; 1,00 (010) for the distance from the left edge to the first component; 3,90 (009) for the total width of the board; and 1,00 (008) for the distance from the centerline to the right edge of the board.

RECOMMENDED PWB LAY-OUT
PWB SOLDER SIDE

FRONT SIDE OF CONNECTOR HOUSING

Diagram showing the recommended PWB lay-out on the contact side. It features two rectangular components on a horizontal line. Dimensions include: 1,00 (E06) for the distance from the left edge to the first component; 0,10 (E05) for the distance from the left edge to the top edge of the first component; 1,00 (E01) for the distance from the left edge to the centerline; 2,00 (E03) for the distance between the two components; and 1,00 (E02) for the distance from the centerline to the right edge of the board. A dashed line indicates the front side of the connector housing.

RECOMMENDED PWB LAY-OUT
PWB CONTACT SIDE

FRONT SIDE OF CONNECTOR HOUSING

THIS DRAWING IS A CONTROLLED DOCUMENT.

DWN
RAY WANG 05SEP2013CHK
WENKE HE 05SEP2013APVD
STEVEN YAO 05SEP2013PRODUCT SPEC
-APPLICATION SPEC
-WEIGHT
-

Customer Drawing

STE

TE Connectivity

NAME
Board to Board Connector

SIZE CAGE CODE DRAWING NO RESTRICTED TO

A3 00779 C-2246092

SCALE 8:1 SHEET 2 OF 3 REV A

DIMENSIONS:

mm

TOLERANCES UNLESS OTHERWISE SPECIFIED:

0 PLC	±0,20
1 PLC	±0,10
2 PLC	±0,05
3 PLC	±-
4 PLC	±-
ANGLES	±-

MATERIAL

-

FINISH

-

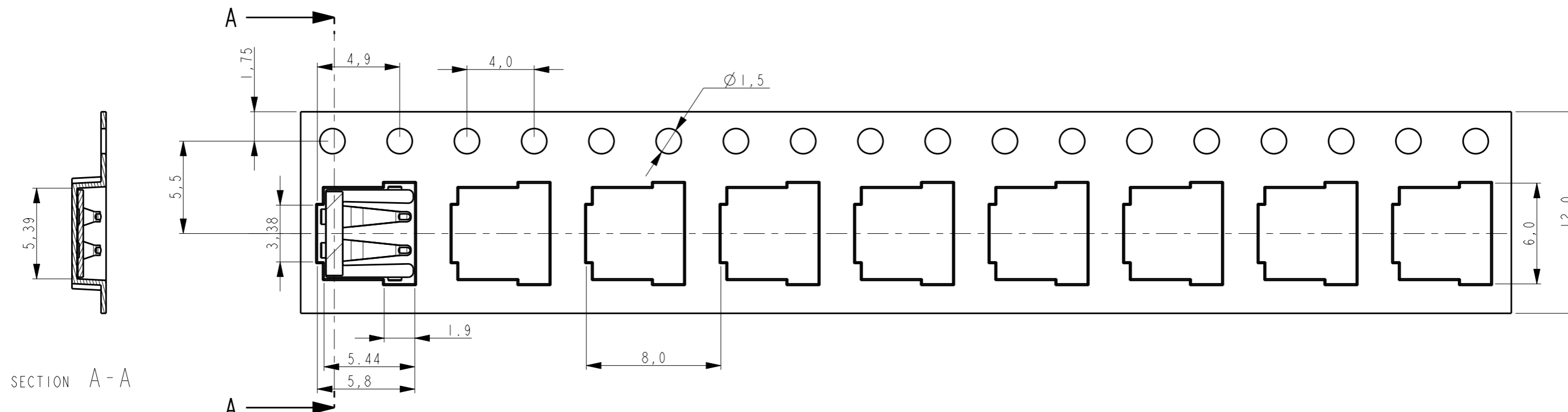
1470-19 (3/11)

THIS DRAWING IS UNPUBLISHED.

RELEASED FOR PUBLICATION

© COPYRIGHT - BY - ALL RIGHTS RESERVED.

LOC	DIST	REVISIONS			
P	LTR	DESCRIPTION	DATE	DWN	APVD
	-	SEE SHEET 1	-	-	-




SECTION A-A

USER DIRECTION OF UNREELING ←

NOTES:

- REEL DIMENSIONS: 330x100x12,4
- QTY PER REEL: 4000PCS.

THIS DRAWING IS A CONTROLLED DOCUMENT.		DWN RAY WANG 05SEP2013	 TE Connectivity	
DIMENSIONS: mm		CHK WENKE HE 05SEP2013		
TOLERANCES UNLESS OTHERWISE SPECIFIED:		APVD STEVEN YAO 05SEP2013	NAME Board to Board Connector	
0 PLC ±- 1 PLC ±0.10 2 PLC ±0.10 3 PLC ±- 4 PLC ±- ANGLES ±-		PRODUCT SPEC -	RESTRICTED TO -	
MATERIAL -		FINISH -	APPLICATION SPEC -	SIZE A3
		WEIGHT -	WARRANTY Customer Drawing	CAGE CODE 00779
			DRAWING NO C=2246092	SCALE 8:1
				SHEET 3 OF 3
				REV A

X-ON Electronics

Largest Supplier of Electrical and Electronic Components

Click to view similar products for [Board to Board & Mezzanine Connectors](#) category:

Click to view products by [TE Connectivity](#) manufacturer:

Other Similar products are found below :

[589158040000018](#) [MDF7C-18P-2.54DSA\(55\)](#) [FCN-230C068-11](#) [FCN-268F012-G/BD](#) [FCN-268F036-G/BD](#) [FCN-268M012-G/0D](#) [FCN-268M024-G/1D](#) [FCN-723J004/1](#) [MIS-048-01-F-D-DP-K](#) [832-10-034-10-001000](#) [FX4C-80S-1.27DSA](#) [FCN-214Q030-G/0](#) [FCN-234P048-G/0](#) [FCN-235D050-G/C](#) [210-93-314-41-105000](#) [2-22603-0](#) [MDF7-40DP-2.54DSA\(55\)](#) [AXG720047](#) [5031084030](#) [MIT-114-03-F-D-K](#) [55323-1519](#) [DF33-2P-3.3DSA\(24\)](#) [YFT-20-05-H-03-SB-K](#) [503308-3040](#) [026-6203-PDB](#) [027-6203-PDB](#) [069159702701000](#) [10123981-102LF](#) [101A10019X](#) [55650-0588-C](#) [68682-310LF](#) [68684-306](#) [75140-7012](#) [87471-650](#) [194261-1](#) [FCN-268F024-G0D](#) [10124054-515LF](#) [68685-603](#) [8-1616154-3](#) [MIS-019-01-F-D](#) [FCN-268M024-G/3D](#) [20021832-06016C1LF](#) [KX15-20KLDL-E1000E](#) [MDF7-16DP-2.54DSA\(55\)](#) [AXE810124](#) [FCN-214J100-G/0](#) [FCN-230C068-E/S](#) [AXE812124](#) [AXE816124](#) [AXE720127](#)