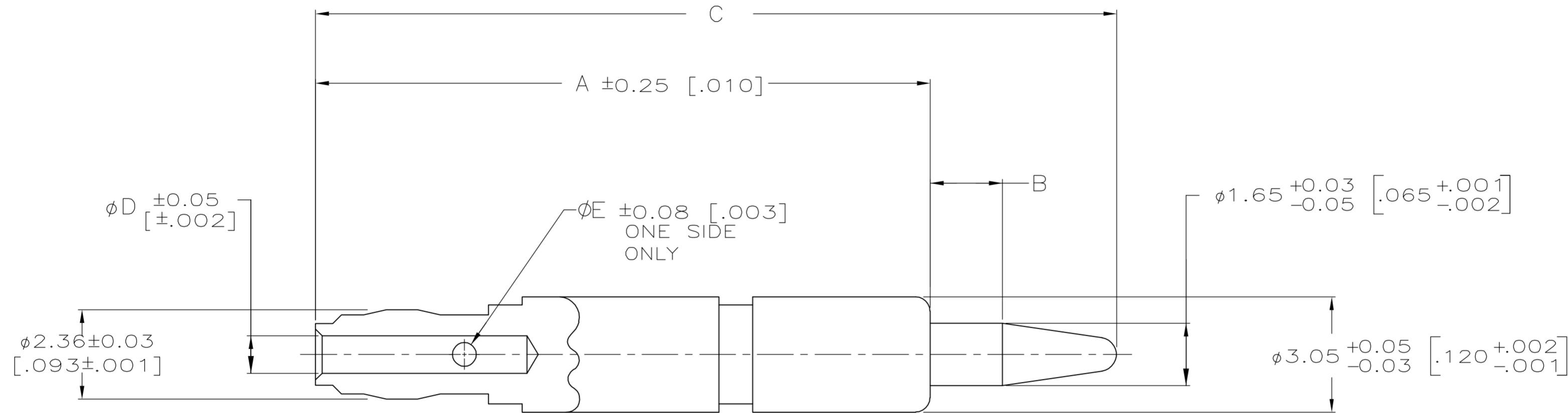


THIS DRAWING IS UNPUBLISHED. RELEASED FOR PUBLICATION
 © COPYRIGHT BY TYCO ELECTRONICS CORPORATION. ALL RIGHTS RESERVED.

LOC	DIST	REVISIONS					
AJ	16	P	LTR	DESCRIPTION	DATE	DWN	APVD
		H		REVISED PER EC OS14-0393-04	17AUG05	BM	GM

- ① 2μm [.000075] MINIMUM GOLD PLATE OVER 2.5μm [.000100] MINIMUM COPPER
- ② 0.76μm [.000030] MINIMUM GOLD PLATE OVER 1.27μm [.000050] MINIMUM NICKEL



OBSOLETE	②	-	1.09 [.043]	21.18 [.834]	1.91 [.075]	16.26 [.640]	1-225343-3
	①	-	1.17 [.046]	26.04 [1.025]	3.18 [.125]	20.37 [.802]	1-225343-2
	①	-	0.76 [.030]	26.04 [1.025]	3.18 [.125]	20.37 [.802]	1-225343-0
	①	0.64 [.025]	0.99 [.039]	26.04 [1.025]	3.18 [.125]	20.37 [.802]	225343-8
	①	0.64 [.025]	0.76 [.030]	21.18 [.834]	1.91 [.075]	16.26 [.640]	225343-6
	①	0.64 [.025]	1.09 [.043]	21.18 [.834]	1.91 [.075]	16.26 [.640]	225343-4
	①	0.64 [.025]	0.99 [.039]	21.18 [.834]	1.78 [.070]	16.26 [.640]	225343-2
FINISH		E	D	C	B	A	PART NUMBER

THIS DRAWING IS A CONTROLLED DOCUMENT.

DWN	J.L.GROFT	10-22-93
CHK	R.J.KOBLER	10-22-93
APVD	-	-
PRODUCT SPEC	-	-
APPLICATION SPEC	-	-
WEIGHT	-	-

tyco Electronics Tyco Electronics Corporation
Harrisburg, Pa 17105-3608

CONTACT, MALE, SERIES N & HN

SIZE	A2	CAGE CODE	00779	DRAWING NO	C=225343	RESTRICTED TO	-
SCALE	10:1	SHEET	1	OF	1	REV	H

CUSTOMER DRAWING

X-ON Electronics

Largest Supplier of Electrical and Electronic Components

Click to view similar products for [RF Connectors / Coaxial Connectors](#) category:

Click to view products by [TE Connectivity](#) manufacturer:

Other Similar products are found below :

[R125315120](#) [8915-1511-000](#) [89674-0827](#) [5916-1103-603](#) [0106-001-000](#) [6-0001-3](#) [6001-7071-019](#) [6002-7051-003](#) [6002-7551-202](#) [6059674-1](#) [619550-1](#) [630059-000](#) [M39012/25-0021](#) [M39012/79-3008](#) [M39030/3-01N](#) [M39030/3-03N](#) [M3933/25-29N](#) [M3933/25-36N](#) [6500-7071-046](#) [6501-1071-002](#) [M83723/72W24576](#) [M83723/72W2457N](#) [6769](#) [CX050L2AQ](#) [7002-1541-010](#) [7003-1572-002](#) [7004-1512-000](#) [7009-1511-004](#) [7010-1511-000](#) [7029-1511-060](#) [7101-1541-010](#) [7101-1571-002](#) [7105-1521-002](#) [7145-1521-002](#) [7209-1511-011](#) [7210-1511-012](#) [7210-1511-015](#) [7210-1511-019](#) [7210-1511-040](#) [7225-1512-050](#) [7242-1511-000](#) [73137-5015](#) [73216-2241](#) [73251-0111](#) [73251-0672](#) [73276-1501](#) [73366-0013](#) [73404-2300](#) [73413-6080](#) [734151610](#)