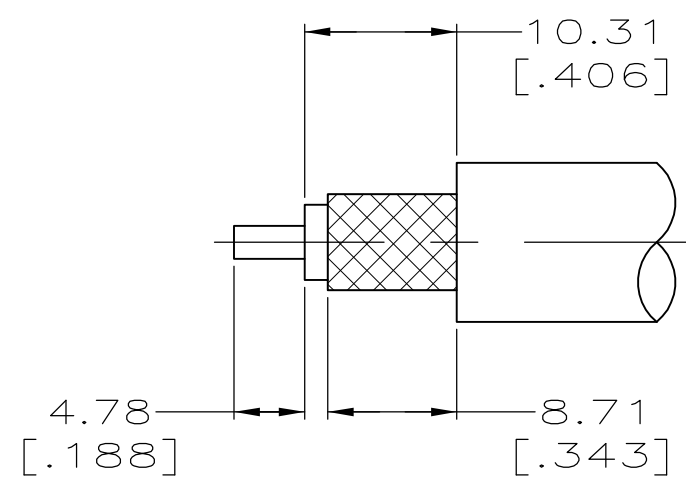


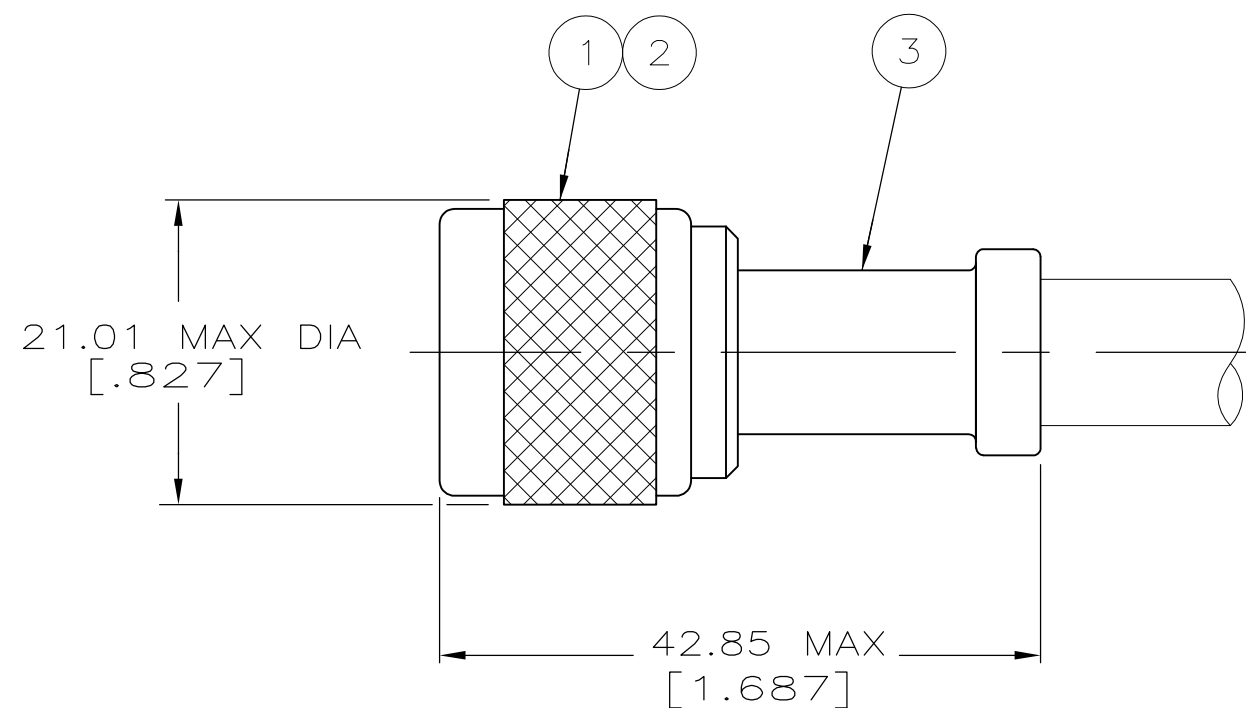
THIS DRAWING IS UNPUBLISHED. RELEASED FOR PUBLICATION
 © COPYRIGHT BY TYCO ELECTRONICS CORPORATION. ALL RIGHTS RESERVED.

| LOC | DIST | REVISIONS | | | | | |
|-----|------|-----------|-----|---------------------------|-----------|-----|------|
| | | P | LTR | DESCRIPTION | DATE | DWN | APVD |
| AJ | 16 | | E1 | REVISED PER ECO-06-018713 | 30AUG2006 | MC | JH |
| | | | E2 | REVISED PER ECO-09-020689 | 31AUG09 | KK | AEG |
| | | | E3 | REVISED PER ECO-12-008922 | 06SEP12 | MGM | WM |

- 1. CRIMP TOOL: 220045-2
- △ 2. SEE SEPERATE RESTRICTED CUSTOMER DRAWING WITH THIS PART NUMBER
- 3. SEE I.S. 2028-1
- △ 4. OBSOLETE PARTS: OBSOLETE CIS STREAMLINING PER D.RENAUD/D.SINISI



RECOMMENDED STRIP LENGTH



| | | | | | | |
|------------------------|-----------------------------------|--------------|--------------------|--------------------|----------------------|-------------|
| OBSOLETE | - | - | - | - | - | 1-225392-0 |
| △ 4 OBSOLETE | RG-58A/U & 58C/U (BSX 7002-58C/U) | 225392-7 AMP | 225560-2 | 225343-2 | 225412-2 | 225392-7 |
| OBSOLETE | - | - | - | - | - | 225392-5 |
| SUPERSEDED BY 225392-2 | | | | | | |
| OBSOLETE | - | - | - | - | - | 225392-4 |
| OBSOLETE | RG-142/U,142A/U & 142B/U | 225392-2 AMP | 9-225560-4 | 225343-4 | 225412-1 | 225392-2 |
| OBSOLETE | RG-55/U & 223/U | 225392-1 AMP | 225560-1 | 225343-2 | 225412-1 | 225392-1 |
| | CABLE SIZE | STAMPING | ③ FERRULE QTY=1 | ② CONTACT QTY=1 | ① PLUG ASSY QTY=1 | PART NUMBER |

THIS DRAWING IS A CONTROLLED DOCUMENT.

| | | |
|------------------|------------|-------------------|
| DWN | B. SCOTT | 07-11-91 |
| CHK | B. MOYER | 12-13-91 |
| APVD | - | - |
| PRODUCT SPEC | 108-12019 | |
| APPLICATION SPEC | - | |
| WEIGHT | 1.2 OZ MAX | A2 00779 C=225392 |
| CUSTOMER DRAWING | SCALE 2:1 | SHEET 1 of 1 |

Tyco Electronics Tyco Electronics Corporation
Harrisburg, PA 17105-3608

PLUG, WEATHERPROOF, SERIES N

RESTRICTED TO -

REV E3

X-ON Electronics

Largest Supplier of Electrical and Electronic Components

Click to view similar products for [RF Connectors](#) / [Coaxial Connectors](#) category:

Click to view products by [TE Connectivity](#) manufacturer:

Other Similar products are found below :

[R125315120](#) [8915-1511-000](#) [89674-0827](#) [5916-1103-603](#) [6-0001-3](#) [6001-7071-019](#) [6002-7051-003](#) [6002-7551-202](#) [6059674-1](#) [619550-1](#)
[630059-000](#) [M39012/25-0021](#) [M39012/79-3008](#) [M39030/3-01N](#) [M39030/3-03N](#) [M3933/25-36N](#) [6500-7071-046](#) [M83723/72W24576](#)
[M83723/72W2457N](#) [6769](#) [CX050L2AQ](#) [7002-1541-010](#) [7002-1572-002](#) [7003-1572-002](#) [7010-1511-000](#) [7029-1511-060](#) [7101-1541-010](#)
[7101-1571-002](#) [7105-1521-002](#) [7145-1521-002](#) [7209-1511-011](#) [7210-1511-015](#) [7210-1511-019](#) [7225-1512-050](#) [7242-1511-000](#) [73137-5015](#)
[73251-0111](#) [73251-0672](#) [7325-1512-000](#) [73276-1501](#) [73366-0013](#) [73404-2300](#) [73413-6080](#) [73415-5721](#) [7405-1521-005](#) [7405-1521-802](#)
[7406-1521-005](#) [804S01D04M040](#) [8145-1521-002](#) [81590](#)