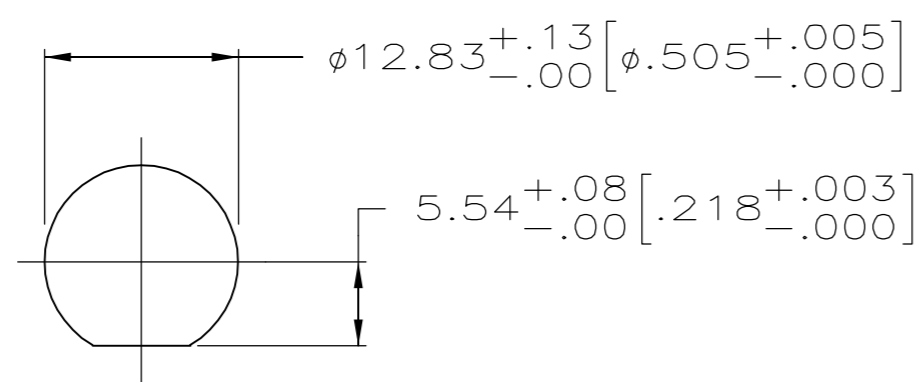
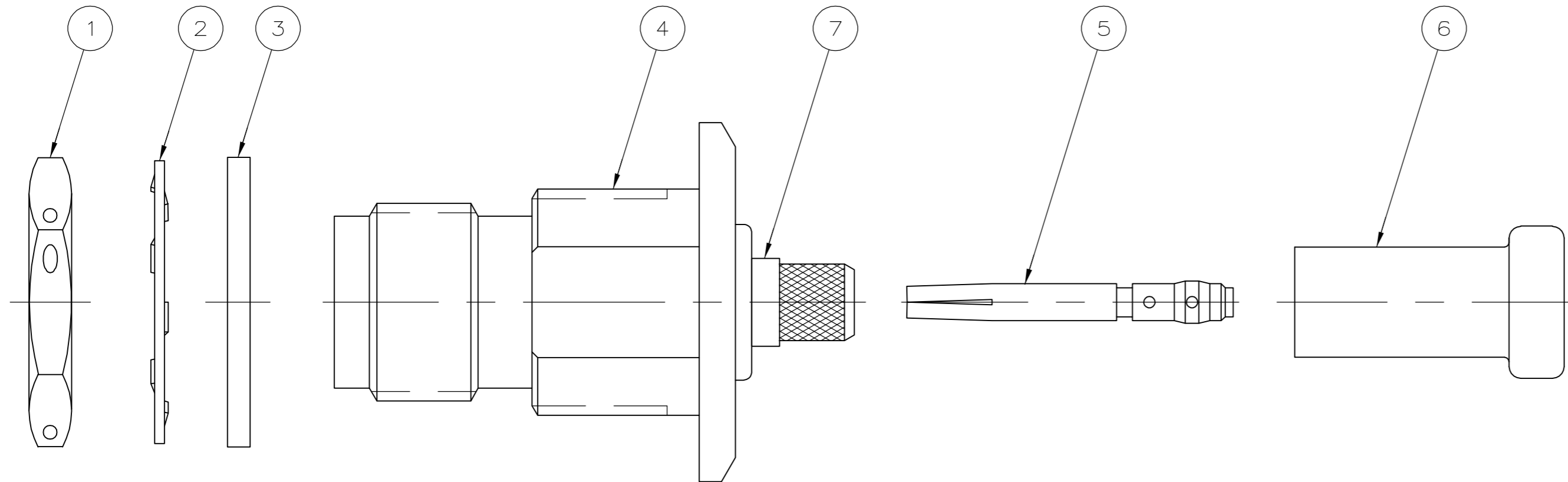


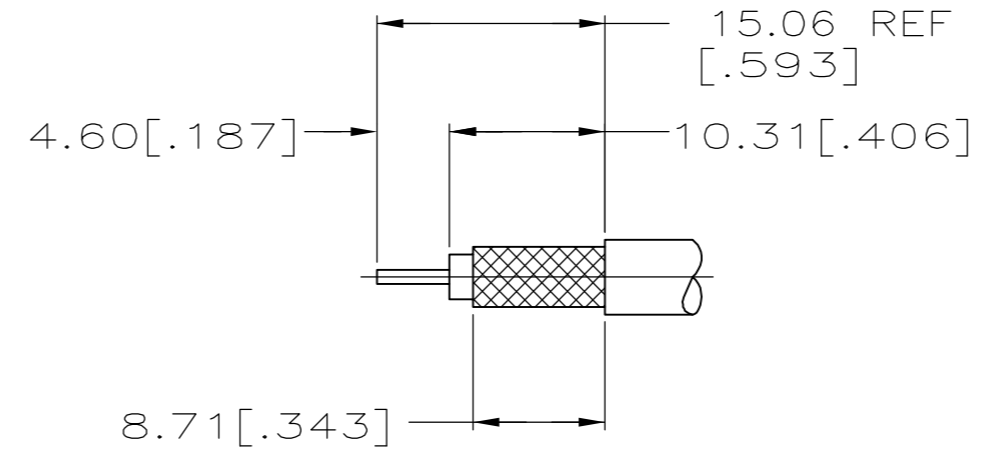
THIS DRAWING IS UNPUBLISHED. RELEASED FOR PUBLICATION
 © COPYRIGHT BY TYCO ELECTRONICS CORPORATION. ALL RIGHTS RESERVED.

LOC	DIST	REVISIONS					
AJ	00	P	LTR	DESCRIPTION	DATE	DWN	APVD
		G1		REV PER ECO 06-029805	2/6/2007	DW	JL

1. SEE IS 2299-3



RECOMMENDED PANEL CUTOUT



RECOMMENDED STRIP LENGTH

OBSOLETE	220045-2	RG-58A/U & 58C/U	225592-1	9-225560-1	225471-4	225475-2	329633	1-329632-2	1-329631-2	9-225557-0	
OBSOLETE	220015-1	RG-225/U	332022	1-331987-4	225471-7	5-225601-1	329633	1-329632-2	1-329631-2	1-225557-0	
OBSOLETE	220015-1	RG-115A/U	332022	9-331987-0	225599-1	5-225601-0	329633	1-329632-2	1-329631-2	225557-9	
OBSOLETE	220015-1	RG-9/U,9A/U & 214/U	332022	1-331987-4	225599-1	5-225601-1	329633	1-329632-2	1-329631-2	225557-8	
OBSOLETE	220015-1	RG-9/U,9A/U & 213/U	332022	9-331987-0	225599-1	5-225601-1	329633	1-329632-2	1-329631-2	225557-7	
	220045-2	RG-142/U & 142B/U	225592-1	9-225560-0	225471-6	225475-2	329633	1-329632-2	1-329631-2	225557-6	
OBSOLETE	220045-2	RG-141/U & 141A/U	225592-1	9-225560-1	225471-6	225475-2	329633	1-329632-2	1-329631-2	225557-5	
OBSOLETE	220045-3	RG-71B/U	225592-3	1-225560-0	225471-5	225475-4	329633	1-329632-2	1-329631-2	225557-4	
SUPSD BY	225401-3	220045-3	RG-59B/U & 62B/U	225592-3	225560-9	225471-5	225475-4	329633	1-329632-2	1-329631-2	225557-3
OBSOLETE	220045-2	RG-58A/U & 58C/U	225592-1	9-225560-1	225471-4	225475-2	329633	1-329632-2	1-329631-2	225557-2	
OBSOLETE	220045-2	RG-55A/U & 223/U	225592-2	9-225560-0	225471-4	225475-2	329633	1-329632-2	1-329631-2	225557-1	
		CRIMP WITH TOOL	CABLE SIZE	⑦ SEAL QTY=1	⑥ FERRULE QTY=1	⑤ CONTACT QTY=1	④ JACK ASSY QTY=1	③ GASKET QTY=1	② LOCKWASHER QTY=1	① JAM NUT QTY=1	PART NUMBER

THIS DRAWING IS A CONTROLLED DOCUMENT.

DIMENSIONS: mm [INCHES]	TOLERANCES UNLESS OTHERWISE SPECIFIED:	DWN M. OBRINE 03JUN98	Tyco Electronics Corporation Harrisburg, PA 17105-3608
	0 PLC ± -	CHK S. BURKHOLDER 03JUN98	
	1 PLC ± -	APVD S. BURKHOLDER 03JUN98	
	2 PLC ± -	PRODUCT SPEC	
MATERIAL	FINISH	3 PLC ± -	NAME
		4 PLC ± -	APPLICATION SPEC
		ANGLES ± -	WEIGHT
			SIZE A2
			CAGE CODE 00779
			DRAWING NO C=225557
			RESTRICTED TO
			SCALE 4:1
			SHEET 1 of 1
			REV G1

CUSTOMER DRAWING

X-ON Electronics

Largest Supplier of Electrical and Electronic Components

Click to view similar products for [RF Connectors](#) / [Coaxial Connectors](#) category:

Click to view products by [TE Connectivity](#) manufacturer:

Other Similar products are found below :

[R125315120](#) [8915-1511-000](#) [89674-0827](#) [5916-1103-603](#) [6-0001-3](#) [6001-7071-019](#) [6002-7051-003](#) [6002-7551-202](#) [6059674-1](#) [619550-1](#)
[630059-000](#) [M39012/25-0021](#) [M39012/79-3008](#) [M39030/3-01N](#) [M39030/3-03N](#) [M3933/25-36N](#) [6500-7071-046](#) [M83723/72W24576](#)
[M83723/72W2457N](#) [6769](#) [CX050L2AQ](#) [7002-1541-010](#) [7002-1572-002](#) [7003-1572-002](#) [7010-1511-000](#) [7029-1511-060](#) [7101-1541-010](#)
[7101-1571-002](#) [7105-1521-002](#) [7145-1521-002](#) [7209-1511-011](#) [7210-1511-015](#) [7210-1511-019](#) [7225-1512-050](#) [7242-1511-000](#) [73137-5015](#)
[73251-0111](#) [73251-0672](#) [7325-1512-000](#) [73276-1501](#) [73366-0013](#) [73404-2300](#) [73413-6080](#) [73415-5721](#) [7405-1521-005](#) [7405-1521-802](#)
[7406-1521-005](#) [804S01D04M040](#) [8145-1521-002](#) [81590](#)