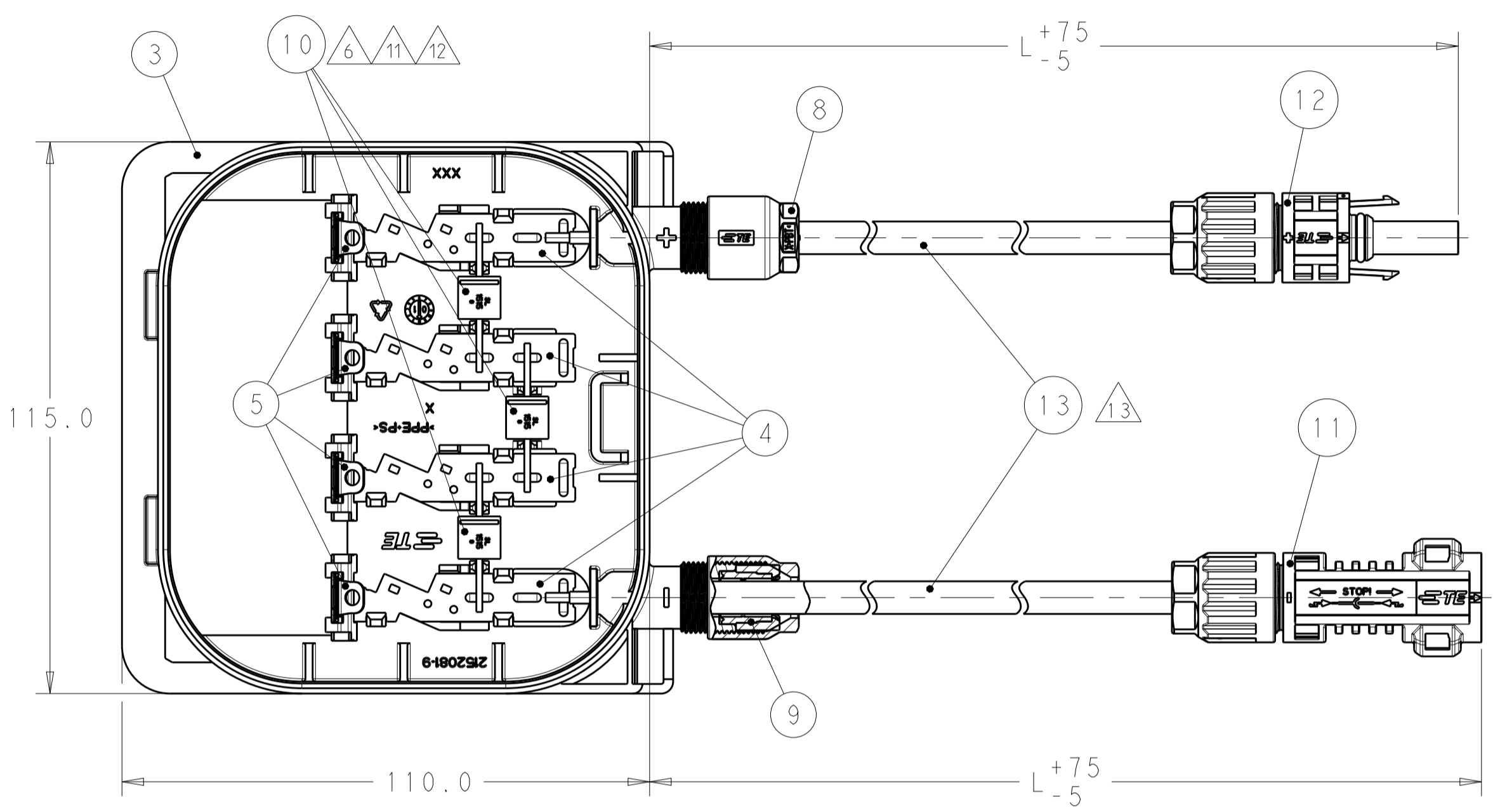
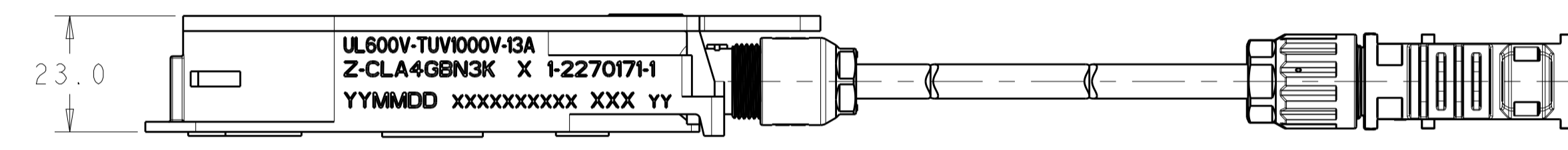
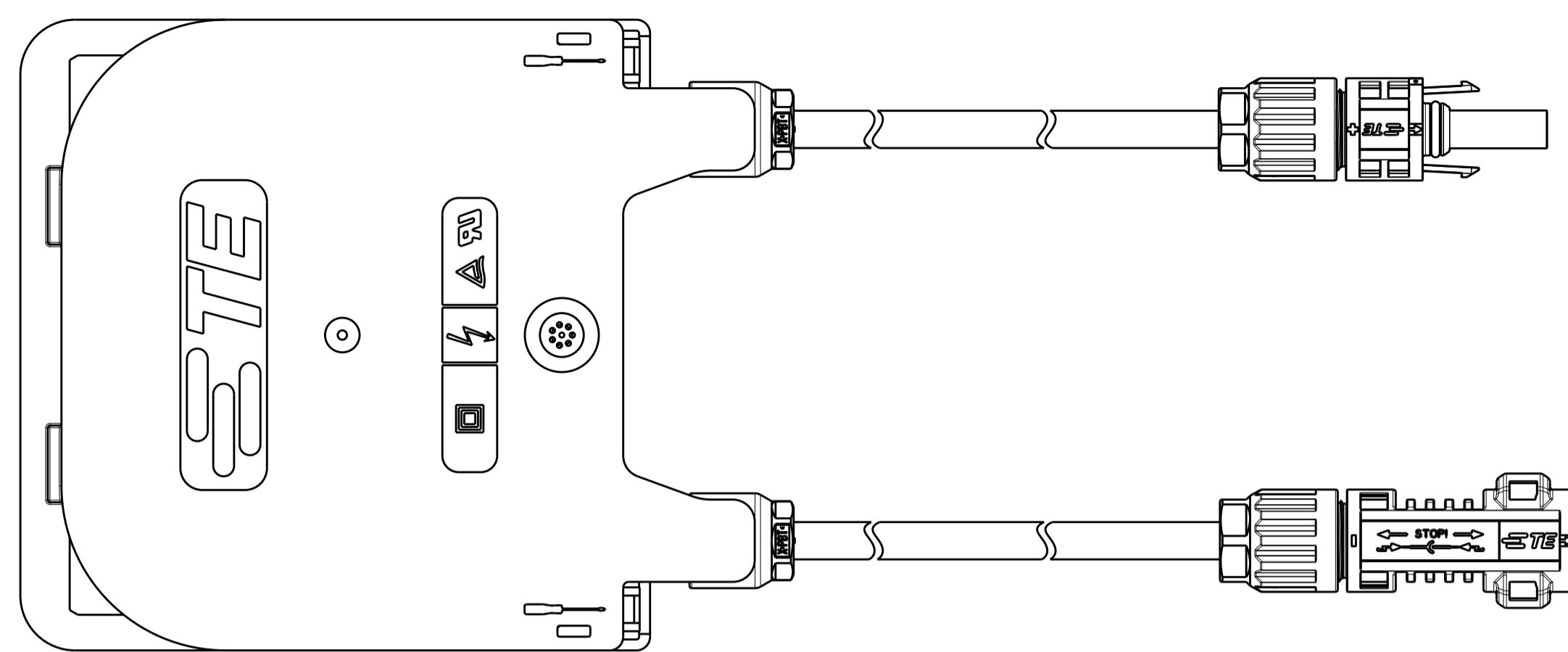


LID ASSEMBLY SHOWN CLOSED FOR REFERENCES ONLY



ASSEMBLY SHOWN WITHOUT COVER FOR REFERENCES ONLY

-1 AS SHOWN



ASSEMBLY SHOWN WITH COVER CLOSED FOR REFERENCES ONLY

1- -1 AS SHOWN

LOC	DIST	REVISIONS					
		P	LTN	DESCRIPTION	DATE	DWN	APVD
		B		UNIFIED MARKINGS ARE ADDED	27APR2016	KR	ZY
		C		REVISE THE BOX TO BE IEC62790 APPROVAL -4, -7, 1--4, 1--9, 2--1, 2--5 & 9--1 ADDED	09JUN2017	AZ	MS
		D		ECR-18-018689	28NOV2018	SR	MZ
		E		ECR-19-008128	30MAY2019	SR	MZ

NO	35 PIECES	700 mm MINUS 550 mm PLUS	YES	9-2270171-1
YES	30 PIECES	1600 mm	YES	2-2270171-5
YES	35 PIECES	1000 mm	YES	2-2270171-1
YES	35 PIECES	600 mm	YES	1-2270171-9
YES	30 PIECES	1100 mm	YES	1-2270171-4
NO	35 PIECES	950 mm	YES	2270171-7
NO	30 PIECES	1100 mm	YES	2270171-4
YES	30 PIECES	1600 mm	YES	1-2270171-5
YES	35 PIECES	1000 mm	YES	1-2270171-1
NO	35 PIECES	900 mm	YES	2270171-3
NO	35 PIECES	1000 mm	YES	2270171-1
ADHESIVE TAPE	PACKAGING QTY.	CABLE LENGTH IN mm	UNIFIED MARKING	PART NUMBER

9--1	2--5	2--1	1--9	1--4	-7	-4	1- -5	1- -1	-3	-1	PART NUMBERS			
700 MINUS 550 PLUS	1600	1000	600	1100	950	1100	1600	1000	900	1000	CABLE LENGTH "L" IN mm			
-	1	1	1	1	-	-	1	1	-	-	14	ADHESIVE TAPE, DOUBLE SIDED (60mm X 20mm X 1.0mm)	-	-
2	2	2	2	2	2	2	2	2	2	2	13	SOLAR CABLE DUAL RATED(TÜV,UL) 4mm <sup>2</sup> /12 AWG	13	BLACK
1	1	1	1	1	1	1	1	1	1	1	12	PV4-S CONNECTOR (SOCKET) PLUS CODED		BLACK
1	1	1	1	1	1	1	1	1	1	1	11	PV4-S CONNECTOR (PIN) MINUS CODED		BLACK
3	3	3	3	3	3	3	3	3	3	3	10	BYPASS DIODE TYPE: SL1515B	6 11 12	
2	2	2	2	2	2	2	2	2	2	2	9	PINCH RING SEAL INMOLDED, ASSY		BLACK PA66/LSR
2	2	2	2	2	2	2	2	2	2	2	8	CABLE SCREW JOINT		BLACK PBT
1	1	1	1	1	1	1	1	1	1	1	7	RING FOR ULTRASONIC WELDING		
1	1	1	1	1	1	1	1	1	1	1	6	MEMBRANE VENTS		
4	4	4	4	4	4	4	4	4	4	4	5	S-CLIP		PLAIN STAINLESS STEEL
4	4	4	4	4	4	4	4	4	4	4	4	CONTACT RAIL		TIN HOT DIPPED CuSn
1	1	1	1	1	1	1	1	1	1	1	3	SOLAR MODULE BOX LOWER PART, WITH STANDOFFS		BLACK PPE+PS
1	1	1	1	1	1	1	1	1	1	1	2	O-RING SEAL		RED SILOPREN
1	1	1	1	1	1	1	1	1	1	1	1	SOLAR MODULE BOX COVER, ASSY. UL WITH UNIFIED MARKING	1	BLACK PPE+PS
QTY. PER ASSY											ITEM-NO.	DESCRIPTION	SURFACE / COLOUR	MATERIAL

THIS DRAWING IS A CONTROLLED DOCUMENT.

DWN: BRAGHU 02MAR2016  
 CHK: ZHANG ALEX 02MAR2016  
 APVD: ZHONG YUAN 02MAR2016

NAME: JUNCTION BOX ASSEMBLY, Z-RAIL, S-CLIP, PV4-S CONNECTOR ASSY.

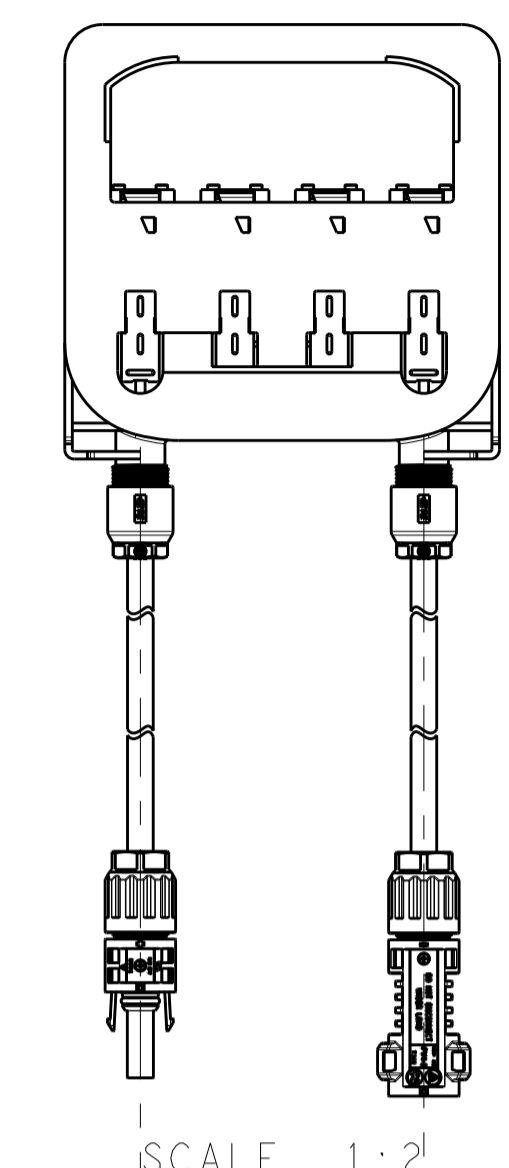
PRODUCT SPEC: 108-2471-1  
 APPLICATION SPEC: 114-13303-1

SIZE: A1 00779 C=2270171  
 SCALE: 1:1 SHEET 1 OF 2 REV E

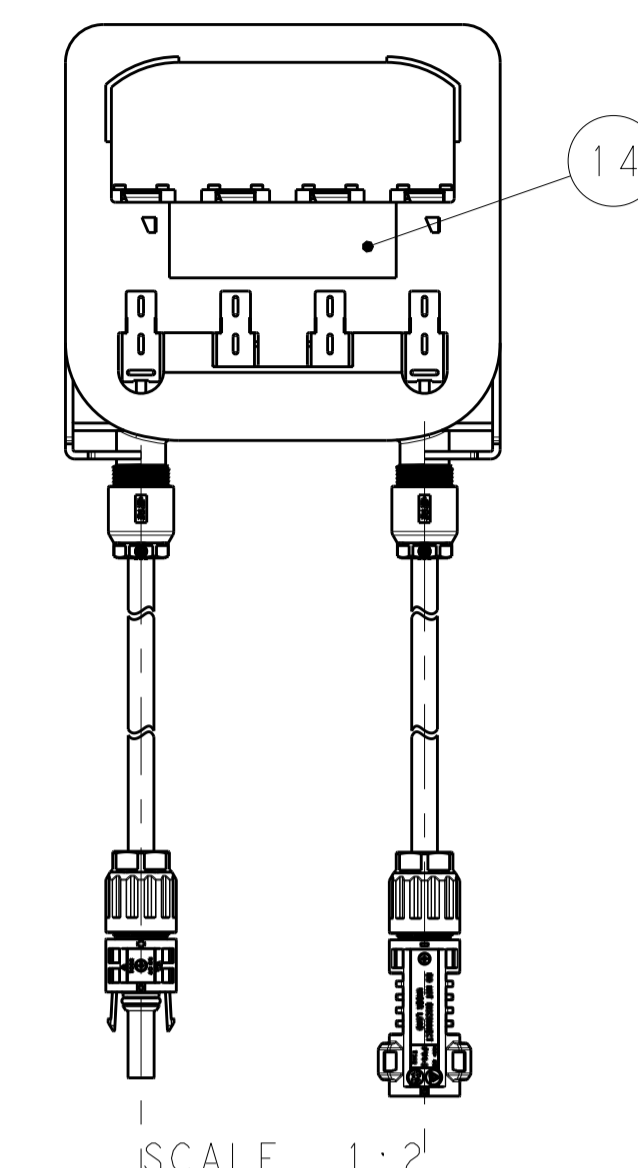
TE Connectivity

LOC		DIST		REVISIONS			
P	LTN	DESCRIPTION	DATE	DWN	APVD		
-	-	SEE SHEET 1	-	-	-		

- 1 COVER NOT ASSEMBLED WITH LOWER PART. ENCLOSE LOOSELY.
- 2 PART NUMBER.
- 3 PRODUCTION DATE (YYMMDD).
- 4 MANUFACTURING LOCATION CODE.
- 5 FOR CABLES PER APPLICATION SPEC. 114-18488-1 WITH OUTER DIAMETER 5.5 - 7.8mm
- 6 DIODE SL1515B ACC. SPEC. 108-94244.
- 7 MODEL CODE ACCORDING TE-SPEC. 404-74000-1.
- 8 CONSECUTIVE SERIAL NUMBER.
- 9 TEST EQUIPMENT NUMBER.
- 10 DIODES WELDED ON CONTACT RAIL EXCHANGABLE WITH REP-KIT. SEE APPL.SPEC. 114-13303-1.
- 11 DIODE SL1515E ACC. SPEC. 108-106133 CAN ALTERNATIVELY USED.
- 12 ONLY DIODES OF THE SAME TYPE RESP. DESIGNATION ARE PERMITTED FOR USE IN ONE AND THE SAME SOLAR BOX. ONLY SOLARLOK BOXES WITH THE SAME DIODES ARE PERMITTED TO PACK IN ONE AND THE SAME CORRUGATED SHIPPING BOX.
- 13 SOLAR CABLE WITH UL4703 AND EN50618 APPROVAL PN 2270259-1 AND PN 2270260-1 CAN ALSO BE ALTERNATIVELY USED.
- 14 MARK FOR DIODE TYPE:  
B FOR DIODE SL1515B  
E FOR DIODE SL1515E
- 15 INDICATION FOR JUNCTION BOX ASSY VOLTAGE AND CURRENT RATINGS.



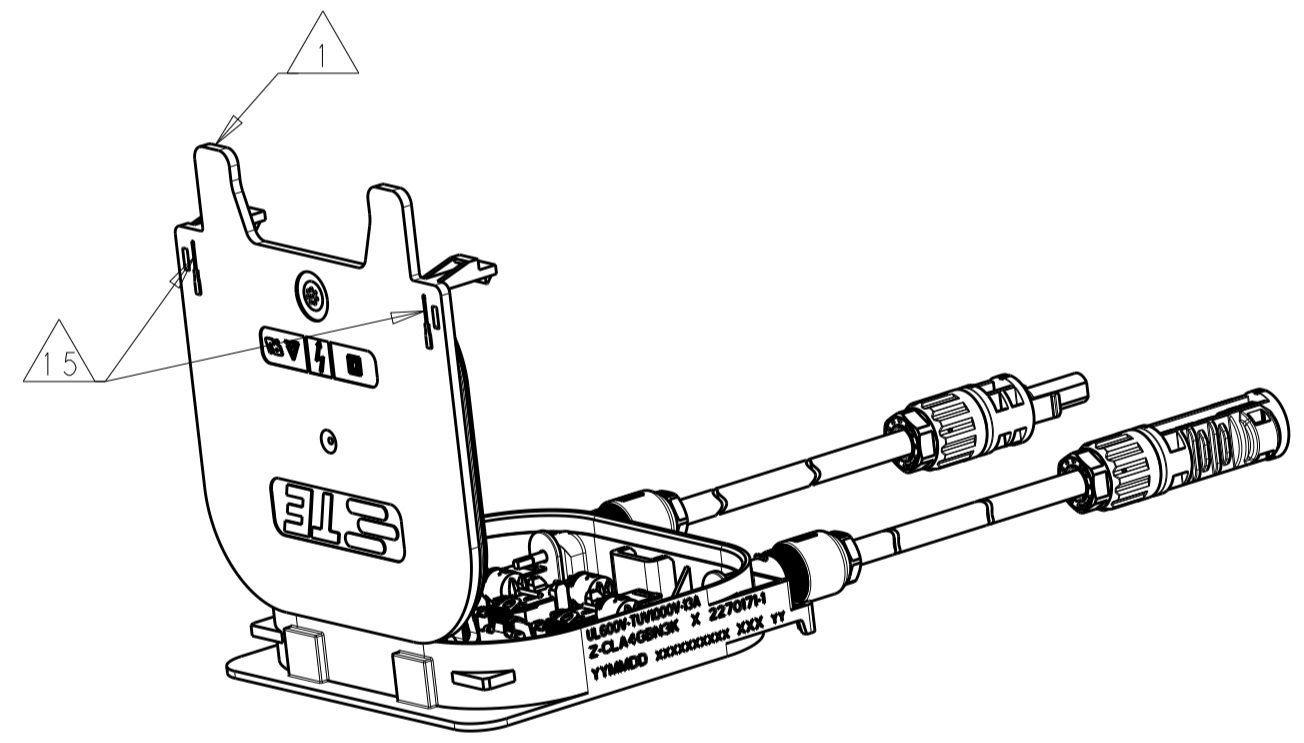
REAR VIEW OF  
 -1 & -3 AS SHOWN  
 WITHOUT MOUNTING TAPE  
 SCALE 1:2



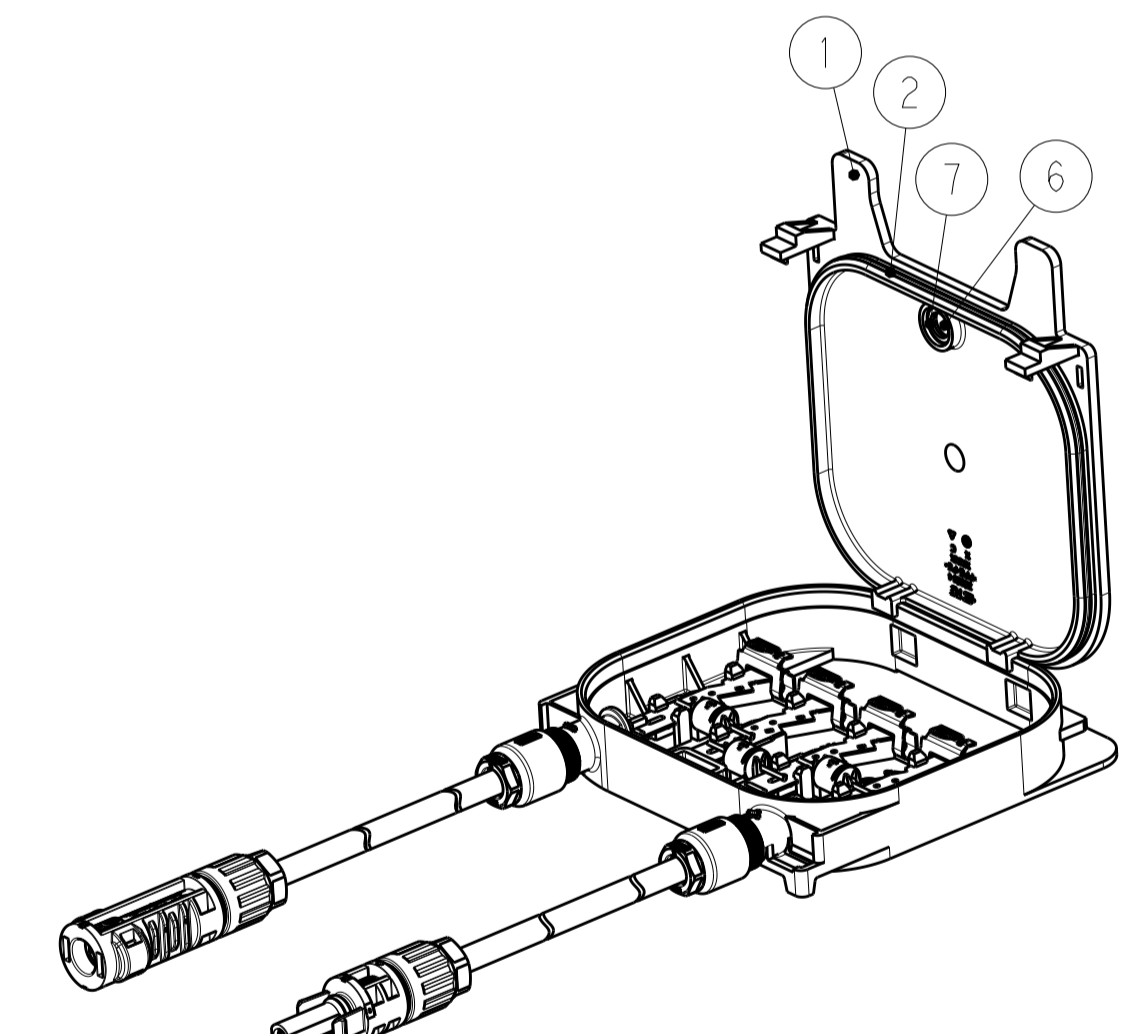
REAR VIEW OF  
 1- -1 & 1- -5 AS SHOWN  
 WITH MOUNTING TAPE  
 SCALE 1:2

MOUNTING INSTRUCTION

- FOR COVER ASSY:
1. MOUNT COVER ITEM NO. 1 AND 2 INTO THE LOWER PART ITEM NO. 3 AND CLOSE IT. ( LATCH SNAP IN ).
  2. RE-OPEN: PUT IN MARKED OPENING 15 SCREWDRIVER 3mm AND MOVE LATCH UNTIL LOCKING LATCH FREE THE COVER. OPEN COVER ITEM NO. 1 AND 2



VIEW SHOWN WITH COVER OPEN  
 SCALE 1:2



VIEW WITH ASSEMBLED COVER OPEN  
 SCALE 1:2

- 16 PACKAGING: 35 PIECES SOLAR MODULE BOX WITH CABLE ASSY'S PACKED IN TWO ROWS OF 17 AND 18 BOXES ON TOP OF CORRUGATED LAYER PAD IN CORRUGATED SHIPPING BOX PER TE-SPEC. 107-18052. SOLAR MODULE BOX WITH CABLE ASSY'S COVERED WITH CORRUGATED LAYER PAD. 35 PIECES SOLAR MODULE BOX COVER ASSY'S ITEM No.1 PACKED ON TOP OF CORRUGATED LAYER. 3x5 STACKS PACKAGED IN ESD PLASTIC BAG AND PUT ON THE CORRUGATED LAYER PAD. ON TOP USED AS COVER - PAPER CUSHION.

PACKAGING UNIT: 35 PIECES  
STANDARD PACKAGING QUANTITY: 35 PIECES.

- 17 PACKAGING: 30 PIECES JUNCTION BOX ASSEMBLY, Z-RAIL, FOIL CLIP PACKED IN TWO ROWS OF 15 BOXES EACH ON TOP OF CORRUGATED LAYER PAD . IN CORRUGATED SHIPPING BOX PER TE-SPEC. 107-18052. JUNCTION BOX ASSEMBLY, Z-RAIL, FOIL COVERED WITH CORRUGATED LAYER PAD. 30 PIECES JUNCTION BOX LID ASSEMBLY, Z-RAIL, FOIL ITEM No. 1 PACKED ON TOP OF CORRUGATED LAYER. 15 IN THE FIRST AND SECOND LEVEL PACKAGED IN ESD PLASTIC BAG AND PUT ON THE CORRUGATED LAYER PAD. ON TOP USED AS COVER - PAPER CUSHION.

PACKAGING UNIT: 30 PIECES  
STANDARD PACKAGING QUANTITY: 30 PIECES.

THIS DRAWING IS A CONTROLLED DOCUMENT.		DWN: 02MAR2016	
DIMENSIONS:		CHK: 02MAR2016	
TOLERANCES UNLESS OTHERWISE SPECIFIED:		APVD: 02MAR2016	
mm		NAME: ZHANG ALEX	
0 PLC	±2	PRODUCT SPEC	JUNCTION BOX ASSEMBLY, Z-RAIL, S-CLIP, PV4-S CONNECTOR ASSY.
1 PLC	±2.0	APPLICATION SPEC	
2 PLC	±	114-13303-1	SIZE: A1
3 PLC	±	114-13303-1	CAGE CODE: 00779
4 PLC	±	114-13303-1	DRAWING NO: 2270171
ANGLES	±	114-13303-1	RESTRICTED TO: -
MATERIAL	FINISH	WEIGHT	SCALE: 1:1
CUSTOMER DRAWING		SHEET: 2 OF 2	REV: E

## X-ON Electronics

Largest Supplier of Electrical and Electronic Components

*Click to view similar products for [Solar Connectors / Photovoltaic Connectors](#) category:*

*Click to view products by [TE Connectivity](#) manufacturer:*

Other Similar products are found below :

[1740699-7](#) [1971861-4](#) [1971131-4](#) [1971858-3](#) [1971861-3](#) [PV-090508-M10](#) [PV-CM-S 2 5-6 \(-\)](#) [2270184-3](#) [2270154-2](#) [2270226-4](#) [PV-090508-M06-N](#) [1987558-2](#) [PV-090506-F03](#) [UTXPM](#) [UTXPF](#) [UTXCMB6AM](#) [1627092](#) [1017635](#) [1017636](#) [1-2306314-1](#) [1-2306314-2](#) [1302440201](#) [1303450000](#) [PV-STICK+](#) [VPE10](#) [2-1971862-2](#) [H4CMC6DM](#) [1705996](#) [1705995](#) [1971858-2](#) [5-2306317-2](#) [1704926](#) [H4CFC4DIS](#) [H4CMC4DC](#) [H4CFC4DC](#) [H4CMC4DM](#) [H4CFC4DM](#) [H4CFC6DM](#) [H4CFM2DI](#) [H4CFM6DI](#) [H4CMC2DI](#) [H4CMC8DM](#) [H4CMM6DI](#) [H4CMC4DMS](#) [H4CMC4DIS](#) [H4PF](#) [H4PM](#) [HGLUI](#) [PWJ-03BMMB-LL8001](#) [UTXCFA0AM](#) [UTXCFA4BMH](#) [UTXCMA0AM](#)