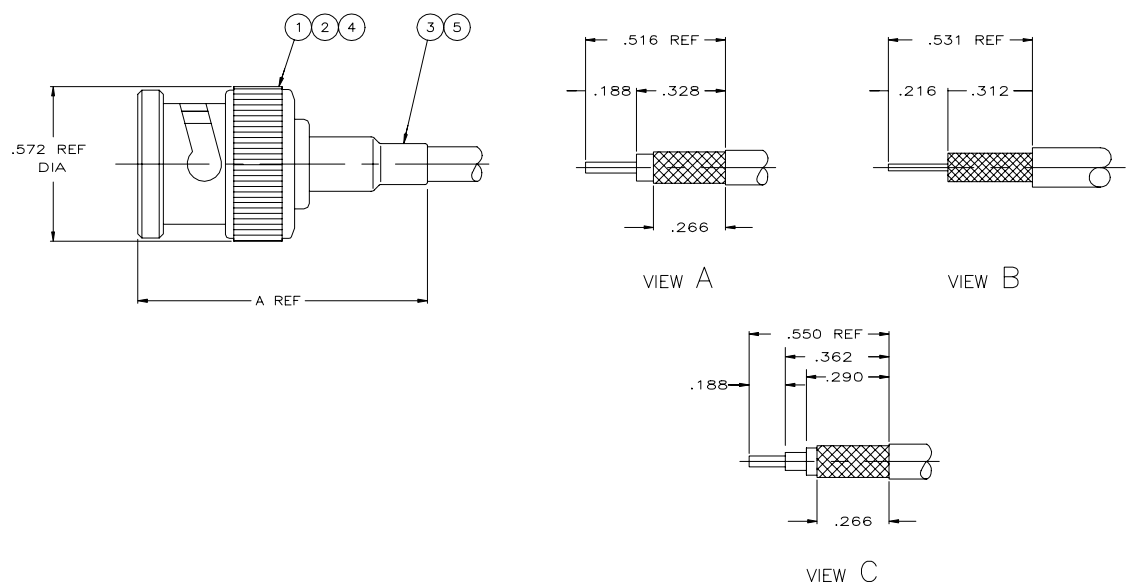


REVISIONS				
P	CHK	DESCRIPTION	DATE	BY
AVS		REVISED PER ECR-21-103273	13MAY2021	RZ



RECOMMENDED STRIP LENGTH

- △ CABLE USED WITHOUT SPACER
- △ CABLE USED WITH SPACER
- 3. SEE INSTRUCTION SHEET 408-2798
- 4. PARTS PACKAGED UNASSEMBLED
- △ USE WITH HAND TOOL FRAME 354940-1
- △ USE WITH HANDTOOL 69710-1, OR PNEUMATIC TOOL 69365 & 69365-3
- △ OBSOLETE PARTS: OBSOLETE CIS STREAMLINING PER D.RENAUD/D.SINISI

	OBSOLETE	H.P. RED TRIAXIAL	-	58330-1	69477-4	C	1.090	1-938013-3	-	-	-	9-329461-0	9-227322-0	413530-6	4-227079-0
	OBSOLETE	RG-180/U,180A/U,180B/U & 195/U	-	58330-1	69477-4	A	1.090	-	-	-	-	9-329461-0	9-221607-4	413530-5	3-227079-7
SUPERSEDED BY 8-227079-2		RG-188 DOUBLE BRAID	-	58330-1	69477-4	A	1.090	-	227194-1	-	-	9-329049-0	9-227322-0	413530-6	3-227079-3
	OBSOLETE	BELDEN 9248	-	220244-1	220247-1	A	1.090	-	-	-	-	9-50427-0	1-221607-7	413530-3	3-227079-2
	OBSOLETE	BELDEN 9248	-	220244-1	220247-1	A	1.090	-	-	-	-	9-50427-0	1-221607-8	413530-3	3-227079-1
	OBSOLETE	BELDEN 9248 & 9114	-	220244-1	220247-1	A	1.090	-	-	-	-	9-50427-0	1-221607-6	413530-3	3-227079-0
		RG-179/U & 187/U	220217-3	220210-1	220009-5	A	1.090	-	227194-1	-	-	9-328666-0	227322-4	227074-2	2-227079-2
SUPERSEDED BY 2-227079-2		RG-179/U & 187/U	220217-3	220210-1	220009-5	A	1.090	-	227194-1	-	-	9-328666-0	227322-3	413530-6	2-227079-1
SUPERSEDED BY 2-5227079-0		RG-179/U & 187/U	220217-3	220210-1	220009-5	A	1.090	-	227194-1	-	-	9-328666-0	9-227322-1	413530-6	2-227079-0
		BELDEN 8218,AMPHENOL 21-597 & BELDEN NH SPECIAL	-	58330-1	69477-4	A	1.090	-	-	-	-	9-329461-0	2-221607-2	413530-5	1-227079-9
SUPERSEDED BY 1-227079-9		BELDEN 8218,AMPHENOL 21-597 & BELDEN NH SPECIAL	-	58330-1	69477-4	A	1.090	-	-	-	-	9-329461-0	2-221607-1	413530-5	1-227079-8
	OBSOLETE	BELDEN 8218,AMPHENOL 21-597 & BELDEN NH SPECIAL	-	58330-1	69477-4	A	1.090	-	-	-	-	9-329461-0	9-221607-3	413530-5	1-227079-7
SUPERSEDED BY 1-5227079-6		RG-174/U & 188/U	220217-3	220210-1	220009-5	A	1.090	-	227194-1	-	-	9-328666-0	227322-8	227074-2	1-227079-6
SUPERSEDED BY 1-227079-6		RG-174/U & 188/U	220217-3	220210-1	220009-5	A	1.090	-	227194-1	-	-	9-328666-0	227322-7	413530-6	1-227079-5
	OBSOLETE	RG-174/U & 188/U	220217-3	220210-1	220009-5	A	1.090	-	227194-1	-	-	9-328666-0	9-227322-0	413530-6	1-227079-4
	OBSOLETE	BELDEN 9266	-	220189-5	-	A	1.090	-	-	-	-	9-50428-0	221607-5	413530-2	1-227079-3
	OBSOLETE	RG-71/U & 71A/U	220217-2	220189-2	220187-2	B	1.090	-	-	227423-1	-	1-329460-1	221607-8	413530-2	1-227079-2
		RG-59/U,59A/U & 59B/U	220217-2	220189-2	220187-2	A	1.090	-	-	-	-	9-50428-0	221607-8	413530-2	1-227079-1
		RG-62/U,62A/U & 62B/U	220217-2	220189-2	220187-2	B	1.090	-	-	227423-1	-	9-50428-0	221607-8	413530-2	1-227079-1
SUPERSEDED BY 227079-6		RG-55/U,55A/U,55B/U, & 223/U	220217-1	220189-1	220187-1	A	1.280	-	-	-	-	9-225382-0	221607-7	227074-1	1-227079-0
		RG-58/U,58A/U,58B/U,58C/U & 141/U	220217-1	220189-1	220187-1	A	1.090	-	-	-	-	9-50427-1	221607-7	227074-1	227079-9
		RG-59/U,59A/U & 59B/U	220217-2	220189-2	220187-2	A	1.090	-	-	-	-	9-50428-0	221607-6	227080-1	227079-7
		RG-62/U,62A/U & 62B/U	220217-2	220189-2	220187-2	B	1.090	-	-	227423-1	-	9-50428-0	221607-6	227080-1	227079-7
		RG-55/U,55A/U,55B/U, & 223/U	220217-1	220189-1	220187-1	A	1.280	-	-	-	-	9-225382-0	221607-5	227074-1	227079-6
		RG-58/U,58A/U,58B/U,58C/U & 141/U	220217-1	220189-1	220187-1	A	1.090	-	-	-	-	9-50427-1	221607-5	227074-1	227079-5
	OBSOLETE	RG-71/U & 71A/U	220217-2	220189-2	220187-2	B	1.090	-	-	227423-1	-	1-329460-1	9-221607-1	413530-2	227079-4
	OBSOLETE	RG-59/U,59A/U & 59B/U	220217-2	220189-2	220187-2	A	1.090	-	-	227423-1	-	9-50428-0	9-221607-1	413530-2	227079-3
	OBSOLETE	RG-62/U,62A/U & 62B/U	220217-2	220189-2	220187-2	B	1.090	-	-	227423-1	-	9-50428-0	9-221607-1	413530-2	227079-3
SUPERSEDED BY 227079-6		RG-55/U,55A/U,55B/U, & 223/U	220217-1	220189-1	220187-1	A	1.280	-	-	-	-	9-225382-0	9-221607-0	227074-1	227079-2
	OBSOLETE	RG-58/U,58A/U,58B/U,58C/U & 141/U	220217-1	220189-1	220187-1	A	1.090	-	-	-	-	9-50427-1	9-221607-0	227074-1	227079-1

CABLE SIZE DIE SET △ DIE SET △ CRIMP TOOL VIEW A ⑥ TUBING HEAT SHRINK QTY=1 ⑤ TUBING QTY=1 ④ SPACER QTY=1 ③ FERRULE QTY=1 ② CONTACT QTY=1 ① PLUG ASSY QTY=1 PART NUMBER

THIS DRAWING IS A CONTROLLED DOCUMENT

DRW: LAMAN	10-9-99
CHK: E. RUTH	10/27/99
APPD: J. GIBBS	11/06/99
NAME: J. GIBBS	
PRODUCT SPEC: 108-12044	
APPLICATION SPEC: -	
WEIGHT: 0.000000	
CUSTOMER DRAWING	

TE Connectivity
PLUG COMMERCIAL BNC
SCALE 1:1 SHEET 1 OF 2 REV AVS

REVISIONS			
P	LR	DESCRIPTION	DATE
-	-	SEE SHEET 1	-

△ OBSOLETE	BELDEN 9907	220217-1	220189-1	220187-1	A	1.090	-	-	-	9-50427-1	1-221607-6	227074-1	9-227079-4
△ OBSOLETE	HI-TEMPRG62A/U,TIMESPL62,BERK-TEKBTDC62&BELDEN89269	220217-2	220189-2	220187-2	B	1.312	-	-	227423-1	9-228784-0	221607-6	413530-2	9-227079-3
OBSOLETE	BELDEN 88241, BERK-TEK BTDC 59	-	58330-1	69477-4	B	-	-	-	-	-	-	-	-
OBSOLETE	BELDEN 8218,AMPHENOL 21-597 AND BELDEN NH SPECIAL	-	58330-1	69477-4	A	1.090	-	-	-	9-329461-0	2-221607-2	413530-5	9-227079-2
OBSOLETE	BELDEN YR40862	220217-1	220189-1	220187-1	A	1.090	-	-	-	9-50427-1	2-221607-8	227074-1	9-227079-1
OBSOLETE	C&M 17189	220217-3	220210-1	220009-5	A	1.090	-	414932-2	-	9-328666-0	227322-8	227074-2	9-227079-0
OBSOLETE	BELDEN 9907 AND RG-141A/U	220217-1	220189-1	220187-1	A	1.090	-	-	-	9-50427-1	1-221607-6	227074-1	8-227079-9
OBSOLETE	CUSTOM CABLE:C/G=φ.014,DIELECTRIC=φ.062,JACKET=φ.103	-	220210-1	-	A	1.090	-	227194-1	-	9-328666-0	1-227322-4	413530-6	8-227079-8
OBSOLETE	BELDEN 9266	-	220189-5	-	A	1.090	-	-	-	9-50428-0	221607-5	413530-2	8-227079-7
OBSOLETE	BELDEN 89907	-	318452-2	-	A	1.312	-	-	-	9-228783-0	1-221607-6	227074-1	8-227079-6
OBSOLETE	RG-59/U,59A/U & 59B/U	-	-	-	A	1.090	-	-	-	-	-	-	-
OBSOLETE	RG-62/U,62A/U & 62B/U	220217-2	220189-2	220187-2	B	1.090	-	-	227423-1	9-50428-0	9-221607-1	413530-2	8-227079-5
OBSOLETE	RG-58/U,58A/U,58B/U,58C/U & 141/U	220217-1	220189-1	220187-1	A	1.090	-	-	-	9-50427-1	221607-5	227074-1	8-227079-4
OBSOLETE	BELDEN 9555	-	220189-2	220187-2	A	1.090	-	-	-	9-50428-0	221607-6	413530-2	8-227079-3
△	RG-188 DOUBLE BRAID AND RG-316 DOUBLE BRAID	-	58330-1	69477-4	A	-	-	227194-1	-	9-329049-0	227322-8	413530-6	8-227079-2
△	RG-59/U,59A/U & 59B/U	-	-	-	A	1.090	-	-	-	-	-	-	-
△	RG-62/U,62A/U & 62B/U	220217-2	220189-2	220187-2	B	1.090	-	-	227423-1	9-50428-0	221607-6	413530-2	8-227079-1
△	RG-58/U,58A/U,58B/U,58C/U & 141/U	220217-1	220189-1	220187-1	A	1.090	-	-	-	9-50427-1	221607-5	227074-1	8-227079-0
OBSOLETE	GORE CXN1426A	-	58330-2	-	A	1.090	-	-	-	9-329049-0	1-221607-6	413530-5	7-227079-9
OBSOLETE	SPECIAL CUSTOMER CABLE-110 OHM LOW NOISE	-	58086-1	-	A	1.090	-	-	-	9-50427-0	2-221607-6	413530-3	7-227079-7
OBSOLETE	BELDEN 88241,TIMES PL62, BERK-TEK BTDC59 AND BTDC62	220217-2	220189-2	220187-2	A	1.312	-	-	227423-1	9-228784-0	221607-8	413530-2	7-227079-6
OBSOLETE	BELDEN 88240 AND BERK-TEK BTDC 58	220217-1	220189-1	220187-1	A	1.312	-	-	-	9-228783-0	221607-5	227074-1	7-227079-5
OBSOLETE	RG-62/U,62A/U & 62B/U	220217-2	220189-2	220187-2	B	1.090	-	-	227423-1	9-50428-0	9-221607-1	413530-2	7-227079-4
OBSOLETE	RG-59/U,59A/U & 59B/U	220217-1	220189-1	220187-1	A	1.090	-	-	-	9-50427-1	9-221607-0	227074-1	7-227079-3
OBSOLETE	RG-58/U,58A/U,58B/U,58C/U & 141/U	220217-1	220189-1	220187-1	A	1.090	-	-	-	9-50427-1	9-221607-0	227074-1	7-227079-3
△	RG-62/U,62A/U & 62B/U	220217-2	220189-2	220187-2	B	1.090	-	-	227423-1	9-50428-0	221607-8	413530-2	7-227079-2
△	RG-59/U,59A/U & 59B/U	220217-1	220189-1	220187-1	A	1.090	-	-	-	-	-	-	-
OBSOLETE	RG-58/U,58A/U,58B/U,58C/U & 141/U	220217-1	220189-1	220187-1	A	1.090	-	-	-	9-50427-1	221607-7	227074-1	7-227079-1
OBSOLETE	BELDEN 9275	-	220189-5	-	A	1.090	-	-	-	9-50428-1	9-221607-0	413530-2	7-227079-0
OBSOLETE	C & M COAXIAL Q-81-13059	-	58330-1	69477-4	A	1.090	-	227194-1	-	9-329461-0	227322-8	413530-6	6-227079-9
SUPERSEDED BY 6-5227079-8	BELDEN 89907	-	318452-2	-	A	1.312	-	-	-	9-228783-0	1-221607-6	227074-1	6-227079-8
SUPERSEDED BY 6-5227079-5	BELDEN 9907 AND RG-141A/U	220217-1	220189-1	220187-1	A	1.090	-	-	-	9-50427-1	1-221607-6	227074-1	6-227079-7
OBSOLETE	BELDEN 9290	-	-	220043-1	A	1.490	-	-	-	9-51713-3	1-221607-6	413530-3	6-227079-5
OBSOLETE	BELDEN 9907	220217-1	220189-1	220187-1	A	1.090	-	-	-	9-50427-1	1-221607-6	227074-1	6-227079-4
OBSOLETE	RG-180/U, 180A/U, 180B/U, 195/U	-	58330-1	69477-4	A	1.090	-	-	-	9-329461-0	2-221607-4	413530-5	6-227079-3
OBSOLETE	RG-141/U, 142A/U, AND 142B/U	220217-1	220189-1	220187-1	A	1.280	-	-	-	9-225382-0	1-221607-7	227074-1	6-227079-2
SUPERSEDED BY 6-5227079-1	RG-141/U, 142A/U, AND 142B/U	220217-1	220189-1	220187-1	A	1.280	-	-	-	9-225382-0	1-221607-6	227074-1	6-227079-1
OBSOLETE	RG-141/U, 142A/U, AND 142B/U	220217-1	220189-1	220187-1	A	1.280	-	-	-	9-225382-0	1-221607-8	227074-1	6-227079-0
OBSOLETE	RG-174/U (SPECIAL APPLICATION)	-	-	-	A	1.090	-	227194-1	-	9-50427-1	227322-8	413530-6	5-227079-9
OBSOLETE	BELDEN 8281	-	-	220043-1	A	1.250	-	-	-	9-50427-2	221607-5	413530-3	5-227079-8
SUPERSEDED BY 1-227079-1	RG-59/U,59A/U & 59B/U	220217-2	220189-2	220187-2	A	1.090	-	-	-	9-50428-0	221607-8	413530-2	5-227079-7
OBSOLETE	C & M COAXIAL 6P267B33TC20PC055520	-	-	-	A	1.090	-	227194-1	-	9-329049-1	9-227322-0	413530-6	5-227079-6
OBSOLETE	RG174/U AND 188/U TYPE (SPECIAL)	-	58330-1	69477-4	-	-	-	227194-1	-	-	227322-8	413530-6	5-227079-5
OBSOLETE	BELDEN 8281	220088-1	220189-6	220043-1	A	1.250	-	-	-	9-50427-2	221607-7	413530-3	5-227079-4
SUPERSEDED	HI-TEMP RG-59/U, TIMES PL59 AND PLF59	-	220189-5	-	A	1.312	-	-	-	9-228784-0	221607-5	413530-2	5-227079-3
OBSOLETE	HI-TEMP RG-59/U, TIMES PL59 AND PLF59	-	220189-5	-	A	1.312	-	-	-	9-228784-0	221607-7	413530-2	5-227079-2
OBSOLETE	HI-TEMP RG-59/U, TIMES PL59 AND PLF59	-	220189-5	-	A	1.312	-	-	-	9-228784-0	9-221607-0	413530-2	5-227079-1
OBSOLETE	TIMES MI-2040 DBL BRAIDED RG-59/U	-	-	59894-1	A	1.187	-	-	-	9-50427-0	1-221607-4	413530-2	5-227079-0
△	HI-TEMPRG-62A/U,TIMESPL62,BERK-TEKBTDC62&BELDEN89269	220217-2	220189-2	220187-2	B	-	-	227423-1	-	9-228784-0	221607-6	413530-2	4-227079-9
OBSOLETE	BELDEN 88241, BERK-TEK BTDC 59	-	-	-	A	1.312	-	-	-	-	-	-	-
△	HI-TEMP RG-62/U,TIMES PL62, BERK-TEK BTDC 62	220217-2	220189-2	220187-2	B	-	-	227423-1	-	9-228784-0	221607-8	413530-2	4-227079-8
△	BELDEN 88241, BERK-TEK BTDC 59	-	-	-	A	1.312	-	-	-	-	-	-	-
△	HI-TEMP RG-62/U,TIMES PL62, BERK-TEK BTDC 62	220217-2	220189-2	220187-2	B	-	-	227423-1	-	9-228784-0	9-221607-1	413530-2	4-227079-7
△	BELDEN 88241, BERK-TEK BTDC 59	-	-	-	A	1.312	-	-	-	-	-	-	-
△	BELDEN 88240 AND BERK-TEK BTDC 58	220217-1	220189-1	220187-1	A	1.312	-	-	-	9-228783-0	221607-5	227074-1	4-227079-3
OBSOLETE	BELDEN 88240 AND BERK-TEK BTDC 58	220217-1	220189-1	220187-1	A	1.312	-	-	-	9-228783-0	221607-7	227074-1	4-227079-2
SUPERSEDED BY 4-227079-3	BELDEN 88240 AND BERK-TEK BTDC 58	220217-1	220189-1	220187-1	A	1.312	-	-	-	9-228783-0	9-221607-0	227074-1	4-227079-1

	CABLE SIZE	DIE SET △	DIE SET △	CRIMP TOOL	VIEW	A	⑥ TUBING HEAT SHRINK QTY=1	⑤ TUBING QTY=1	④ SPACER QTY=1	③ FERRULE QTY=1	② CONTACT QTY=1	① PLUG ASSY QTY=1	PART NUMBER
--	------------	-----------	-----------	------------	------	---	----------------------------	----------------	----------------	-----------------	-----------------	-------------------	-------------

THIS DRAWING IS A CONTROLLED DOCUMENT		DRN: LAMAN 10/27/99	TE Connectivity
DRAWN BY: E. RUTH		DATE: 11/06/99	
DIMENSIONS: INCHES		PRODUCT SPEC: 108-12044	PLUG COMMERCIAL BNC
MATERIAL: -		WEIGHT: 0.000000	RESTRICTED TO: -
FINISH: -		CUSTOMER DRAWING	SCALE: 1:1 SHEET 2 OF 2 REV: AV5

X-ON Electronics

Largest Supplier of Electrical and Electronic Components

Click to view similar products for [RF Connectors / Coaxial Connectors](#) category:

Click to view products by [TE Connectivity](#) manufacturer:

Other Similar products are found below :

[8915-1511-000](#) [89674-0827](#) [6001-7071-019](#) [6002-7051-003](#) [6002-7551-202](#) [6059674-1](#) [619550-1](#) [630059-000](#) [M39030/3-01N](#) [6500-7071-046](#) [6769](#) [CX050L2AQ](#) [7002-1541-010](#) [7002-1542-011](#) [7004-1512-000](#) [7009-1511-004](#) [7010-1511-000](#) [7029-1511-060](#) [7101-1541-010](#) [7101-1571-002](#) [7105-1521-002](#) [7145-1521-002](#) [7203-1571-003](#) [7209-1511-011](#) [7210-1511-015](#) [7210-1511-019](#) [73137-5015](#) [73216-2241](#) [73404-2300](#) [7405-1521-005](#) [7405-1521-802](#) [8527](#) [8547](#) [FS11V](#) [877931](#) [9049-9513-000](#) [9074-9513-000](#) [9101-9573-002](#) [910A205F](#) [9130-9573-002](#) [PL11SC-026](#) [PL375-33](#) [PL40-5](#) [PL74C-221](#) [PL75MC-217](#) [PL803-7](#) [1200690078](#) [1-201144-1](#) [R107003010W](#) [R110A172100](#)