

THIS DRAWING IS UNPUBLISHED.

RELEASED FOR PUBLICATION

ALL RIGHTS RESERVED.

LOC

DIST

REVISIONS

H

—

P

LTR

DESCRIPTION

DATE

DWN

APVD

A

A

INITIAL RELEASE

26NOV2013

GSK

BvH

A1

A1

ECR-14-011671

20AUG2014

GSK

BvH

NOTES:

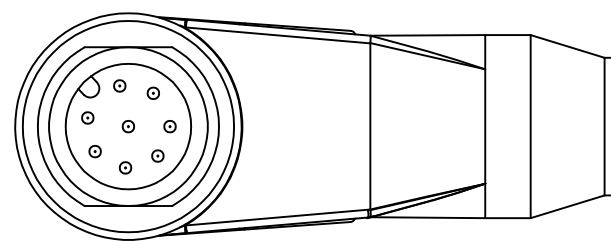
Tolerances cable lengths:

0m to 0.5m +30mm

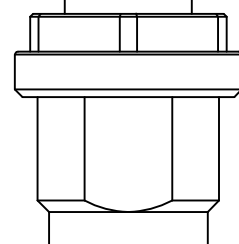
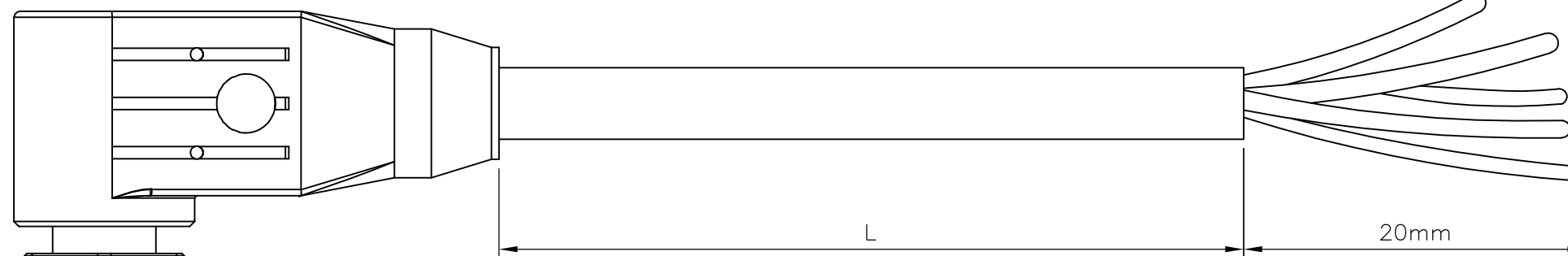
0.5m to 1.0m +50mm

1.0m to 3.0m +100mm

< 3.0m +1.5%



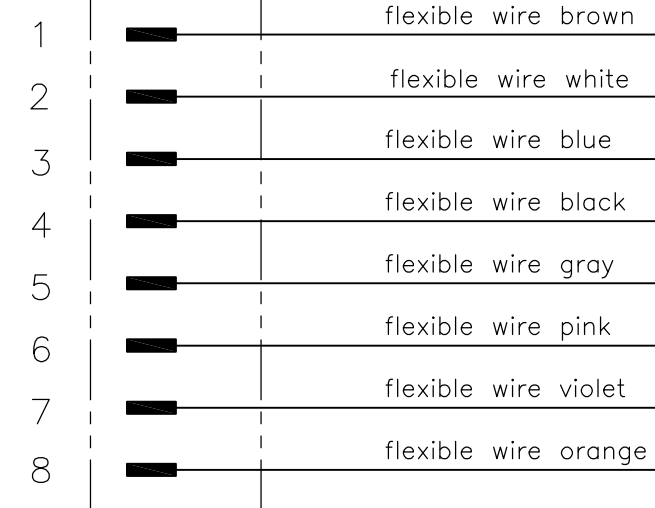
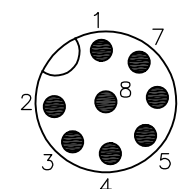
VIEW 'A'



A

Schematic diagram

Contact Layout Male



TECHNICAL DATA

Operating voltage	max. 30 V AC/DC
Operating current per contact	max. 2 A
Locking of ports	Screw thread M12 x 1 mm (recommended torque 0.6 Nm) self-securing
Protection	IP65 and IP67 when plugged and screwed down (EN 60529)

PUR CABLE

No./diameter of wires	8 x 0.25 mm ²
Wire isolation	PP (br, wh, bl, bk, gr, pk, vi, or)
C-track properties	2 million
Jacket	PUR (UL/CSA)
Outer diameter	approx. 6.0 mm
Bend radius (moving)	10 x outer diameter
Temperature range (fixed)	-40...+80 °C
Temperature range (mobile)	-20...+80 °C

8 pos	10mtr	PUR	Grey	2273094-4	8x24AWG PUR 10.0m	4
	5mtr			2273094-3	8x24AWG PUR 5.0m	3
	3mtr			2273094-2	8x24AWG PUR 3.0m	2
	1.5mtr			2273094-1	8x24AWG PUR 1.5m	1
	LENGTH "L"	MATERIAL	JACKET COLOR	TE PN	DESCRIPTION	ITEM

THIS DRAWING IS A CONTROLLED DOCUMENT.

DWN 26NOV2013

SATHISH KUMAR .G

CHK 26NOV2013

B.VELDHOVEN

APVD 26NOV2013

A.VAN ZANDVOORT

NAME

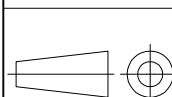


M12 X 1.0 ANGLED PLUG PIGT A

DIMENSIONS:

mm

TOLERANCES UNLESS OTHERWISE SPECIFIED:



0 PLC	± -
1 PLC	± -
2 PLC	± -
3 PLC	± -
4 PLC	± -
ANGLES	± -
MATERIAL	FINISH
-	-

PRODUCT SPEC

108-19483

APPLICATION SPEC

114-32127

WEIGHT

-

SIZE

CAGE CODE

DRAWING NO

RESTRICTED TO

A3

00779

C-2273094

-

CUSTOMER DRAWING

SCALE NTS

SHEET

1 OF 1

REV A1

X-ON Electronics

Largest Supplier of Electrical and Electronic Components

Click to view similar products for [Sensor Cables / Actuator Cables](#) category:

Click to view products by [TE Connectivity](#) manufacturer:

Other Similar products are found below :

[60963](#) [60964](#) [703000D02F2002](#) [703001D02F0602](#) [703001D02F300](#) [704000D02F120](#) [773032K02F030](#) [802027107404-1](#) [802027213811-1](#)
[804001A09M150](#) [805001A09M0502](#) [84914-0235](#) [84914-0237](#) [885030A09M020](#) [1200651332](#) [1200651713](#) [1200660844](#) [1200660845](#)
[1200661173](#) [1200680071](#) [1200720053](#) [1200720081](#) [1200720099](#) [1200720217](#) [1200800231](#) [1200860125](#) [1200870123](#) [1200980102](#)
[1200650267](#) [1200650298](#) [1200660183](#) [1200660782](#) [1200660849](#) [1200661295](#) [1200661297](#) [1200661342](#) [1200661343](#) [1200670080](#)
[1200670220](#) [1200680331](#) [1200720252](#) [1200730184](#) [1200860344](#) [1200870359](#) [1200870643](#) [1200980008](#) [1200980031](#) [1210502211](#)
[1210400542](#) [1211810021](#)