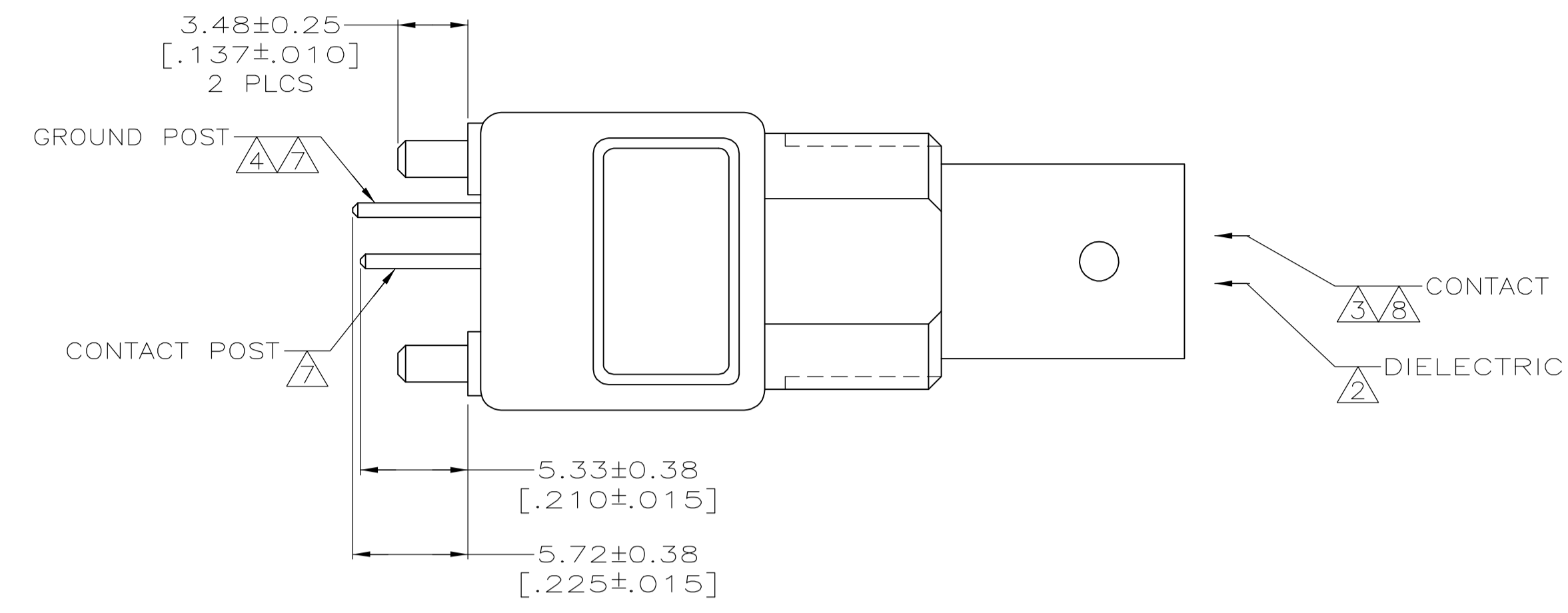
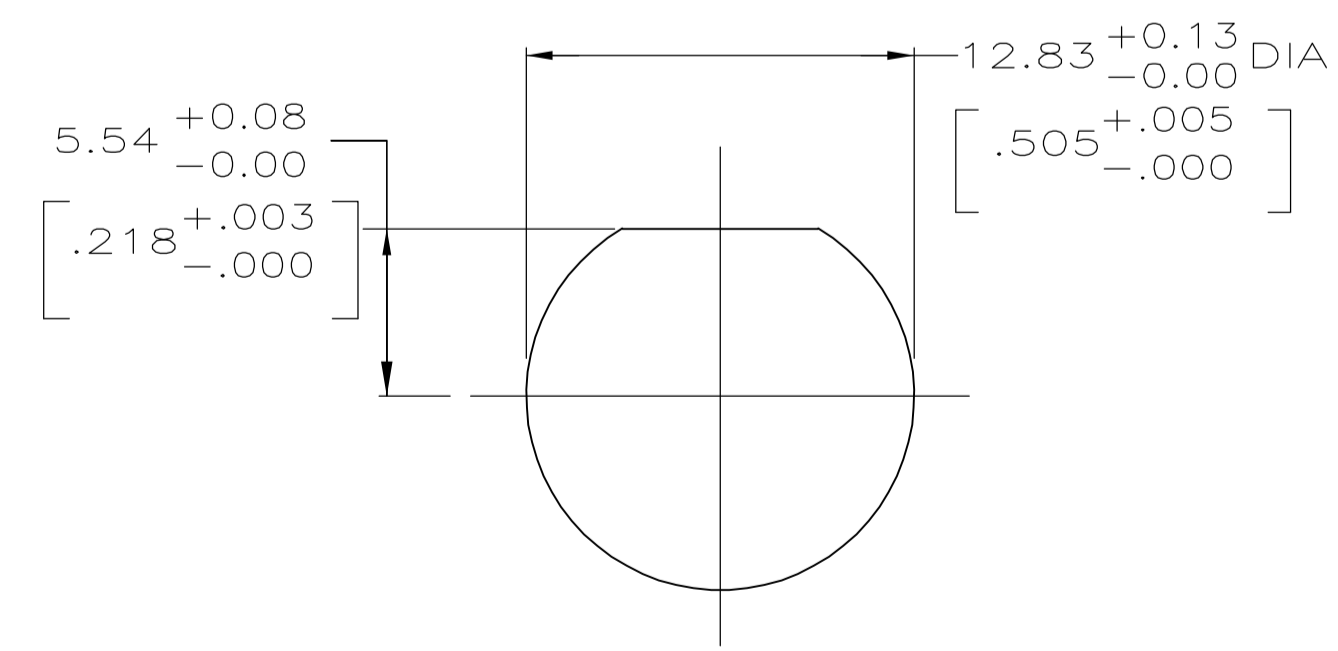
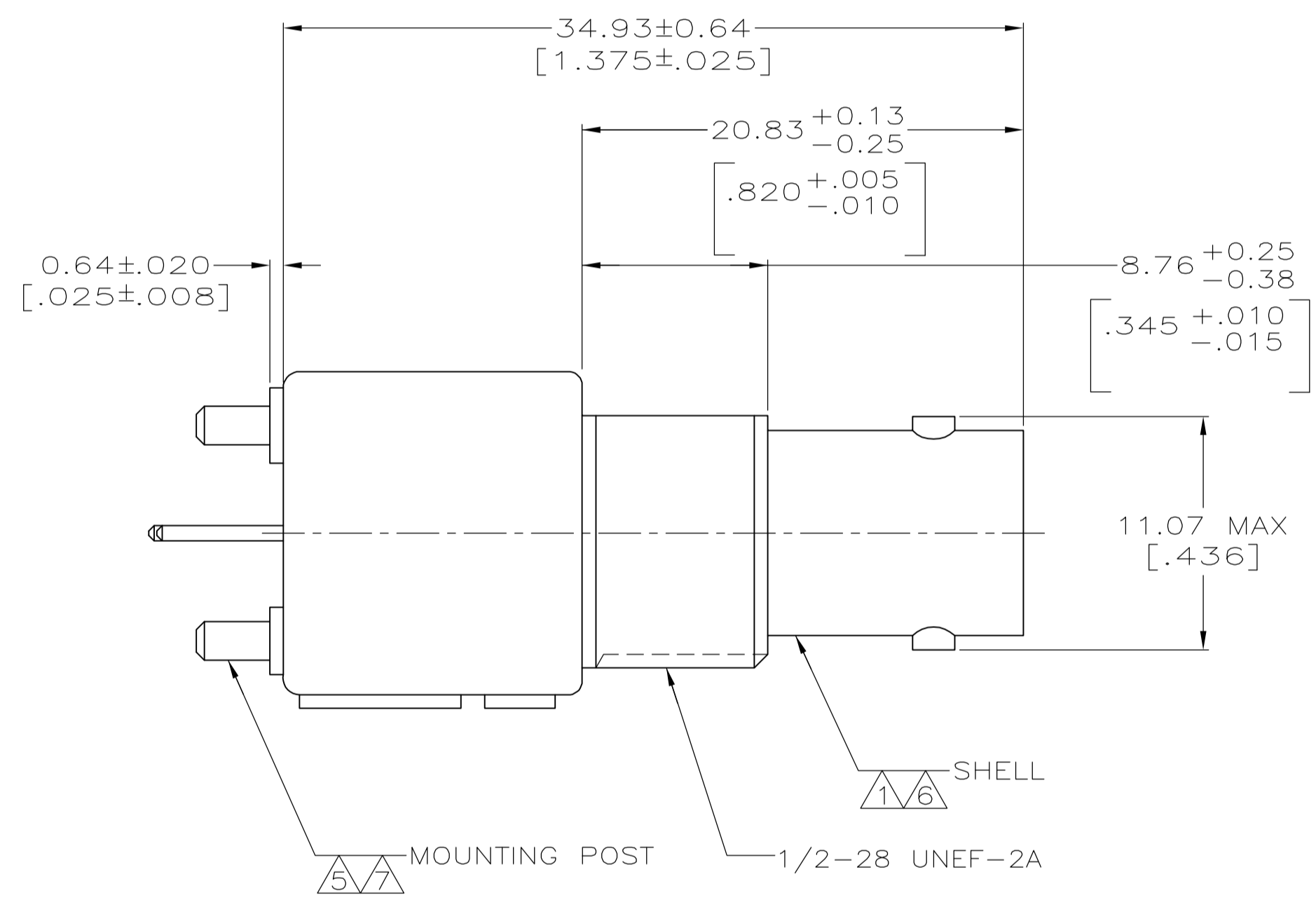
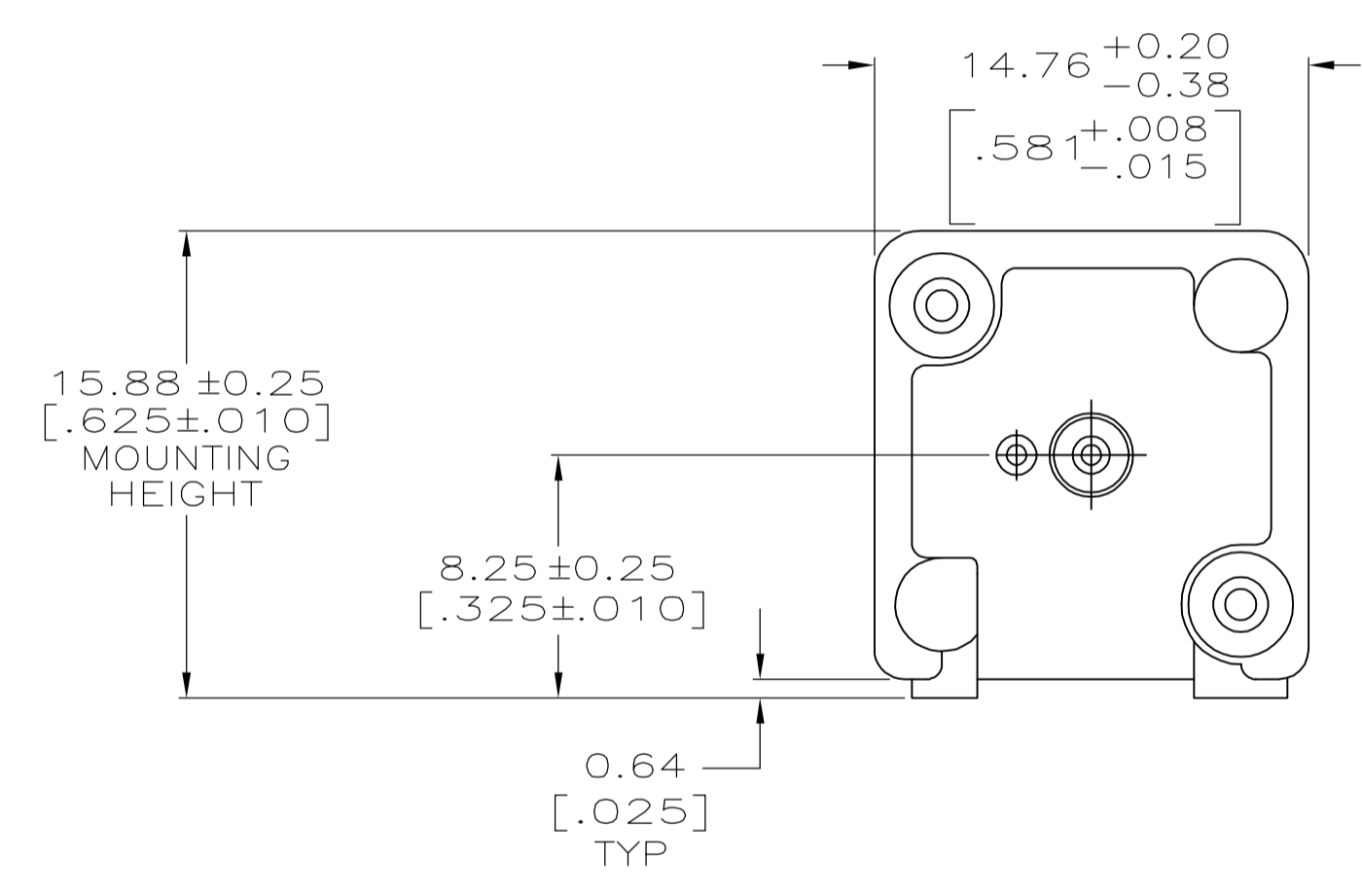


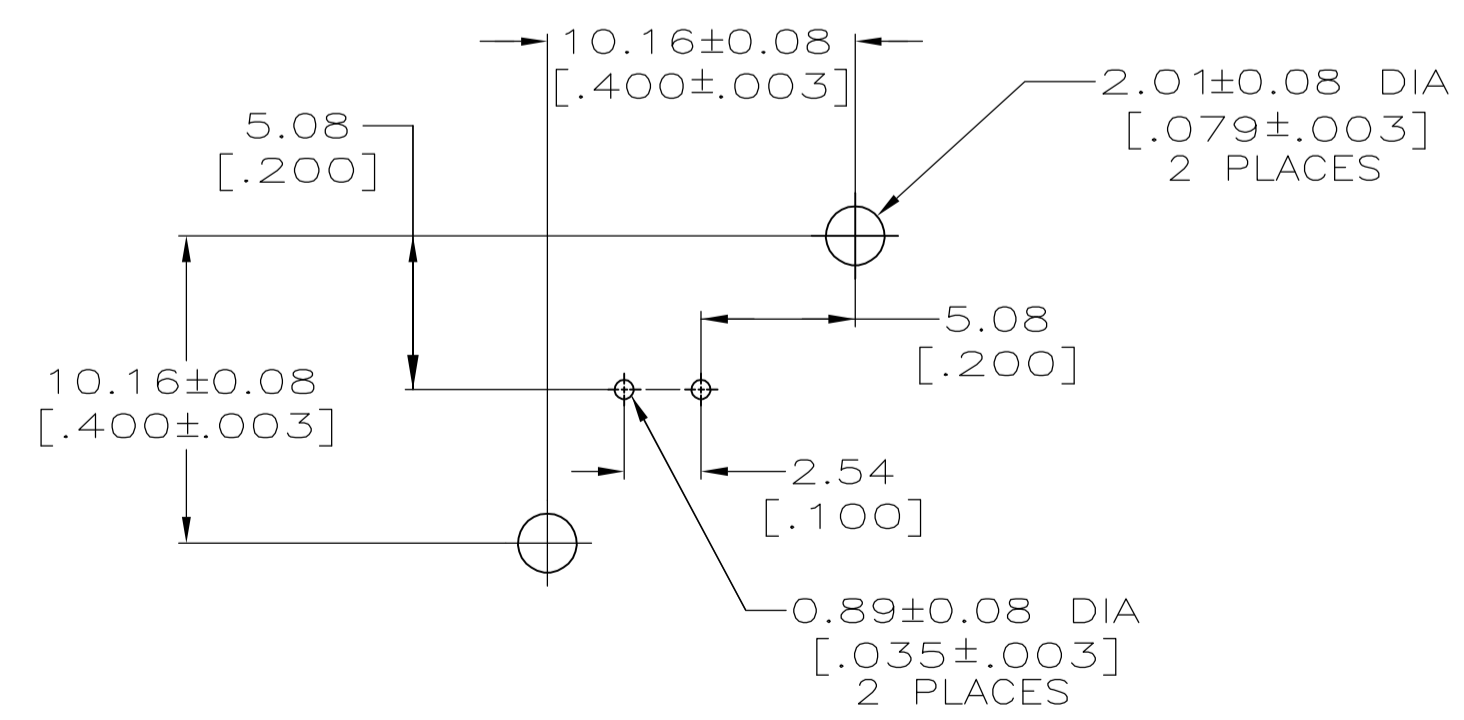
LOC		DIST		REVISIONS			
P	LTR	DESCRIPTION	DATE	BY	APVD		
D		PER EC 0514-0184-04	10JAN05	BM	JL		



- 1 ZINC PER QQ-Z-363.
- 2 POLYMETHYLPENTENE PER ASTM-D-1238.
- 3 PHOSPHOR BRONZE PER QQ-B-750.
- 4 BRASS PER ASTM-B-453.
- 5 BRASS PER ASTM-B-16.
- 6 NICKEL PLATE PER QQ-N-290, 3.81 μm [.000150] MINIMUM THICK.
- 7 TIN PLATE PER ASTM-B-545, 3.81 μm [.000150] MINIMUM THICK.
- 8 GOLD PLATE PER MIL-G-45204, 0.76 μm [.000030] MINIMUM THICK.
- 9. SEE INSTRUCTION SHEET 2769.



RECOMMENDED PANEL CUTOUT



PCB CONFIGURATION

227673-1
 PART NUMBER

THIS DRAWING IS A CONTROLLED DOCUMENT.		DIN J. LIPPERT 6-30-92		Tyco Electronics Corporation	
DIMENSIONS: INCHES		CIK A. GABANY 7-2-92		Harrisburg, PA 17105-3608	
	TOLERANCES UNLESS OTHERWISE SPECIFIED:	APVD A. GABANY 7-2-92	NAME	JACK, VERTICAL, PCB, 50 OHM, SERIES BNC	
	0 PLC ± -	PRODUCT SPEC	108-12078	SIZE	CAGE CODE DRAWING NO
1 PLC ± -	APPLICATION SPEC	—	—	RESTRICTED TO	
2 PLC ± 0.05 [.002]	—	—	—	—	
3 PLC ± -	—	—	—	—	
4 PLC ± -	—	—	—	—	
ANGLES ± -	—	—	—	—	
MATERIAL SEE NOTES 1-5	FINISH SEE NOTES 6-8	WEIGHT	A1 00779	SCALE 4:1	SHEET 1 OF 1
CUSTOMER DRAWING		REV	227673		

X-ON Electronics

Largest Supplier of Electrical and Electronic Components

Click to view similar products for [RF Connectors / Coaxial Connectors](#) category:

Click to view products by [TE Connectivity](#) manufacturer:

Other Similar products are found below :

[8915-1511-000](#) [89674-0827](#) [6001-7071-019](#) [6002-7051-003](#) [6002-7551-202](#) [6059674-1](#) [619550-1](#) [630059-000](#) [M39030/3-01N](#) [6500-7071-046](#) [6769](#) [CX050L2AQ](#) [7002-1541-010](#) [7002-1542-011](#) [7004-1512-000](#) [7009-1511-004](#) [7010-1511-000](#) [7029-1511-060](#) [7101-1541-010](#) [7101-1571-002](#) [7105-1521-002](#) [7145-1521-002](#) [7203-1571-003](#) [7209-1511-011](#) [7210-1511-015](#) [7210-1511-019](#) [73137-5015](#) [73216-2241](#) [73404-2300](#) [7405-1521-005](#) [7405-1521-802](#) [8527](#) [8547](#) [FS11V](#) [877931](#) [9049-9513-000](#) [9074-9513-000](#) [9101-9573-002](#) [910A205F](#) [9130-9573-002](#) [PL11SC-026](#) [PL375-33](#) [PL40-5](#) [PL74C-221](#) [PL75MC-217](#) [PL803-7](#) [1200690078](#) [1-201144-1](#) [R107003010W](#) [R110A172100](#)