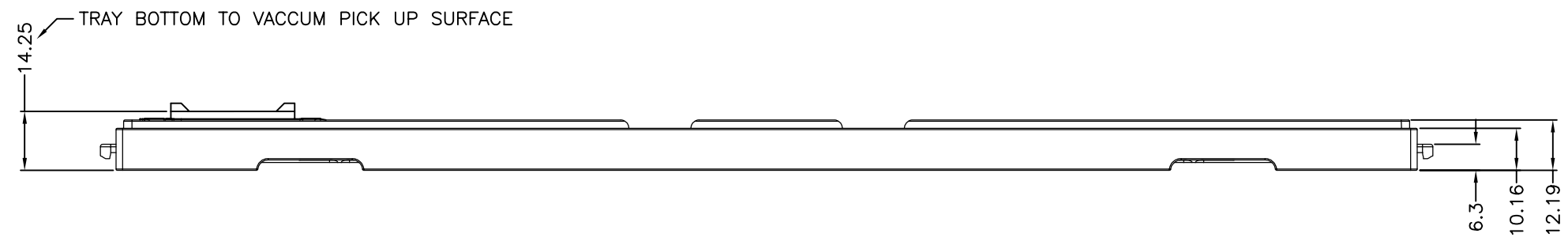
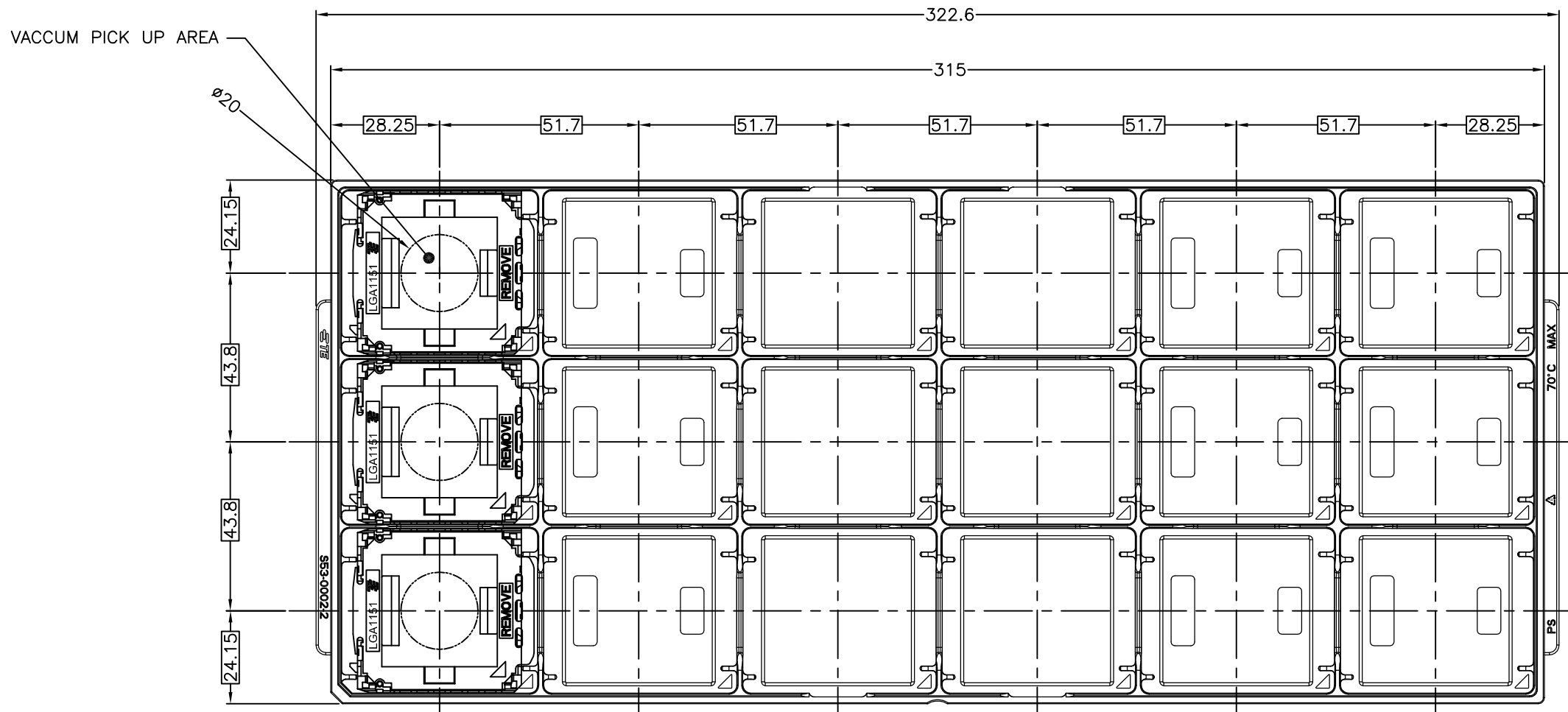


THIS DRAWING IS UNPUBLISHED. RELEASED FOR PUBLICATION MAR ,2011.  
 © COPYRIGHT 2011 By Tyco Electronics Japan G.K. ALL RIGHTS RESERVED.

LOC		DIST		REVISIONS			
J	-	P	LTR	DESCRIPTION	DATE	DWN	APVD
		B2	REVISED		FEB.17'16	J.W	S.L

D  
C  
B  
A

D  
C  
B  
A



- NOTES:  
 1. MATERIAL  
 ① HOUSING : LCP, HIGH TEMP, THERMO-PLASTIC, UL94V-0, BLACK  
 ② CONTACT : COPPER ALLOY  
 FINISH : Au PL. AT CONTACT AREA ON OVERALL OVER Ni UNDER PL. 0.00127 MIN.  
 ③ SOLDER BALL : Sn/Ag/Cu  
 ④ CAP : LCP, HIGH TEMP. THERMO-PLASTIC, UL94V-0, BLACK  
 △ INDICATED DATE CODE ON THE HSG

2287402-1,-2,-3: AS SHOWN

2287402-3	18	0.76 um MIN Au PL
2287402-2	18	G/F Au PL
2287402-1	18	0.38 um MIN Au PL
PART NUMBER	SOCKET QTY PRE TRAY	DESCRIPTION

THIS DRAWING IS A CONTROLLED DOCUMENT.

DWN	NOV.'2014	JEFF WANG	
CHK	NOV.'2014	MURRAY LU	
APVD	NOV.'2014	SIMON LI	
PRODUCT SPEC	108-78586	NAME	SIMON LI
APPLICATION SPEC	114-5444	SIZE	A2
WEIGHT	9.8g	CAGE CODE	00779
CUSTOMER DRAWING		DRAWING NO	C=2287402
		RESTRICTED TO	-
		SCALE	1:1
		SHEET	1 of 6
		REV	B2

TE Connectivity  
 SOCKET ASSY  
 LGA1151

THIS DRAWING IS UNPUBLISHED. RELEASED FOR PUBLICATION MAR , 2011.  
 © COPYRIGHT 2011 By Tyco Electronics Japan G.K. ALL RIGHTS RESERVED.

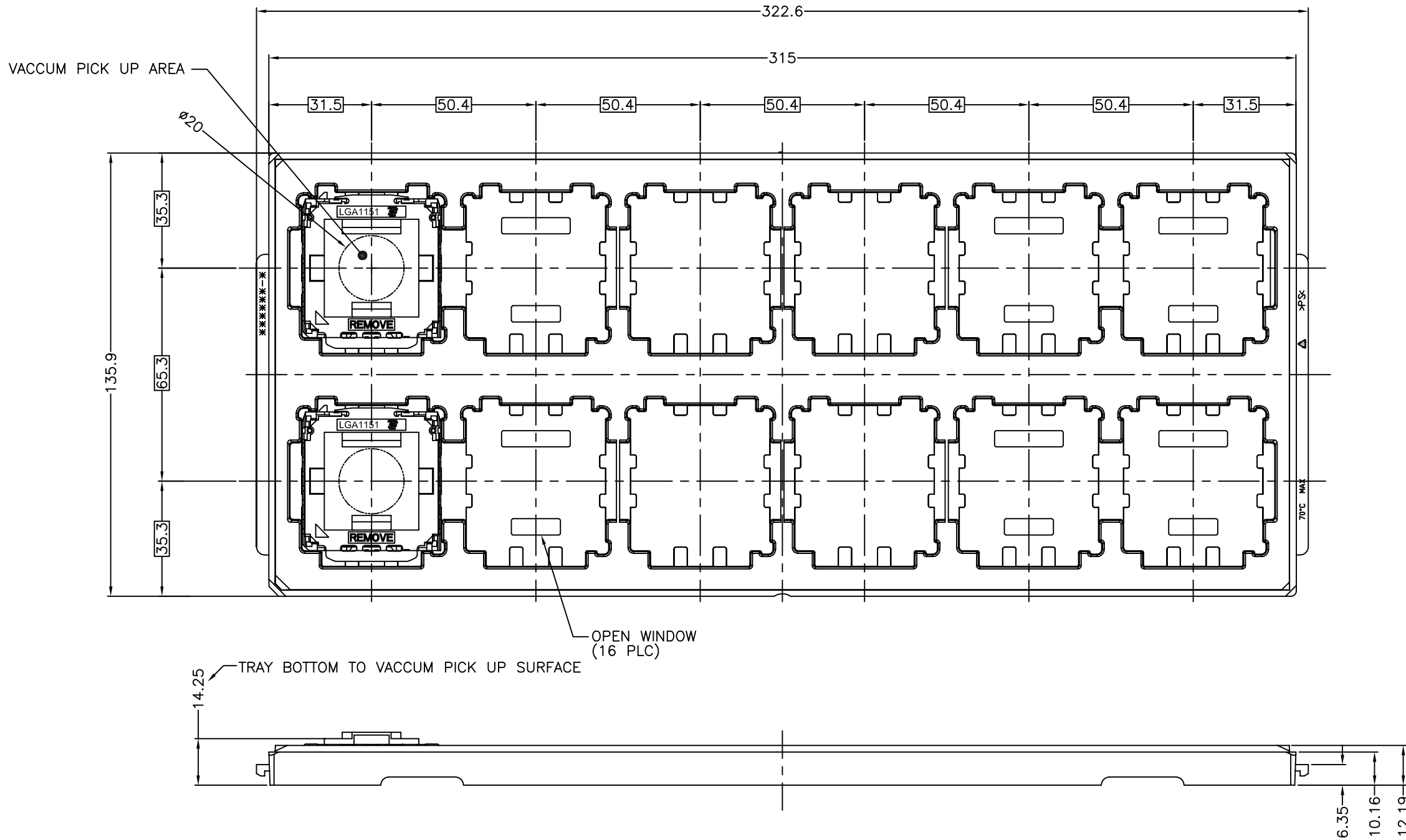
LOC	DIST	REVISIONS					
J	-	P	LTR	DESCRIPTION	DATE	DWN	APVD
		-		SEE SHEET 1	-	-	-

D

C

B

A



1-2287402-1,-2,-3: AS SHOWN

1-2287402-3	12	0.76 um MIN Au PL
1-2287402-2	12	G/F Au PL
1-2287402-1	12	0.38 um MIN Au PL
PART NUMBER	SOCKET QTY PRE TRAY	DESCRIPTION

THIS DRAWING IS A CONTROLLED DOCUMENT.

DWN	NOV.'2014	JEFF WANG	
CHK	NOV.'2014	MURRAY LU	
APVD	NOV.'2014	NAME	SIMON LI
PRODUCT SPEC	108-78586	SOCKET ASSY LGA1151	
APPLICATION SPEC	114-5444	SIZE	A2
WEIGHT	9.8g	CAGE CODE	00779
CUSTOMER DRAWING	SCALE 1:1	DRAWING NO	C=2287402
	SHEET 2 of 6	REV	B2

TE Connectivity

RESTRICTED TO

D

C

B

A

2287402

4

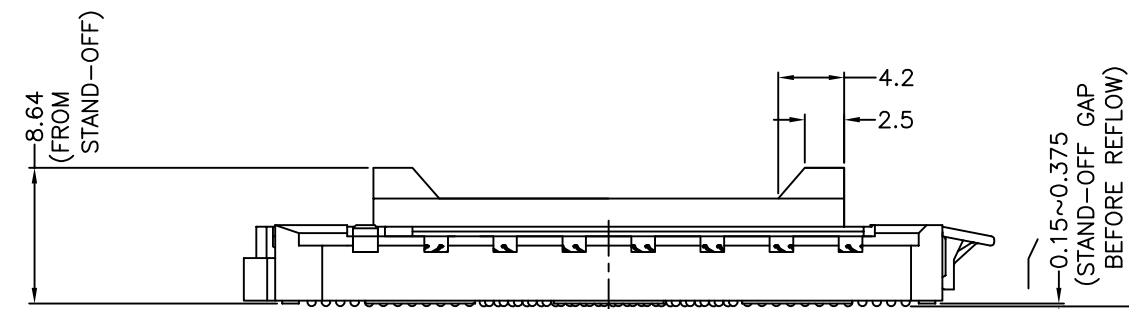
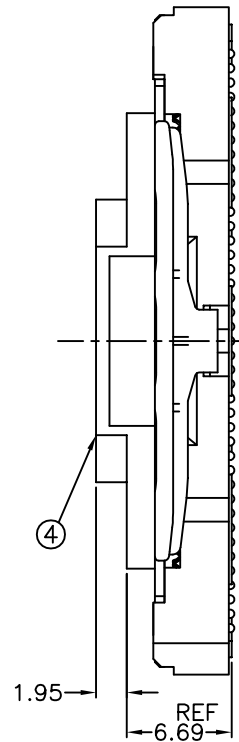
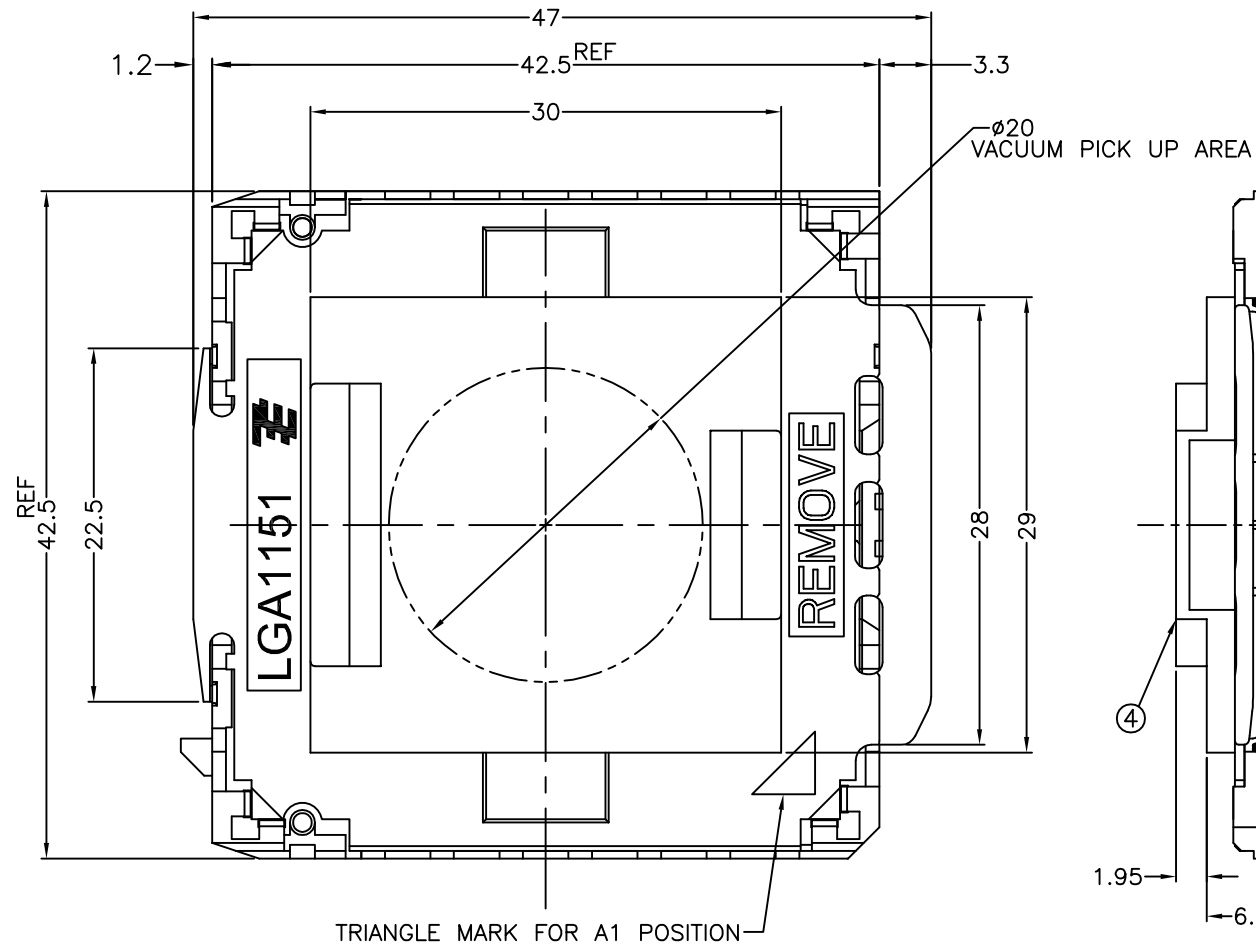
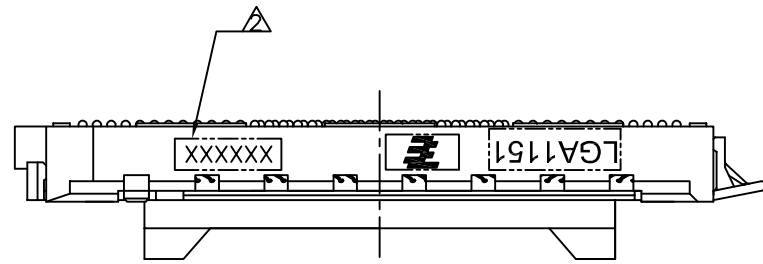
3

2

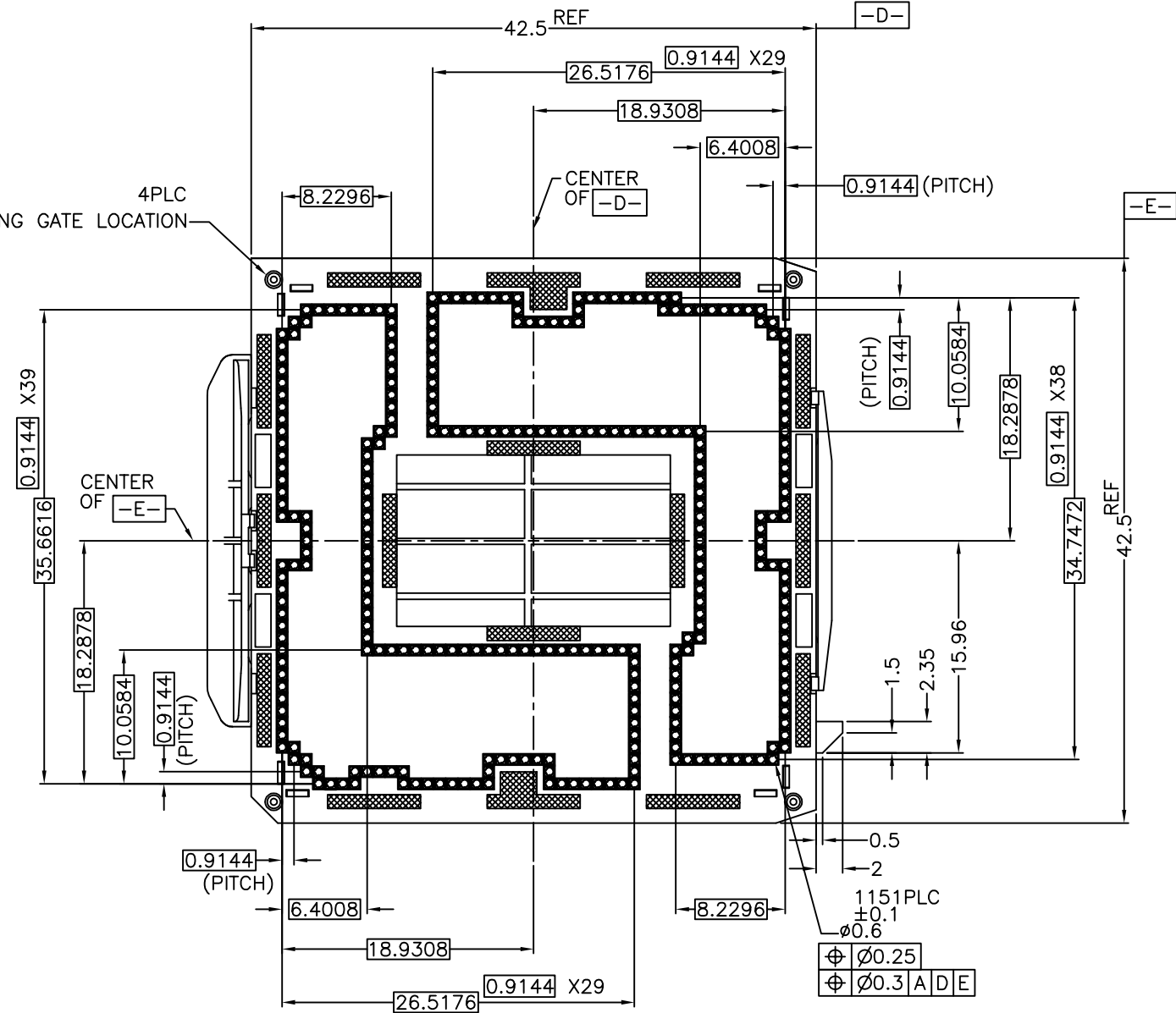
1

THIS DRAWING IS UNPUBLISHED. RELEASED FOR PUBLICATION  
 © COPYRIGHT - By Tyco Electronics Japan G.K. ALL RIGHTS RESERVED.

LOC	DIST	REVISIONS			DATE	DWN	APVD
		P	LTR	DESCRIPTION			
-	-	-	-	SEE SHEET 1	-	-	-



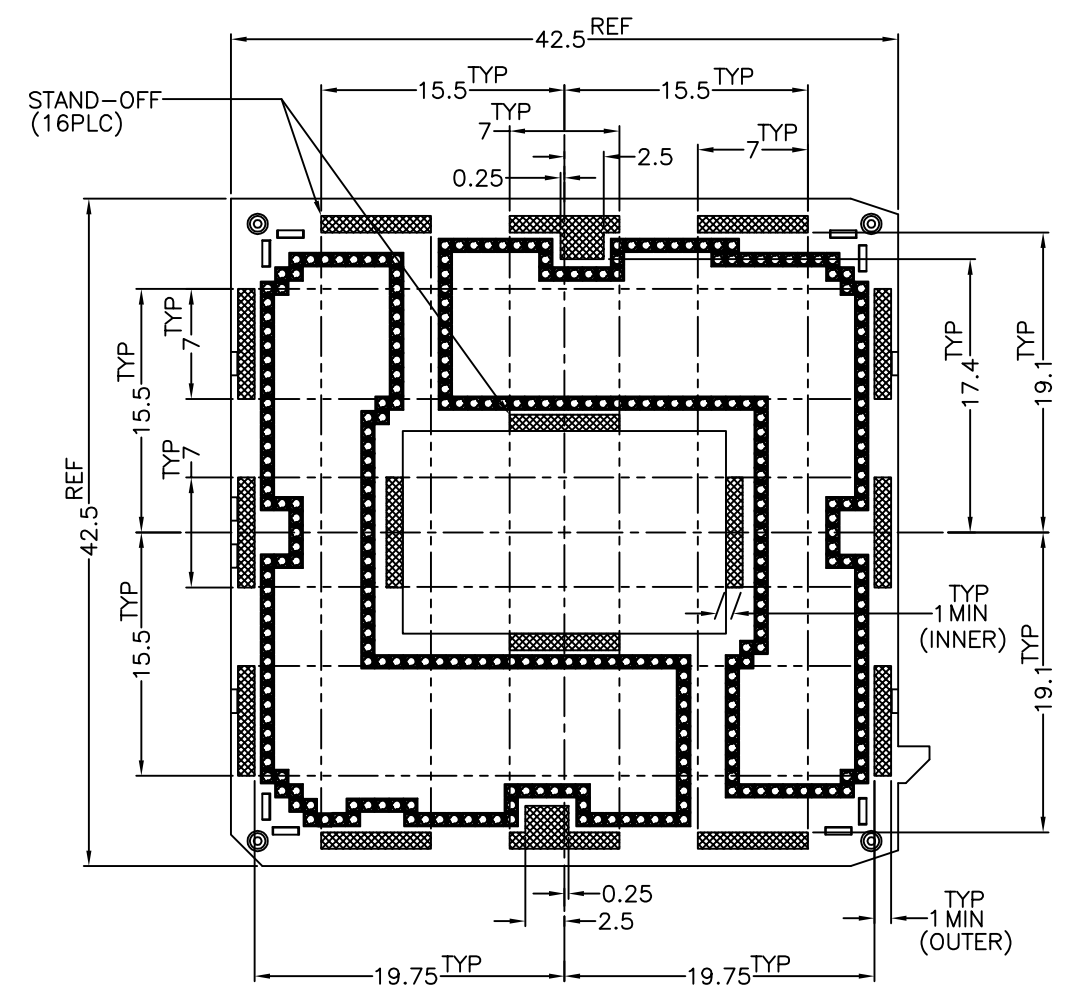
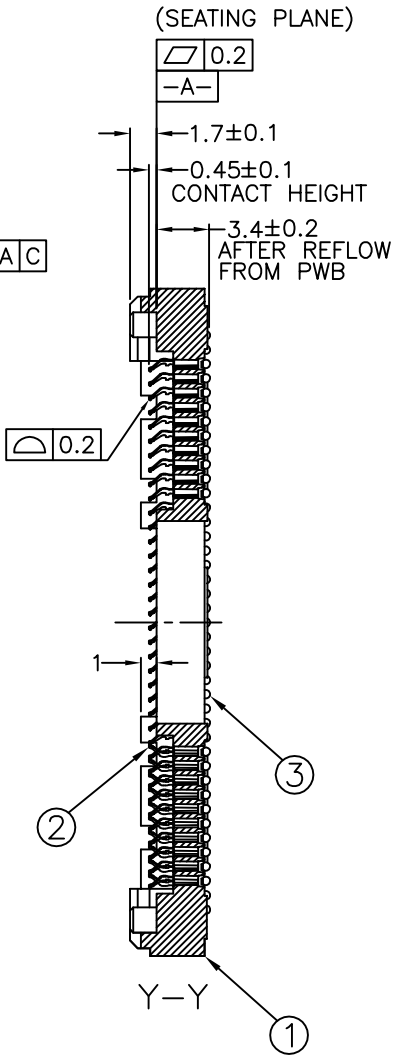
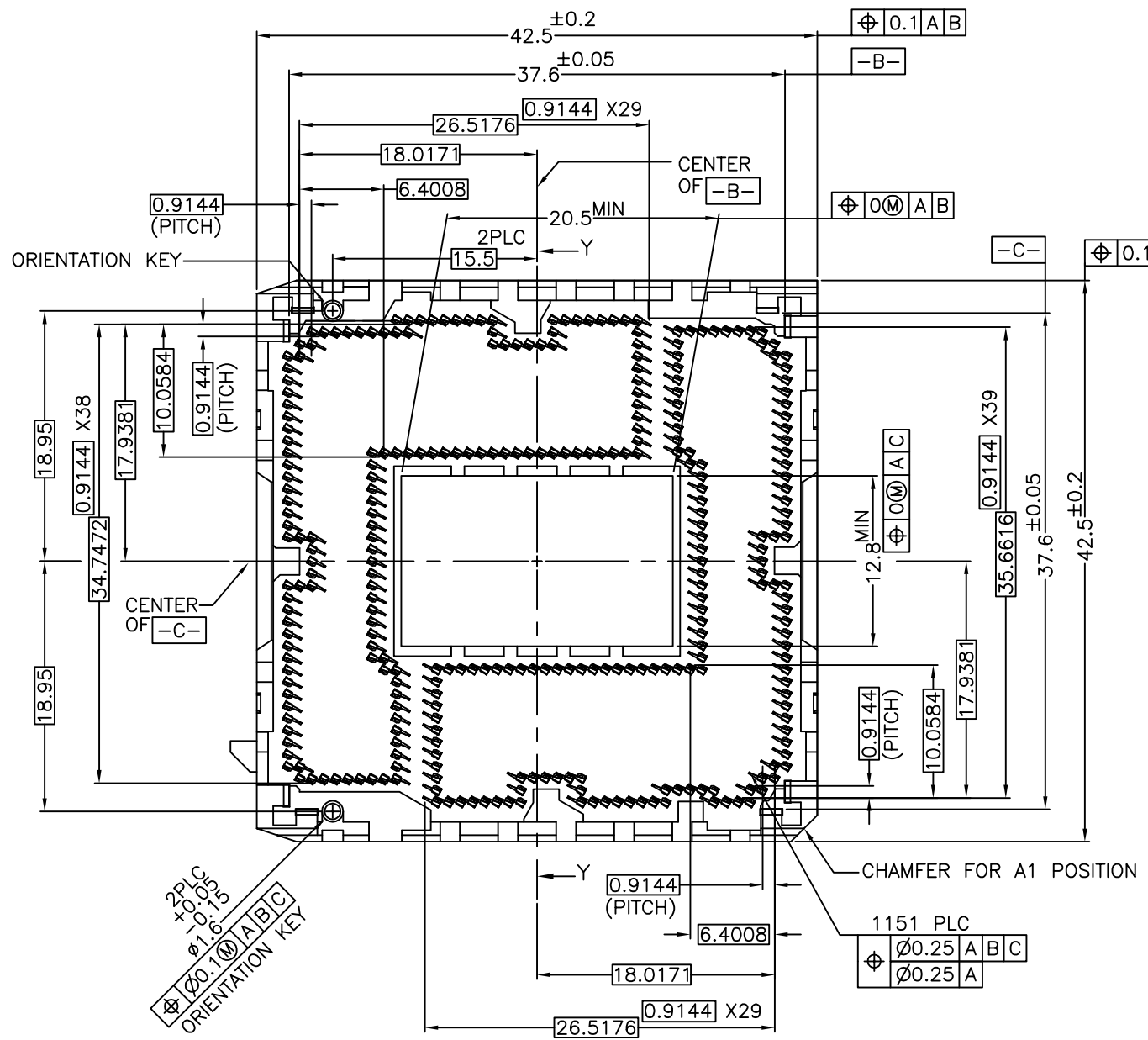
$\text{R}0.2$   
(SOLDER BALL COPLANARITY)



2287402-\*, 1-2287402-\*: AS SHOWN

THIS DRAWING IS A CONTROLLED DOCUMENT.		DWN	<b>TE</b> TE Connectivity	
DIMENSIONS: 単位: 寸 mm		CHK		
TOLERANCES UNLESS OTHERWISE SPECIFIED: 一般公差		APVD	NAME 名称	
0-PLC ±0.3		PRODUCT SPEC 製品規格	SOCKET ASSY LGA1151	
1-PLC ±0.3		APPLICATION SPEC 取付適用規格	SIZE A2	CAGE CODE 00779
2-PLC ±0.3		WEIGHT -	DRAWING NO 番号 C=2287402	RESTRICTED TO -
3-PLC ±0.3		CUSTOMER DRAWING	SCALE 尺度 NTS	SHEET 3 of 6
4-PLC ±0.3				REV B2
ANGLES 寸上				
FINISH 寸上				
MATERIAL 材料				

LOC		DIST		REVISIONS			DATE	DWN	APVD
P	LTR	DESCRIPTION							
-	-	SEE SHEET 1			-	-	-	-	-



2287402-\*, 1-2287402-\*: AS SHOWN

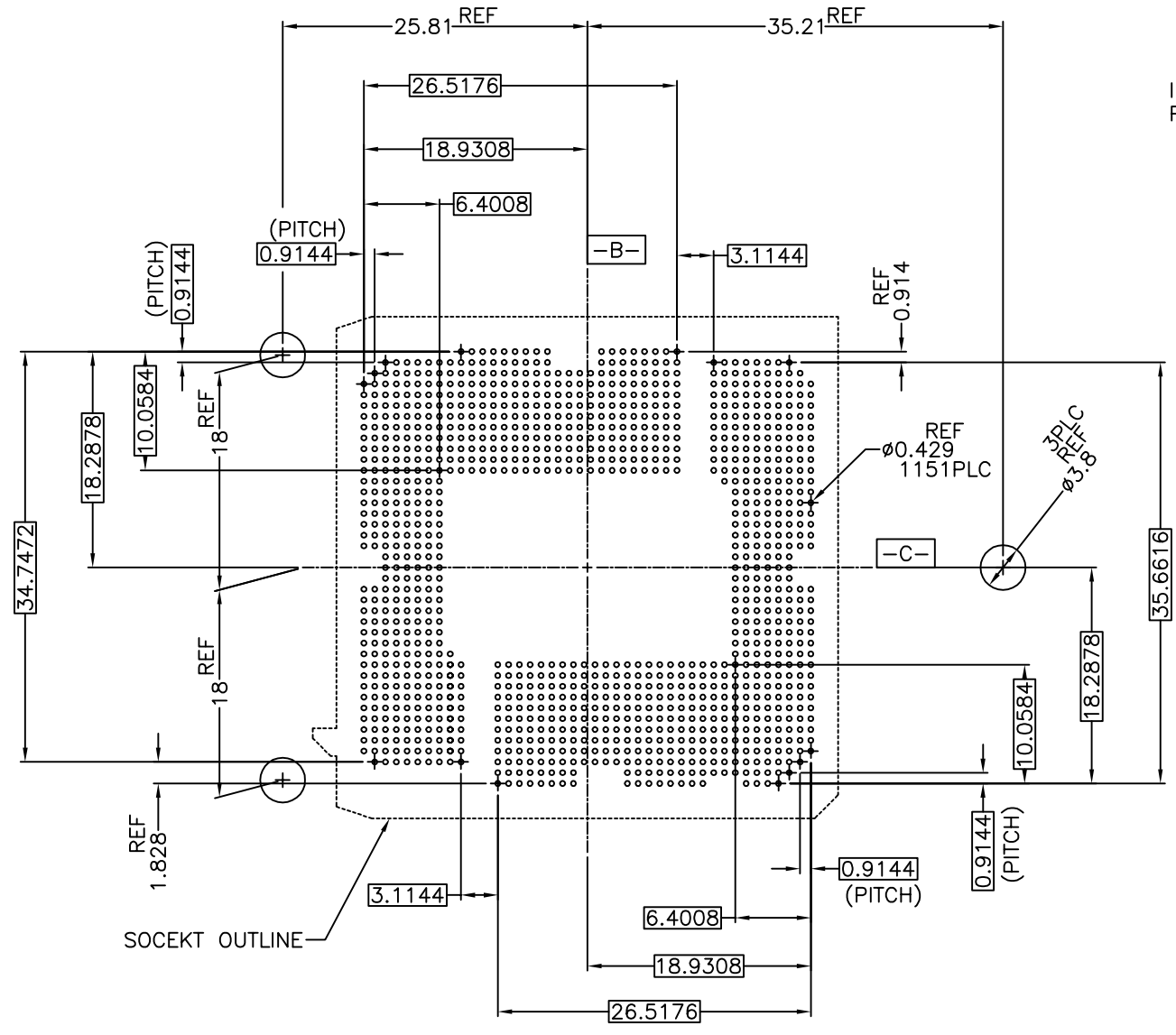
THIS DRAWING IS A CONTROLLED DOCUMENT.		DWN			TE Connectivity	
DIMENSIONS: 単位: 寸 mm		CHK			NAME 名称	
TOLERANCES UNLESS OTHERWISE SPECIFIED: 一般公差		APVD	PRODUCT SPEC 製品規格		SIZE	A2
0-PLC ±0.3		APPLICATION SPEC 取付適用規格		CAGE CODE	00779	DRAWING NO 番号
1-PLC ±0.3		WEIGHT		DRAWING NO 番号		RESTRICTED TO
2-PLC ±0.3		CUSTOMER DRAWING		C=2287402		
3-PLC ±0.3		SCALE 尺度		SHEET 4 of 6		REV B2
4-PLC ±0.3		FINISH 仕上		SCALE 尺度		NTS

THIS DRAWING IS UNPUBLISHED. RELEASED FOR PUBLICATION  
 © COPYRIGHT - By Tyco Electronics Japan G.K. ALL RIGHTS RESERVED.

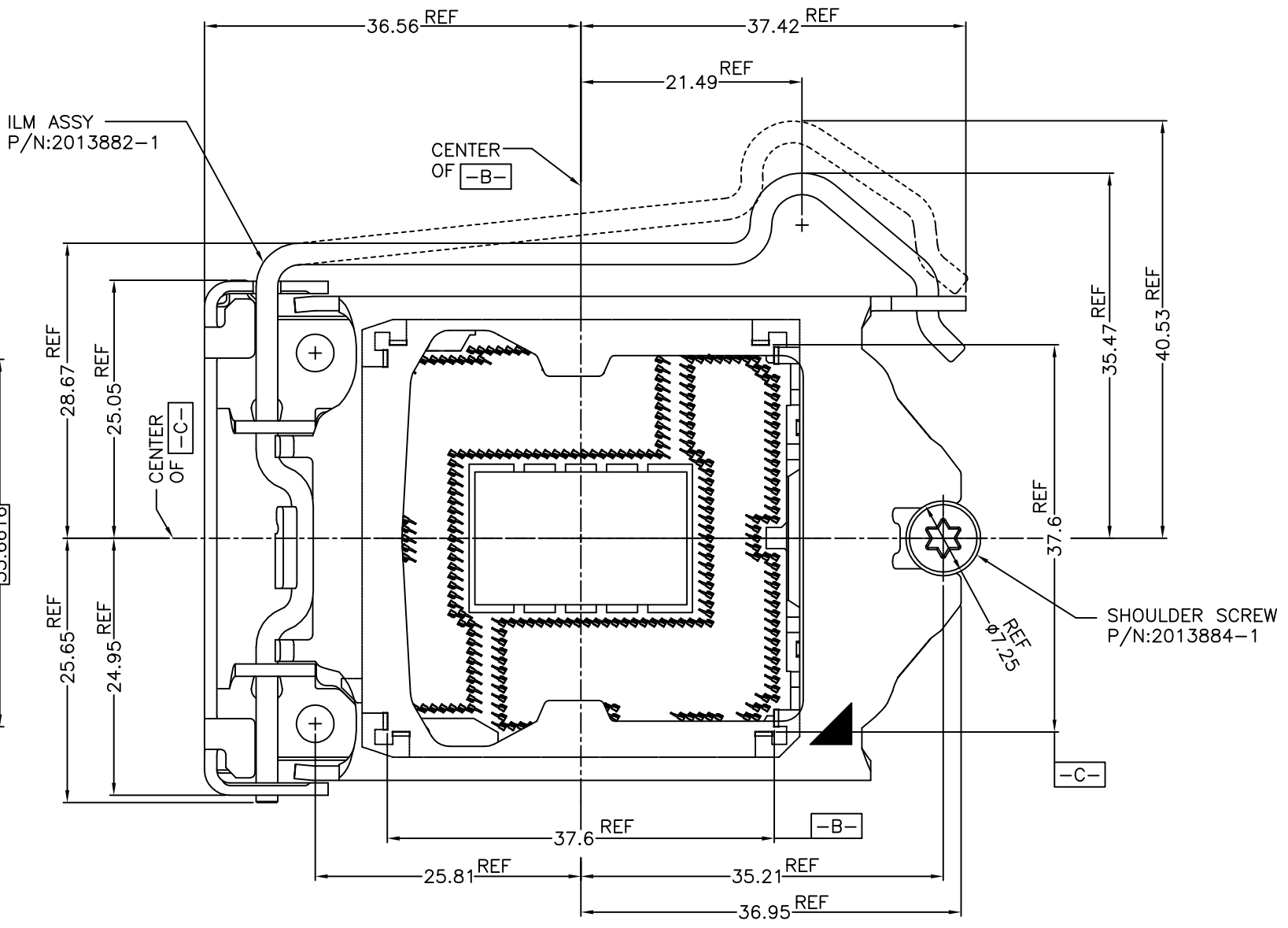
LOC	DIST	REVISIONS			DATE	DWN	APVD
		P	LTR	DESCRIPTION			
-	-	-	-	SEE SHEET 1	-	-	-

D  
C  
B  
A

D  
C  
B  
A



REFERENCE PATTERN LAYOUT

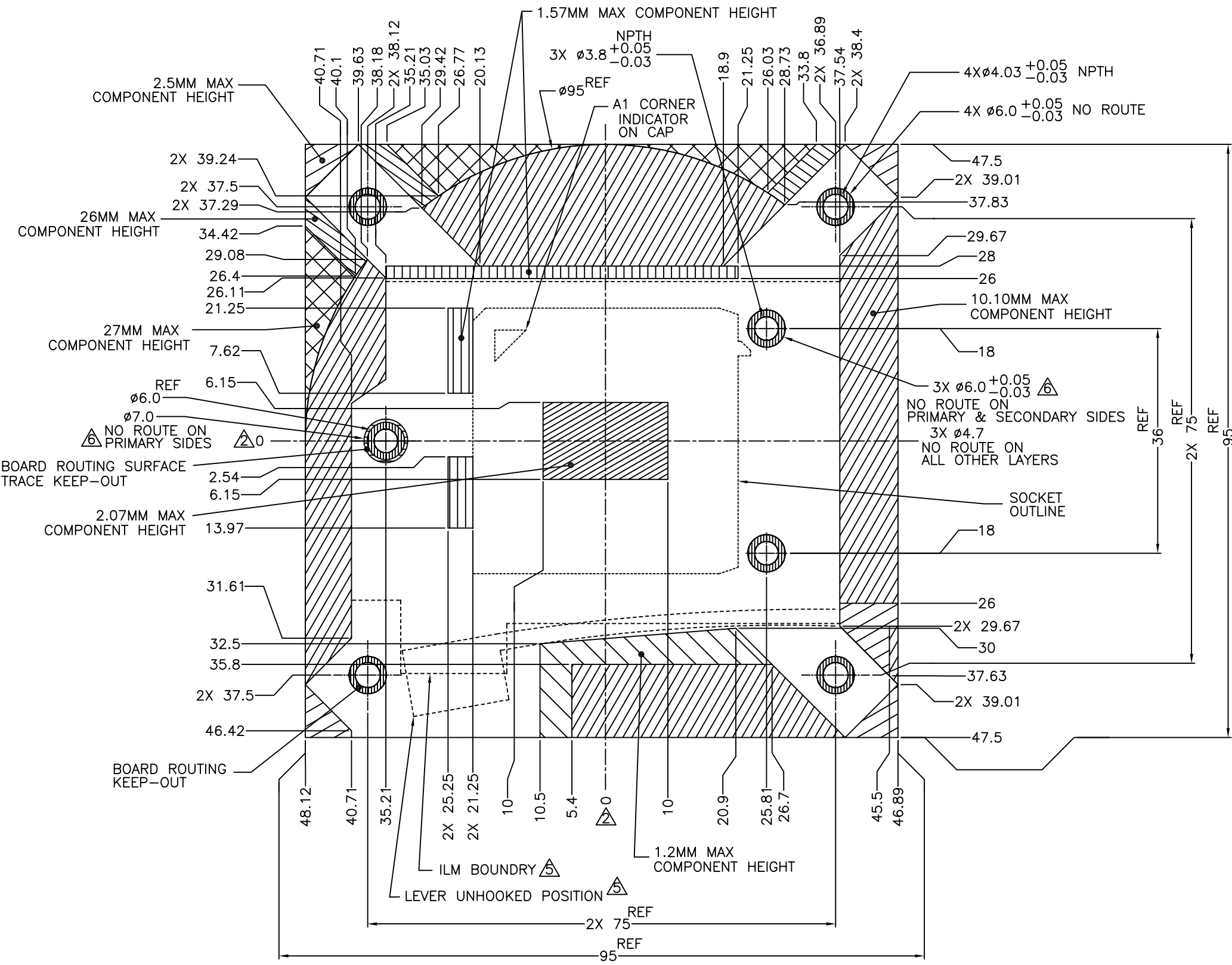


ILM ASSEMBLY OCCUPATION AREA (REFERENCE)  
 CAP IS NOT SHOWN ON THIS VIEW

FOR GENERAL BOARD DESIGN, PLEASE REFER TO THE THERMAL AND MECHANICAL DESIGN GUIDELINES(TMDG) PROVIDED BY INTEL CORPORATION

THIS DRAWING IS A CONTROLLED DOCUMENT.		DWN	<b>STE</b> TE Connectivity	
DIMENSIONS: 単位: 寸 mm		CHK		
TOLERANCES UNLESS OTHERWISE SPECIFIED: 一般公差		APVD	NAME 名称	
0-PLC ±0.3		PRODUCT SPEC 製品規格	SOCKET ASSY LGA1151	
1-PLC ±0.3		APPLICATION SPEC 取付適用規格	SIZE	CAGE CODE
2-PLC ±0.3		WEIGHT	A2	00779
3-PLC ±0.3		CUSTOMER DRAWING	DRAWING NO 番号	RESTRICTED TO
4-PLC ±0.3			C-2287402	
ANGLES		SCALE 尺度	NTS	SHEET 5 of 6
FINISH 仕上		REV	B2	

LOC	DIST	REVISIONS					
		P	LTR	DESCRIPTION	DATE	DWN	APVD
-	-	-	-	SEE SHEET 1	-	-	-



- NOTES (APPLIED TO SHEET 5 OF 5):
1. DIMENSIONS ARE IN MILLIMETERS
  2.  $\triangle$  GEOMETRIC CENTER OF SOCKET HOUSING CAVITY
  3. BOARD COMPONENT KEEP-INS AND MECHANICAL COMPONENT KEEP-OUTS TO BE UTILIZED WITH SUFFICIENT ALLOWANCES FOR PLACEMENT AND SIZE TOLERANCES, ASSEMBLY PROCESS ACCESS, AND DYNAMIC EXCURSIONS.
  4. ASSUME SYMMETRY FOR UNDIMENSIONED CORNERS AND EDGES.  $\triangle$  FOR UNDEFINED DIMENSIONS, REFER TO THERMAL AND MECHANICAL DESIGN GUIDELINE PROVIDED BY INTEL CORPORATION.
  5.  $\triangle$  COPPER PAD ON PRIMARY SIDE, NON-GROUNDED. COPPER PAD CAN INSET A MAXIMUM OF 0.127MM FROM THE NO ROUTE EDGE
  6.  $\triangle$  COMBINED COMPONENT AND SOLDER PASTE HEIGHT INCLUDING TOLERANCES AFTER REFLOW.

COMPONENT KEEP-INS AND MECHANICAL COMPONENT KEEP-OUTS  
 FOR REFERENCE ONLY, PLEASE REFER TO THE THERMAL AND MECHANICAL  
 DESIGN GUIDELINES(TMDG) PROVIDED BY INTEL CORPORATION

LEGEND	
	SOCKET/THERMAL/MECHANICAL COMPONENT KEEP-INS
	10.10MM MAX COMPONENT HEIGHT $\triangle$
	1.57MM MAX COMPONENT HEIGHT $\triangle$
	1.2MM MAX COMPONENT HEIGHT $\triangle$
	BOARD ROUTING KEEP-OUT
	27MM MAX COMPONENT HEIGHT $\triangle$
	BOARD ROUTING SURFACE TRACE KEEP-OUT $\triangle$
	2.07MM MAX COMPONENT HEIGHT $\triangle$
	2.5MM MAX COMPONENT HEIGHT $\triangle$
	26MM MAX COMPONENT HEIGHT $\triangle$

THIS DRAWING IS A CONTROLLED DOCUMENT.

DIMENSIONS: 単位: 寸 mm	TOLERANCES UNLESS OTHERWISE SPECIFIED: 一般公差	DWN	TE Connectivity
	0-PLC ± 1-PLC ± 2-PLC ± 3-PLC ± 4-PLC ± ANGLES ±	CHK	NAME
MATERIAL 材料	FINISH 仕上	APVD	SOCKET ASSY LGA1151
		PRODUCT SPEC 製品規格	SIZE CAGE CODE DRAWING NO 番号
		APPLICATION SPEC 取付適用規格	A2 00779 C-2287402
		WEIGHT	RESTRICTED TO
		CUSTOMER DRAWING	SCALE 尺度 NTS SHEET 6 of 6 REV B2

## X-ON Electronics

Largest Supplier of Electrical and Electronic Components

*Click to view similar products for [IC & Component Sockets](#) category:*

*Click to view products by [TE Connectivity](#) manufacturer:*

Other Similar products are found below :

[0066-3-17-15-30-14-02-0](#) [670](#) [672](#) [673](#) [694-13-640-00-672-000](#) [712-93-120-41-001000](#) [714-93-104-31-018000](#) [8059-4G1-LF](#) [807-22-001-10-001101](#) [807-22-001-10-006101](#) [807-22-001-30-011101](#) [807-22-001-30-012101](#) [807-22-001-30-013101](#) [807-22-001-30-014101](#) [8-1437531-4](#) [8150-6P10](#) [833-93-034-10-001000](#) [851-41-006-10-001000](#) [851-43-008-20-001000](#) [851-43-014-20-001000](#) [851-93-006-20-001000](#) [851-93-010-20-001000](#) [853-43-020-10-001000](#) [86.010.0053.0](#) [116-43-308-41-007000](#) [PX-68LCC](#) [121-13-318-41-001000](#) [121-13-320-41-001000](#) [121-13-308-41-001000](#) [123-43-314-41-801000](#) [123-43-420-41-001000](#) [122-13-316-41-001000](#) [123-13-624-41-001000](#) [123-43-306-41-001000](#) [12-3513-11](#) [123-91-320-41-001000](#) [126-43-310-41-002000](#) [AKSUN 37V-T](#) [1437503-9](#) [1437504-1](#) [146-44-308-41-013000](#) [146-43-308-41-012000](#) [160-10-308-00-001000](#) [160-40-320-00-001000](#) [214-99-306-01-670800](#) [232-1270-02-0602](#) [2-382761-4](#) [2-5331677-4](#) [2-640360-3](#) [2801-2-00-50-00-00-07-0](#)