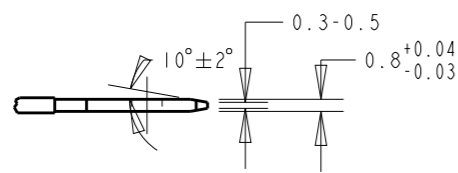


REVISIONS

P	LTR	DESCRIPTION	DATE	DWN	APVD
A11	ECR-20-010317		22JULY20	DT	EW

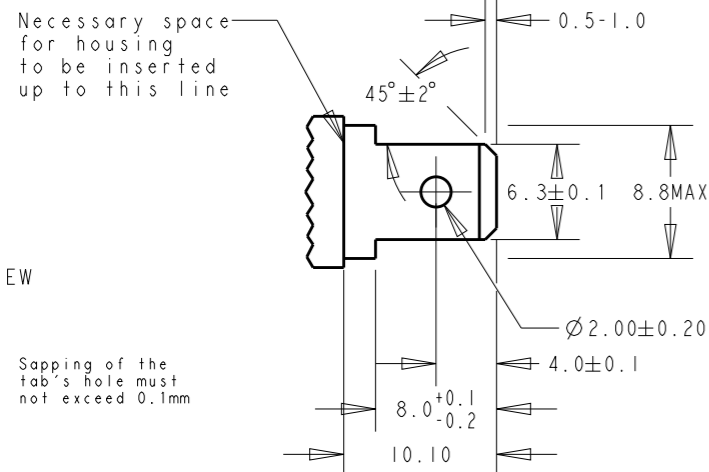
SUGGESTED MATING TAB

SIDE VIEW



Necessary space for housing to be inserted up to this line

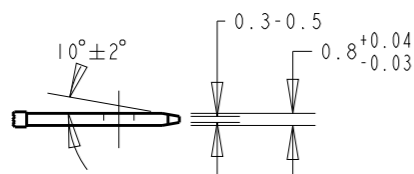
TOP VIEW



Sapping of the tab's hole must not exceed 0.1mm

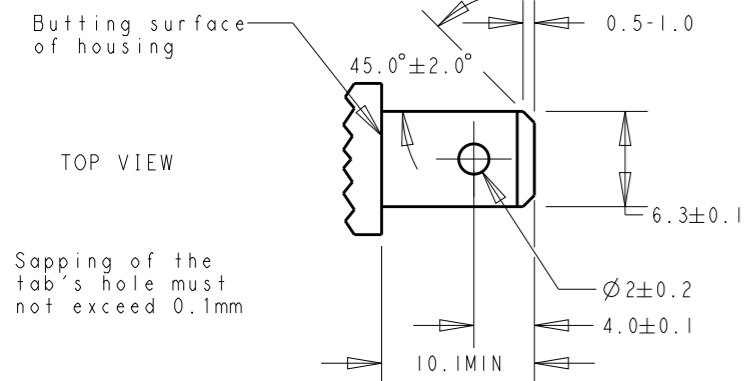
TYPE A (When using tab shoulder for butting)

SIDE VIEW



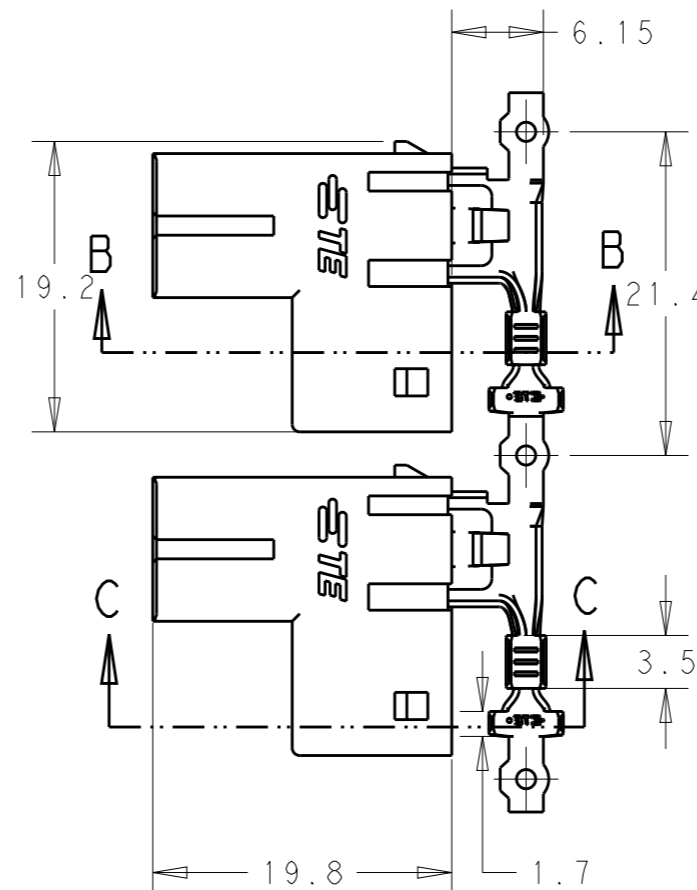
Butting surface of housing

TOP VIEW



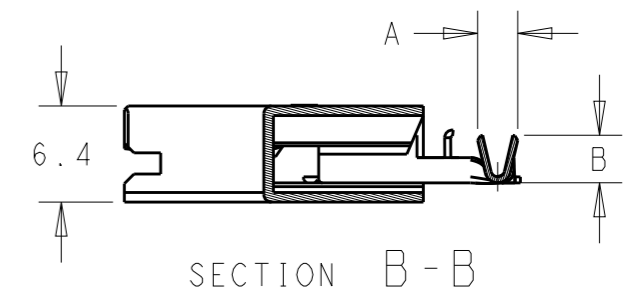
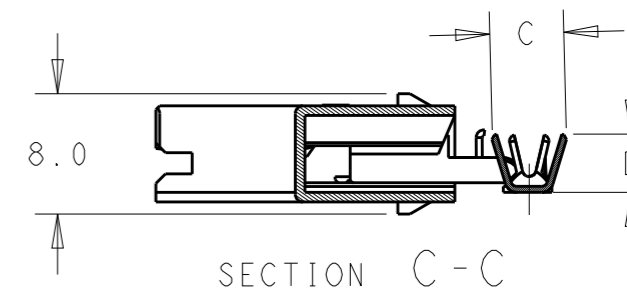
Sapping of the tab's hole must not exceed 0.1mm

TYPE B (When using resin, etc. for butting)



NOTE:

- CONTACT MATERIAL, TIN PLATED BRASS.
- HOUSING MATERIAL, NYLON 6/66, GLASS-FIBRE. UL94V-0.
- GWT 750°C VERSION, ACCORDING TO IEC 60335-1.
- NEW PN WITH DIFFERENT PACKAGING QTY AND SMALLER REELING SIZE(24in).



4	6.9REF. (HIGH SIDE)	6.6	4.5REF.	4.2	2.2-3.0	22-18	3-2299280-3
	3.6REF. (SHORT SIDE)				3.40-4.32	14-12	3-2299280-2
4	3.9REF.	4.9	3.1REF.	2.7	2.2-3.0	22-18	3-2299280-1
	6.9REF. (HIGH SIDE)				3.40-4.32	14-12	2299280-3
	3.6REF. (SHORT SIDE)				3.0-4.0	16-14	2299280-2
	3.9REF.				2.2-3.0	22-18	2299280-1
	DIM D	DIM C	DIM B	DIM A	INSULATION	WIRE SIZE (AWG)	P/N

THIS DRAWING IS A CONTROLLED DOCUMENT.		DWN LEI PAN 08FEB2017	TE Connectivity	
DIMENSIONS: mm		CHK TIM DING 08FEB2017		
TOLERANCES UNLESS OTHERWISE SPECIFIED:		APVD TIM DING 08FEB2017	NAME POD-LOK 250 FLAG ASSY.	
0 PLC ±- 1 PLC ±0.3 2 PLC ±0.25 3 PLC ±- 4 PLC ±- ANGLES ±-		PRODUCT SPEC 108-106262	RESTRICTED TO	
MATERIAL		APPLICATION SPEC 114-106262	SIZE A3	CAGE CODE -
FINISH		WEIGHT -	DRAWING NO C-2299280	SCALE 2:1
		CUSTOMER DRAWING	SHEET 1 OF 1	REV A11

X-ON Electronics

Largest Supplier of Electrical and Electronic Components

Click to view similar products for [Terminals](#) category:

Click to view products by [TE Connectivity](#) manufacturer:

Other Similar products are found below :

[00-054007-01074-6](#) [00-054007-70206-1](#) [00-054007-70210-8](#) [00-054007-70217-7](#) [00-054007-70226-9](#) [00-054007-70228-3](#) [00-054007-70248-1](#) [00-054007-70256-6](#) [00-054007-70301-3](#) [00-054007-70316-7](#) [00-054007-49560-4](#) [00-054007-70209-2](#) [00-054007-70225-2](#) [00-054007-70227-6](#) [00-054007-70231-3](#) [00-054007-70241-2](#) [00-054007-70242-9](#) [00-054007-70244-3](#) [00-054007-70246-7](#) [00-054007-70263-4](#) [00-054007-70288-7](#) [00-054007-70290-0](#) [00-054007-70300-6](#) [00-054007-70304-4](#) [01-2065-1-0216](#) [01-2900-1-04412](#) [00581P0075](#) [600TS-10](#) [60205-1](#) [604200-1](#) [605601-1](#) [60598-1-CUT-TAPE](#) [61314-6-C](#) [61810-3](#) [61-S](#) [61-SN](#) [626-0194](#) [62-NBM-A](#) [62-SN](#) [62-SP](#) [63-S](#) [640179-1](#) [M55155/059I03](#) [M55155/079C01](#) [M55155/099H02](#) [M55155/109H01](#) [M55155/109H02](#) [M55155/12XH05](#) [M55155/16XH02](#) [M55155/29-5S](#)