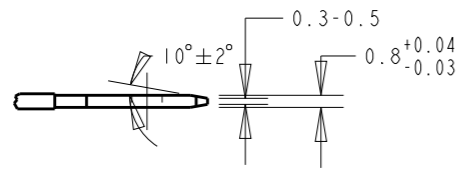


REVISIONS

| P | LTR | DESCRIPTION | DATE | DWN | APVD |
|-----|---------------|-------------|----------|-----|------|
| A11 | ECR-20-010317 | | 22JULY20 | DT | EW |

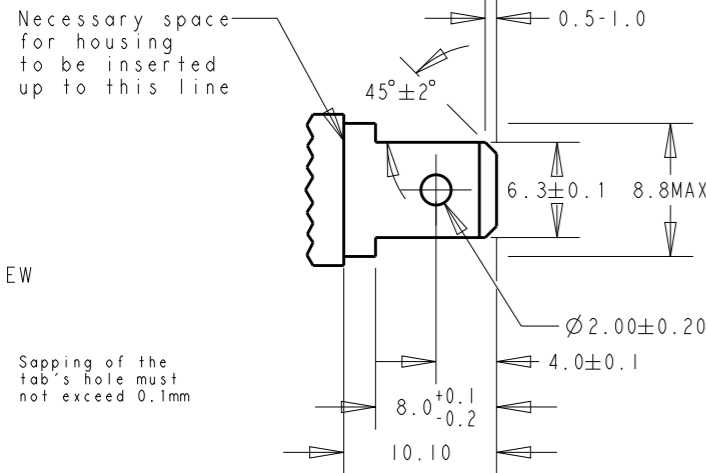
SUGGESTED MATING TAB

SIDE VIEW



Necessary space for housing to be inserted up to this line

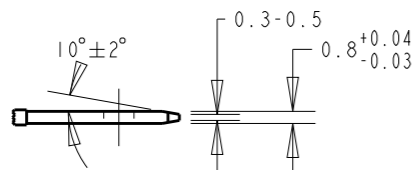
TOP VIEW



Sapping of the tab's hole must not exceed 0.1mm

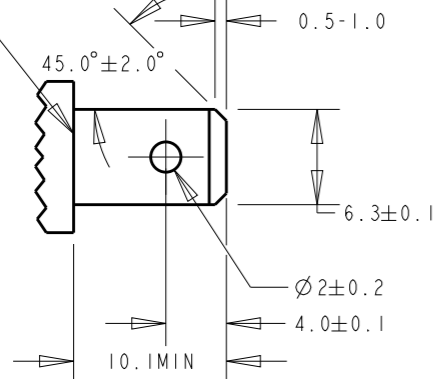
TYPE A (When using tab shoulder for butting)

SIDE VIEW



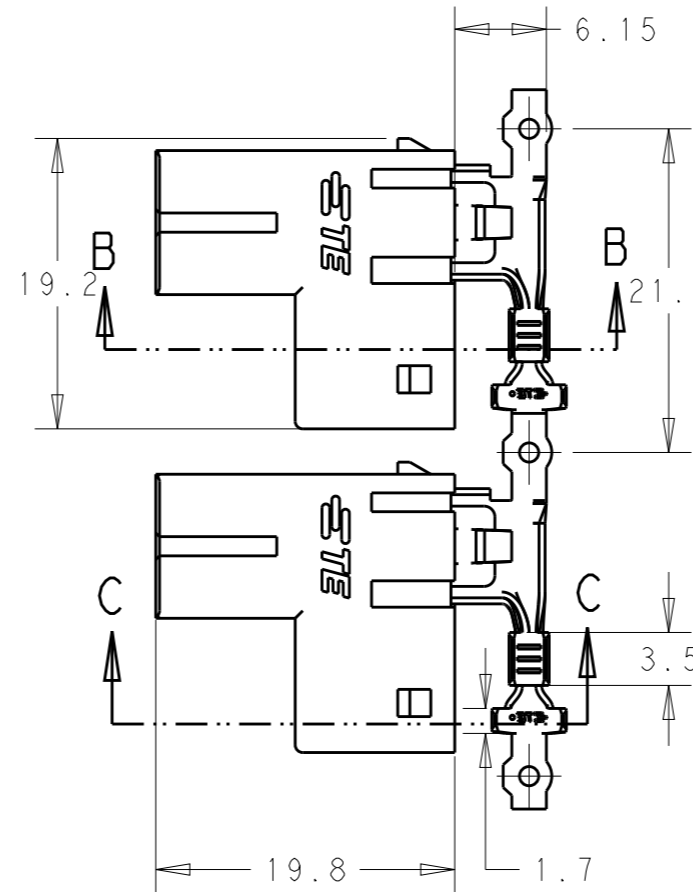
Butting surface of housing

TOP VIEW



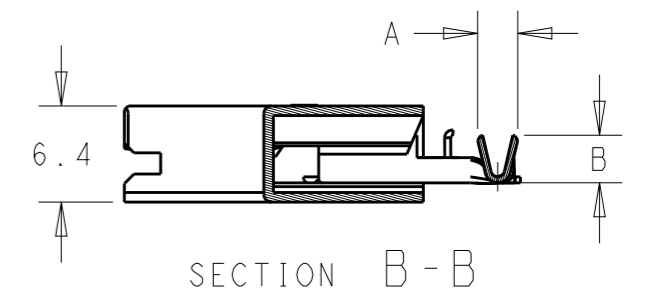
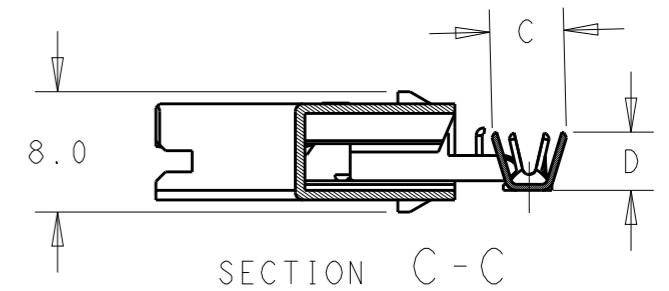
Sapping of the tab's hole must not exceed 0.1mm

TYPE B (When using resin, etc. for butting)



NOTE:

- CONTACT MATERIAL, TIN PLATED BRASS.
- HOUSING MATERIAL, NYLON 6/66, GLASS-FIBRE. UL94V-0.
- GWT 750°C VERSION, ACCORDING TO IEC 60335-1.
- NEW PN WITH DIFFERENT PACKAGING QTY AND SMALLER REELING SIZE(24in).



| | | | | | | | |
|---|----------------------|-------|---------|-------|------------|-----------------|-------------|
| 4 | 6.9REF. (HIGH SIDE) | 6.6 | 4.5REF. | 4.2 | 2.2-3.0 | 22-18 | 3-2299280-3 |
| | 3.6REF. (SHORT SIDE) | | | | 3.40-4.32 | 14-12 | 3-2299280-2 |
| 4 | 3.9REF. | 4.9 | 3.1REF. | 2.7 | 2.2-3.0 | 22-18 | 3-2299280-1 |
| | 6.9REF. (HIGH SIDE) | | | | 3.40-4.32 | 14-12 | 2299280-3 |
| | 3.6REF. (SHORT SIDE) | | | | 3.0-4.0 | 16-14 | 2299280-2 |
| | 3.9REF. | | | | 2.2-3.0 | 22-18 | 2299280-1 |
| | DIM D | DIM C | DIM B | DIM A | INSULATION | WIRE SIZE (AWG) | P/N |

| | | | | |
|--|--|--------------------------------|--------------------------------|----------------|
| THIS DRAWING IS A CONTROLLED DOCUMENT. | | DWN LEI PAN 08FEB2017 | TE Connectivity | |
| DIMENSIONS: mm | | CHK TIM DING 08FEB2017 | | |
| TOLERANCES UNLESS OTHERWISE SPECIFIED: | | APVD TIM DING 08FEB2017 | NAME POD-LOK 250 FLAG ASSY. | |
| 0 PLC ±- 1 PLC ±0.3 2 PLC ±0.25 3 PLC ±- 4 PLC ±- ANGLES ±- | | PRODUCT SPEC 108-106262 | RESTRICTED TO | |
| MATERIAL | | APPLICATION SPEC 114-106262 | SIZE A3 | CAGE CODE - |
| FINISH | | WEIGHT - | DRAWING NO C-2299280 | SCALE 2:1 |
| | | CUSTOMER DRAWING | SHEET 1 OF 1 | REV A11 |

X-ON Electronics

Largest Supplier of Electrical and Electronic Components

Click to view similar products for [Terminals](#) category:

Click to view products by [TE Connectivity](#) manufacturer:

Other Similar products are found below :

[00-054007-01074-6](#) [00-054007-70206-1](#) [00-054007-70210-8](#) [00-054007-70217-7](#) [00-054007-70226-9](#) [00-054007-70228-3](#) [00-054007-70248-1](#) [00-054007-70256-6](#) [00-054007-70301-3](#) [00-054007-70316-7](#) [0-0320562-0](#) [00-054007-49560-4](#) [00-054007-70209-2](#) [00-054007-70225-2](#) [00-054007-70227-6](#) [00-054007-70231-3](#) [00-054007-70241-2](#) [00-054007-70242-9](#) [00-054007-70244-3](#) [00-054007-70246-7](#) [00-054007-70263-4](#) [00-054007-70288-7](#) [00-054007-70290-0](#) [00-054007-70300-6](#) [00-054007-70304-4](#) [01-2065-1-0216](#) [01-2900-1-04412](#) [00581P0075](#) [600TS-10](#) [60205-1](#) [604200-1](#) [605601-1](#) [60598-1-CUT-TAPE](#) [61314-6-C](#) [61810-3](#) [61-S](#) [61-SN](#) [626-0194](#) [62-NBM-A](#) [62-SN](#) [62-SP](#) [63-S](#) [640179-1](#) [M55155/059I03](#) [M55155/079C01](#) [M55155/099H02](#) [M55155/109H01](#) [M55155/109H02](#) [M55155/12XH05](#) [M55155/16XH02](#)