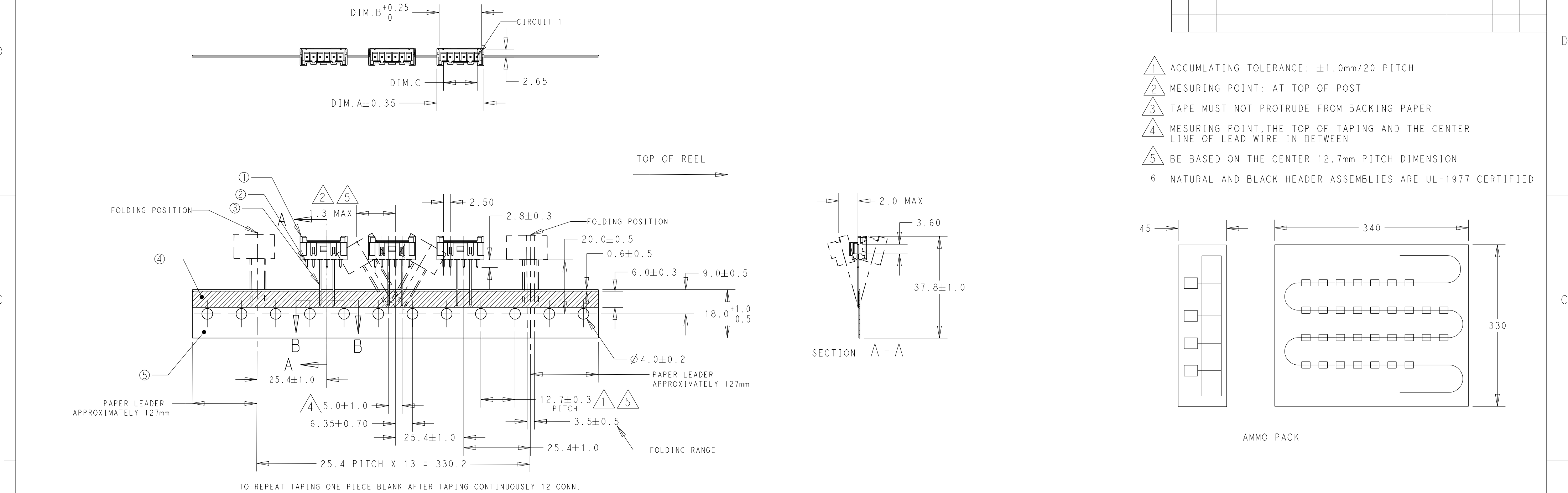
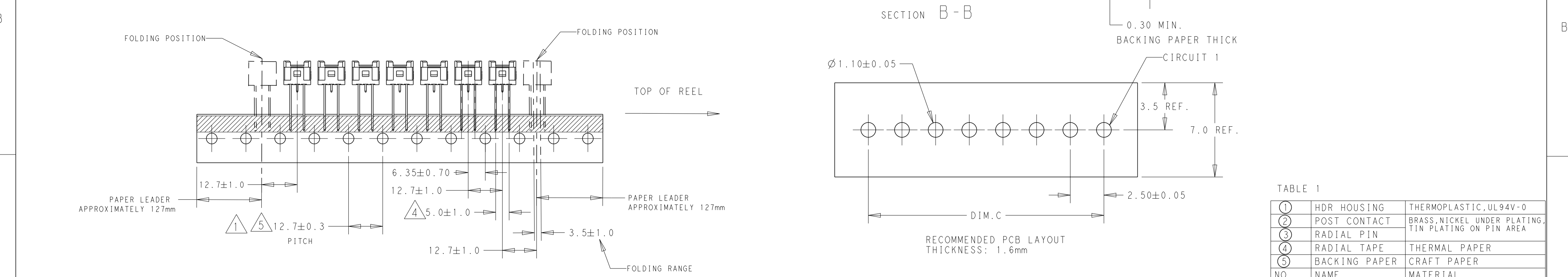


TAPING STYLE B: 4POS. THRU 8POS.



TAPING STYLE A: 2POS. AND 3POS.



THIS DRAWING IS A CONTROLLED DOCUMENT.

DIMENSIONS:

mm

TOLERANCES UNLESS OTHERWISE SPECIFIED:

0 PLC ± 0.50

1 PLC ± 0.30

2 PLC ± 0.20

3 PLC \pm

4 PLC \pm

ANGLES $\pm 3^\circ$

FINISH

MATERIAL

SEE TABLE 1

DWN OTTO CHEN 15FEB2016

CHK DANIEL Z 16FEB2016

APVD DANIEL Z 16FEB2016

PRODUCT SPEC 108-2418

APPLICATION SPEC 114-13315

WEIGHT -

CUSTOMER DRAWING

TABLE 1

| | | |
|-----|---------------|--|
| ① | HDR HOUSING | THERMOPLASTIC, UL94V-0 |
| ② | POST CONTACT | BRASS, NICKEL UNDER PLATING, TIN PLATING ON PIN AREA |
| ③ | RADIAL PIN | |
| ④ | RADIAL TAPE | THERMAL PAPER |
| ⑤ | BACKING PAPER | CRAFT PAPER |
| NO. | NAME | MATERIAL |

TE Connectivity

NAME

HEADER ASSEMBLY, VERTICAL
ECONOMY POWER, 2.5mm CENTERLINE
TAPING VERSION

SIZE

CAGE CODE

DRAWING NO

RESTRICTED TO

A200779

C-2299683

SCALE N/A

SHEET 1 OF 2

REV C1

THIS DRAWING IS UNPUBLISHED.

RELEASED FOR PUBLICATION

© COPYRIGHT copyright.dBTe

ALL RIGHTS RESERVED.

REVISIONS

| P | LTR | DESCRIPTION | DATE | DWN | APVD |
|---|-----|-------------|------|-----|------|
| | - | SEE SHEET 1 | - | - | - |
| | | | | | |
| | | | | | |
| | | | | | |

2POS.

2.5±1.0
6.35±0.70
12.7±0.3
PITCH

3POS.

4POS.

5POS.

6POS.

7POS.

8POS.

5POS. WITH KINK

SEE DETAIL A

1.00±0.15

0.76 REF

2.00±0.15

DETAIL A
SCALE 20:1

| B | 450 | WITHOUT KINK | 2.50 | 17.50 | 20.83 | 22.50 | 8 | 2299683-8 | 1-2299683-8 | 2-2299683-8 | 3-2299683-8 | 4-2299683-8 | 5-2299683-8 |
|--------------|-----|-------------------|-------|-------|-------|-------|------|-------------------------|---------------------|----------------------|-----------------------|------------------------|-----------------------|
| B | 450 | WITHOUT KINK | 2.50 | 15.00 | 18.33 | 20.00 | 7 | 2299683-7 | 1-2299683-7 | 2-2299683-7 | 3-2299683-7 | 4-2299683-7 | 5-2299683-7 |
| B | 450 | WITHOUT KINK | 2.50 | 12.50 | 15.83 | 17.50 | 6 | 2299683-6 | 1-2299683-6 | 2-2299683-6 | 3-2299683-6 | 4-2299683-6 | 5-2299683-6 |
| B | 450 | WITHOUT KINK | 2.50 | 10.00 | 13.33 | 15.00 | 5 | 2299683-9 | 1-2299683-9 | 2-2299683-9 | 3-2299683-9 | 4-2299683-9 | 5-2299683-9 |
| B | 450 | WITH KINK | 2.50 | 10.00 | 13.33 | 15.00 | 5 | 2299683-5 | 1-2299683-5 | 2-2299683-5 | 3-2299683-5 | 4-2299683-5 | 5-2299683-5 |
| B | 450 | WITHOUT KINK | 2.50 | 7.50 | 10.83 | 12.50 | 4 | 2299683-4 | 1-2299683-4 | 2-2299683-4 | 3-2299683-4 | 4-2299683-4 | 5-2299683-4 |
| A | 900 | WITHOUT KINK | 2.50 | 5.00 | 8.33 | 10.00 | 3 | 2299683-3 | 1-2299683-3 | 2-2299683-3 | 3-2299683-3 | 4-2299683-3 | 5-2299683-3 |
| A | 900 | WITHOUT KINK | 1.60 | 2.50 | 5.83 | 7.50 | 2 | 2299683-2 | 1-2299683-2 | 2-2299683-2 | 3-2299683-2 | 4-2299683-2 | 5-2299683-2 |
| A | 900 | WITHOUT KINK | 0.85 | 2.50 | 5.83 | 7.50 | 2 | 2299683-1 | 1-2299683-1 | 2-2299683-1 | 3-2299683-1 | 4-2299683-1 | 5-2299683-1 |
| TAPING STYLE | QTY | SOLDER TAIL SHAPE | DIM.D | DIM.C | DIM.B | DIM.A | POS. | PART NO (NATURAL COLOR) | PART NO (RED COLOR) | PART NO (BLUE COLOR) | PART NO (BLACK COLOR) | PART NO (YELLOW COLOR) | PART NO (GREEN COLOR) |

THIS DRAWING IS A CONTROLLED DOCUMENT.

DIMENSIONS: mm

TOLERANCES UNLESS OTHERWISE SPECIFIED:

0 PLC ±0.50
1 PLC ±0.30
2 PLC ±0.20
3 PLC ±
4 PLC ±
ANGLES ±3°
FINISH

DWN OTTO CHEN 15FEB2016
CHK DANIEL Z 16FEB2016
APVD DANIEL Z 16FEB2016

PRODUCT SPEC 108-2418
APPLICATION SPEC 114-13315
WEIGHT -

CUSTOMER DRAWING

TE Connectivity

NAME HEADER ASSEMBLY, VERTICAL
ECONOMY POWER, 2.5mm CENTERLINE
TAPING VERSION

SIZE A200779
CAGE CODE C-2299683
DRAWING NO
RESTRICTED TO -

SCALE N/A
SHEET 2 OF 2
REV C1

1471-9 (3/13)

X-ON Electronics

Largest Supplier of Electrical and Electronic Components

Click to view similar products for [Headers & Wire Housings](#) *category:*

Click to view products by [TE Connectivity](#) *manufacturer:*

Other Similar products are found below :

[892-18-020-10-001101](#) [58102-G61-06LF](#) [582553-1](#) [0009485154](#) [009176003701906](#) [0050291907](#) [LY20-4P-DT1-P1E-BR](#) [02.125.8002.8](#)
[609-3404](#) [61062-3](#) [61082-181009](#) [622-3653LF](#) [63453-116](#) [636-1030](#) [636-1427](#) [636-3427](#) [636-4007](#) [641938-9](#) [641991-4](#) [644827-2](#) [65817-](#)
[010LF](#) [65817-015LF](#) [65863-015LF](#) [66207-023LF](#) [67095-007LF](#) [67601157](#) [68645-018](#) [68648-049](#) [70.362.1628.0](#) [70-4210](#) [70-4226B](#) [70-](#)
[4853B](#) [707-5020](#) [707-5028](#) [71.350.2428.0](#) [71918-208LF](#) [71961-016LF](#) [733-134](#) [733-162](#) [754199-000](#) [760-3052](#) [787-8014-00](#) [79531-3000](#)
[FCN-360C032-B](#) [FCN-367T-T012/H](#) [FCN-723D010/2](#) [80.063.4001.1](#) [800-90-001-10-001000](#) [800-90-010-10-002000](#) [801-43-002-10-013000](#)