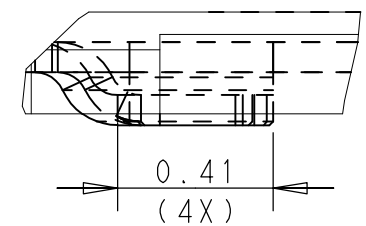
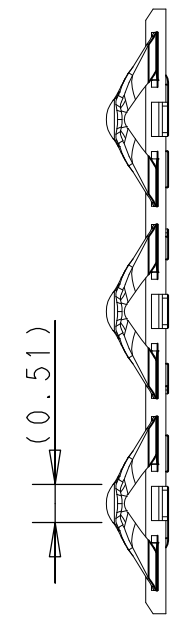
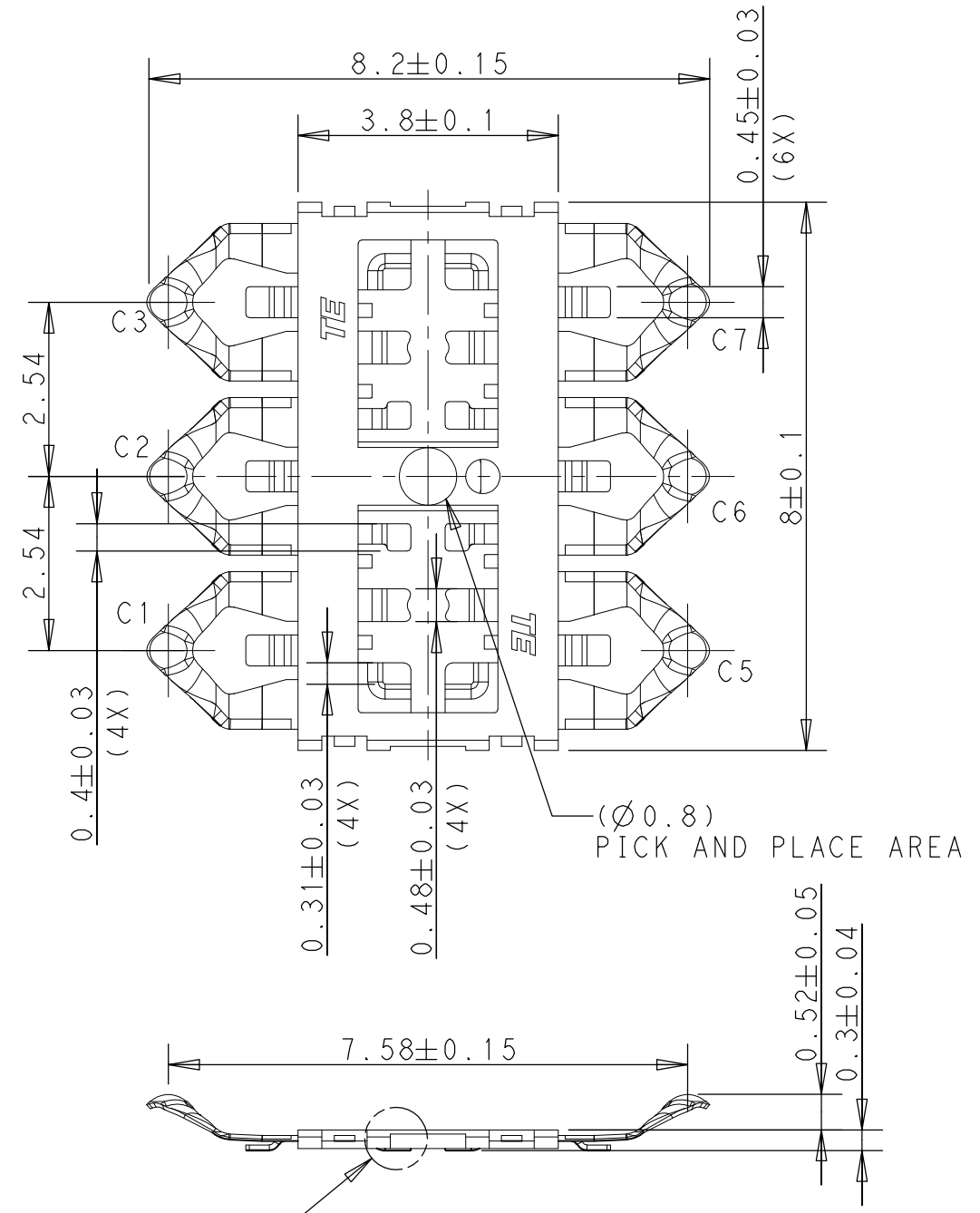


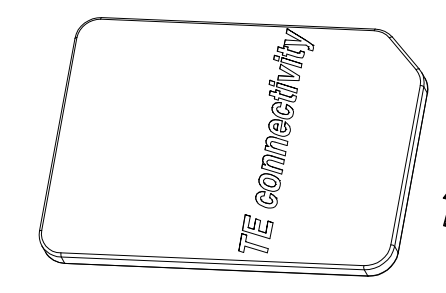
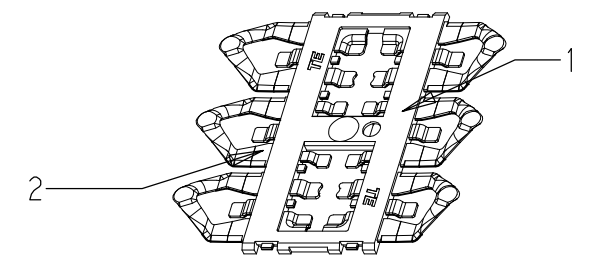
THIS DRAWING IS UNPUBLISHED. RELEASED FOR PUBLICATION 20
 © COPYRIGHT 20 BY - ALL RIGHTS RESERVED.

REVISIONS					
P	LTR	DESCRIPTION	DATE	DWN	APVD
	1	INITIAL	21SEP2016	R.Z	C.W



NOTES:

- 1. HOUSING MATERIAL: THERMO PLASTIC RESIN.
- 2. CONTACT MATERIAL: COPPER ALLOY.
FINISH :
50u" MIN. NICKEL UNDERPLATING ALL OVER,
GOLD PLATING 3u" MIN. ON CONTACT AREA
12u" MIN. Pd/Ni ON CONTACT AREA
GOLD PLATING 1u" MIN. ON SOLDER AREA
- 3. COPLANARITY: 0.08MAX. (BEFORE IR)
- 4. DATE CODE:
YWWDSL (YEAR, WEEK, DAY, SHIFT, LINE)



SEE DETAIL A

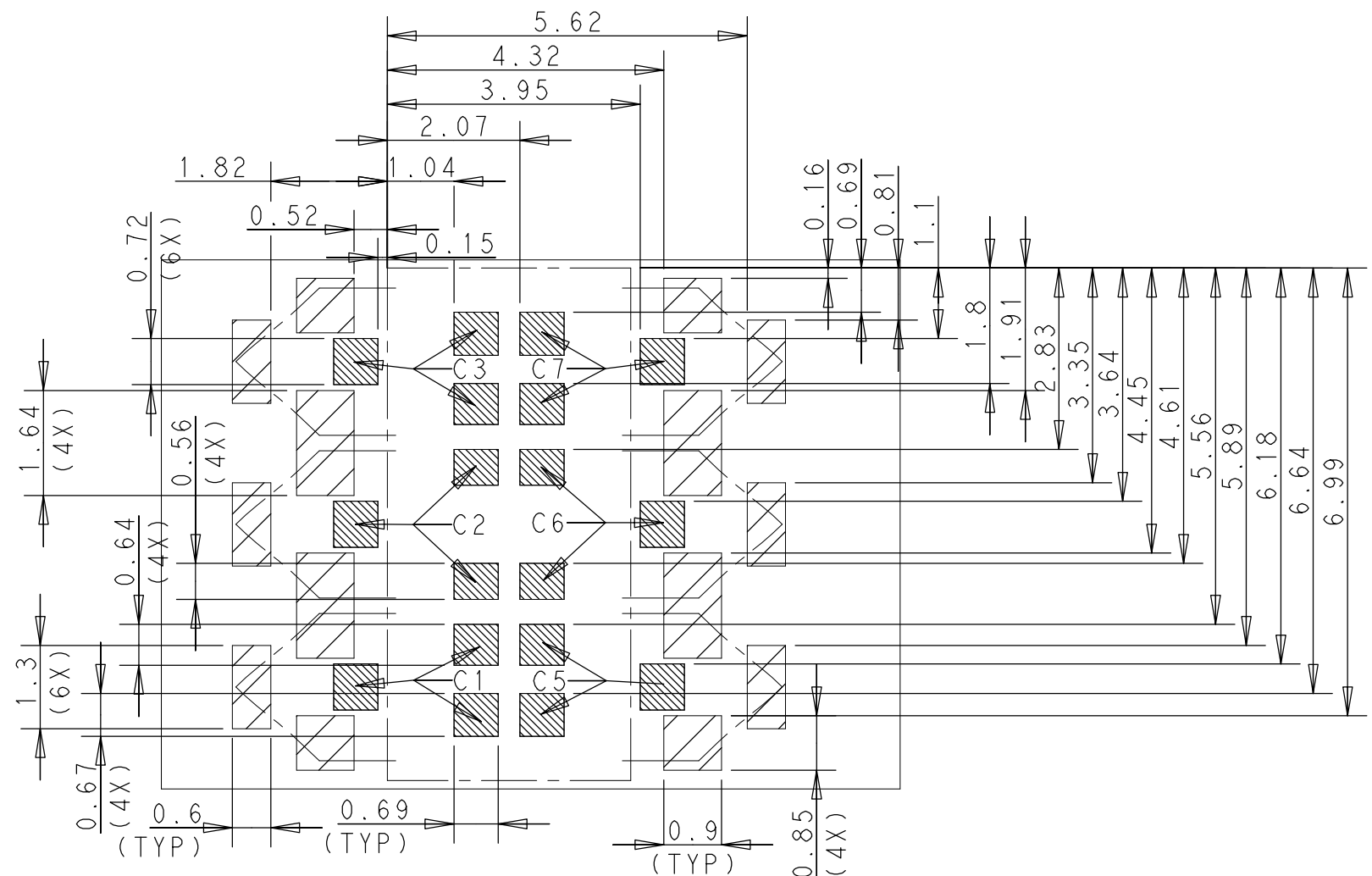
DETAIL A
SCALE 50:1

2309923-1	2	CONTACT	2
	1	HOUSING	1
P/N	ITEM	COMPONENT	MATERIAL/FINISH

DESIGN APPROVED THIS PRINT IS
PRELIMINARY
 TO FIRST PIECE APPROVAL
 CONTACT PRODUCT ENGINEERING
 BEFORE USING THIS PRINT

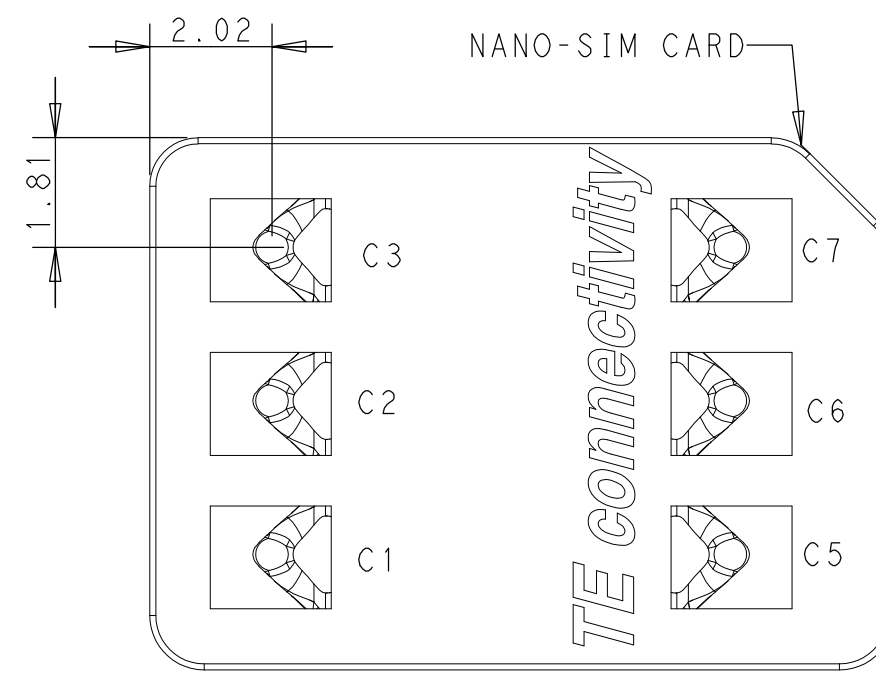
THIS DRAWING IS A CONTROLLED DOCUMENT.		DWN	21-Sep-16					
DIMENSIONS: mm		CHK	21-Sep-16					
TOLERANCES UNLESS OTHERWISE SPECIFIED:		APVD	21-Sep-16					
0 PLC ±- 1 PLC ±0.1 2 PLC ±0.05 3 PLC ±0.02 4 PLC ±- ANGLES ±- MATERIAL FINISH -		PRODUCT SPEC	108-115090					
		APPLICATION SPEC	-		NAME	ANTI-BUCKLING BLOCK SIM CONNECTOR SIDE ENTRY TYPE		
		WEIGHT	0.026g		SIZE	CAGE CODE	DRAWING NO	RESTRICTED TO
		CUSTOMER DRAWING			A3	00779	C-2309923	-
		SCALE	10:1		SHEET	1 OF 2		REV 1

P	LTR	DESCRIPTION	DATE	DWN	APVD
		SEE SHEET 1			



REFERENCE P.C. BOARD LAYOUT (P.C.B. TOLERANCE: ±0.05)

-  SOLDER AREA
-  COPPER FOIL REMOVE & SOLDER MASK KEEP OUT (DEPTH: 0.05~0.10MM)
-  CONNECTOR BOUNDARY



REFERENCE INSERTION SITUATION NANO-SIM CARD

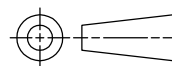
DESIGN APPROVED THIS PRINT IS

PRELIMINARY

TO FIRST PIECE APPROVAL CONTACT PRODUCT ENGINEERING BEFORE USING THIS PRINT

THIS DRAWING IS A CONTROLLED DOCUMENT.

DIMENSIONS: mm



TOLERANCES UNLESS OTHERWISE SPECIFIED:

- 0 PLC ±-
- 1 PLC ±0.1
- 2 PLC ±0.05
- 3 PLC ±0.02
- 4 PLC ±-
- ANGLES ±-
- FINISH -

MATERIAL -

DWN E.F. 21-Sep-16

CHK S.L. 21-Sep-16

APVD C.W. 21-Sep-16

PRODUCT SPEC 108-115090

APPLICATION SPEC -

WEIGHT 0.026g

CUSTOMER DRAWING

NAME ANTI-BUCKLING BLOCK SIM CONNECTOR SIDE ENTRY TYPE

SIZE A3 CAGE CODE 00779 DRAWING NO C-2309923 RESTRICTED TO -

SCALE 10:1 SHEET 2 OF 2 REV 1



X-ON Electronics

Largest Supplier of Electrical and Electronic Components

Click to view similar products for [Memory Card Connectors](#) category:

Click to view products by [TE Connectivity](#) manufacturer:

Other Similar products are found below :

[M21-033321-005](#) [6407-249V-25273P](#) [6407-249V-25343P](#) [6426-201-21343](#) [69.920.0553.0](#) [FCN-568P068-G/07-4V](#) [809180410000000](#)
[N7E50-7516PG-20-WF](#) [HMCAP001](#) [2041353-2](#) [33CFAE-DN](#) [502431-1011](#) [EN2997S61212BN](#) [EN2997SE61212BN](#) [NX1-32T-KT3K\(05\)](#)
[95622-003LF](#) [N7E50-U516RB-50-SIN0005](#) [95079-00CALF](#) [33DVIR-29S12R](#) [125A-78C00](#) [MI20A-50PD-SF-EJL\(71\)](#) [KP10S-SF-PEJ\(812\)](#)
[504536-0691](#) [504580-0691](#) [CCM03-3109 B LFT](#) [MI21-50PD-SF\(91\)](#) [2309923-1](#) [61126-050CAHLF](#) [IC1GA-68PD-1.27DS-EJ\(72\)](#)
[GTFP08432B1HR](#) [G85DT17001P1EU](#) [G85B21611142HHR](#) [GSD090144HR](#) [G85D1140022P1HR](#) [GMCB05801124EU](#) [G85C11101152HHR](#)
[G85B231021B1HR](#) [G85D1160022HHR](#) [112K-TAA0-RA1](#) [115S-ACA2](#) [115S-ACA3](#) [115S-BS00](#) [115S-BT00](#) [115V-AD00](#) [MCSP-Q1-08-](#)
[A-SG-T/R](#) [503960-0695](#) [101B-TAA0-R](#) [101D-TAAA-R01](#) [101D-TAAB-R01](#) [104D-TCA0-R06](#)