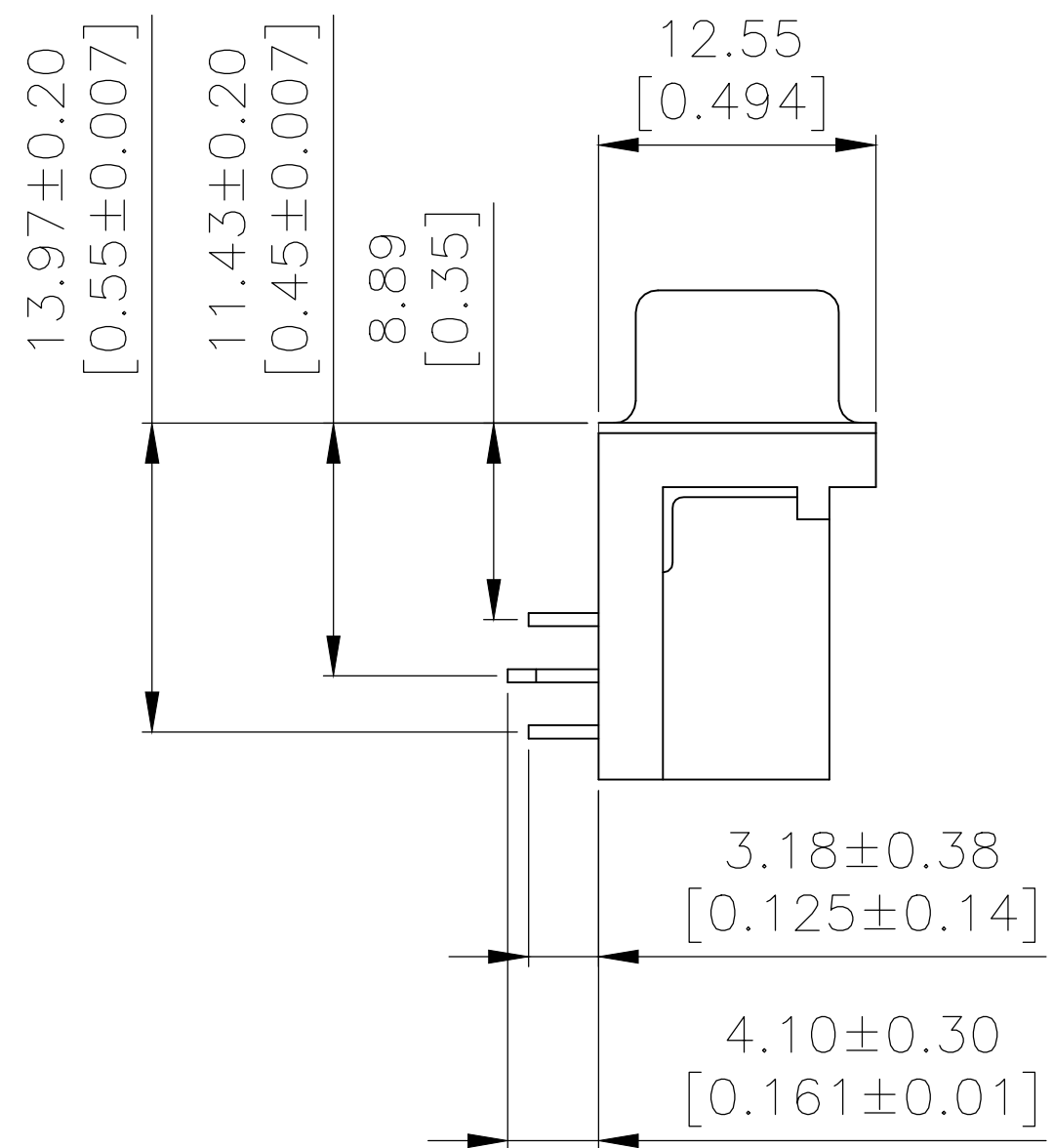
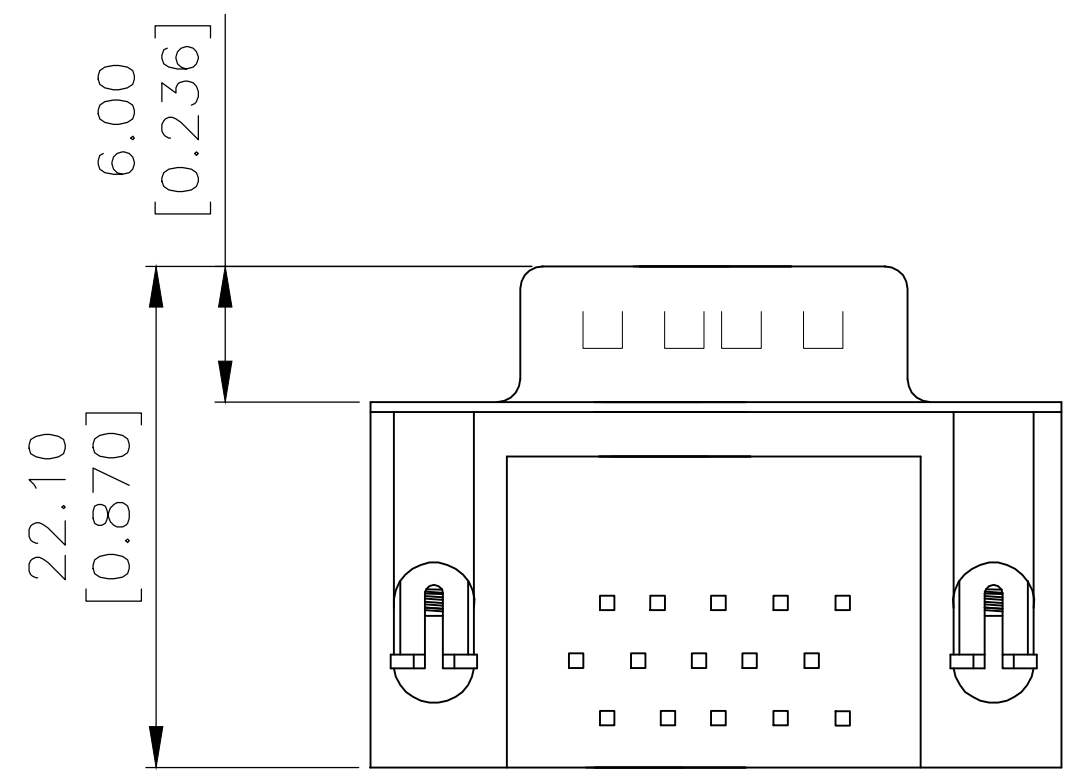
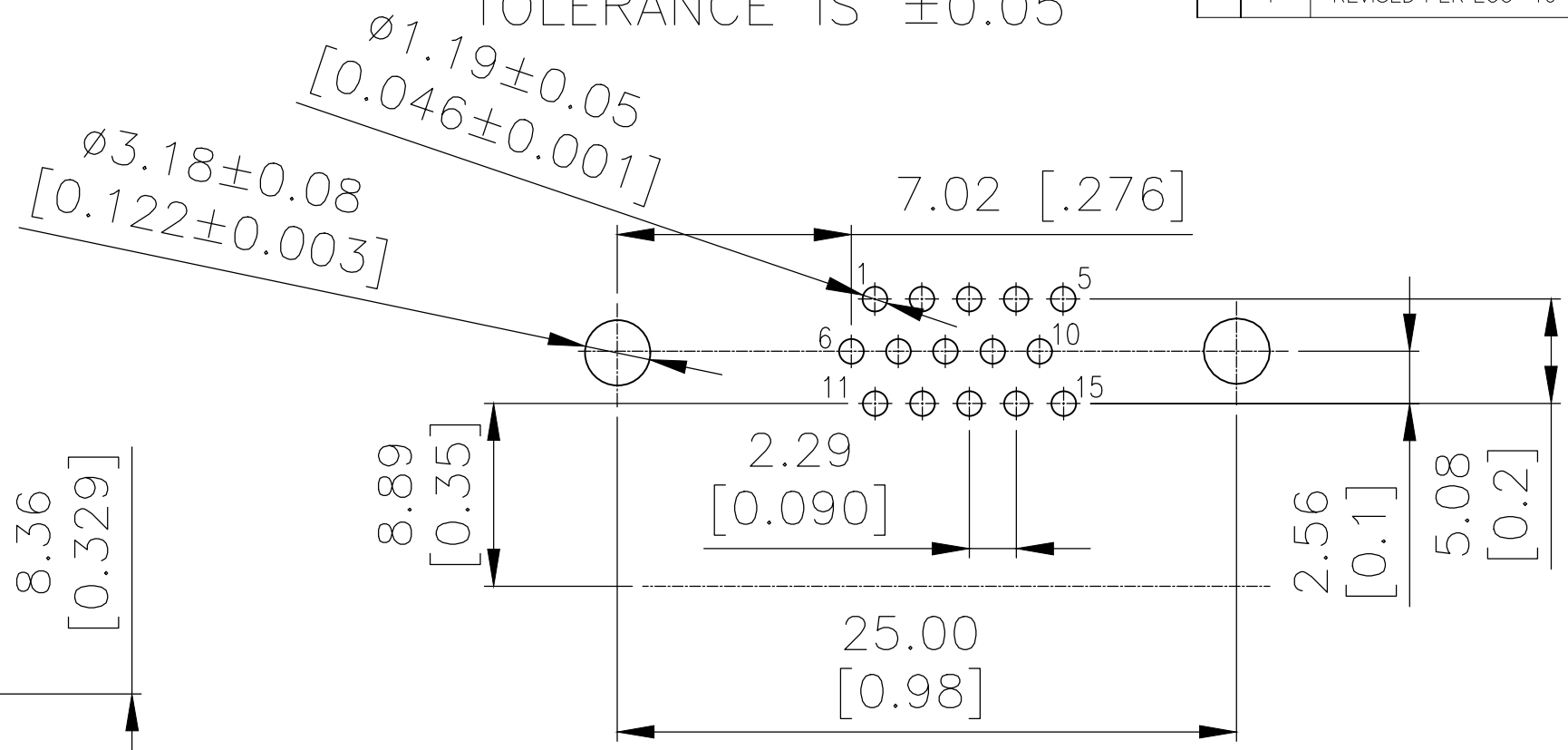
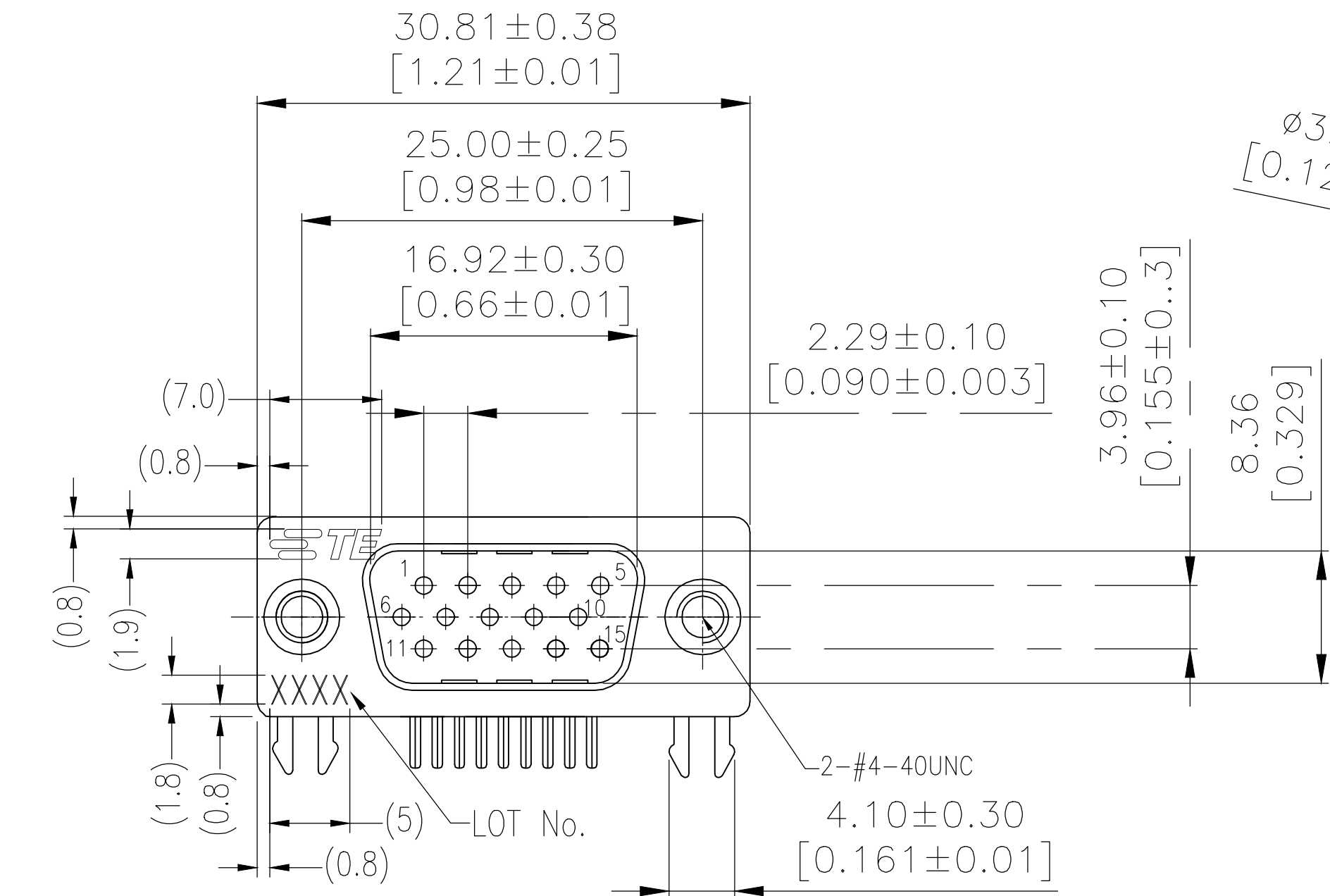


THIS DRAWING IS UNPUBLISHED. RELEASED FOR PUBLICATION
 © COPYRIGHT - By - ALL RIGHTS RESERVED.

RECOMMENDED PCB LAYOUT
 TOLERANCE IS ±0.05

REVISIONS				
P	LTR	DESCRIPTION	DATE	APVD
F		REVISED PER ECO-19-007626	12SEP2019	AP DG



NOTES:
 Housing:PBT+30%GF(UL94V-0) BLACK
 Contact:Brass
 " GOLD PLATING ON CONTACT AREA
 100u" MATTE TIN PLATING ON SOLDER TAIL
 50u" NICKEL UNDERPLATED OVERALL
 HOLDDOWN:Brass,100u" TIN OVER 50u" NICKEL
 Shell: Cold Roller Steel, Ni Plated
 Revit: Brass, Nickel Plating
 LOT NUMBER "XXXX"
 ↳ Stands For Calendar Year
 ↳ Stands For Week Number

THREADED	30μ" Au	2311774-1
-	Contact Area	P/N
	Plating	

THIS DRAWING IS A CONTROLLED DOCUMENT.		DWN AJITH PAI 09MAR2017	STE TE Connectivity	
DIMENSIONS: mm		CHK DANIEL GORENC 09MAR2017		
TOLERANCES UNLESS OTHERWISE SPECIFIED:		APVD DANIEL GORENC 09MAR2017	NAME AMPLIMITE PLUG, HD22, RIGHT ANGLE, 15P	
0 PLC ± -		PRODUCT SPEC 108-130023	SIZE A2	
1 PLC ± -		APPLICATION SPEC	CAGE CODE 00779	
2 PLC ± 0.25			DRAWING NO C=2311774	
3 PLC ± -			RESTRICTED TO	
4 PLC ± -			-	
ANGLES ± -			-	
FINISH		WEIGHT	SCALE 1:1	
-			SHEET 1 OF 1	
		CUSTOMER DRAWING	REV F	

X-ON Electronics

Largest Supplier of Electrical and Electronic Components

Click to view similar products for [D-Sub High Density Connectors](#) category:

Click to view products by [TE Connectivity](#) manufacturer:

Other Similar products are found below :

[97-3250-11](#) [164A05929A](#) [164A17209X](#) [164A17479X](#) [164A18209X](#) [L717HDB44POL2R210](#) [163A17049X](#) [164A17309X](#) [164A18219X](#)
[242A18280X](#) [L77HDA26SVF](#) [L77HDEH15S](#) [DAMA-15S-WS](#) [4HDD44SCY99R40X](#) [106698-1](#) [DAMA15SA183F0](#) [L777HRC62P](#) [206504-](#)
[2](#) [2057140-1](#) [C115370-6002](#) [DFMA104SNMBFR172FR022](#) [280-029S2S15MEPB](#) [280-023S1S9MTPA](#) [241A26740X](#)
[L177HDEH15SOL2RM5](#) [280-047S4-27W2MEN](#) [15-007591](#) [340102002B](#) [DABMA26PSNMB](#) [280-018P3H44MEGN](#) [MDBRE15PEJN0](#)
[K66X-A26P-N30](#) [CHO 48 L](#) [CZO 25 L](#) [173113-0103](#) [340100202B](#) [DAMA26SNMB-FO](#) [L777HRBH44P](#) [DD104S3P00C-50](#)
[DD78M4B30T2S-50](#) [DD104M3P00C-50](#) [K86X-CD-62S-RBR](#) [CT15-26P](#) [CT15-26P7](#) [CT15-26S](#) [CT50-78P7](#) [MHD45PK15-K](#)
[MHD45PK37-K](#) [MHDPPK15-Y-K](#) [MHDPPK25-B-K](#) [MHDPPK25-G-K](#) [MHDPPK25-R-K](#)