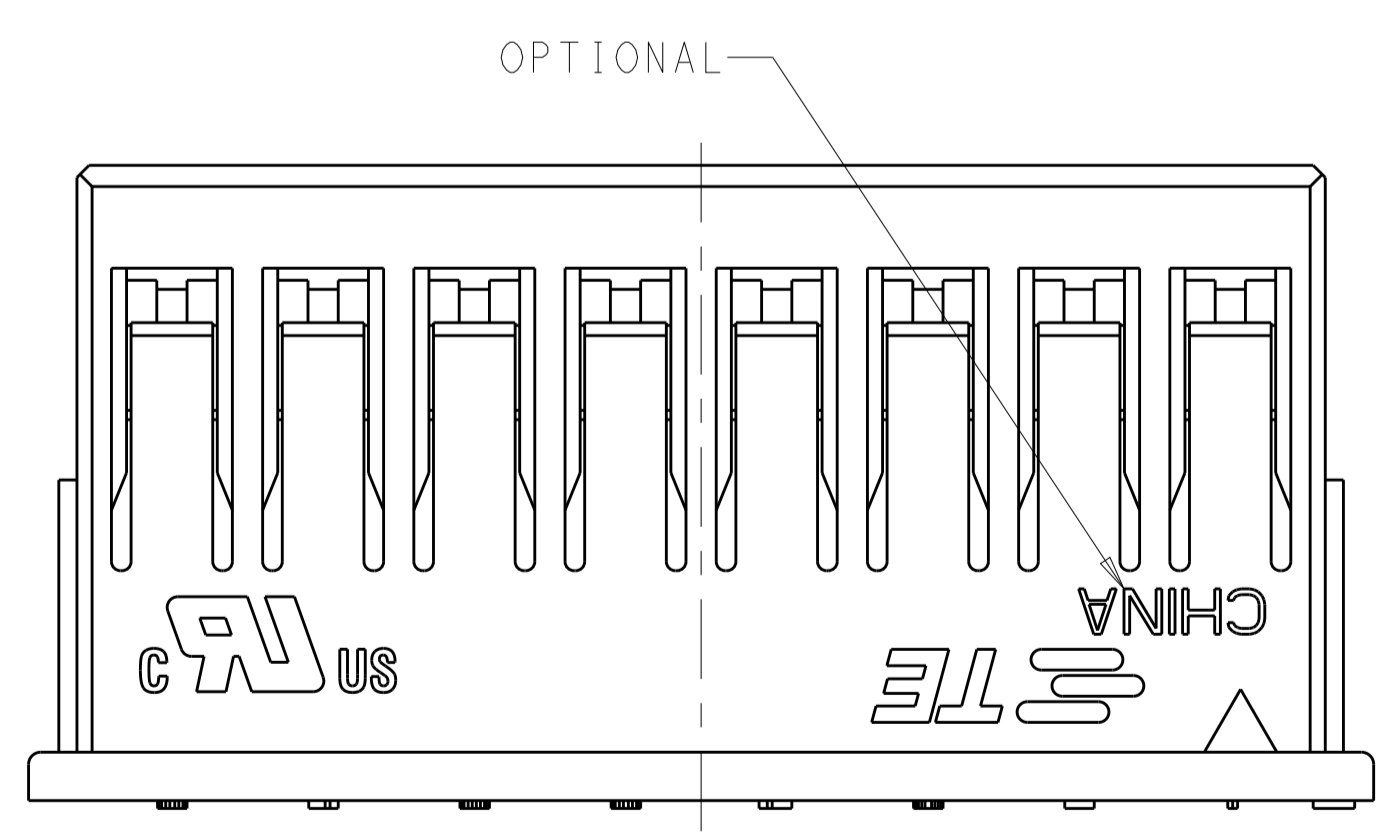
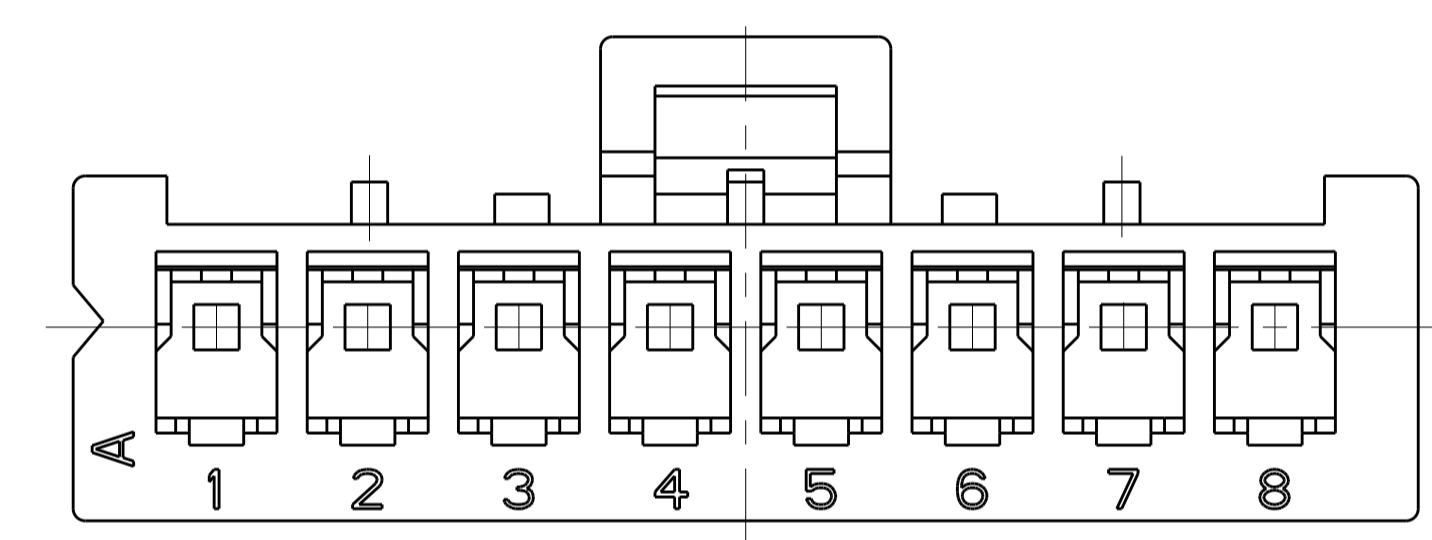
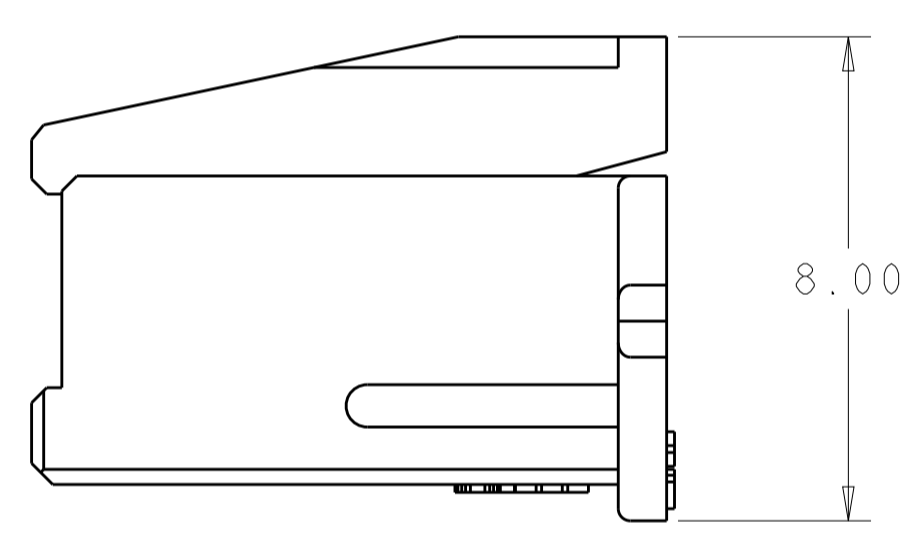
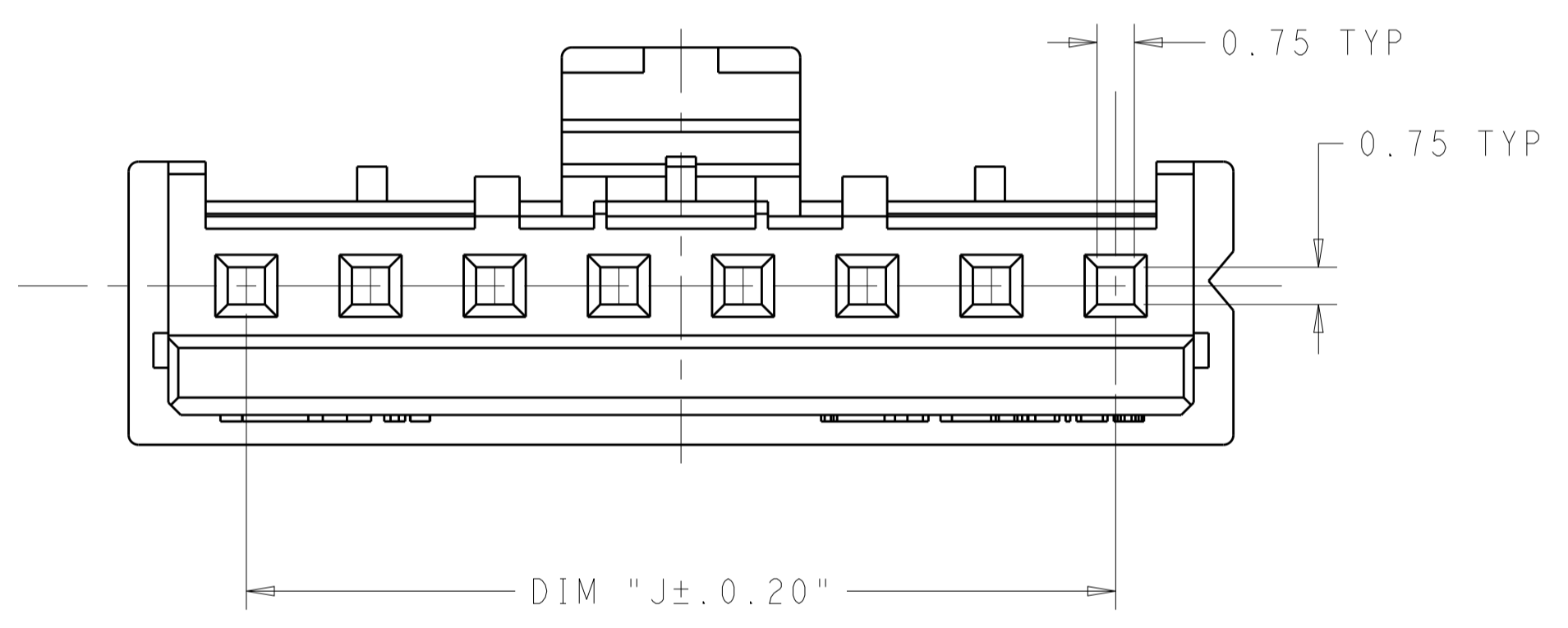
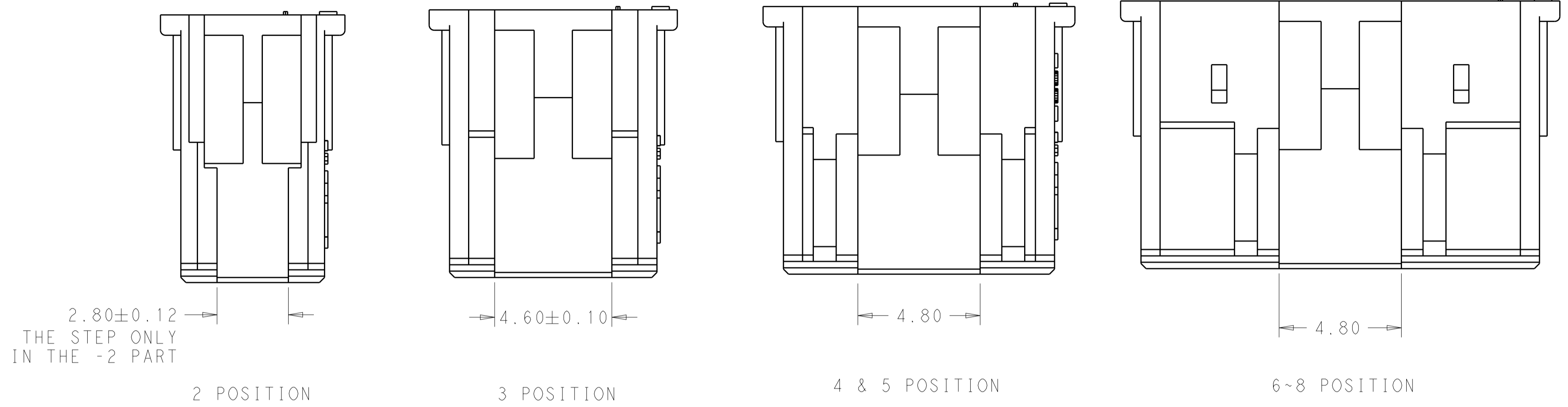
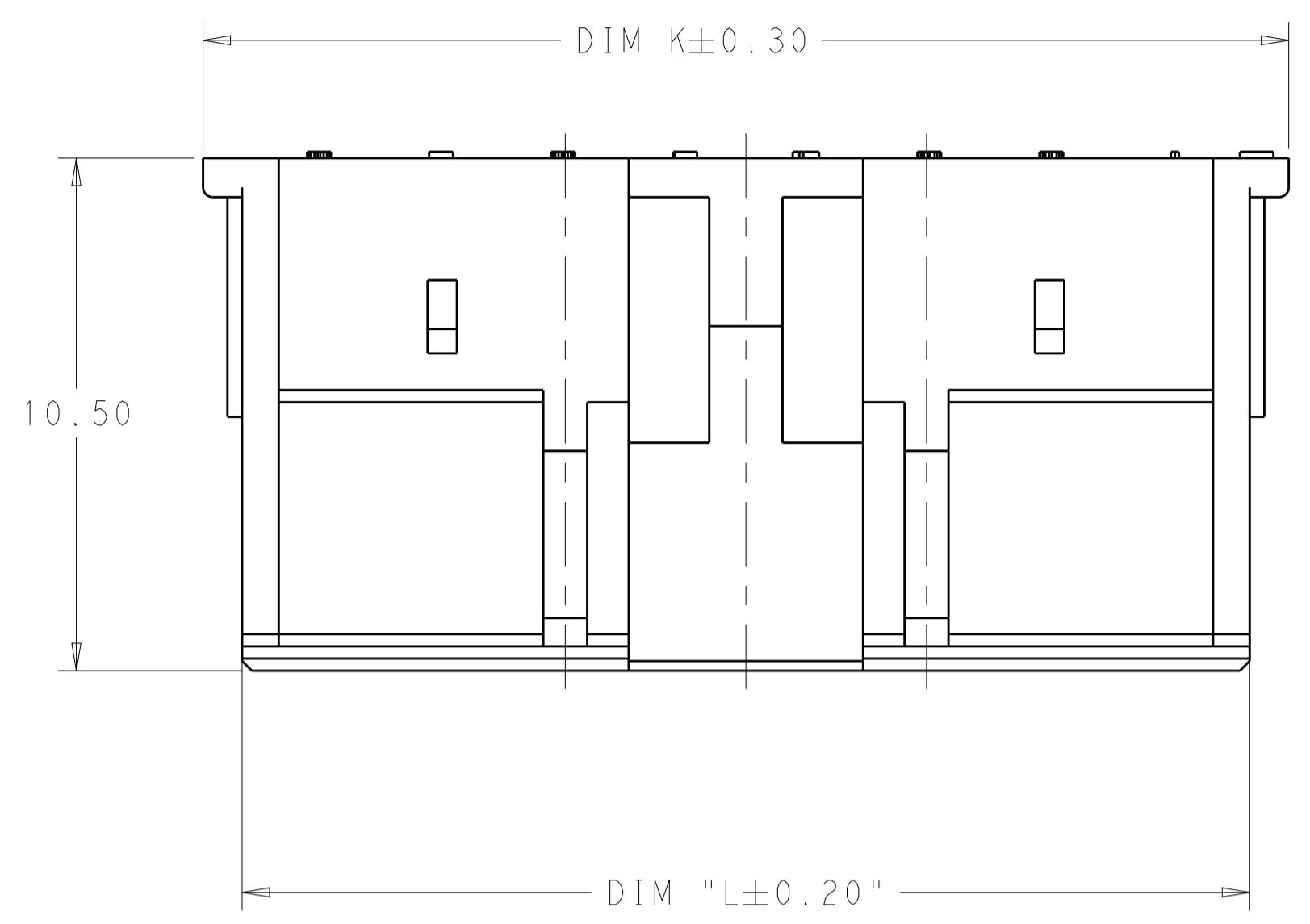


REVISIONS				
P.	LTN	DESCRIPTION	DATE	DWN APVD
A		FIRST RELEASED	11JUN2019	WH DZ



- NOTES:
- MATERIAL: NYLON UL94V-0
COLOR: NATURAL
 - ACCEPTS TE RECEPTACLE
P/N'S 2110989-() & 2232905-()
 - THESE HOUSINGS CAN ACCEPT
OPTIONAL TPA (RETAINER)
P/N 1969443-() OR 1969825-().
 - MATES WITH TE HEADER ASSEMBLIES
1744418-() & 1744439-().
 - COMPLY WITH GLOW WIRE REQUIREMENTS
FOR PARTS OF NON-METALLIC
MATERIAL SUPPORTING A CURRENT-
CARRYING CONNECTION DETAILED IN
IEC 60335-1, SECTION 30(GWT).

20.64	22.3	17.5	8	2312294-8
18.14	19.8	15.0	7	2312294-7
15.64	17.3	12.5	6	2312294-6
13.14	14.8	10.0	5	2312294-5
10.64	12.3	7.5	4	2312294-4
8.14	9.8	5.0	3	2312294-3
5.64	7.3	2.5	2	2312294-2
DIM L	DIM K	DIM J	NO. OF POSITIONS	PART NUMBER

THIS DRAWING IS A CONTROLLED DOCUMENT.

DWN: WARREN HUO 14JUN2018
 CHK: DANIEL ZHANG 15JUN2018
 APVD: DANIEL ZHANG 15JUN2018

TE Connectivity

NAME: ECONOMY POWER 2.5 PLUG HOUSING, HR GLOW WIRE

PRODUCT SPEC: 108-106357
 APPLICATION SPEC: 114-13315

SIZE: 114-13315
 CAGE CODE: 114-13315
 DRAWING NO: A100779
 CUSTOMER: RESTRICTED CUSTOMER

RESTRICTED TO: A

SCALE: N/A SHEET 1 OF 1 REV A

X-ON Electronics

Largest Supplier of Electrical and Electronic Components

Click to view similar products for [Headers & Wire Housings](#) category:

Click to view products by [TE Connectivity](#) manufacturer:

Other Similar products are found below :

[892-18-020-10-001101](#) [58102-G61-06LF](#) [582553-1](#) [0009485154](#) [009176003701906](#) [0050291907](#) [LY20-4P-DT1-P1E-BR](#) [02.125.8002.8](#)
[609-3404](#) [61062-3](#) [61082-181009](#) [622-3653LF](#) [63453-116](#) [636-1030](#) [636-1427](#) [636-3427](#) [636-4007](#) [641938-9](#) [641991-4](#) [644827-2](#) [65817-010LF](#) [65817-015LF](#) [65863-015LF](#) [66207-023LF](#) [67095-007LF](#) [67601157](#) [68645-018](#) [68648-049](#) [70.362.1628.0](#) [70-4210](#) [70-4226B](#) [70-4853B](#) [707-5020](#) [707-5028](#) [71.350.2428.0](#) [71918-208LF](#) [71961-016LF](#) [733-134](#) [733-162](#) [754199-000](#) [760-3052](#) [787-8014-00](#) [79531-3000](#)
[FCN-360C032-B](#) [FCN-367T-T012/H](#) [FCN-723D010/2](#) [80.063.4001.1](#) [800-90-001-10-001000](#) [800-90-010-10-002000](#) [801-43-002-10-013000](#)