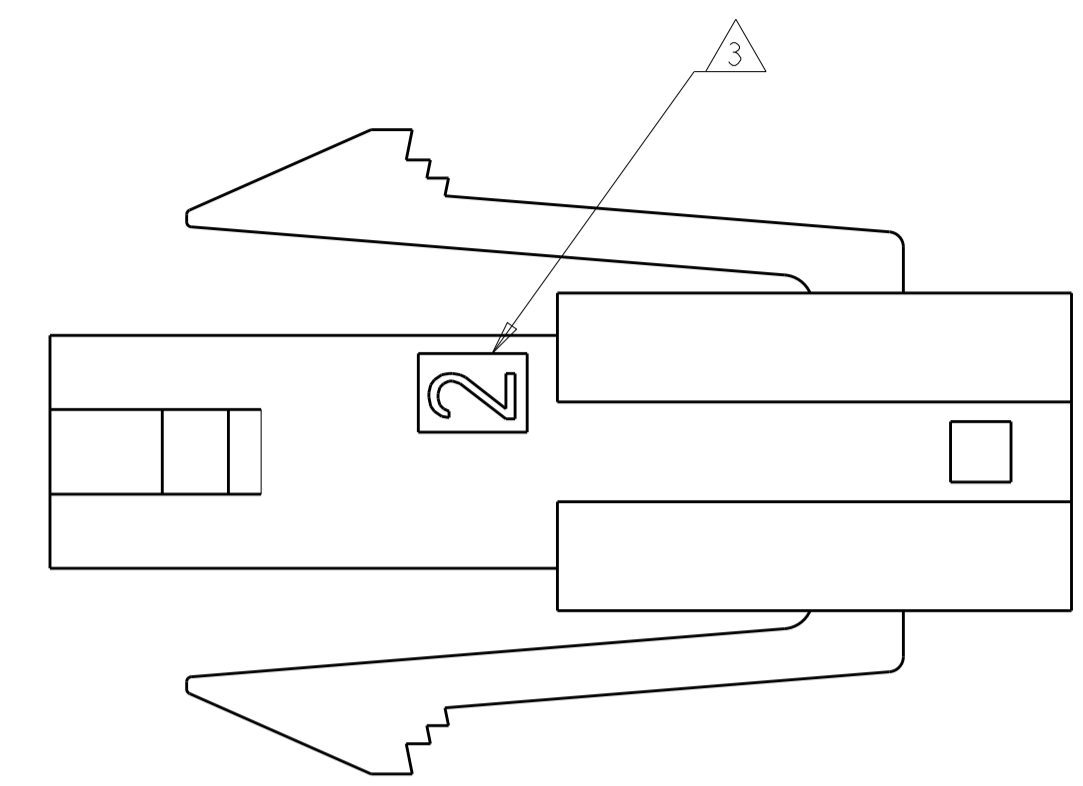
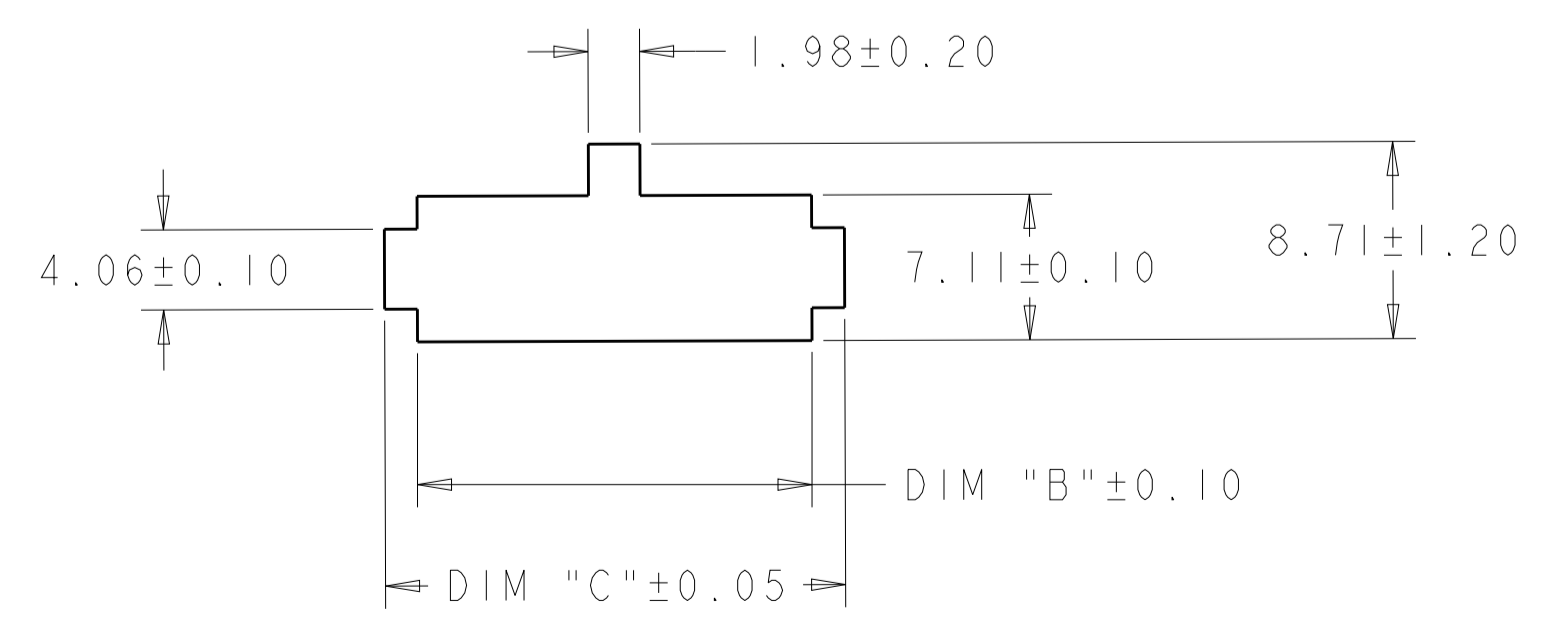
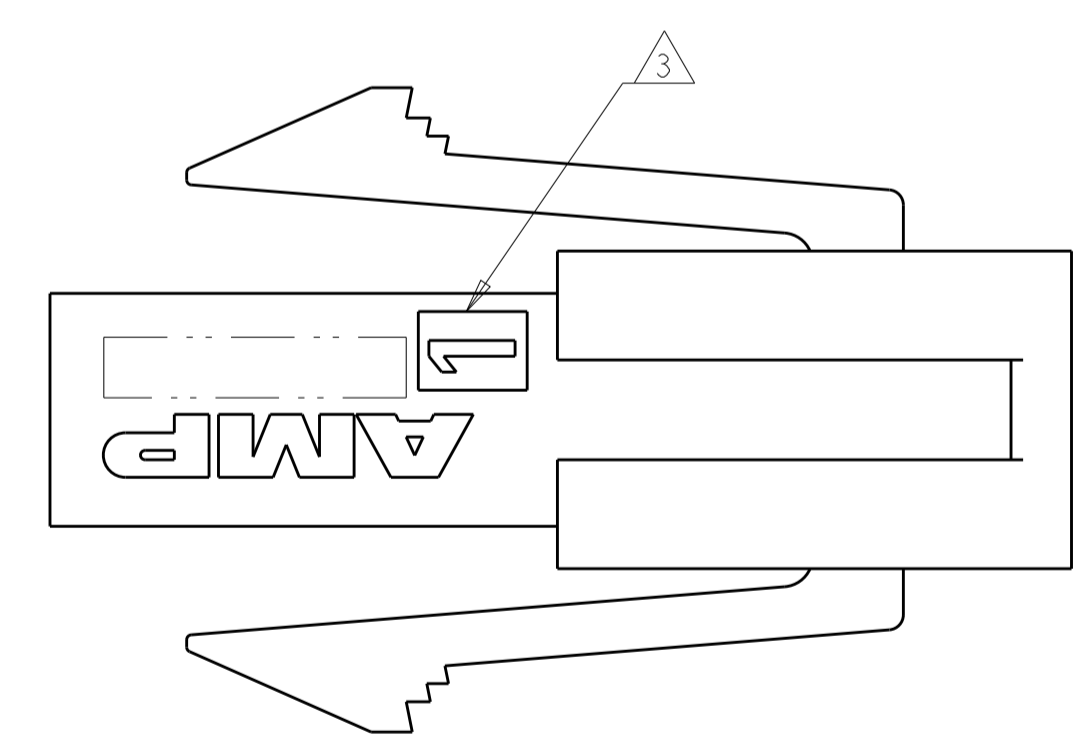
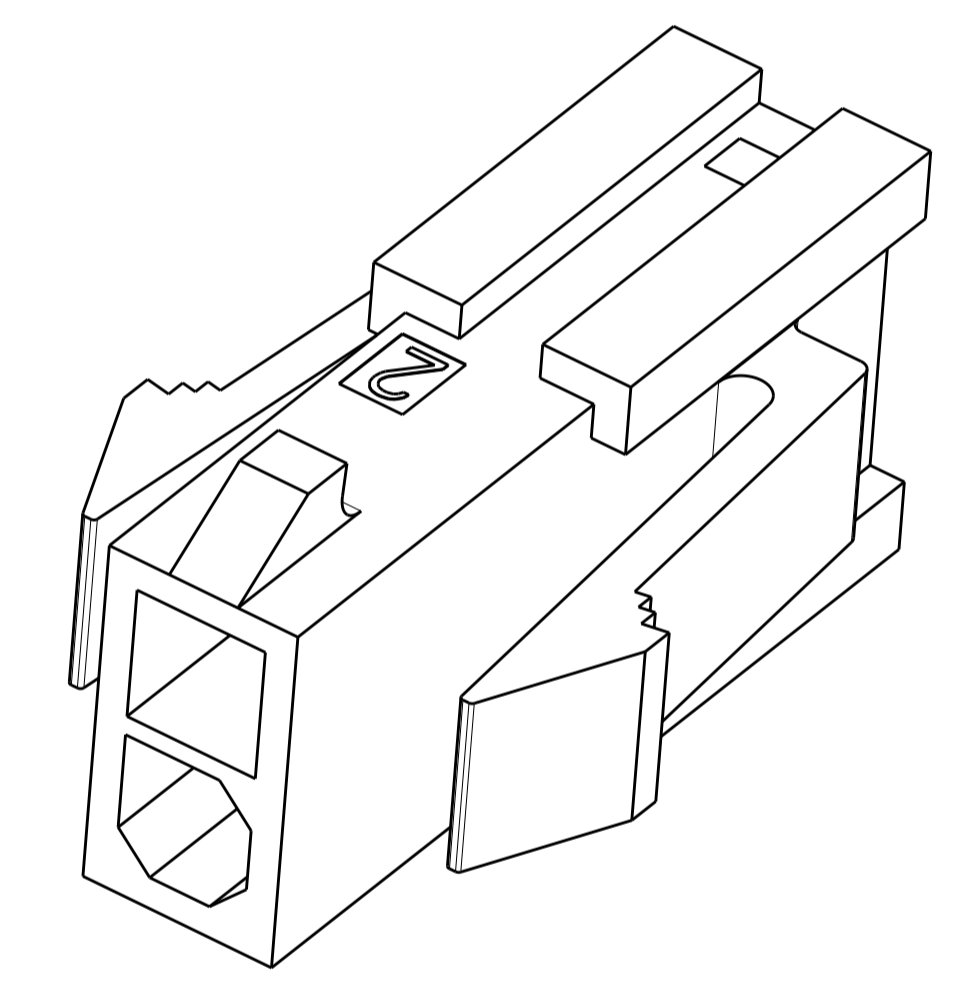
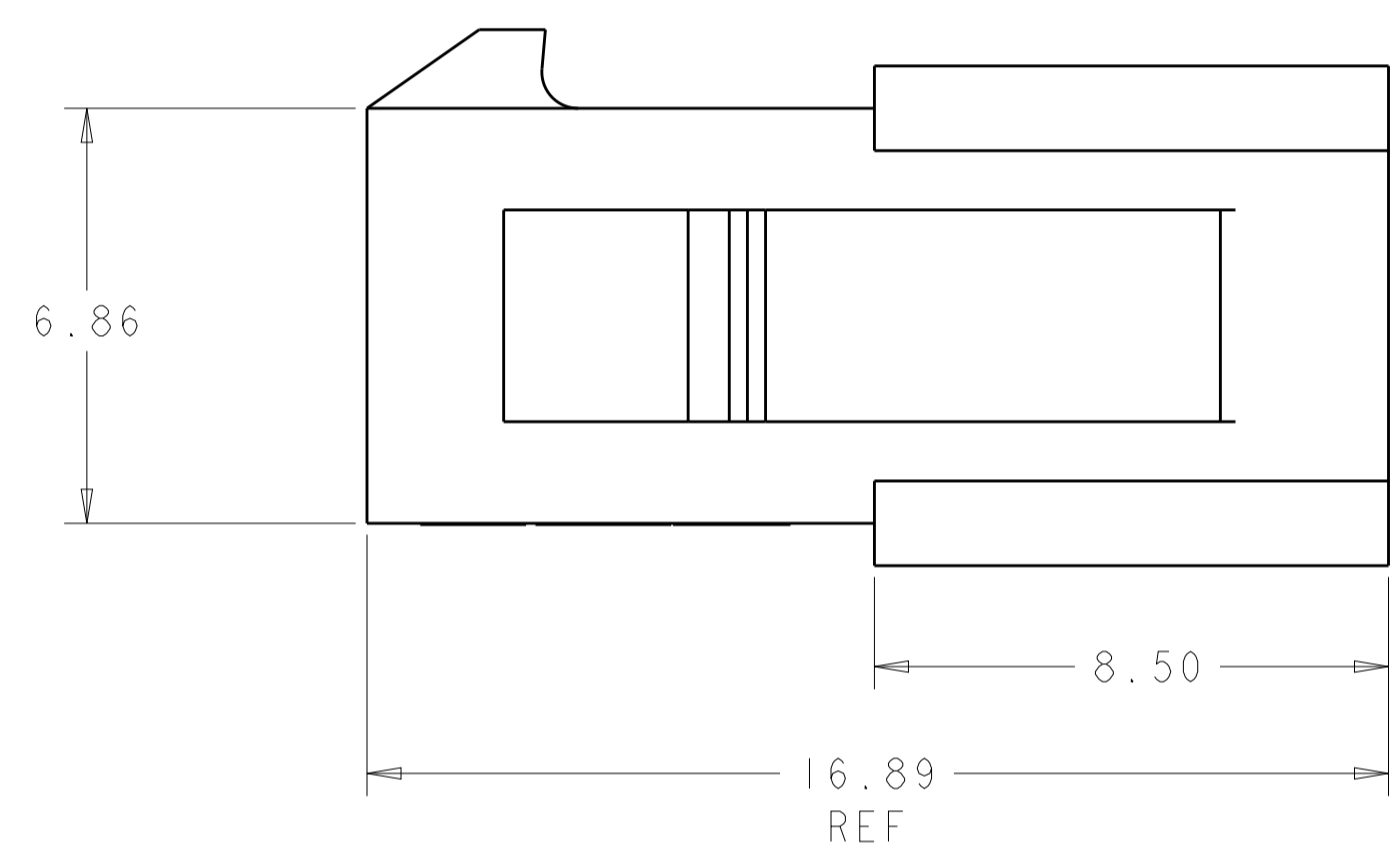
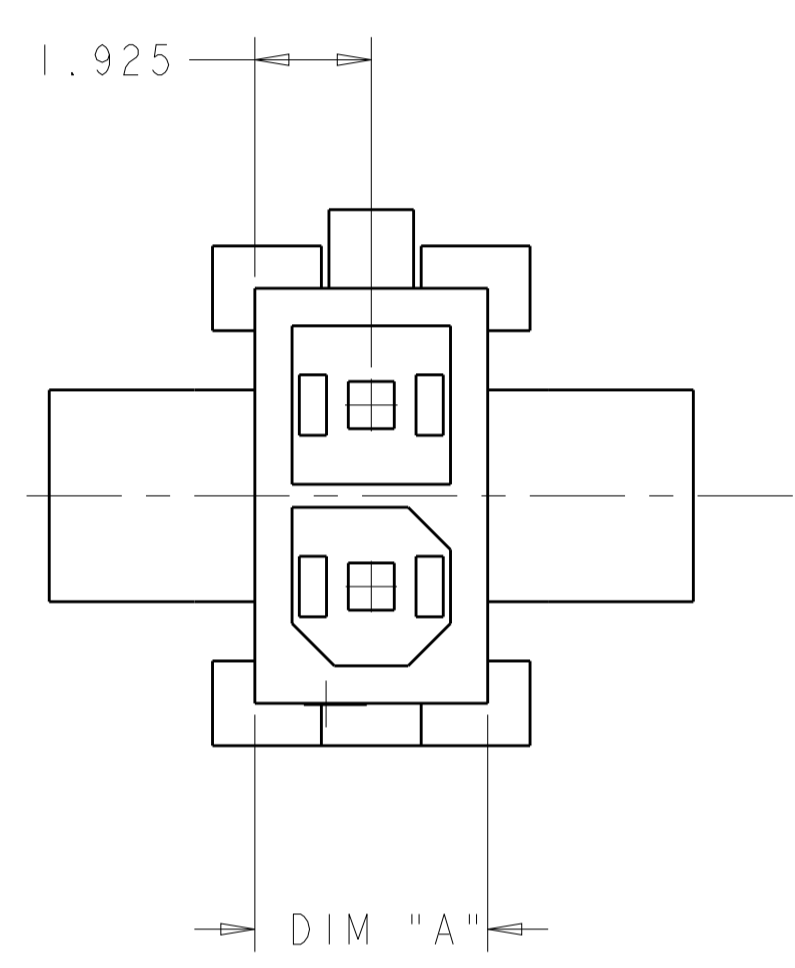


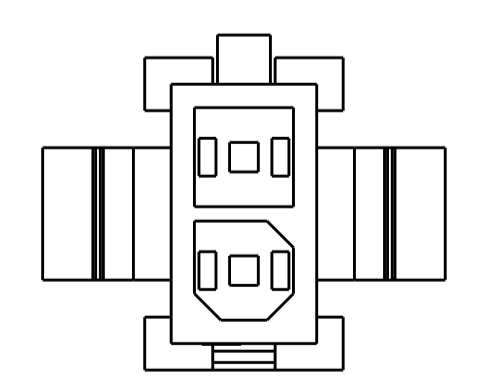
REVISIONS					
P.	LTN	DESCRIPTION	DATE	DWN	APVD
A1		REVISED PER ECR-18-007792	21MAY2018	JB	DZ
B		REVISED PER ECR-18-014008	04SEP2018	JB	DZ



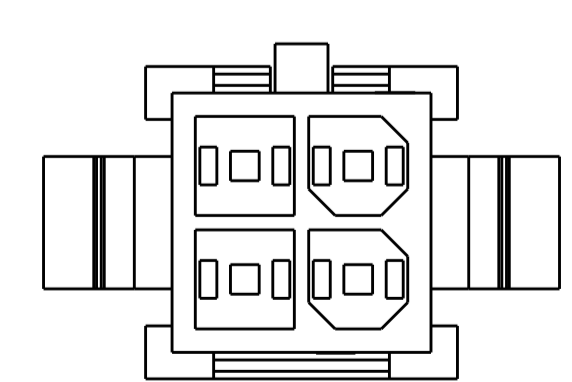
- △ RECOMMENDED PANEL THICKNESS 1.57-2.3
- 2 PANEL MUST BE PUNCHED SO THAT HOUSING ENTERS THE PANEL IN THE SAME DIRECTION AS THE PUNCH.
- △ CIRCUIT IDENTIFIER LOCATED APPROXIMATELY AS SHOWN,
- △ MATERIAL PA66 UL94-V0, GW, COLOR-NATURAL



PANEL CUT OUT △



2 POSITION



4 POSITION

UL94-V0	10.88	7.20	6.85	4	2315758-4
GWT △	7.88	4.20	3.85	2	2315758-2
MATERIAL	DIM "C"	DIM "B"	DIM "A"	NO. OF POSITIONS	PART NUMBER

THIS DRAWING IS A CONTROLLED DOCUMENT.		DWN: BASAVARAJA D A 02MAR2018	
DIMENSIONS: mm		CHK: JYOTIRMAYA 02MAR2018	
TOLERANCES UNLESS OTHERWISE SPECIFIED:		APVD: DANIEL ZHANG 02MAR2018	NAME: PLUG HOUSING, DUAL ROW, PANEL MOUNT, MICRO MATE-N-LOK PRODUCT SPEC: 108-1836 APPLICATION SPEC: 114-13000
0 PLC ± 1 PLC ±0.13 2 PLC ± 3 PLC ± 4 PLC ± ANGLES ± FINISH -		SIZE: A1 CAGE CODE: 00779 DRAWING NO: C=2315758 WEIGHT: - CUSTOMER DRAWING	
MATERIAL: △ 4		RESTRICTED TO: B	SCALE: 8:1 SHEET: 1 OF 1 REV: B

X-ON Electronics

Largest Supplier of Electrical and Electronic Components

Click to view similar products for [Headers & Wire Housings](#) category:

Click to view products by [TE Connectivity](#) manufacturer:

Other Similar products are found below :

[892-18-020-10-001101](#) [58102-G61-06LF](#) [582553-1](#) [0009485154](#) [009176003701906](#) [0050291907](#) [LY20-4P-DT1-P1E-BR](#) [02.125.8002.8](#)
[609-3404](#) [61062-3](#) [61082-181009](#) [622-3653LF](#) [63453-116](#) [636-1030](#) [636-1427](#) [636-3427](#) [636-4007](#) [641938-9](#) [641991-4](#) [644827-2](#) [65817-010LF](#) [65817-015LF](#) [65863-015LF](#) [66207-023LF](#) [67095-007LF](#) [67601157](#) [68645-018](#) [68648-049](#) [70.362.1628.0](#) [70-4210](#) [70-4226B](#) [70-4853B](#) [707-5020](#) [707-5028](#) [71.350.2428.0](#) [71918-208LF](#) [71961-016LF](#) [733-134](#) [733-162](#) [754199-000](#) [760-3052](#) [787-8014-00](#) [79531-3000](#)
[FCN-360C032-B](#) [FCN-367T-T012/H](#) [FCN-723D010/2](#) [80.063.4001.1](#) [800-90-001-10-001000](#) [800-90-010-10-002000](#) [801-43-002-10-013000](#)